

PALFINGER

LIFETIME EXCELLENCE

HOME

PK 42002 SH HIGH PERFORMANCE





LIFETIME EXCELLENCE

HOME

OVERVIEW

FEATURES

VIDEO

ABOUT US

PK 42
HIGH



PALFINGER AG - 5020 Salzburg, Austria - E-Mail: info@palfinger.com

EVERYTHING UNDER CONTROL. THE NEW PALCOM P7

When PALFINGER combines its customers' demands and all of the company's expertise into a single product, the outcome can only be revolutionary: The new PALCOM P7, PALFINGER's first in-house development in the field of loader crane remote controls. Ergonomically designed and packed to the hilt with innovative control functions and safety features. This remote control system enables effortless, safe and easy operation.

WWW.PALFINGER.COM



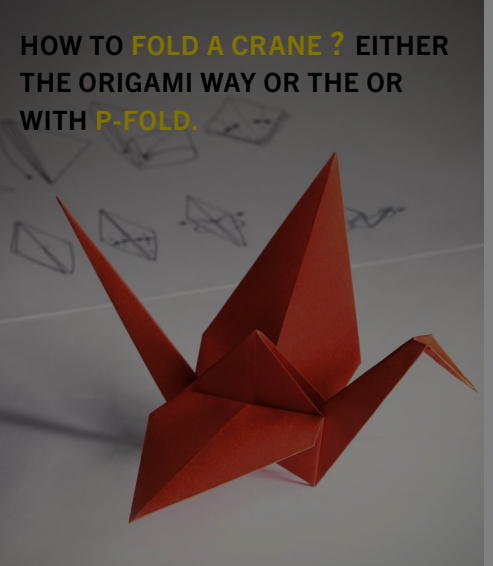
EVERYTHING
UNDER CONTROL.



THE NEW PALCOM P7

→ SHOW MORE

P-FOLD



HOW TO FOLD A CRANE ? EITHER
THE ORIGAMI WAY OR THE OR
WITH P-FOLD.

→ SHOW MORE



LIFETIME EXCELLENCE

HOME

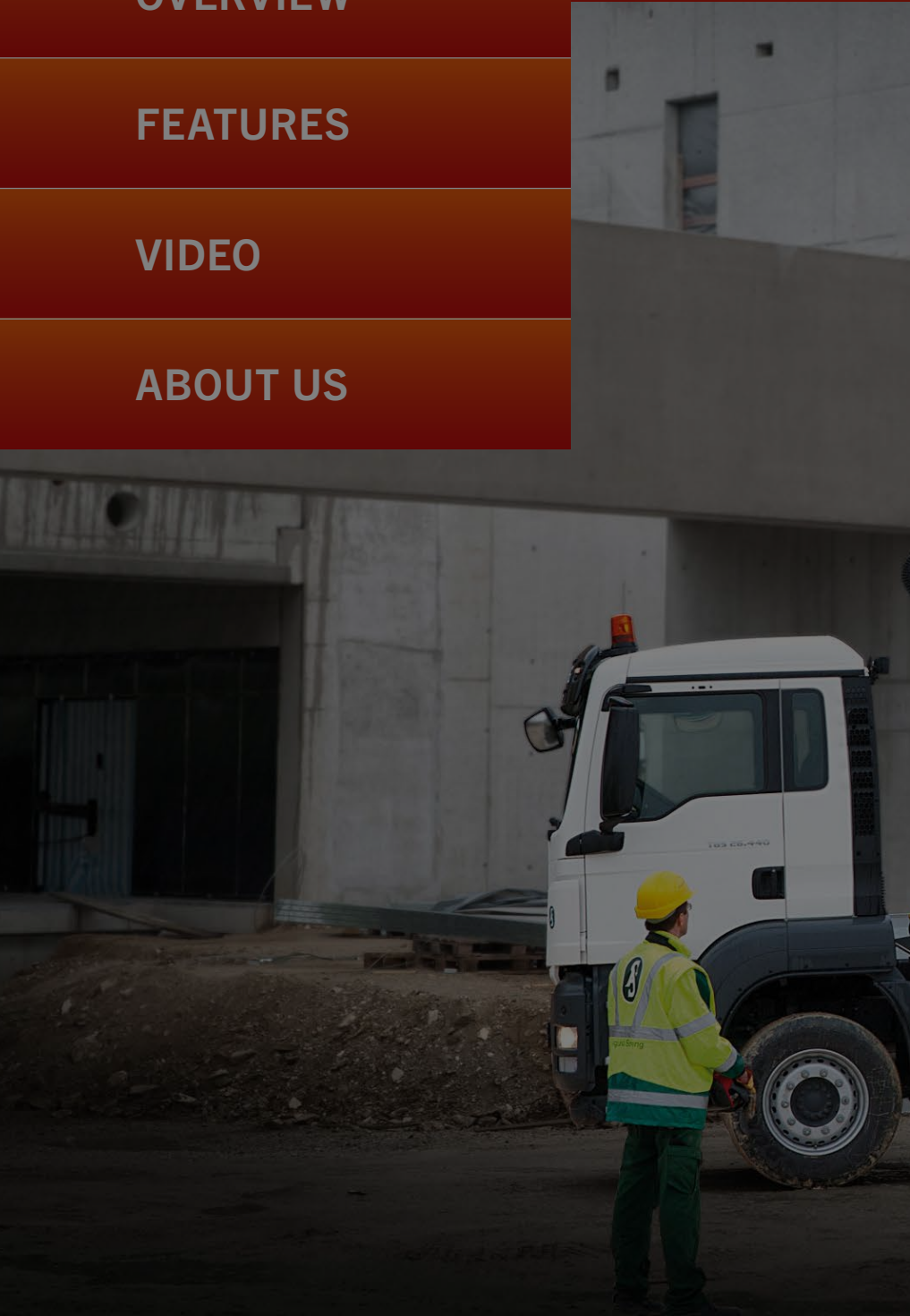
OVERVIEW

FEATURES

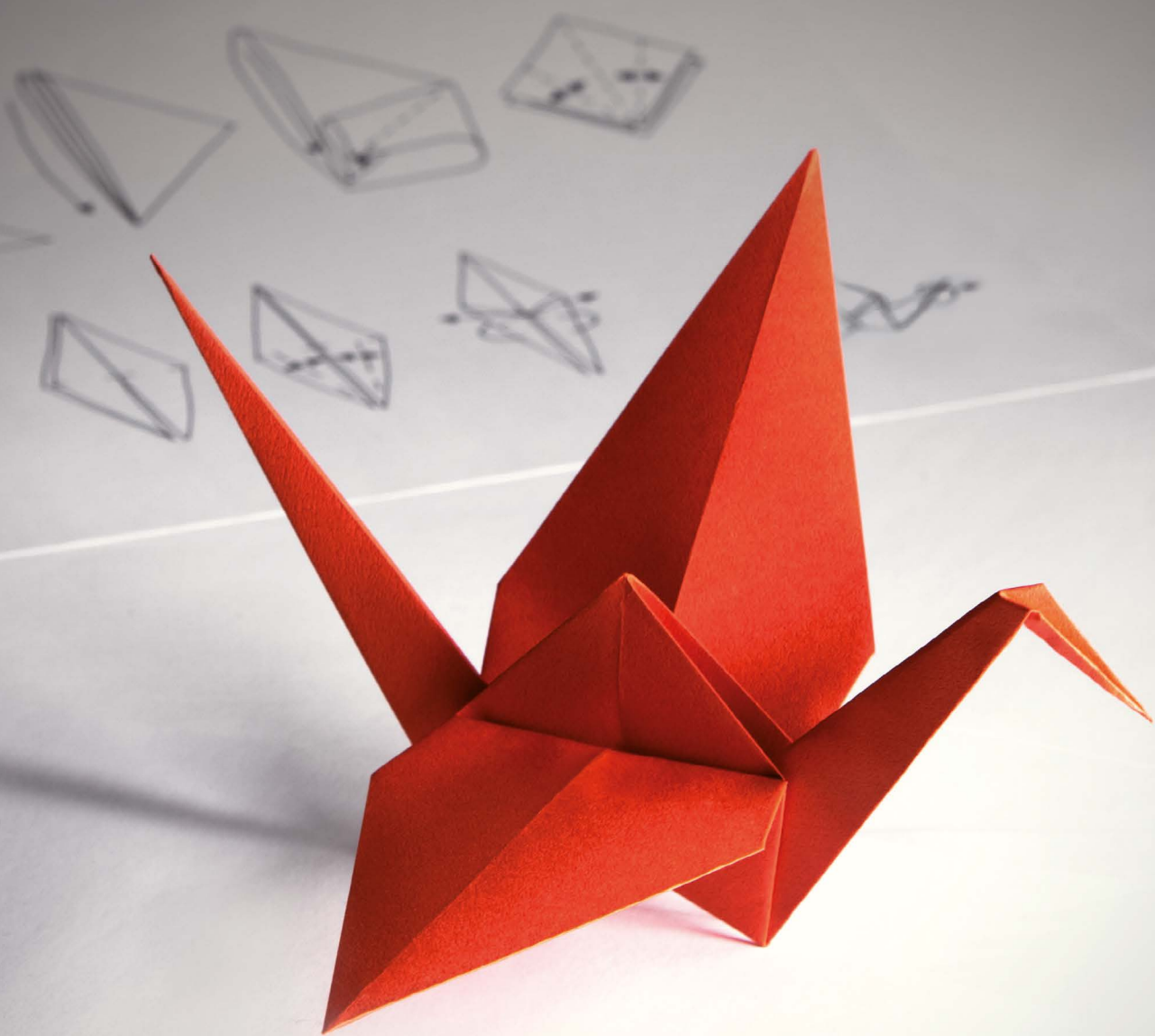
VIDEO

ABOUT US

PK 42
HIGH



HOW TO **FOLD A CRANE?**
EITHER THE ORIGAMI WAY
OR WITH **P-FOLD.**



Palfinger AG · 5020 Salzburg, Austria · E-Mail: info@palfinger.com

PERFECTLY FOLDED BY FINGERTIP CONTROL

The new assistance system P-Fold makes folding and unfolding an easy job for the crane operator. All movements of the crane are activated by only one control lever. This significantly increases operator comfort and prevents costly damage.

www.palfinger.com

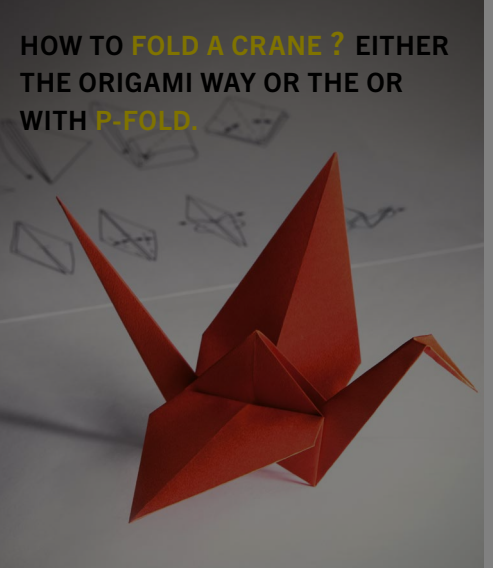


EVERYTHING
UNDER CONTROL.



→ SHOW MORE

P-FOLD



→ SHOW MORE

PK 42002 SH HIGH PERFORMANCE



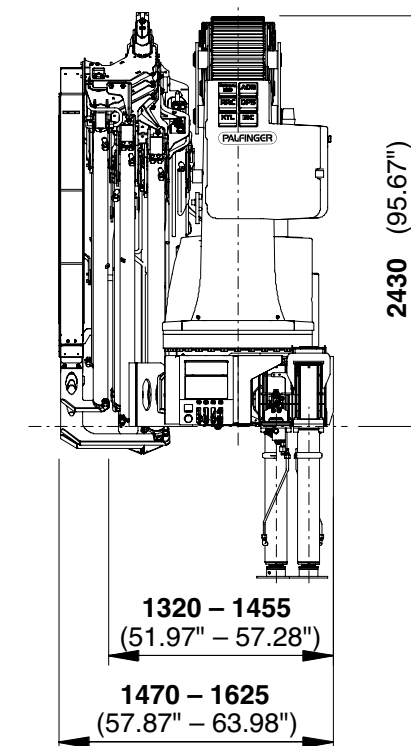
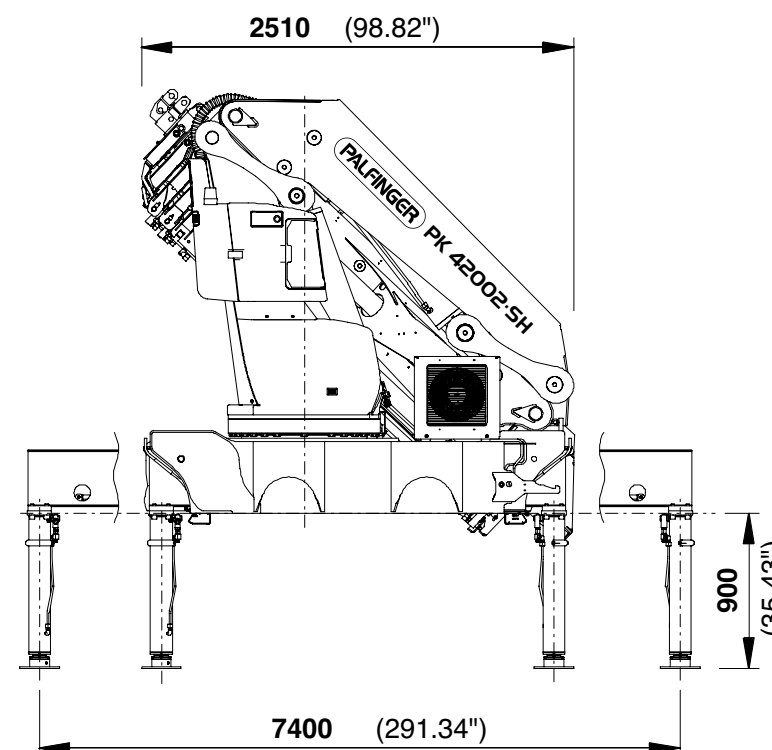
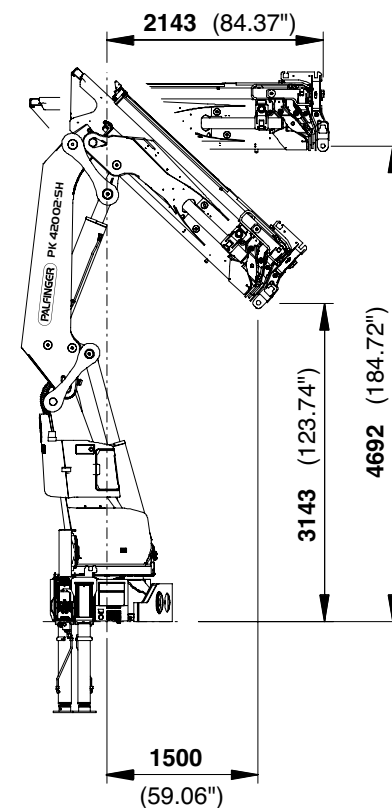
GENERAL

TECHNICAL DATA

APPLICATION

POWER LINK PLUS DELIVERS EXTREME VERSATILITY AND ENABLES CRANE WORK EVEN UNDER DIFFICULT CONDITION

- ➔ High value retention due to KTL coating
- ➔ More comfort and safety due to soft stop
- ➔ Maximum utilisation of the working range due to HPSC
- ➔ More lifting power due to S-HPLS
- ➔ More efficient and faster due to continuous slewing





LIFETIME EXCELLENCE

OVERVIEW

PK 42002 SH
HIGH PERFORMANCE



GENERAL		TECHNICAL DATA		APPLICATION	
TECHNICAL SPECIFICATIONS (EN 12999 HC1 HD5/B3)					
Max. lifting moment	41.1 mt/402.8 kNm	297070 ft.lbs			
Max. lifting capacity	15000 kg/147.2 kN	33070 lbs			
Max. hydraulic outreach	21.0 m	68' 11"			
Max. manual outreach	25.2 m	82' 8"			
Max. outreach (with fly-jib)	31.2 m	102' 4"			
Slewing angle	endless				
Slewing torque with 1 gear	3.8 mt/37.3 kNm	27490 ft.lbs			
Slewing torque with 2 gears	5.0 mt / 49.1 kNm	36170 ft.lbs			
Stabiliser spread	7.4 m	24' 3"			
Fitting space required (std.)	min. 1.33 m/4' 4"	min. 1.47 m/4' 10"			
Width folded	2.51 m	8' 3"			
Max. operating pressure	365 bar	5293 psi			
Recommended pump capacity	from 90 l/min	23.8 US gal./min			
	to 120 l/min	31.7 US gal./min			
Dead weight (std.)	3851 kg	8490 lbs			

D

E

F

G

D PJ125E JV1 DPS PLUS

E PJ080E JV2 DPS PLUS



LIFETIME EXCELLENCE

HOME

OVERVIEW

FEATURES

VIDEO

ABOUT US

PK 42 HIGH

GENERAL

TECHNICAL DATA

Max. lifting mo

Max. lifting cap

Max. hydraulic

Max. manual o

Max. outreach

Slewing angle

Slewing torque

Slewing torque

Stabiliser spre

Fitting space r

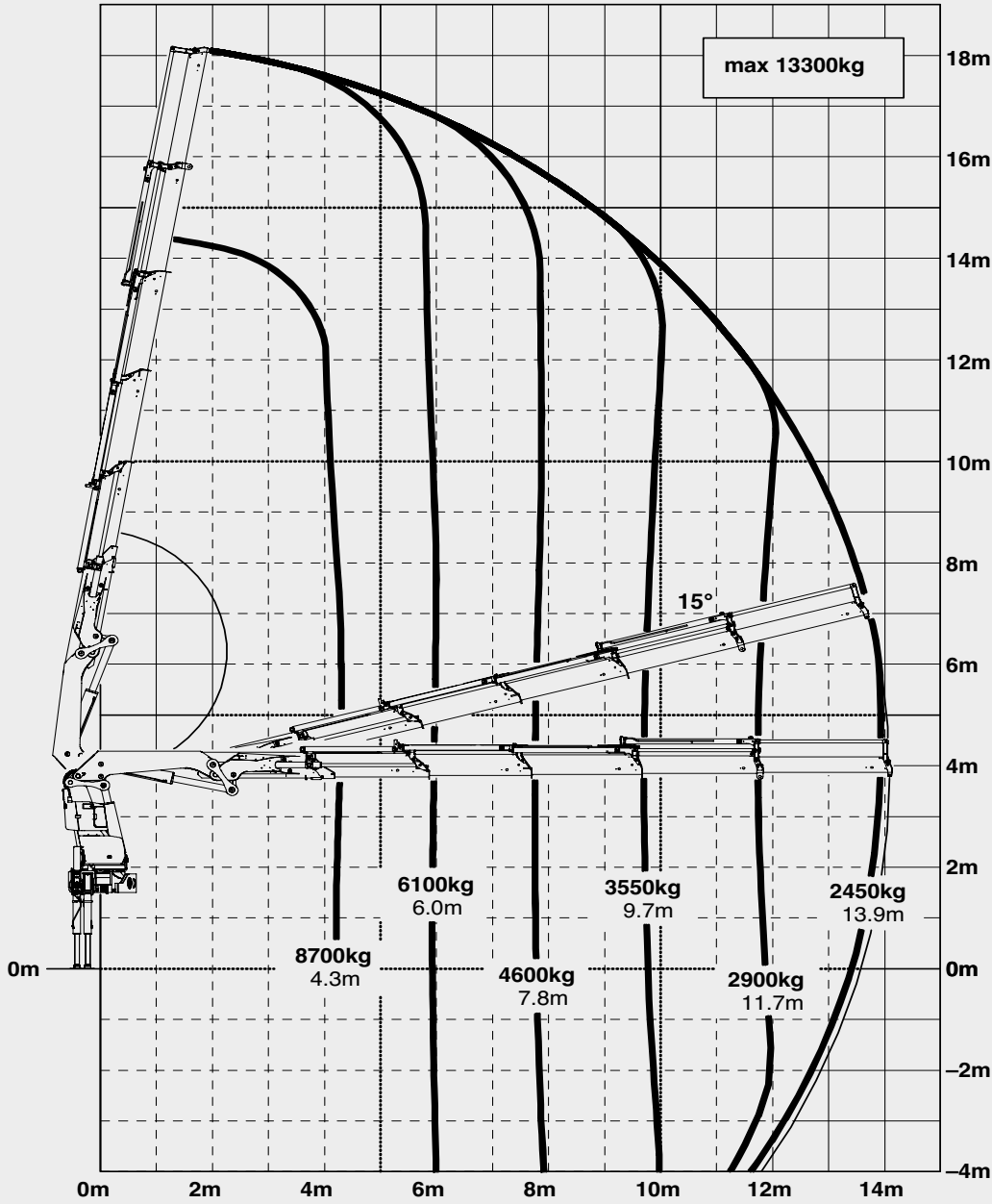
Width folded

Max. operating

Recommended

Dead weight (s

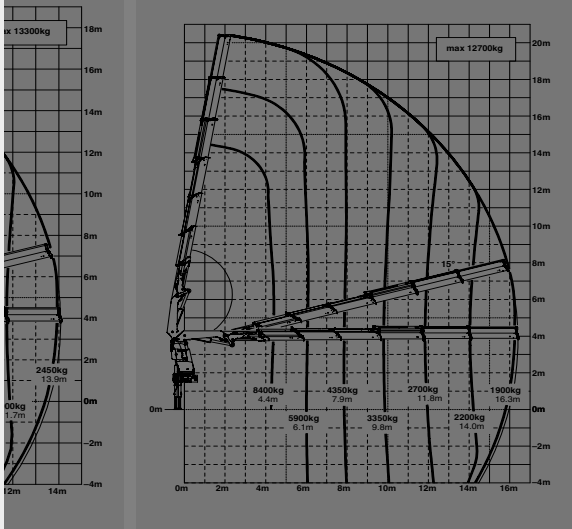
D



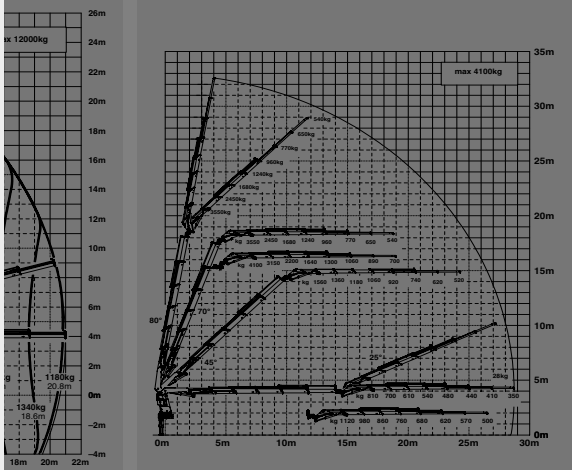
max.		13300 kg	29300 lbs
4.3 m	14' 1"	8700 kg	19300 lbs
6.0 m	19' 8"	6100 kg	13500 lbs
7.8 m	25' 7"	4600 kg	10100 lbs
9.7 m	31' 10"	3550 kg	7900 lbs
11.7 m	38' ' 5"	2900 kg	6400 lbs
13.9 m	45' 7"	2450 kg	5300 lbs



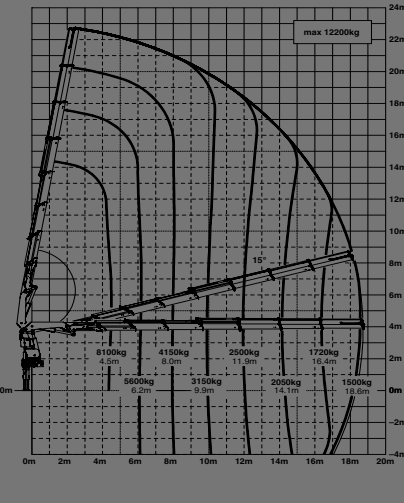
E



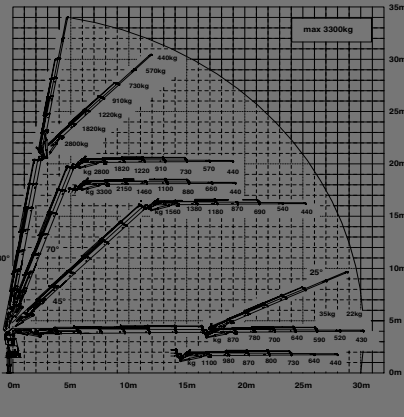
D PJ125E JV1 DPS PLUS



F



E PJ080E JV2 DPS PLUS





LIFETIME EXCELLENCE

HOME

OVERVIEW

FEATURES

VIDEO

ABOUT US

PK 42 HIGH

GENERAL

TECHNICAL DATA

Max. lifting mo

Max. lifting cap

Max. hydraulic

Max. manual o

Max. outreach

Slewing angle

Slewing torque

Slewing torque

Stabiliser spre

Fitting space r

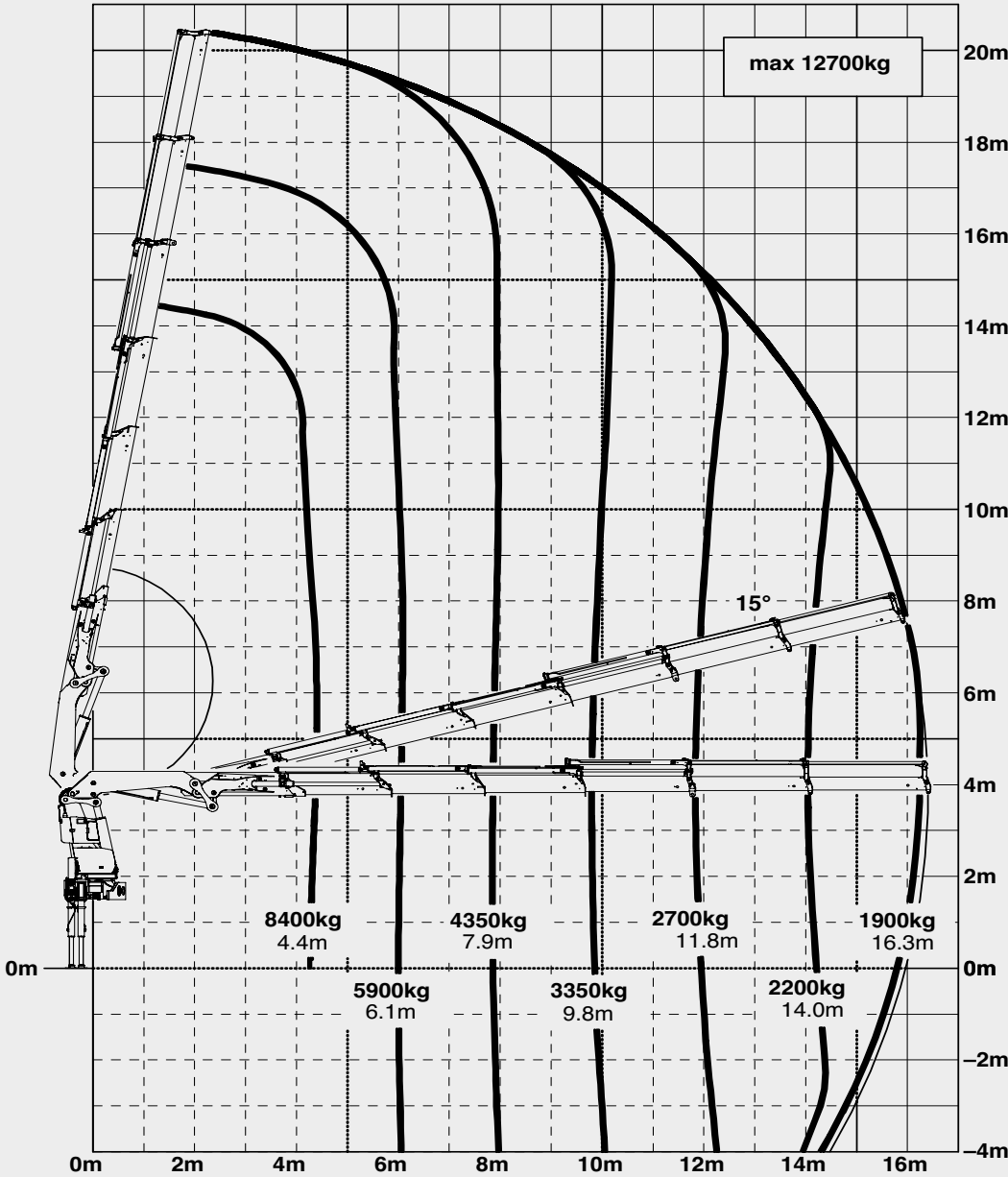
Width folded

Max. operating

Recommended

Dead weight (s

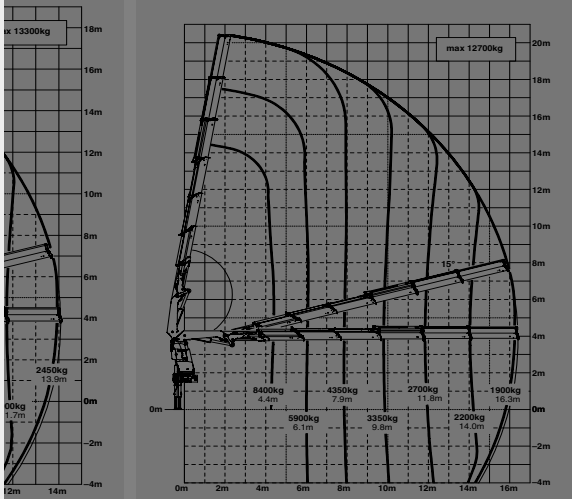
E



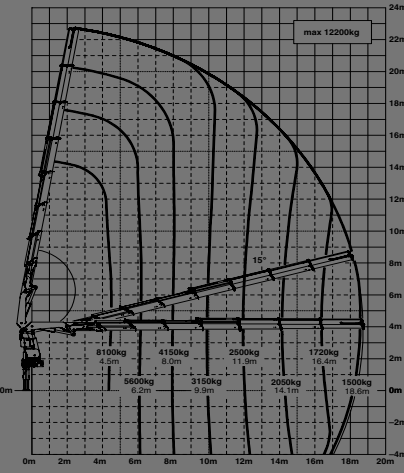
max.		12700 kg	28000 lbs
4.4 m	14' 5"	8400 kg	18500 lbs
6.1 m	20' 0"	5900 kg	12900 lbs
7.9 m	25' 11"	4350 kg	9600 lbs
9.8 m	32' 2"	3350 kg	7400 lbs
11.8 m	38' 9"	2700 kg	5900 lbs
14.0 m	45' 11"	2200 kg	4900 lbs
16.3 m	53' 6"	1900 kg	4200 lbs



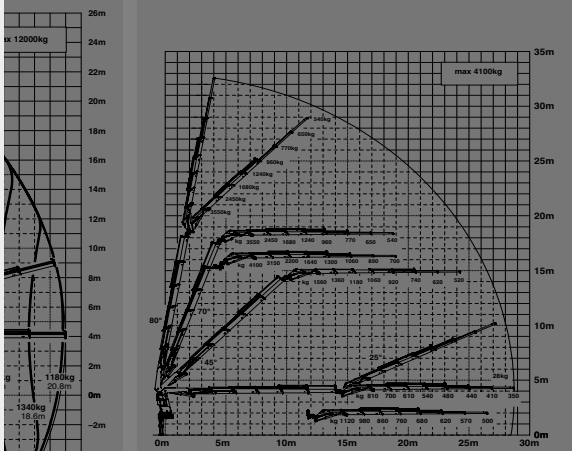
E



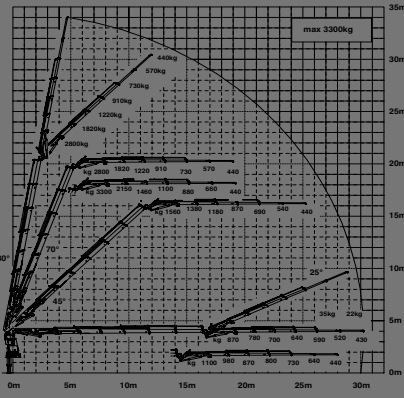
F



D PJ125E JV1 DPS PLUS



E PJ080E JV2 DPS PLUS





LIFETIME EXCELLENCE

HOME

OVERVIEW

FEATURES

VIDEO

ABOUT US

PK 42 HIGH

GENERAL

TECHNICAL DATA

Max. lifting mo

Max. lifting cap

Max. hydraulic

Max. manual o

Max. outreach

Slewing angle

Slewing torque

Slewing torque

Stabiliser spre

Fitting space r

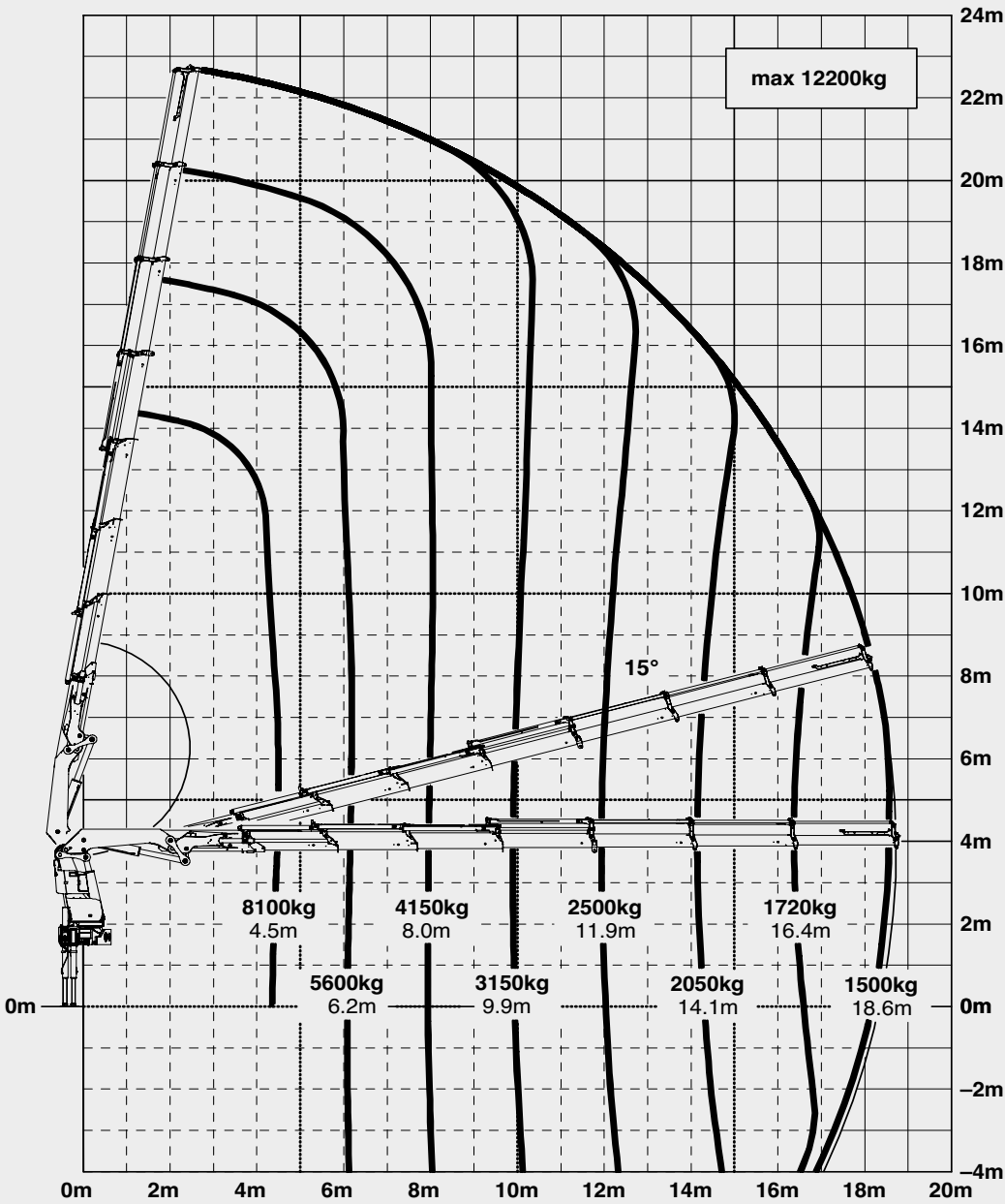
Width folded

Max. operating

Recommended

Dead weight (s

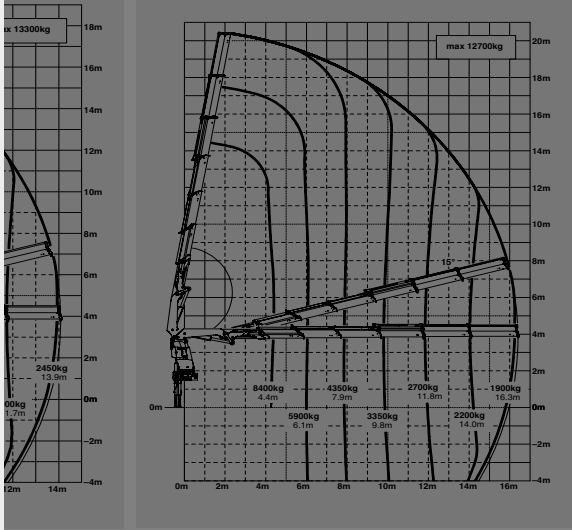
F



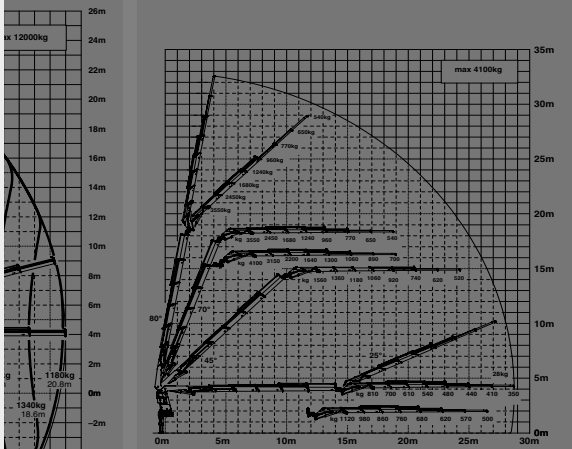
max.		12200 kg	26900 lbs
4.5 m	14' 9"	8100 kg	17900 lbs
6.2 m	20' 4"	5600 kg	12400 lbs
8.0 m	26' 3"	4150 kg	9100 lbs
9.9 m	32' 6"	3150 kg	7000 lbs
11.9 m	39' 1"	2500 kg	5500 lbs
14.1 m	46' 3"	2050 kg	4500 lbs
16.4 m	53' 10"	1720 kg	3800 lbs
18.6 m	61' 0"	1500 kg	3300 lbs



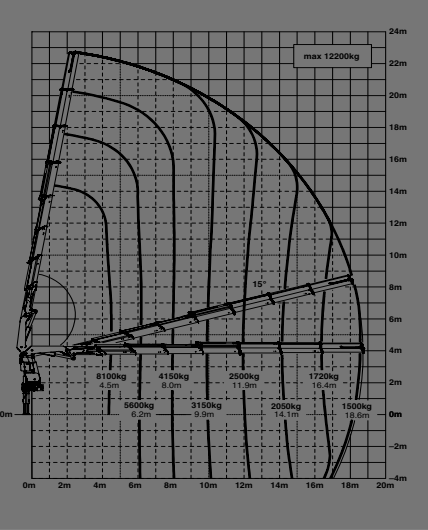
E



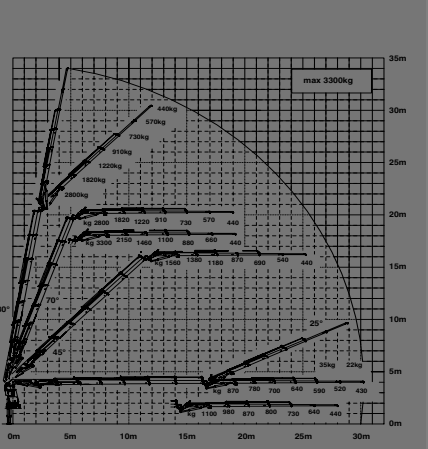
D PJ125E JV1 DPS PLUS



F



E PJ080E JV2 DPS PLUS





LIFETIME EXCELLENCE

HOME

OVERVIEW

FEATURES

VIDEO

ABOUT US

PK 42
HIGH

GENERAL

TECHNICAL DATA

Max. lifting mo

Max. lifting cap

Max. hydraulic

Max. manual o

Max. outreach

Slewing angle

Slewing torque

Slewing torque

Stabiliser spre

Fitting space r

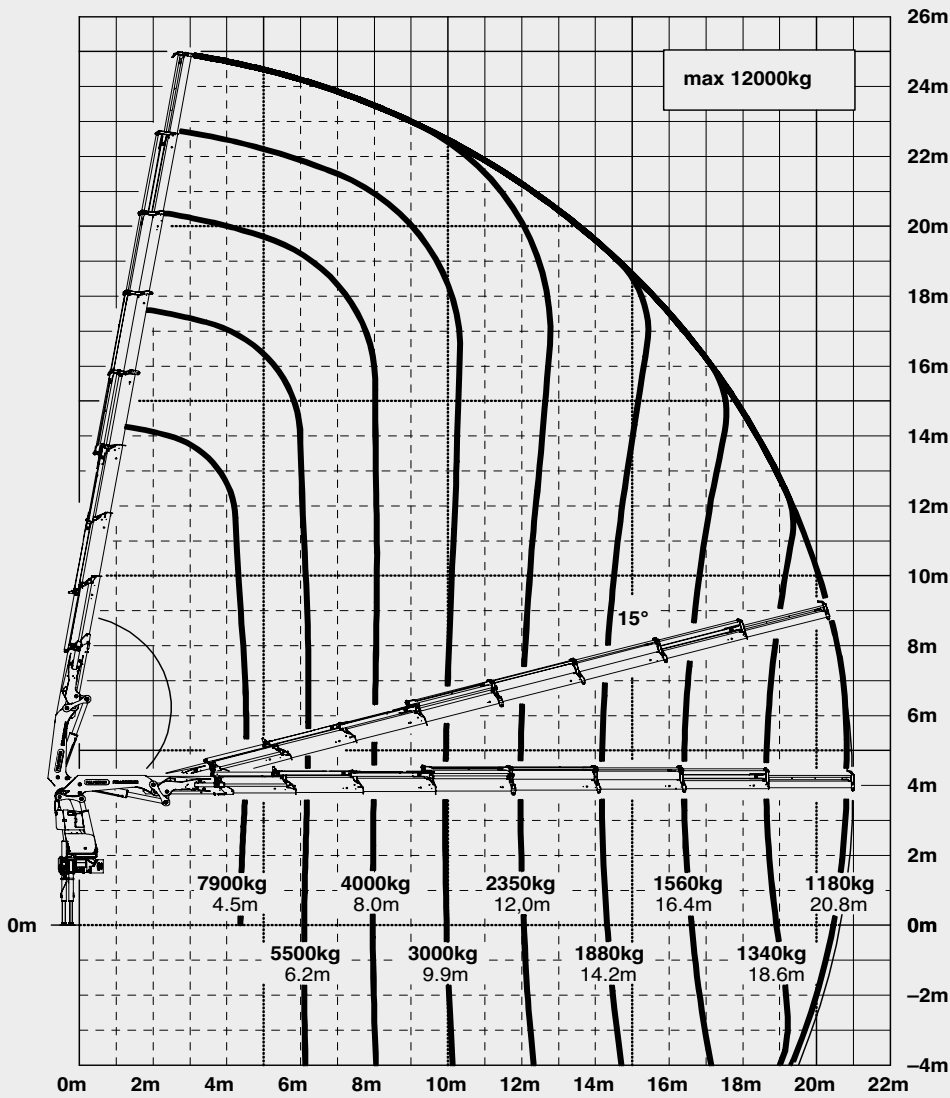
Width folded

Max. operating

Recommended

Dead weight (s

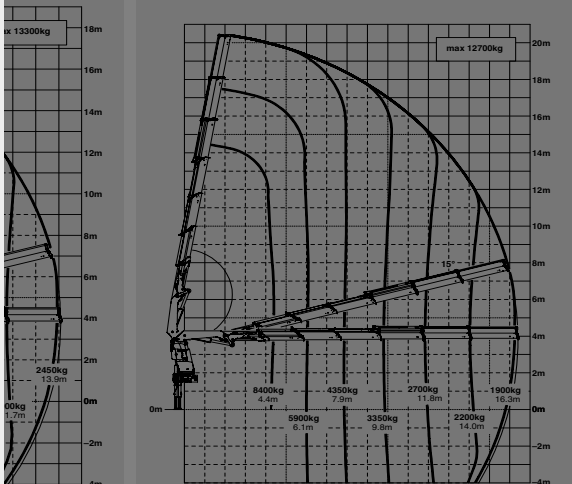
G



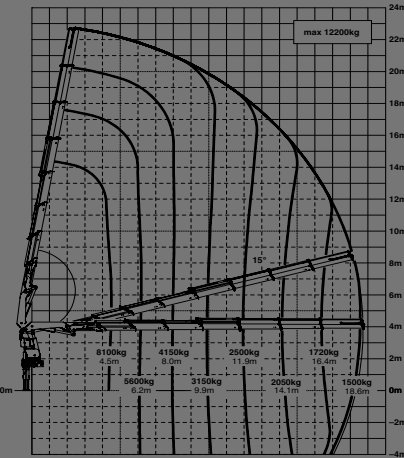
max.		12000 kg	26500 lbs
4.5 m	14' 9"	7900 kg	17500 lbs
6.2 m	20' 4"	5500 kg	12100 lbs
8.0 m	26' 3"	4000 kg	8800 lbs
9.9 m	32' 6"	3000 kg	6600 lbs
12.0 m	39' 4"	2350 kg	5200 lbs
14.2 m	46' 7"	1880 kg	4150 lbs
16.4 m	53' 10"	1560 kg	3450 lbs
18.6 m	61' 0"	1340 kg	2950 lbs
20.8 m	68' 3"	1180 kg	2600 lbs
23.0 m*	75' 6"	900 kg	1980 lbs
25.0 m*	82' 0"	600 kg	1320 lbs



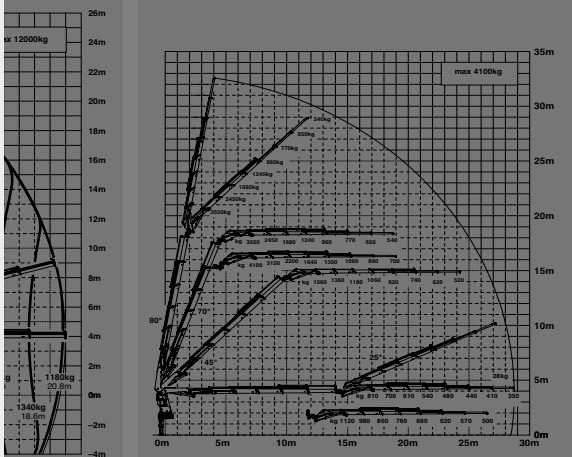
E



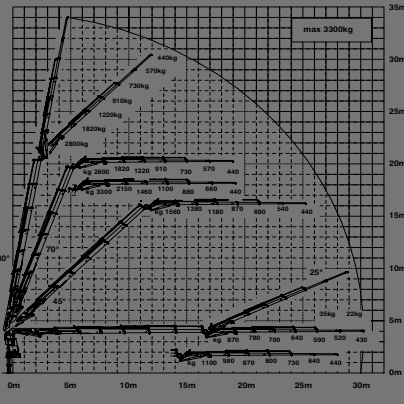
F



D PJ125E JV1 DPS PLUS



E PJ080E JV2 DPS PLUS





LIFETIME EXCELLENCE

HOME

OVERVIEW

FEATURES

VIDEO

ABOUT US

PK 420
HIGH

D PJ125E JV1 DPS PLUS

GENERAL

TECHNICAL DATA

Max. lifting mo

Max. lifting cap

Max. hydraulic

Max. manual o

Max. outreach

Slewing angle

Slewing torque

Slewing torque

Stabiliser spre

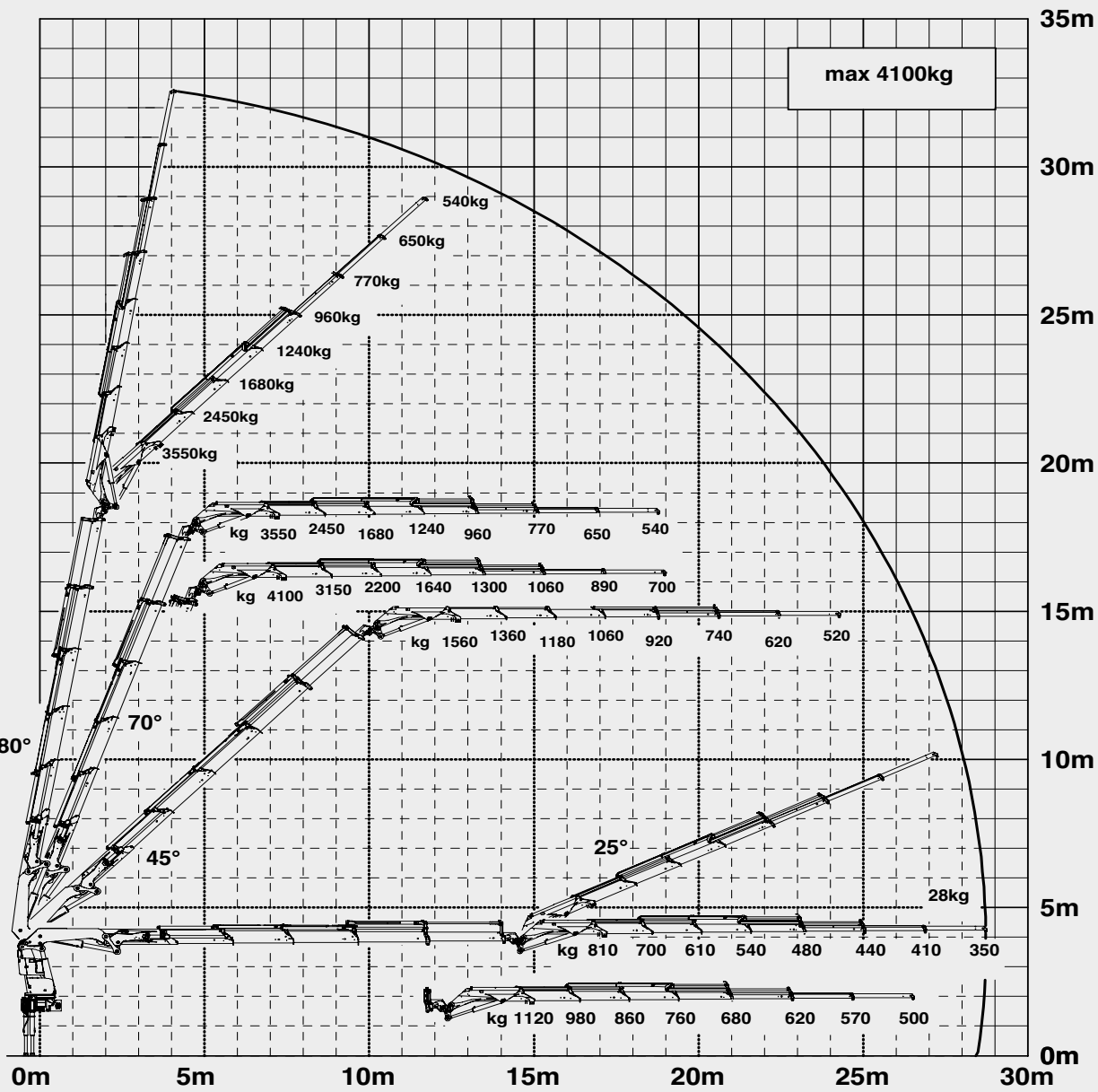
Fitting space r

Width folded

Max. operating

Recommended

Dead weight (sta.)



E

F

D PJ125E JV1 DPS PLUS

E PJ080E JV2 DPS PLUS



LIFETIME EXCELLENCE

HOME

OVERVIEW

FEATURES

VIDEO

ABOUT US

PK 420
HIGH

E PJ080E JV2 DPS PLUS

GENERAL

TECHNICAL DATA

Max. lifting mo

Max. lifting cap

Max. hydraulic

Max. manual o

Max. outreach

Slewing angle

Slewing torque

Slewing torque

Stabiliser spre

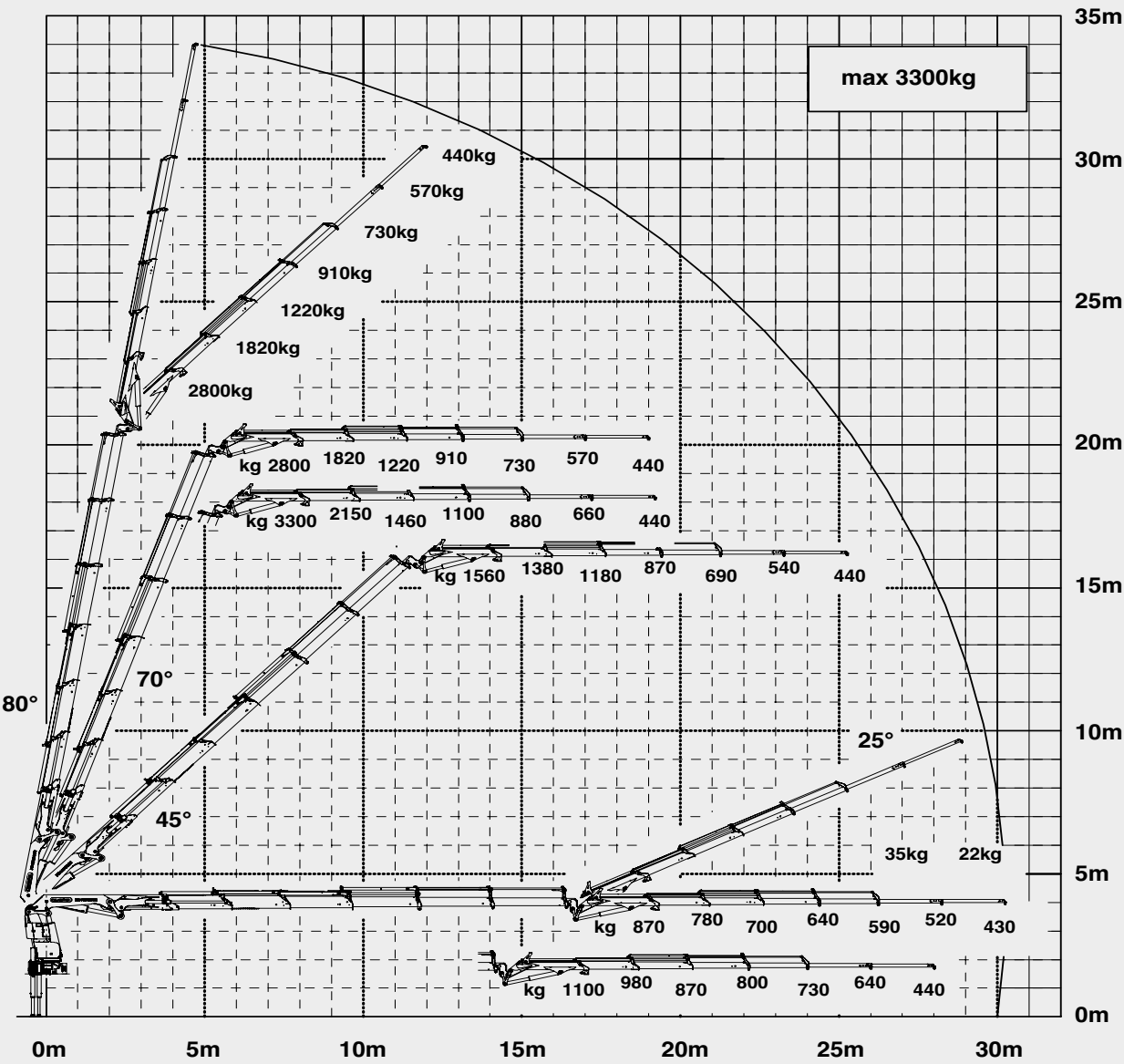
Fitting space r

Width folded

Max. operating

Recommended

Dead weight (sta.)



E

F

D PJ125E JV1 DPS PLUS

E PJ080E JV2 DPS PLUS



LIFETIME EXCELLENCE

OVERVIEW

PK 42002 SH

HIGH PERFORMANCE



GENERAL	TECHNICAL DATA	APPLICATION	
---------	----------------	-------------	--



LIFETIME EXCELLENCE

PK 42002 SH HIGH PERFORMANCE



FEATURES



- KTL**
protected
- Paltronic 150**
controlled
- RRC**
Radio Remote Control
operated
- HPSC**
High Performance Stability Control
monitored
- AOS**
Active Oscillation Suppression
inside
- DPS plus**
Dual Power System
activated



LIFETIME EXCELLENCE

HOME

OVERVIEW

FEATURES

VIDEO

ABOUT US

PK 42002 SH

HIGH PERFORMANCE



LOW-MAINTENANCE EXTENSION SYSTEM +

SOFT STOP +

+ CON



LOW-MAINTENANCE EXTENSION SYSTEM

REDUCES SERVICE TIME

With sliding elements made of synthetic material and the high-quality KTL coating, this boom system significantly simplifies service performed by the operator. This saves time and money – and protects the environment.

KTLPALFINGER

protected

Paltronic150

controlled

RRC

Radio Remote Control

operated

HPSC

High Performance Stability Control

monitored

AOS

Active Oscillation Suppression

inside

DPSplus

Dual Power System

activated





LIFETIME EXCELLENCE

HOME

OVERVIEW

FEATURES

VIDEO

ABOUT US

PK 42002 SH

HIGH PERFORMANCE



LOW-MAINTENANCE EXTENSION SYSTEM +

SOFT STOP +

+ CON



POWER LINK PLUS
HIGH VARIETY OF USES

With the 15-degree reverse linkage system, you can reach through low door openings and also work inside buildings. Heavy crane work – even in difficult conditions.

KTL

protected

Paltronic 150

controlled

RRC

Radio Remote Control

operated

HPSC

High Performance Stability Control

monitored

AOS

Active Oscillation Suppression

inside

DPS plus

Dual Power System

activated



LIFETIME EXCELLENCE

HOME

OVERVIEW

FEATURES

VIDEO

ABOUT US

PK 42002 SH

HIGH PERFORMANCE



LOW-MAINTENANCE EXTENSION SYSTEM +

SOFT STOP +

+ CON



CONTINUOUS SLEWING SYSTEM
UNRESTRICTED MOVEMENT

More efficient in operation due to faster loading cycles, since the crane can be slewed over a shorter distance. The crane works more efficiently and faster.

KTLPALFINGER

protected

Paltronic150

controlled

RRC

Radio Remote Controloperated

HPSC

High Performance Stability Controlmonitored

AOS

Active Oscillation Suppressioninside

DPSplus

Dual Power Systemactivated





LIFETIME EXCELLENCE

HOME

OVERVIEW

FEATURES

VIDEO

ABOUT US

PK 42002 SH

HIGH PERFORMANCE



LOW-MAINTENANCE EXTENSION SYSTEM +

SOFT STOP +

+ CON



SOFT STOP FUNCTION

MORE COMFORT AND SAFETY

The Soft Stop function is an electronic limit position damper. It causes gentle braking of all crane movements before the limit position is reached. Hence, jerky movements and load impacts can be avoided. The crane can be operated more gently and precisely.

KTLPALFINGER

protected

Paltronic150

controlled

RRC

Radio Remote Controloperated

HPSC

High Performance Stability Controlmonitored

AOS

Active Oscillation Suppressioninside

DPSplus

Dual Power Systemactivated



LIFETIME EXCELLENCE

HOME

OVERVIEW

FEATURES

VIDEO

ABOUT US

PK 42002 SH

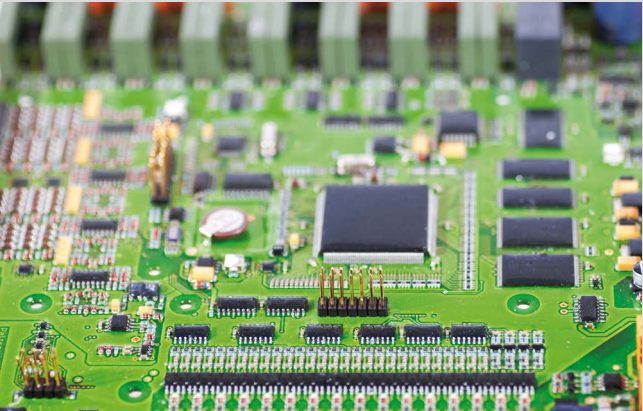
HIGH PERFORMANCE



LOW-MAINTENANCE EXTENSION SYSTEM +

SOFT STOP +

+ CON



S-HPLS
MORE LIFTING POWER WHEN IT IS REALLY NEEDED

S-HPLS is one of the most important functions of the PALTRONIC 150. It is a fully automatic system for increasing the lifting power. Depending on the need, there is continuous adaptation of the lifting power and speed of the crane.

KTLPALTRONIC 150RRC

protectedcontrolledoperated

HPSCAOSDPS plus

monitoredinsideactivated



LIFETIME EXCELLENCE

PK 42002 SH HIGH PERFORMANCE



ABOUT US

TO US, “LIFETIME EXCELLENCE”
MEANS SEEING TOP PERFORMANCE
AS A MINIMUM REQUIREMENT.

LIFETIME EXCELLENCE is our promise. Our core message.
Our brand essence. To our customers, it means top performance
without compromise. The most cost-effective, reliable and innovative
lifting solutions in a global network of expert service partners
– for the entire product lifetime.

EXCELLENCE
ECONOMY &
EFFICIENCY

PERFORMANCE

EXCELLENCE
INNOVATION &
FLEXIBILITY

SERVICE

EXCELLENCE
SERVICE &
LOCATIONS

SUPPORT

EXCELLENCE
RELIABILITY &
EXPERTISE

SAFETY

EXPERTISE

PLAY VIDEO