

**PALFINGER**

LIFETIME EXCELLENCE

HOME

**PK 65002 SH**  
**HIGH PERFORMANCE**







LIFETIME EXCELLENCE

HOME

OVERVIEW

FEATURES

VIDEO

ABOUT US

PK 65  
HIGH



PALFINGER AG - 5020 Salzburg, Austria - E-Mail: info@palfinger.com

# EVERYTHING UNDER CONTROL. THE NEW PALCOM P7

When PALFINGER combines its customers' demands and all of the company's expertise into a single product, the outcome can only be revolutionary: The new PALCOM P7, PALFINGER's first in-house development in the field of loader crane remote controls. Ergonomically designed and packed to the hilt with innovative control functions and safety features. This remote control system enables effortless, safe and easy operation.

WWW.PALFINGER.COM

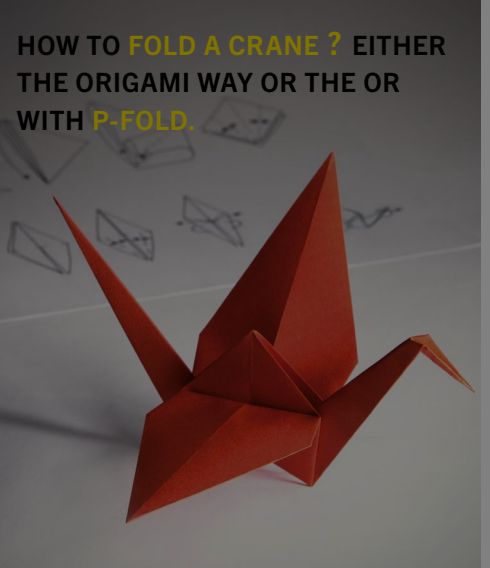


EVERYTHING  
UNDER CONTROL.



→ SHOW MORE

P-FOLD



→ SHOW MORE





LIFETIME EXCELLENCE

HOME

OVERVIEW

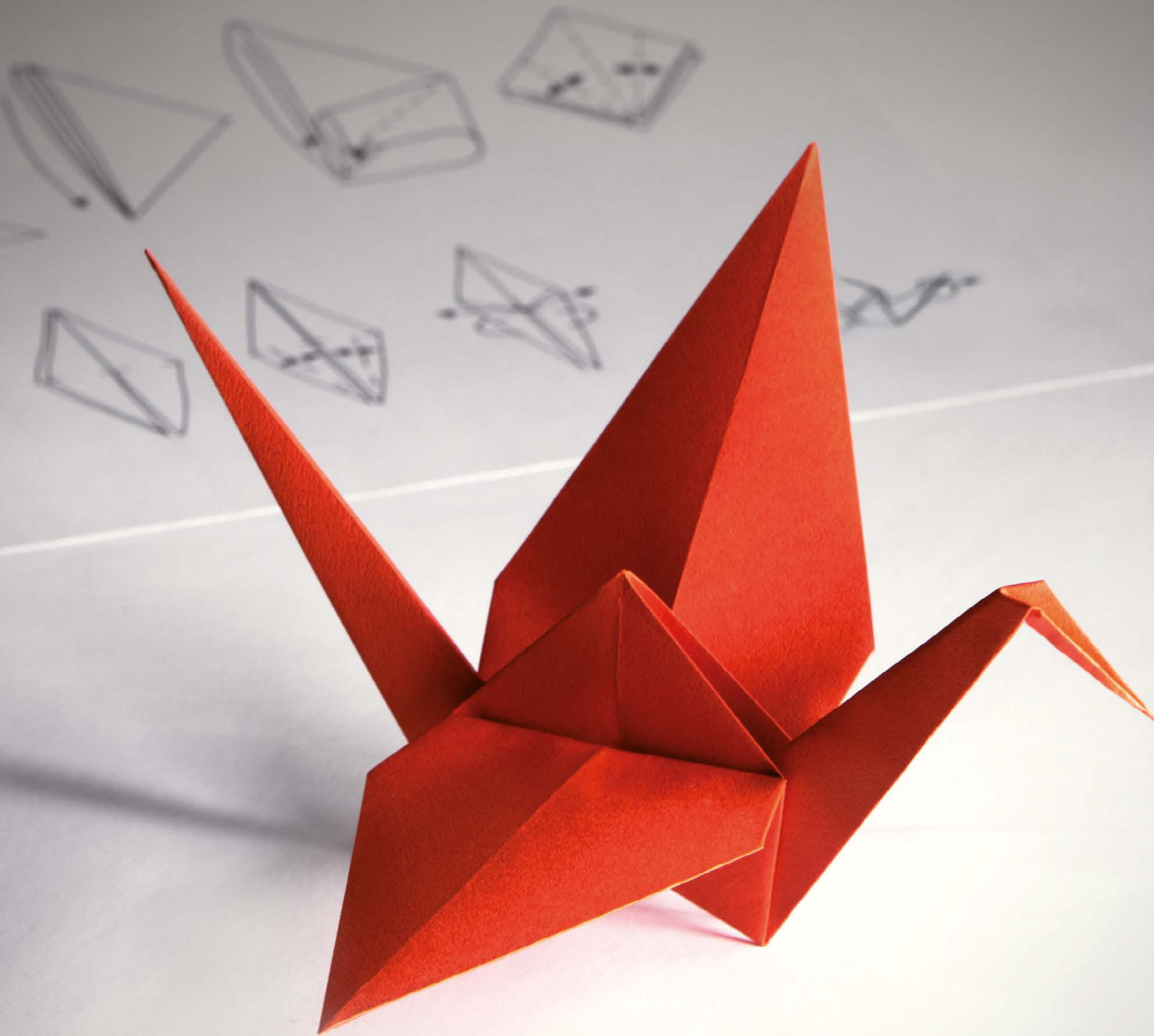
FEATURES

VIDEO

ABOUT US

PK 65  
HIGH

HOW TO FOLD A CRANE?  
EITHER THE ORIGAMI WAY  
OR WITH P-FOLD.



Palfinger AG · 5020 Salzburg, Austria · E-Mail: info@palfinger.com

PERFECTLY FOLDED BY FINGERTIP CONTROL

The new assistance system P-Fold makes folding and unfolding an easy job for the crane operator. All movements of the crane are activated by only one control lever. This significantly increases operator comfort and prevents costly damage.

WWW.PALFINGER.COM

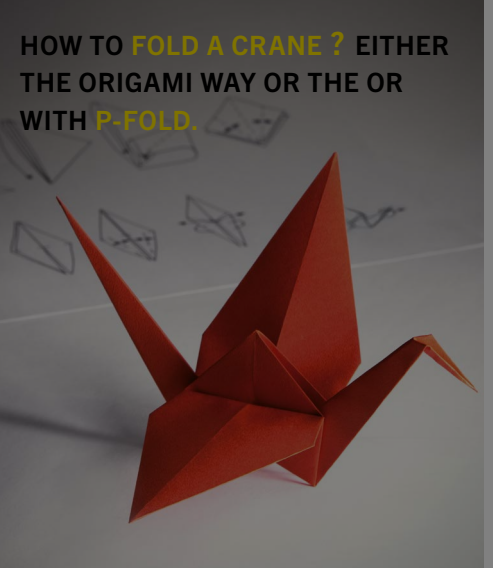


EVERYTHING  
UNDER CONTROL.



→ SHOW MORE

P-FOLD



→ SHOW MORE

# PK 65002 SH HIGH PERFORMANCE



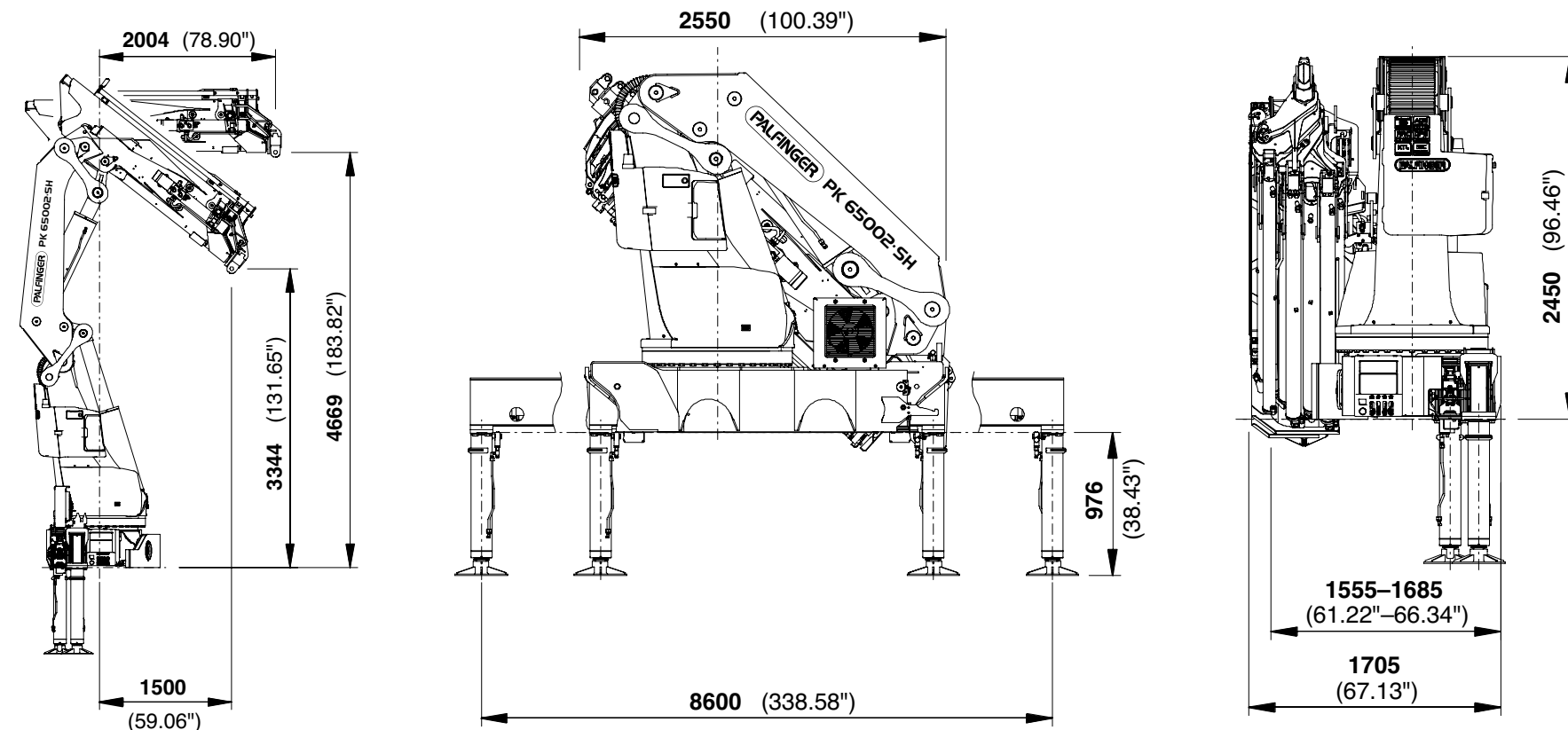
## GENERAL

## TECHNICAL DATA

## APPLICATION

### MAXIMUM LIFTING CAPACITY. HPSC OPENS UP CRANE APPLICATIONS EVEN IN TIGHT SPACES.

- ➔ Maximum reliability due to PAL 150
- ➔ More efficiency with fly jib due to DPS Plus
- ➔ Maximum precision and safety due to optional AOS
- ➔ Increased operating times due to low-maintenance extension system
- ➔ Practical and attractive due to Functional Design







LIFETIME EXCELLENCE

OVERVIEW

PK 65002 SH  
HIGH PERFORMANCE



GENERAL	TECHNICAL DATA	APPLICATION
TECHNICAL SPECIFICATIONS (EN 12999 HC1 HD5/B3)		
Max. lifting moment	62.0 mt/608.0 kNm	448400 ft.lbs
Max. lifting capacity	22000 kg/215.8 kN	48500 lbs
Max. hydraulic outreach	20.4 m	66' 11"
Max. manual outreach	25.1 m	82' 4"
Max. outreach (with fly-jib)	32.6 m	106' 11"
Slewing angle	continuously variable	
Slewing torque with 1 gear	4.5 mt/44.1 kNm	32560 ft.lbs
Slewing torque with 2 gears	7.0 mt / 68.7 kNm	50640 ft.lbs
Stabiliser spread	8.6 m	28' 3"
Fitting space required (std.)	min. 1.56 m/5' 1"	min. 1.71 m/5' 7"
Width folded	2.55 m	8' 4"
Max. operating pressure	365 bar	5293 psi
Recommended pump capacity	from 100 l/min	26.4 US gal./min
	to 120 l/min	31.7 US gal./min
Dead weight (std.)	5040 kg	11110 lbs
B		
C		
E		
G		
D PJ170E JV1 DPS PLUS		
F PJ125E JV1 DPS PLUS		





LIFETIME EXCELLENCE

HOME

OVERVIEW

FEATURES

VIDEO

ABOUT US

# PK 65 HIGH

## GENERAL

## TECHNICAL DATA

Max. lifting mo

Max. lifting cap

Max. hydraulic

Max. manual o

Max. outreach

Slewing angle

Slewing torque

Slewing torque

Stabiliser spre

Fitting space r

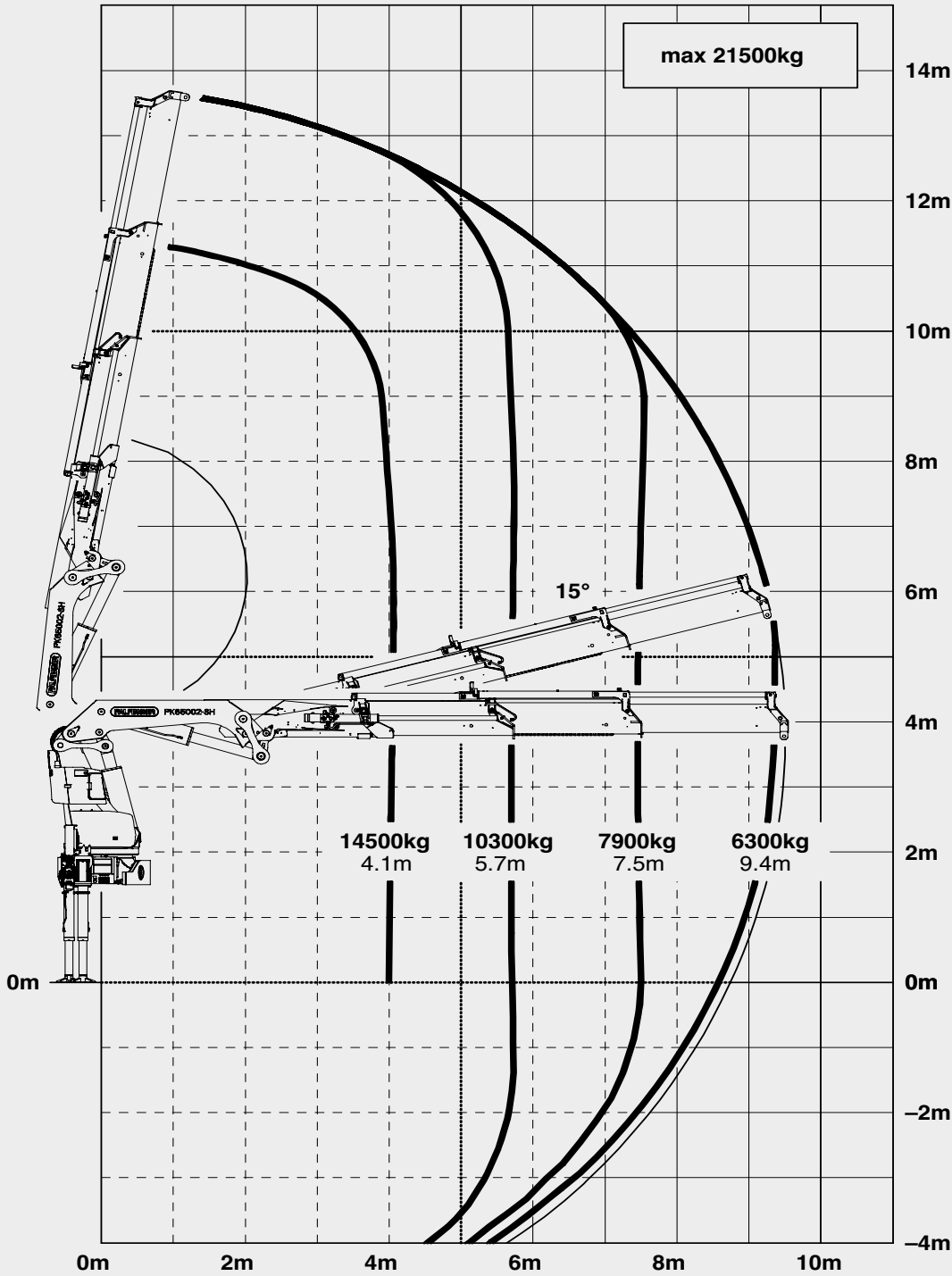
Width folded

Max. operating

Recommended

Dead weight (s

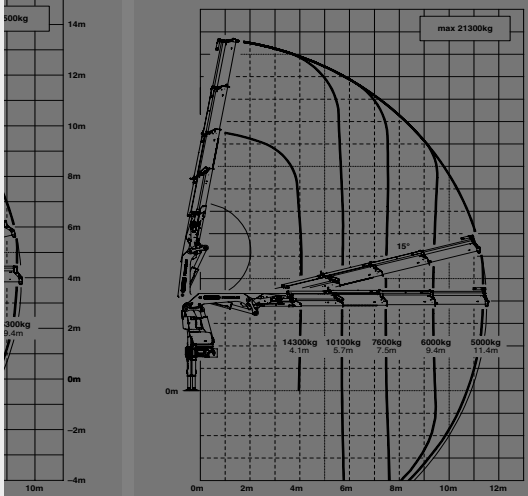
B



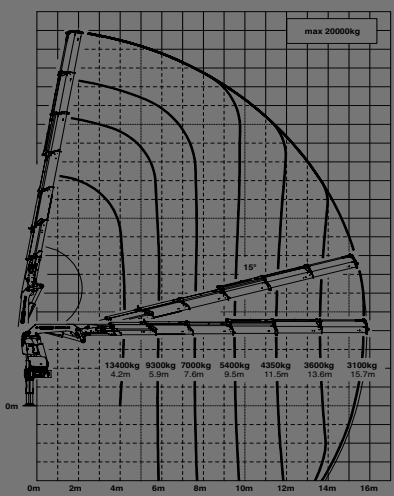
max.		21500 kg	47400 lbs
4.1 m	13'5"	14500 kg	32000 lbs
5.7 m	18'8"	10300 kg	22700 lbs
7.5 m	24'7"	7900 kg	17400 lbs
9.4 m	30'10"	6300 kg	13900 lbs



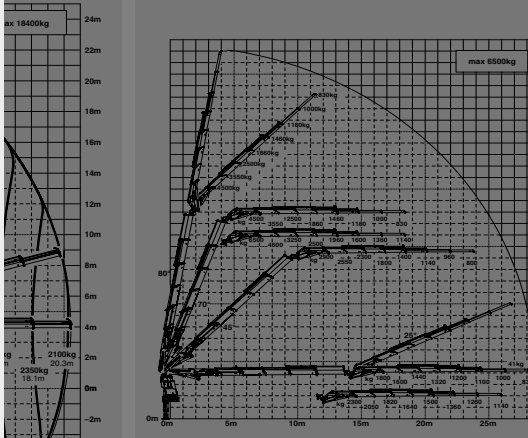
C



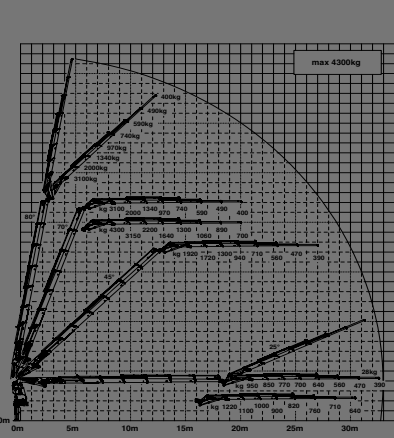
E



D PJ170E JV1 DPS PLUS



F PJ125E JV1 DPS PLUS







LIFETIME EXCELLENCE

HOME

OVERVIEW

FEATURES

VIDEO

ABOUT US

PK 65  
HIGH

GENERAL

TECHNICAL DATA

Max. lifting mo

Max. lifting cap

Max. hydraulic

Max. manual o

Max. outreach

Slewing angle

Slewing torque

Slewing torque

Stabiliser spre

Fitting space r

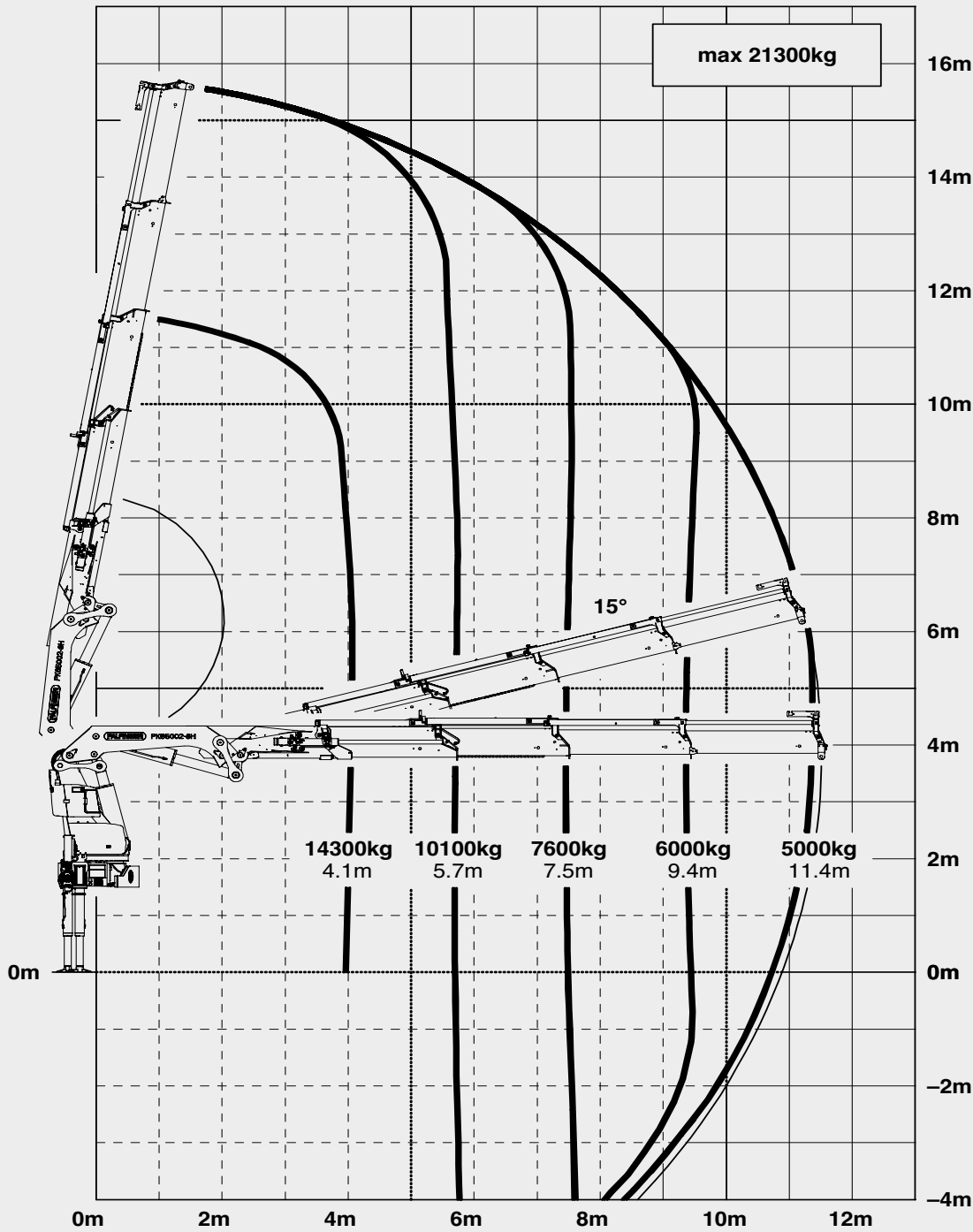
Width folded

Max. operating

Recommended

Dead weight (s

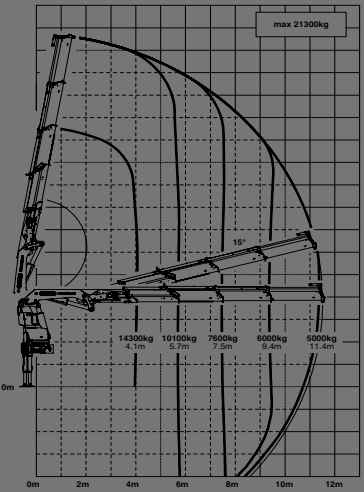
C



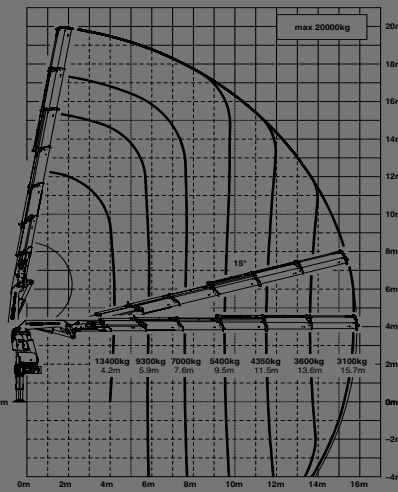
max.		21300 kg	47000 lbs
4.1 m	13'5"	14300 kg	31400 lbs
5.7 m	18'8"	10100 kg	22200 lbs
7.5 m	24'7"	7600 kg	16800 lbs
9.4 m	30'10"	6000 kg	13300 lbs
11.4 m	37'5"	5000 kg	10900 lbs



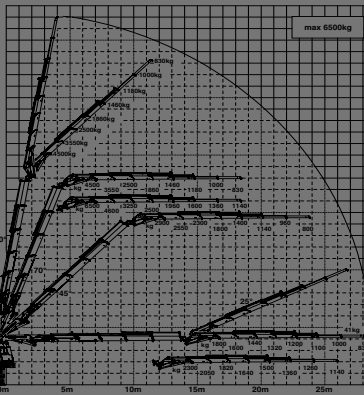
C



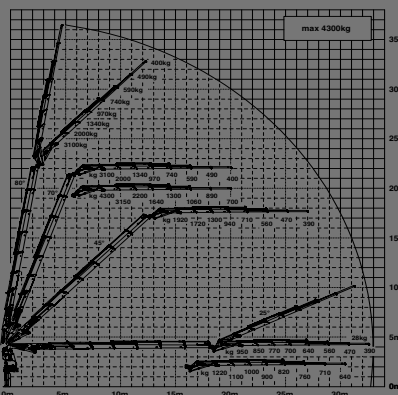
E



D PJ170E JV1 DPS PLUS



F PJ125E JV1 DPS PLUS







LIFETIME EXCELLENCE

HOME

OVERVIEW

FEATURES

VIDEO

ABOUT US

PK 65  
HIGH

GENERAL

TECHNICAL DATA

Max. lifting mo

Max. lifting cap

Max. hydraulic

Max. manual o

Max. outreach

Slewing angle

Slewing torque

Slewing torque

Stabiliser spre

Fitting space r

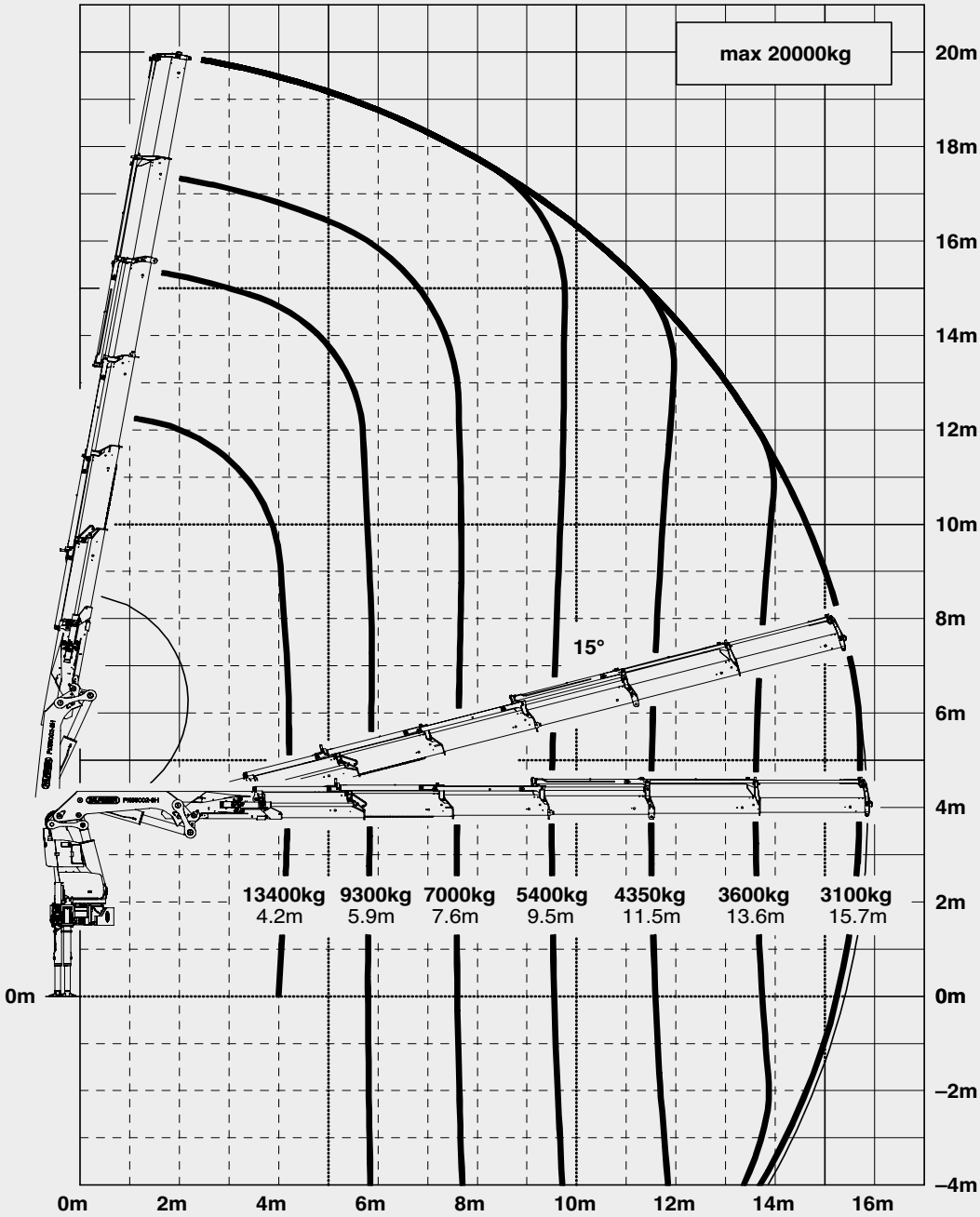
Width folded

Max. operating

Recommended

Dead weight (s

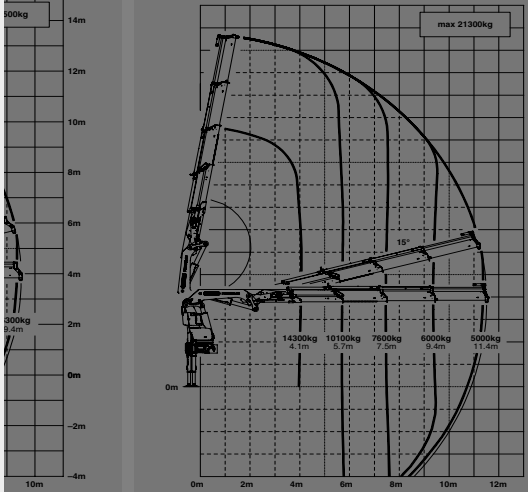
E



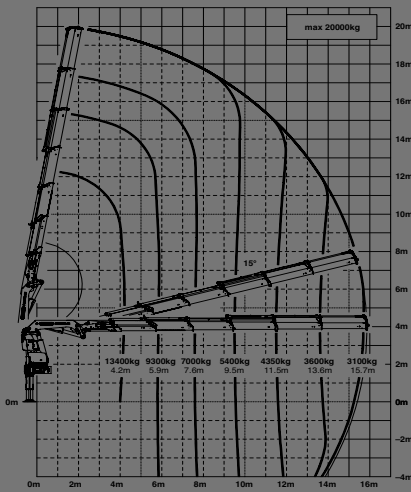
max.		20000 kg	44100 lbs
4.2 m	13'9"	13400 kg	29500 lbs
5.9 m	19'4"	9300 kg	20600 lbs
7.6 m	24'11"	7000 kg	15300 lbs
9.5 m	31'2"	5400 kg	11900 lbs
11.5 m	37'9"	4350 kg	9600 lbs
13.6 m	44'7"	3600 kg	8000 lbs
15.7 m	51'6"	3100 kg	6800 lbs



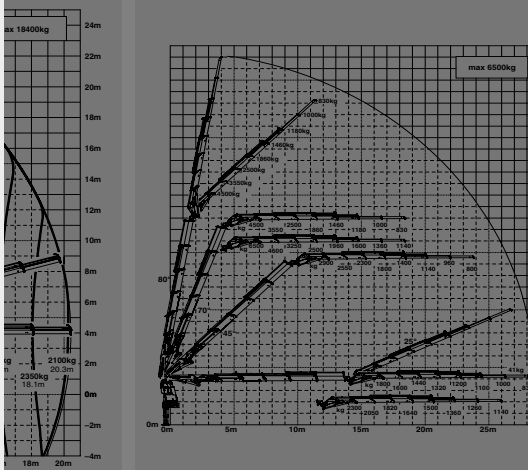
C



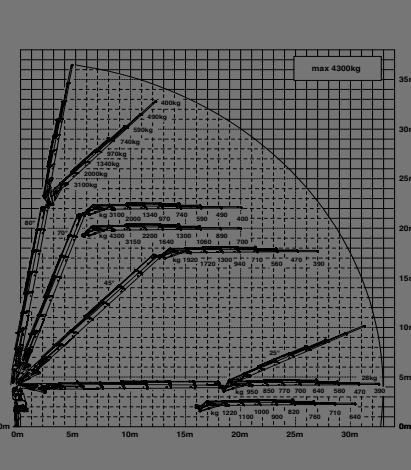
E



D PJ170E JV1 DPS PLUS



F PJ125E JV1 DPS PLUS







LIFETIME EXCELLENCE

HOME

OVERVIEW

FEATURES

VIDEO

ABOUT US

PK 65  
HIGH

GENERAL

TECHNICAL DATA

Max. lifting mo

Max. lifting cap

Max. hydraulic

Max. manual o

Max. outreach

Slewing angle

Slewing torque

Slewing torque

Stabiliser spre

Fitting space r

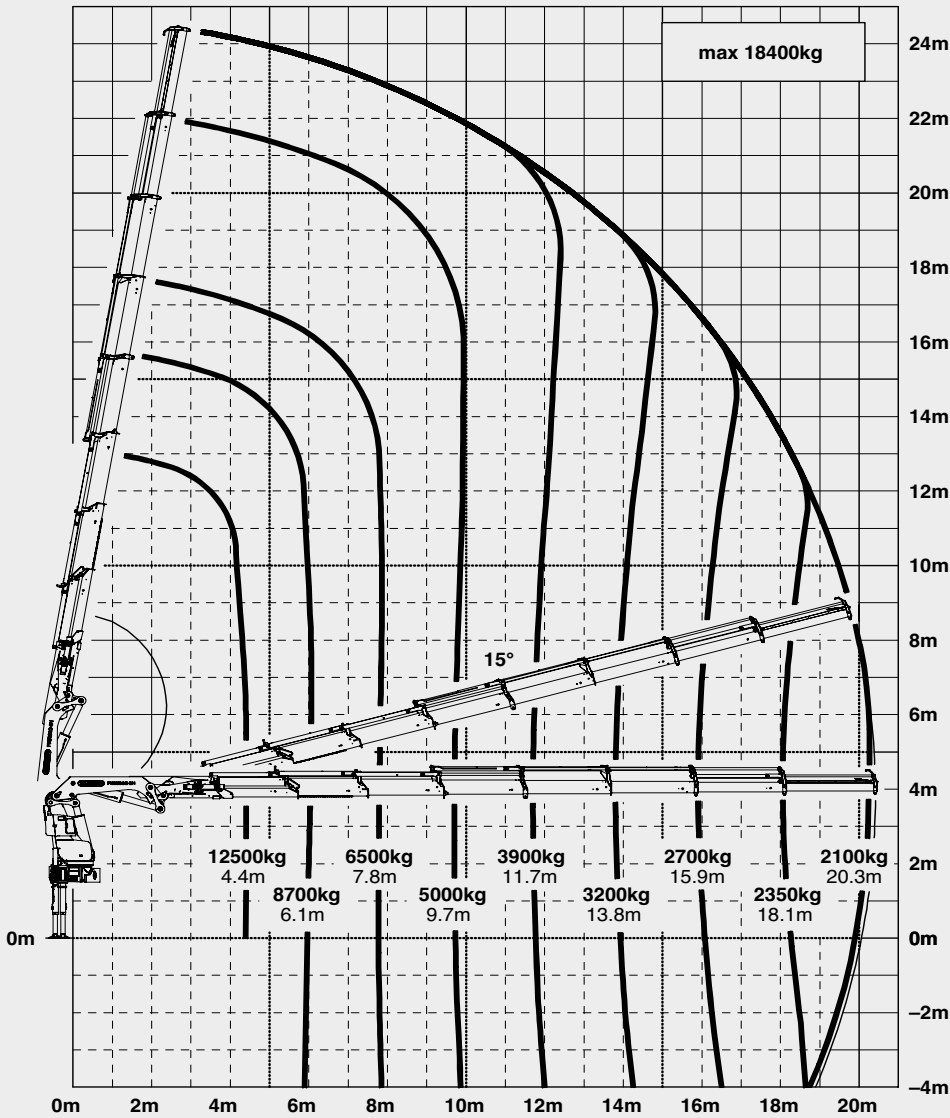
Width folded

Max. operating

Recommended

Dead weight (s

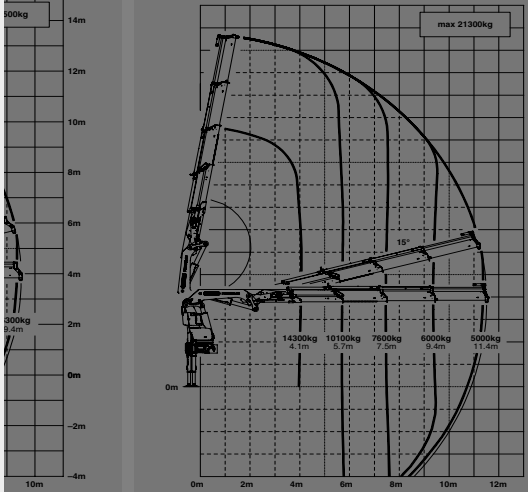
G



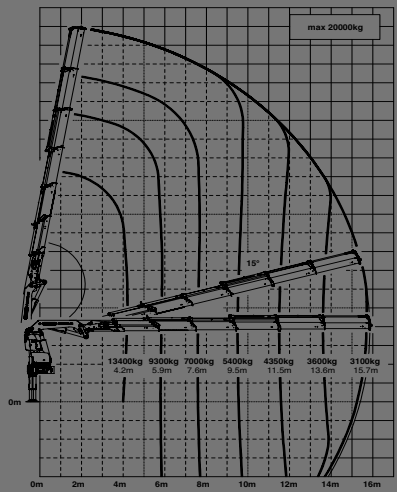
max.		18400 kg	40600 lbs
4.4 m	14'5"	12500 kg	27600 lbs
6.1 m	20'0"	8700 kg	19300 lbs
7.8 m	25'7"	6500 kg	14200 lbs
9.7 m	31'10"	5000 kg	10900 lbs
11.7 m	38'5"	3900 kg	8600 lbs
13.8 m	45'3"	3200 kg	7000 lbs
15.9 m	52'2"	2700 kg	6000 lbs
18.1 m	59'5"	2350 kg	5200 lbs
20.3 m	66'7"	2100 kg	4600 lbs
22.6 m*	74'2"	1780 kg	3900 lbs
24.9 m*	81'8"	1000 kg	2200 lbs



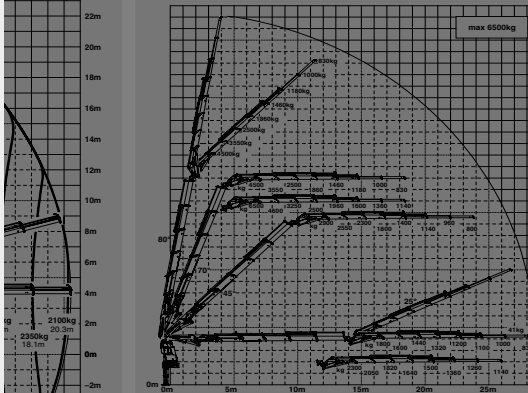
C



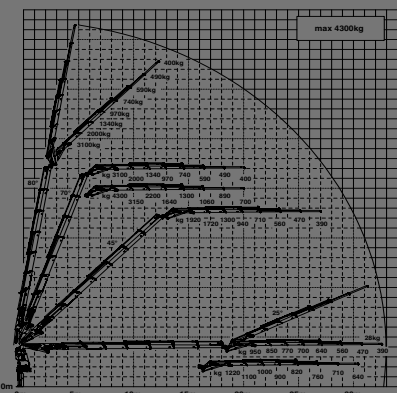
E



D PJ170E JV1 DPS PLUS



F PJ125E JV1 DPS PLUS







LIFETIME EXCELLENCE

HOME

OVERVIEW

FEATURES

VIDEO

ABOUT US

PK 65  
HIGH

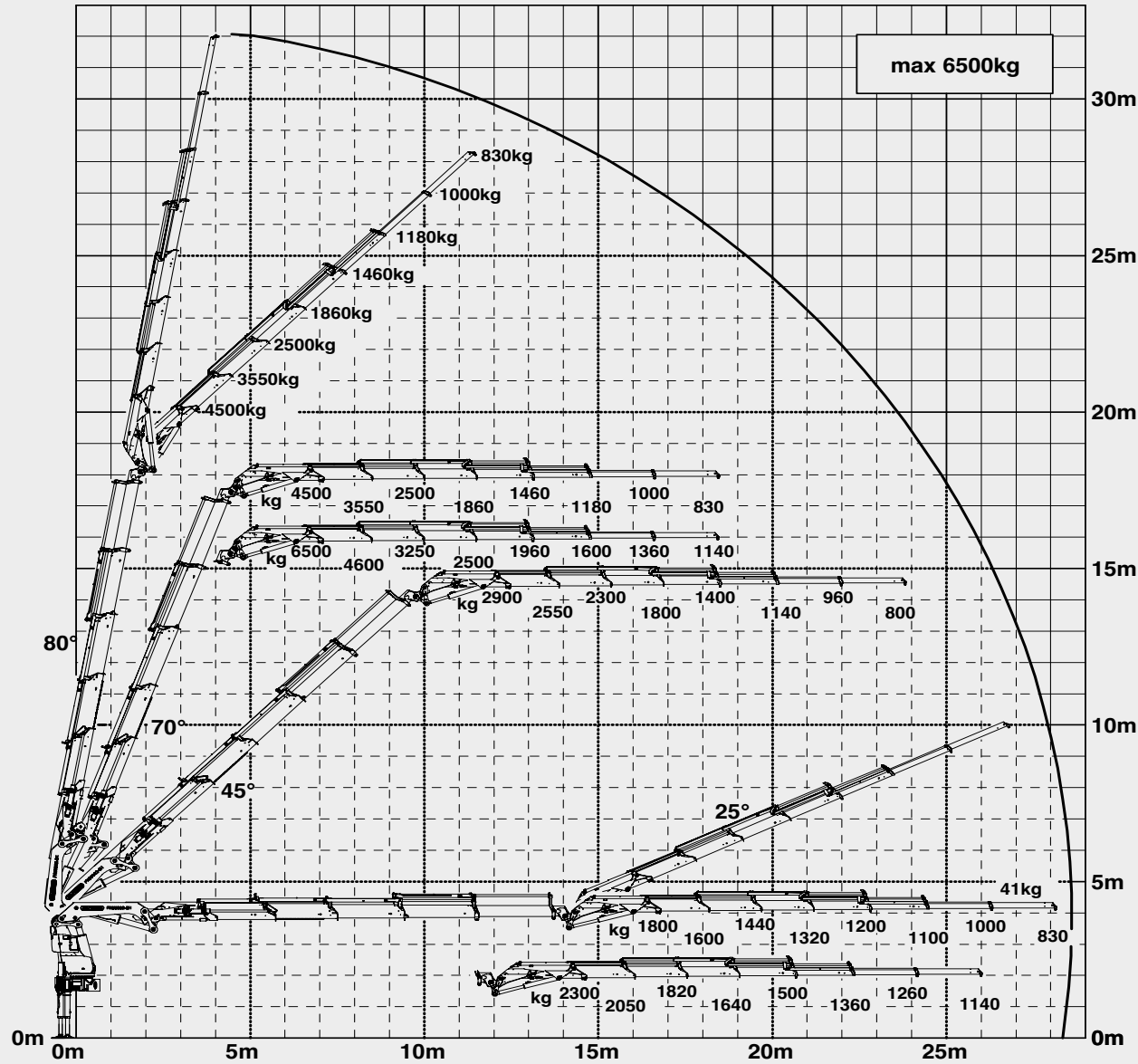
# D PJ170E JV1 DPS PLUS

## GENERAL

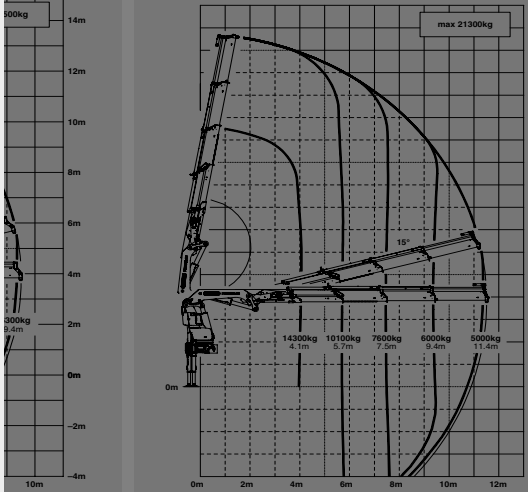
## TECHNICAL DATA

- Max. lifting moment
- Max. lifting capacity
- Max. hydraulic capacity
- Max. manual operation
- Max. outreach
- Slewing angle
- Slewing torque
- Slewing torque
- Stabiliser spread
- Fitting space required
- Width folded
- Max. operating height
- Recommended

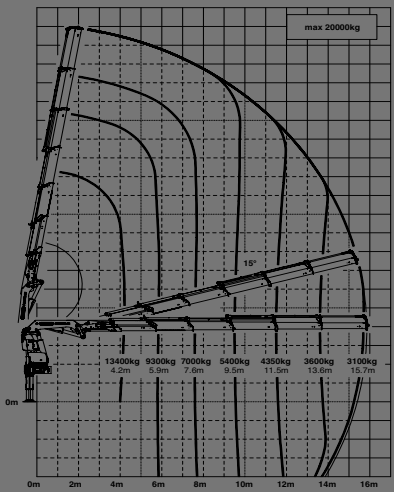
Dead weight (sta.)



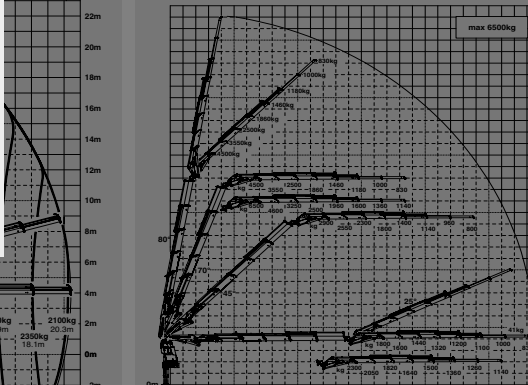
C



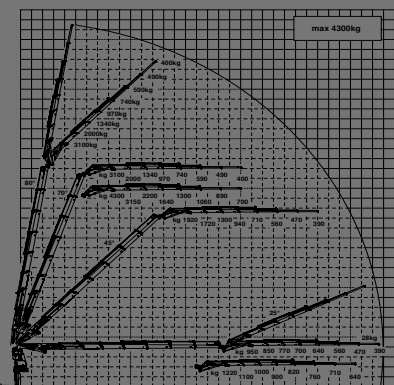
E



D PJ170E JV1 DPS PLUS



F PJ125E JV1 DPS PLUS



# PK 65 F PJ125E JV1 DPS PLUS

## GENERAL

## TECHNICA

Max. lifting mo

Max. lifting cap

Max. hydraulic

Max. manual o

Max. outreach

Slewing angle

Slewing torque

Slewing torque

Stabiliser spre

Fitting space r

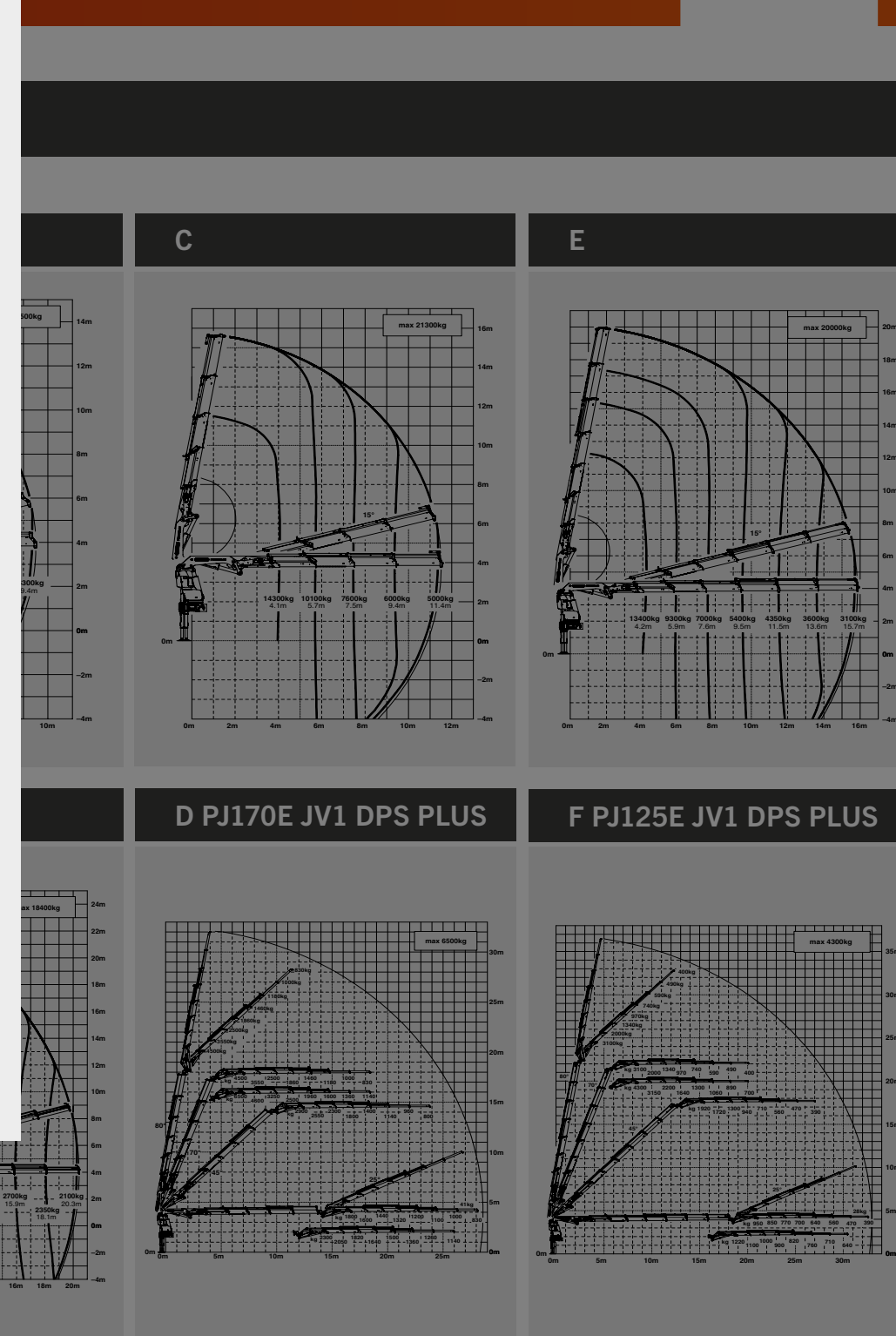
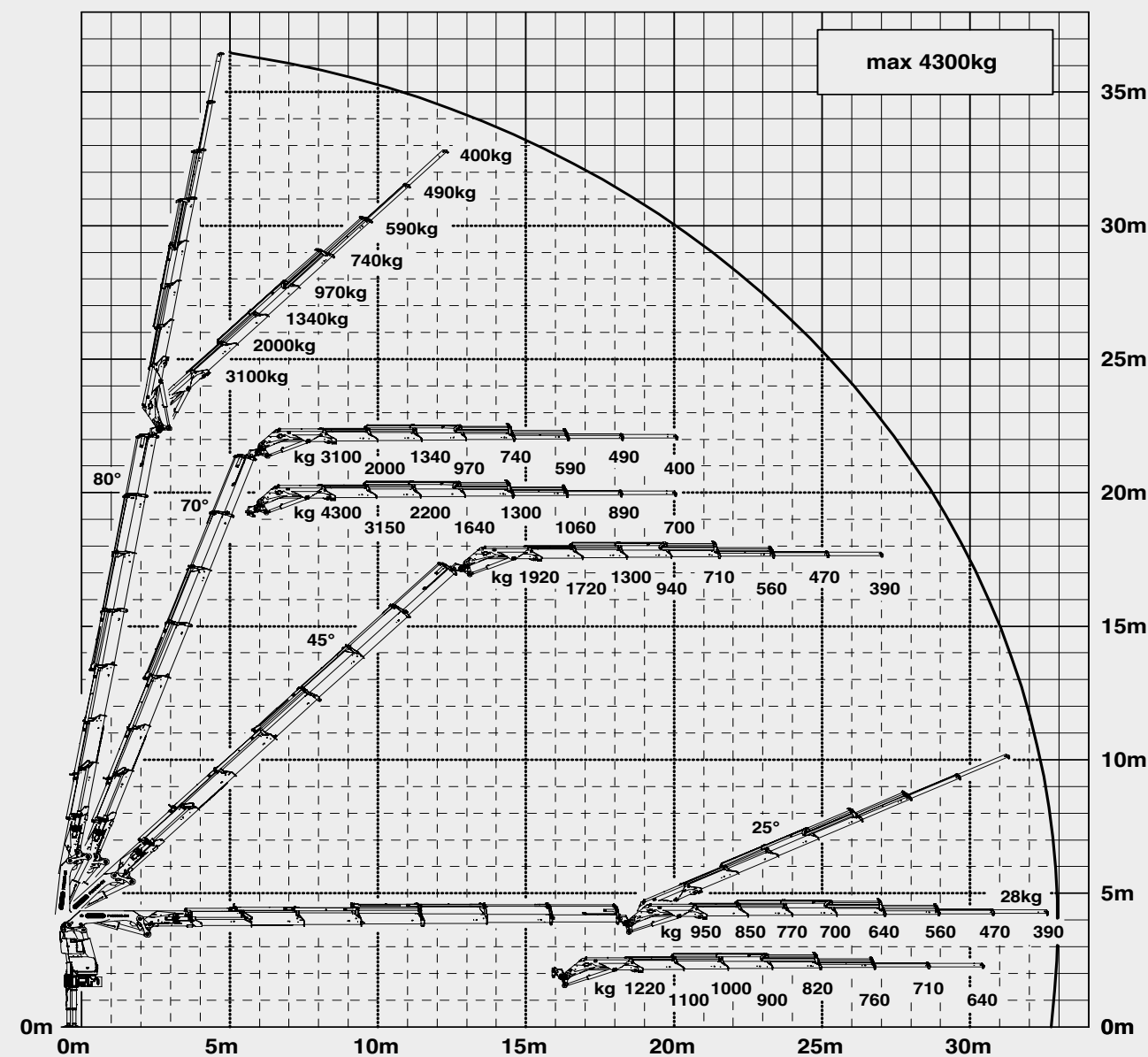
Width folded

Max. operating

Recommended

\_\_\_\_\_

Dead weight (std.)







LIFETIME EXCELLENCE

OVERVIEW

# PK 65002 SH

## HIGH PERFORMANCE



GENERAL	TECHNICAL DATA	APPLICATION	
---------	----------------	-------------	--



LIFETIME EXCELLENCE

# PK 65002 SH HIGH PERFORMANCE

## FEATURES



KTL

protected

Paltronic 150

controlled

RRC

Radio Remote Control

operated

HPSC

High Performance Stability Control

monitored

AOS

Active Oscillation Suppression

inside

DPS plus

Dual Power System

activated





LIFETIME EXCELLENCE

HOME

OVERVIEW

FEATURES

VIDEO

ABOUT US

# PK 65002 SH

## HIGH PERFORMANCE



LOW-MAINTENANCE EXTENSION SYSTEM +

+ S-HPLS

SOFT STOP +

+



**LOW-MAINTENANCE EXTENSION SYSTEM**  
REDUCES SERVICE TIME

With sliding elements made of synthetic material and the high-quality KTL coating, this boom system significantly simplifies service performed by the operator. This saves time and money – and protects the environment.

KTLPALFINGER

protected

Paltronic 150

controlled

RRC

Radio Remote Control operated

HPSC

High Performance Stability Control monitored

AOS

Active Oscillation Suppression inside

DPS plus

Dual Power System activated





LIFETIME EXCELLENCE

HOME

OVERVIEW

FEATURES

VIDEO

ABOUT US

# PK 65002 SH

## HIGH PERFORMANCE



LOW-MAINTENANCE EXTENSION SYSTEM +

+ S-HPLS

SOFT STOP +

+



**POWER LINK PLUS**  
HIGH VARIETY OF USES

With the 15-degree reverse linkage system, you can reach through low door openings and also work inside buildings. Heavy crane work – even in difficult conditions.

KTL

protected

Paltronic 150

controlled

RRC

Radio Remote Control

operated

HPSC

High Performance Stability Control

monitored

AOS

Active Oscillation Suppression

inside

DPS plus

Dual Power System

activated







LIFETIME EXCELLENCE

HOME

OVERVIEW

FEATURES

VIDEO

ABOUT US

# PK 65002 SH

## HIGH PERFORMANCE



LOW-MAINTENANCE EXTENSION SYSTEM +

+ S-HPLS

SOFT STOP +

+



**CONTINUOUS SLEWING SYSTEM**  
UNRESTRICTED MOVEMENT

More efficient in operation due to faster loading cycles, since the crane can be slewed over a shorter distance. The crane works more efficiently and faster.

KTLPALFINGER

protected

Paltronic 150

controlled

RRC

Radio Remote Control operated

HPSC

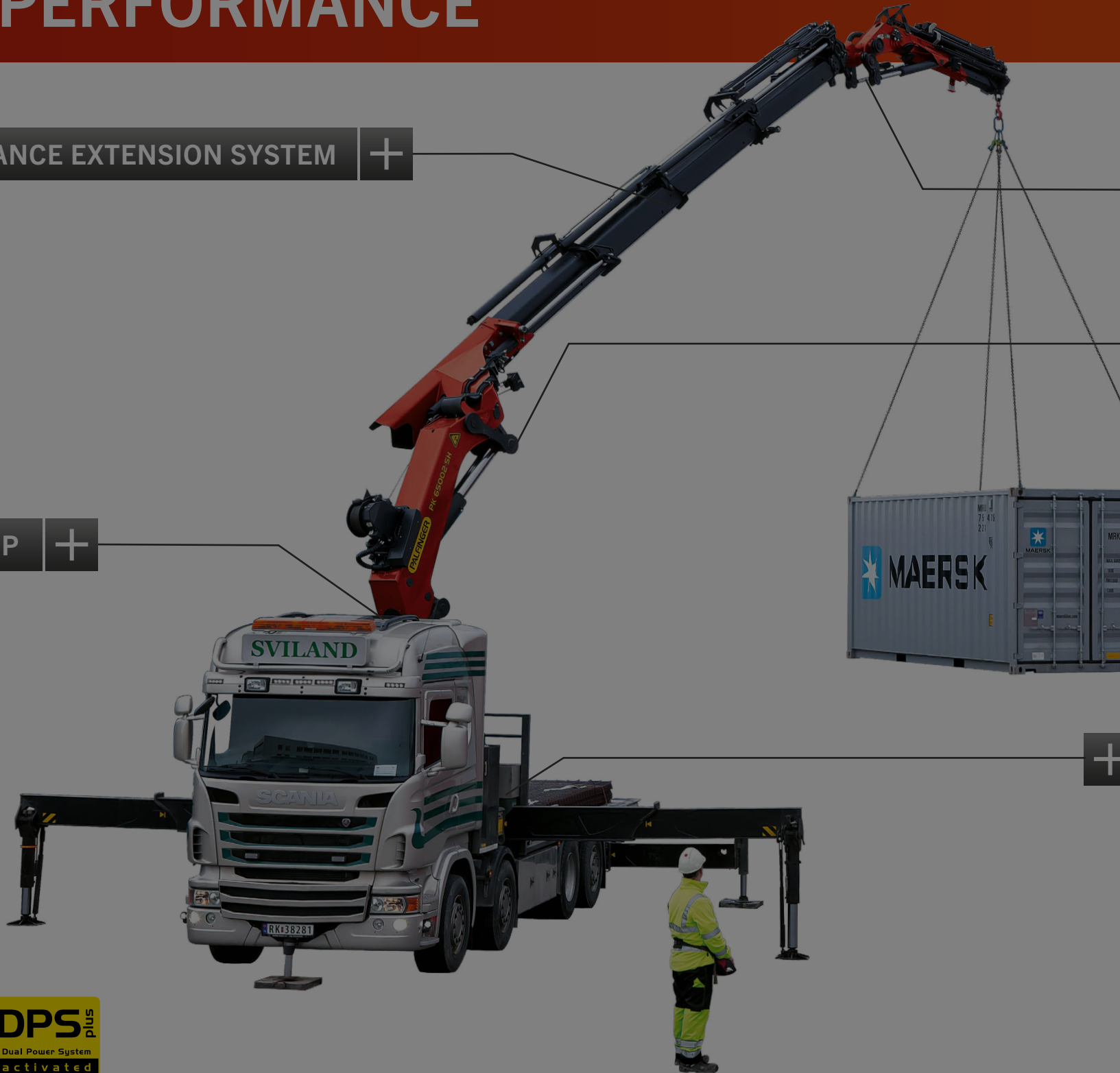
High Performance Stability Control monitored

AOS

Active Oscillation Suppression inside

DPS plus

Dual Power System activated





LIFETIME EXCELLENCE

HOME

OVERVIEW

FEATURES

VIDEO

ABOUT US

# PK 65002 SH

## HIGH PERFORMANCE



LOW-MAINTENANCE EXTENSION SYSTEM +

+ S-HPLS

SOFT STOP +

+



### SOFT STOP FUNCTION

MORE COMFORT AND SAFETY

The Soft Stop function is an electronic limit position damper. It causes gentle braking of all crane movements before the limit position is reached. Hence, jerky movements and load impacts can be avoided. The crane can be operated more gently and precisely.

KTLPALFINGER

protected

Paltronic 150

controlled

RRC

Radio Remote Control operated

HPSC

High Performance Stability Control monitored

AOS

Active Oscillation Suppression inside

DPS plus

Dual Power System activated







LIFETIME EXCELLENCE

HOME

OVERVIEW

FEATURES

VIDEO

ABOUT US

# PK 65002 SH

## HIGH PERFORMANCE

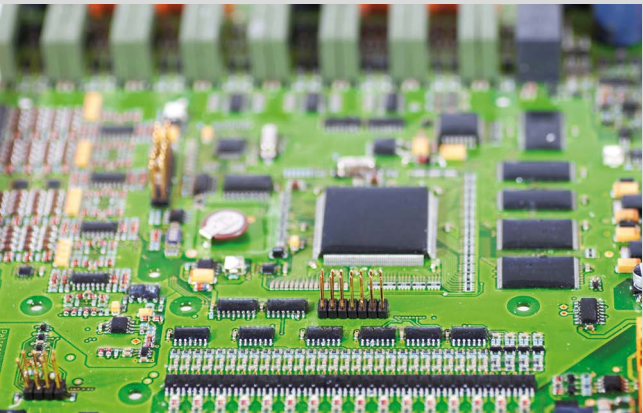
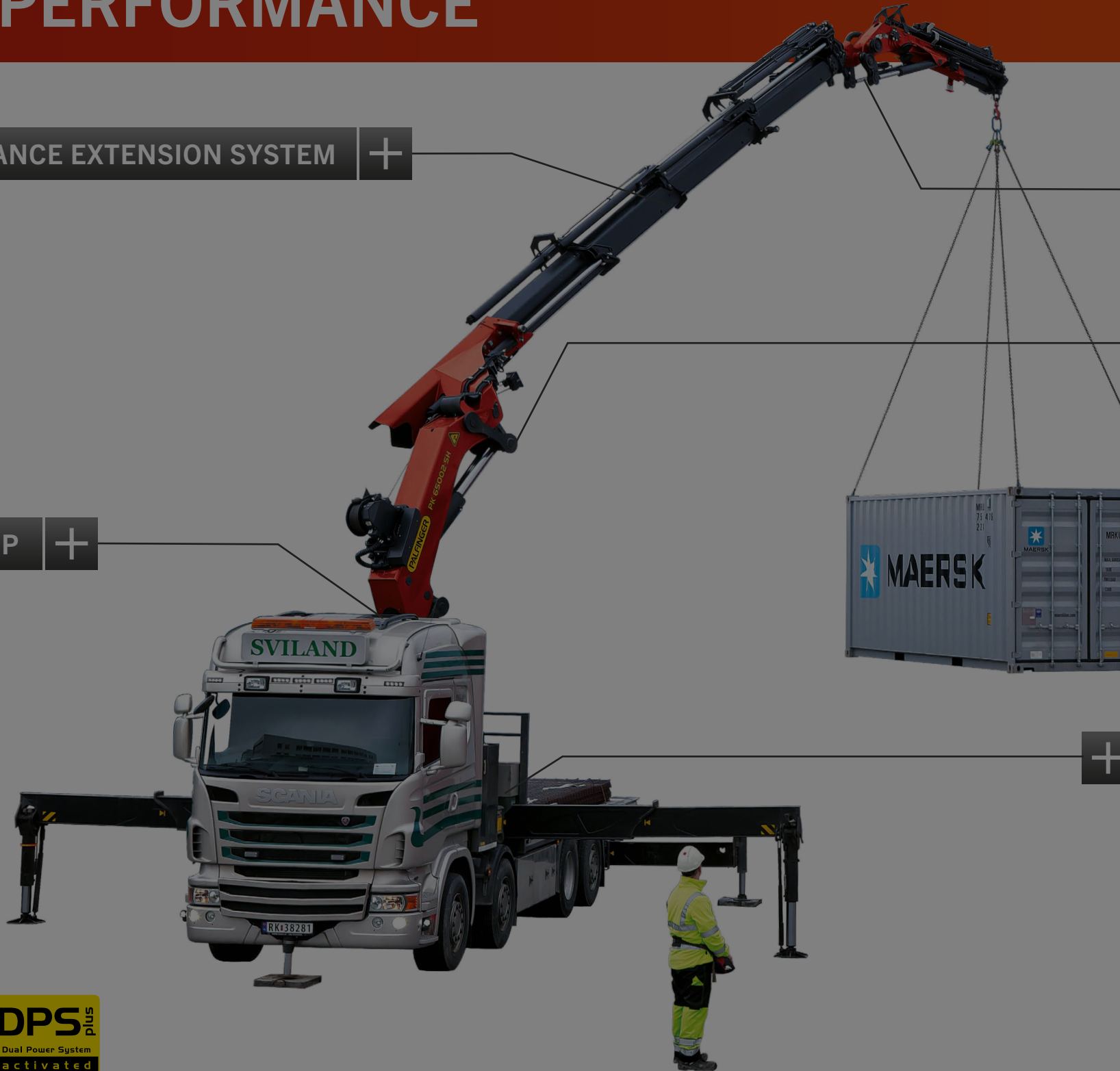


LOW-MAINTENANCE EXTENSION SYSTEM +

+ S-HPLS

SOFT STOP +

+



**S-HPLS**  
MORE LIFTING POWER WHEN IT IS REALLY NEEDED

S-HPLS is one of the most important functions of the PALTRONIC 150. It is a fully automatic system for increasing the lifting power. Depending on the need, there is continuous adaptation of the lifting power and speed of the crane.

KTLPALTRONIC 150RRC

protectedcontrolledoperated

HPSCAOSDPS plus

High Performance Stability ControlActive Oscillation SuppressionDual Power System

monitoredinsideactivated



LIFETIME EXCELLENCE

# PK 65002 SH HIGH PERFORMANCE



ABOUT US

TO US, “LIFETIME EXCELLENCE”  
MEANS SEEING TOP PERFORMANCE  
AS A MINIMUM REQUIREMENT.

LIFETIME EXCELLENCE is our promise. Our core message.  
Our brand essence. To our customers, it means top performance  
without compromise. The most cost-effective, reliable and innovative  
lifting solutions in a global network of expert service partners  
– for the entire product lifetime.

EXCELLENCE  
ECONOMY &  
EFFICIENCY

PERFORMANCE

EXCELLENCE  
INNOVATION &  
FLEXIBILITY

SERVICE

EXCELLENCE  
SERVICE &  
LOCATIONS

SUPPORT

EXPERTISE

PLAY VIDEO