

# PK 23002 SH

**PALFINGER**

LIFETIME EXCELLENCE

CONSTRUCTION SITES THAT ARE DIFFICULT TO ACCESS AND TIGHT SCHEDULES. THIS IS WHERE **POWER LINK PLUS** AND THE **CONTINUOUS SLEWING SYSTEM** REALLY DELIVER.



# LIFETIME EXCELLENCE

**PALFINGER LOADER CRANES ARE CONVINCING DUE TO THEIR SUPERIOR LIFE-CYCLE PERFORMANCE. THEY ARE THE MOST ECONOMICAL AND ALSO THE MOST RELIABLE OVER THE ENTIRE PRODUCT LIFE. FROM SOLUTION FINDING TO RESALE.**

BETTER  
SOLUTIONS

BETTER  
EFFICIENCY

BETTER  
ERGONOMICS

HIGHER VALUE  
RETENTION



HIGHER  
AVAILABILITY

HIGHER  
SERVICEABILITY

BETTER  
ECOLOGY

MORE  
RELIABILITY







# POWERFUL FUNCTIONS AND TECHNOLOGY





- High value retention due to KTL coating
- More comfort and safety due to Soft Stop
- Maximum utilisation of the working range due to HPSC
- More lifting power due to S-HPLS
- More efficient and faster due to continuous slewing



# PERFECT TOOL WITH SOPHISTICATED KINEMATICS

## 12 HIGHLIGHTS



**CONTINUOUS SLEWING SYSTEM**  
UNRESTRICTED MOVEMENT

More efficient in operation due to faster loading cycles, since the crane can be slewed over a shorter distance. The crane works more efficiently and faster.



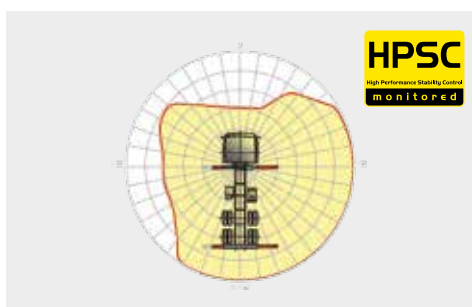
**POWER LINK PLUS**  
HIGH VARIETY OF USES

With the 15-degree reverse linkage system, you can reach through low door openings and also work inside buildings. Heavy crane work – even in difficult conditions.



**LOW-MAINTENANCE EXTENSION SYSTEM**  
REDUCES SERVICE TIME

With sliding elements made of synthetic material and the high-quality KTL coating, this boom system significantly simplifies service performed by the operator. This saves time and money – and protects the environment.



**HPSC**  
MAXIMUM UTILISATION OF THE WORKING RANGE

The variable stabiliser positioning of the High Performance Stability Control System makes it possible to utilise the lifting capacity to the maximum. It enables working within tight spaces.



**S-HPLS**  
MORE LIFTING POWER WHEN IT IS REALLY NEEDED

S-HPLS is one of the most important functions of the PALTRONIC 150. It is a fully automatic system for increasing the lifting power. Depending on the need, there is continuous adaptation of the lifting power and speed of the crane.



**CONTROL TECHNOLOGY**  
COMMUNICATION WITH THE OPERATOR

New standards in operator friendliness through perfect interaction between PALTRONIC 150, control valve and radio remote control. The operator is guided clearly and safely.





**POWER LINK CABLE WINCH**  
MORE COMFORT IN CABLE WINCH OPERATION

Characterised by low installation height, it is ideal for working inside buildings and transports with the crane boom unfolded. The Comfort Cable Routing reduces set-up times to a minimum.



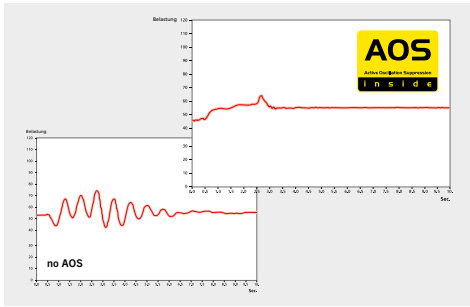
**FUNCTIONAL DESIGN**  
PRACTICAL AND ATTRACTIVE

Robust plastic covers protect crane parts against dirt and damage. Better appearance and increased operational comfort – during the entire lifetime.



**KTL – CATHODIC DIP PAINTING**  
FOR RETAINING HIGH VALUE

The UV-resistant coating guarantees long-term surface protection. Perfect appearance during the entire lifetime for maximum resale value.



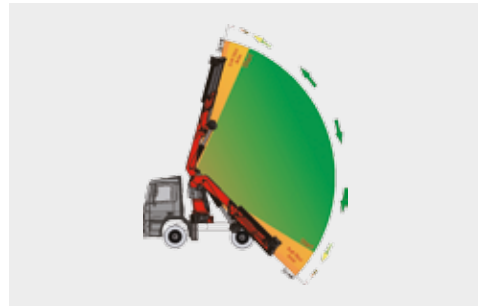
**AOS**  
MAXIMUM PRECISION AND SAFETY

The active oscillation suppression system prevents "post-oscillation" in the event of rapid braking or load changes. The stress peaks on the extension boom system are reduced and material fatigue and wear are minimised. This increases the resale value.



**LIGHTING PACKAGE**  
MORE CRANE SAFETY PARTICULARLY AT DUSK AND DARK

LEDs which backlight the control panel make it easier to read off the crane functions and provide the crane operator with a quick overview of the entire panel during the working process. LED warning lights in the supporting cylinders mean greater safety for crane operator and passers-by.



**SOFT STOP FUNCTION**  
MORE COMFORT AND SAFETY

The Soft Stop function is an electronic limit position damper. It causes gentle braking of all crane movements before the limit position is reached. Hence, jerky movements and load impacts can be avoided. The crane can be operated more gently and precisely.

**KTL**  
protected

**Paltronic 150**  
controlled

**RRC**  
Radio Remote Control  
operated

**HPSC**  
High Performance Stability Control  
monitored

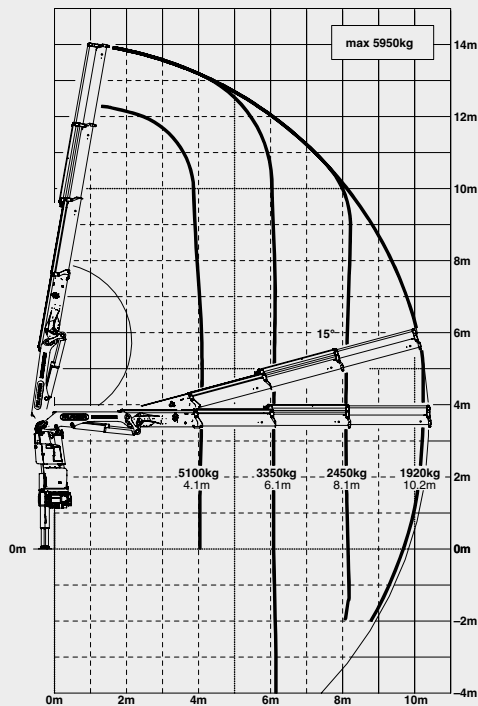
**AOS**  
Active Oscillation Suppression  
inside

\* Optional features / country-specific equipment

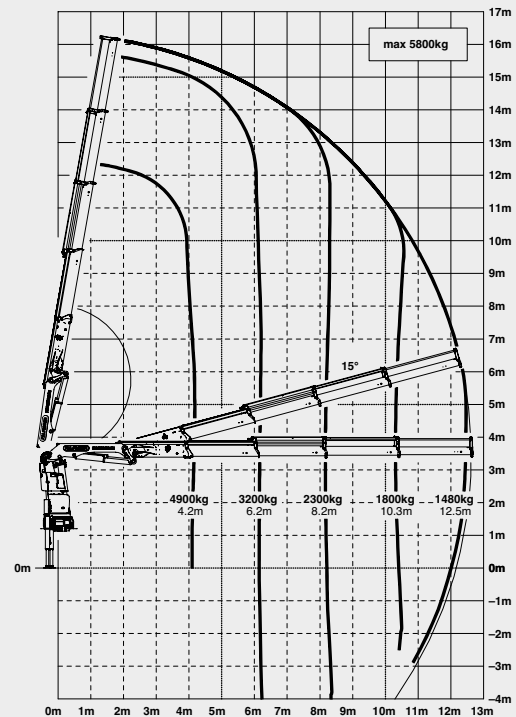
# PK 23002 SH

## HIGH PERFORMANCE

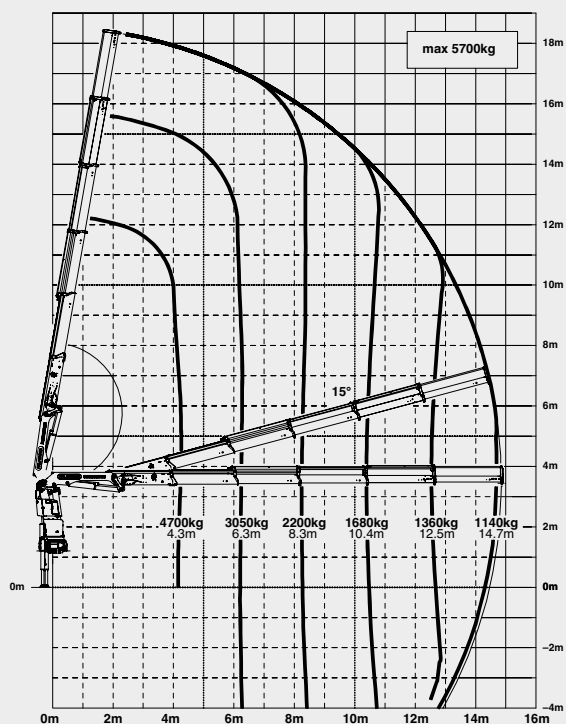
B



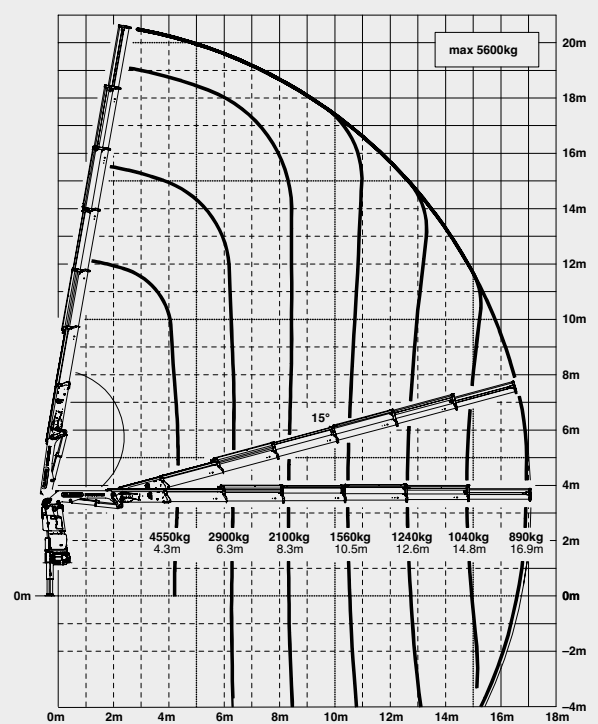
C



D



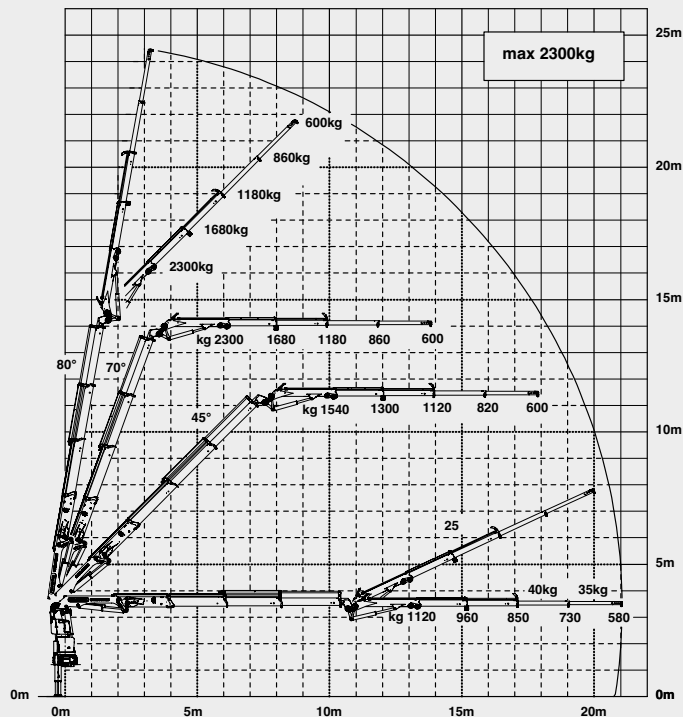
E



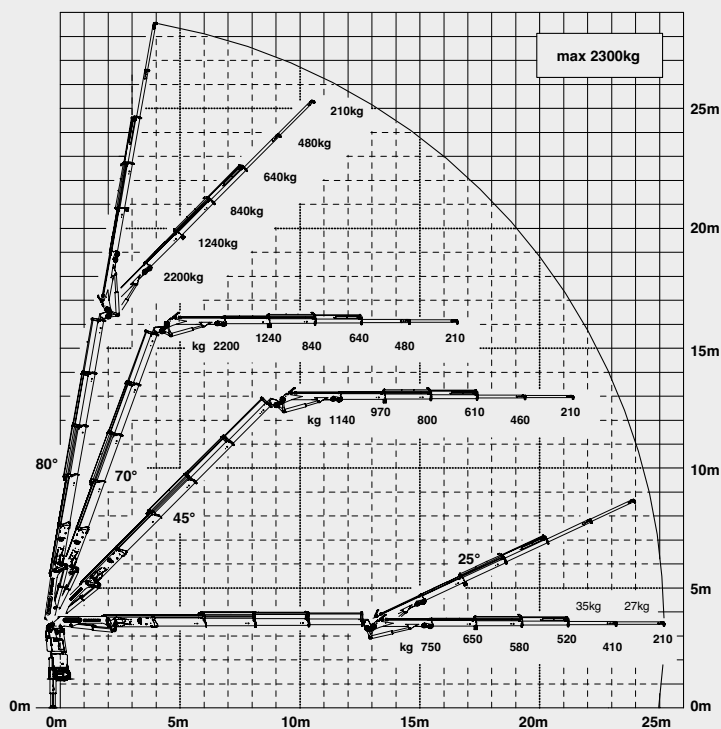


# MORE LIFTING POWER WHEN IT IS REALLY NEEDED

## B PJ060A JV2



## C PJ060B JV2



## LIFTING CAPACITIES

A	max.	6100 kg	13440 lbs
	4.0 m	13' 1"	5300 kg
	6.0 m	19' 8"	3500 kg
	8.0 m	26' 3"	4000 kg

B	max.	5950 kg	13100 lbs
	4.1 m	13' 5"	5100 kg
	6.1 m	20' 0"	3350 kg
	8.1 m	26' 7"	2450 kg
	10.2 m	33' 6"	1920 kg
	12.5 m	41' 0"	1500 kg
	14.7 m*	48' 3"	1240 kg

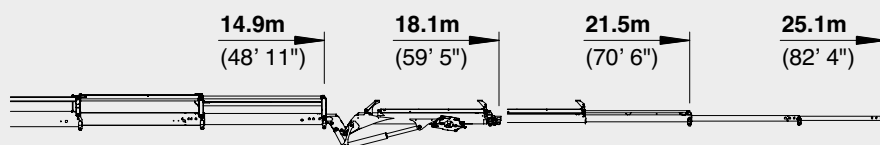
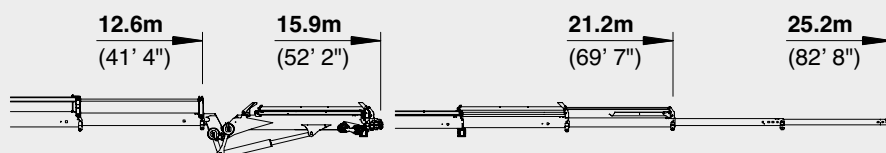
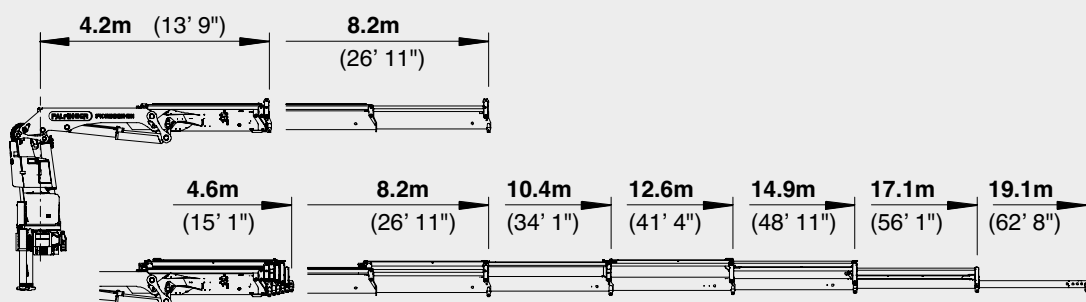
C	max.	5800 kg	12780 lbs
	4.2 m	13' 9"	4900 kg
	6.2 m	20' 4"	3200 kg
	8.2 m	26' 11"	2300 kg
	10.3 m	33' 10"	1800 kg
	12.5 m	41' 0"	1480 kg
	14.7 m*	48' 3"	1200 kg
	16.8 m*	55' 1"	1000 kg

D	max.	5700 kg	12560 lbs
	4.3 m	14' 1"	4700 kg
	6.3 m	20' 8"	3050 kg
	8.3 m	27' 3"	2200 kg
	10.4 m	34' 1"	1680 kg
	12.5 m	41' 0"	1360 kg
	14.7 m	48' 3"	1140 kg
	16.9 m*	55' 5"	950 kg
	18.9 m*	62' 0"	620 kg

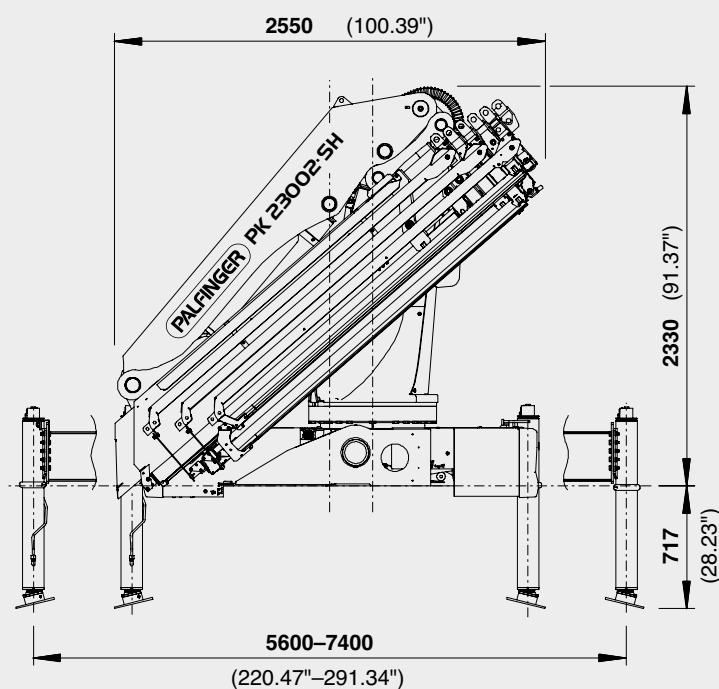
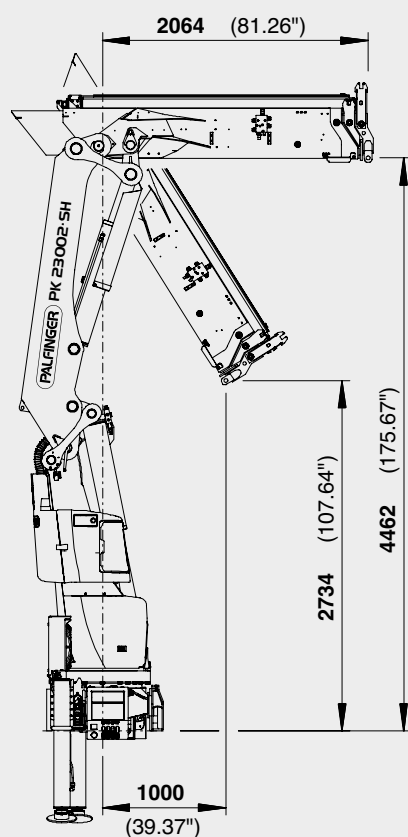
E	max.	5600 kg	12340 lbs
	4.3 m	14' 1"	4550 kg
	6.3 m	20' 8"	2900 kg
	8.3 m	27' 3"	2100 kg
	10.5 m	34' 5"	1560 kg
	12.6 m	41' 4"	1240 kg
	14.8 m	48' 7"	1040 kg
	16.9 m	55' 5"	890 kg
	18.9 m*	62' 0"	620 kg

# PERFECT DIMENSIONS

## EXTENSION BOOM VARIATIONS



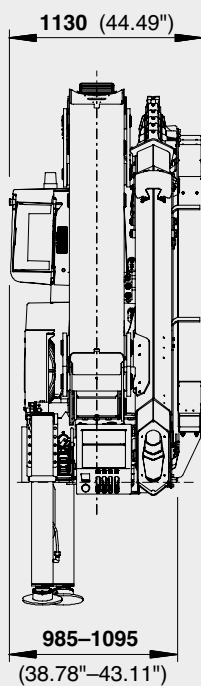
## DIMENSIONS



## PK 23002 SH

## C PJ060B JV2

## D PJ040A JV2



## TECHNICAL SPECIFICATIONS (EN 12999 HC1 HD5/B3)

Max. lifting moment	21.9 mt/215.0 kNm	158560 ft.lbs
Max. lifting capacity	6200 kg/60.8 kN	13670 lbs
Max. hydraulic outreach	17.1 m	56' 1"
Max. manual outreach	19.1 m	62' 8"
Max. outreach (with fly-jib)	25.2 m	82' 8"
Slewing angle	endless	
Slewing torque	2.3 mt/22.6 kNm	16640 ft.lbs
Stabiliser spread	std. 5.6 m/18' 4"	max. 7.4 m/24' 3"
Fitting space required (std.)	0.99 m	3' 3"
Width folded	2.55 m	8' 4"
Max. operating pressure	365 bar	5293 psi
Recommended pump capacity	from 75 l/min	19.8 US gal./min
	to 100 l/min	26.4 US gal./min
Dead weight (std.)	2549 kg	5620 lbs



