

# PK 24001 K

**PALFINGER**

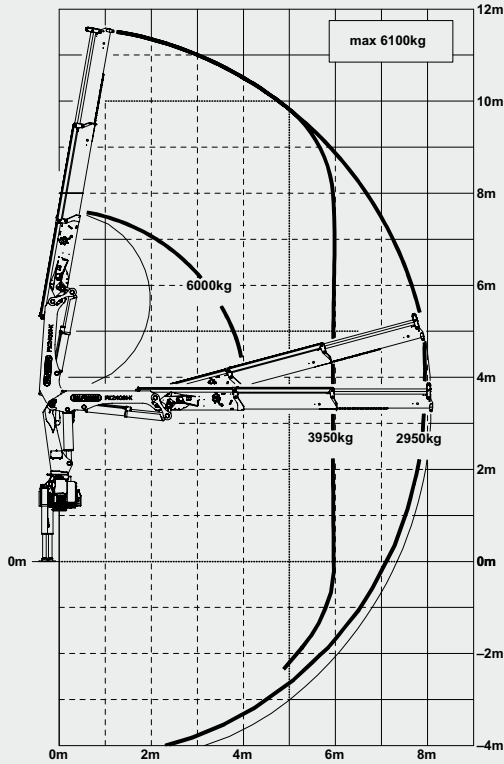
LIFETIME EXCELLENCE

## ITS HOOK HEIGHT AT CLOSE RANGE IS AN IMPORTANT CHARACTERISTIC FOR EFFICIENT LOAD HANDLING

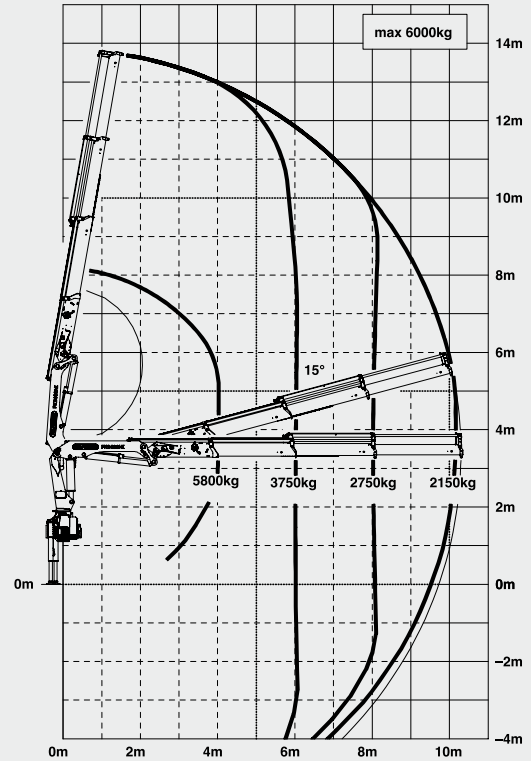


# PK 24001 K HIGH PERFORMANCE

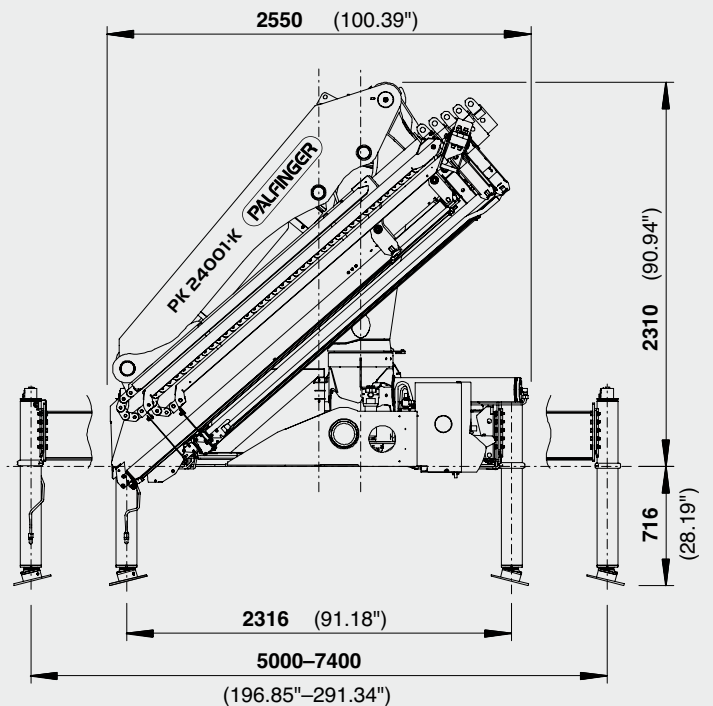
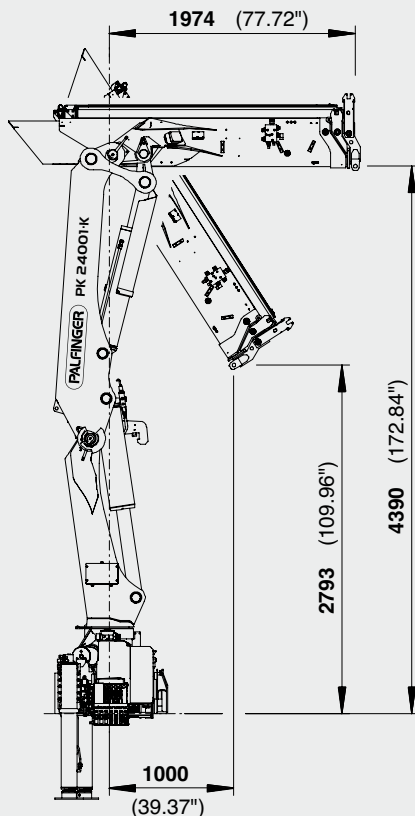
A



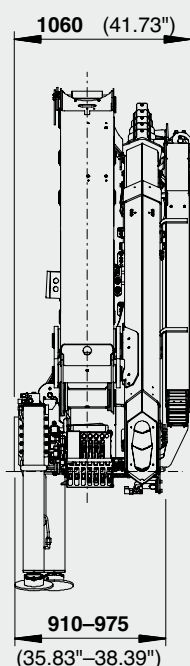
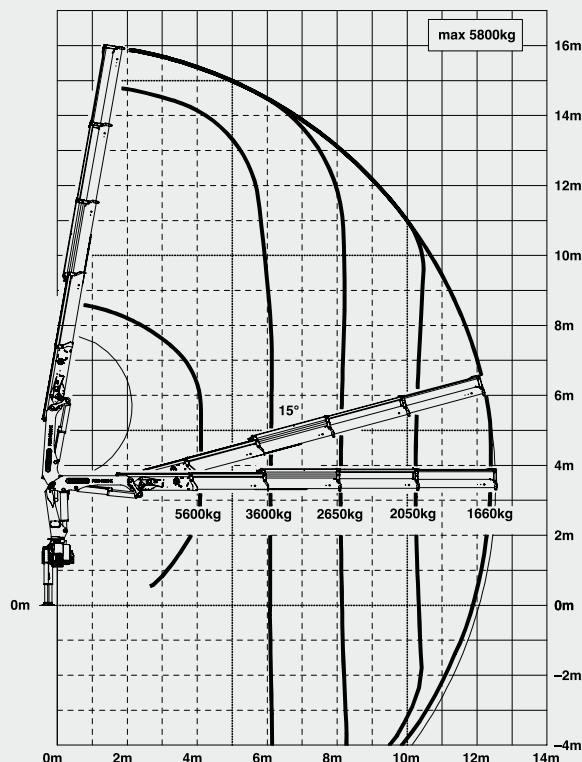
B



## DIMENSIONS



C



➤ High value retention due to KTL coating

➤ Additional applications due to Single Link Plus

➤ Maximum utilisation of the working range due to HPSC

➤ Higher payloads due to intelligent lightweight design

➤ Shorter load cycle times due to High Speed Extension



## TECHNICAL SPECIFICATIONS (EN 12999 HC1 HD4/B3)

Max. lifting moment	24.1 mt/236.0 kNm	174050 ft.lbs
Max. lifting capacity	6100 kg/59.8 kN	13500 lbs
Max. hydraulic outreach	12.5 m	41' 0"
Max. manual outreach	16.9 m	55' 5"
Slewing angle	400°	
Slewing torque	2.8 mt/27.5 kNm	20260 ft.lbs
Stabiliser spread (std./max.)	5.0 m/7.4 m	16' 5"/24' 3"
Fitting space required (std.)	0.91 m	2' 12"
Width folded	2.55 m	8' 4"
Max. operating pressure	320 bar	4640 psi
Recommended pump capacity	from 50 l/min to 75 l/min	13.2 US gal./min 19.8 US gal./min
Dead weight (std.)	2451 kg	5400 lbs



\* Optional features / country-specific equipment

# LIFETIME EXCELLENCE

**PALFINGER LOADER CRANES ARE CONVINCING DUE TO THEIR SUPERIOR LIFE-CYCLE PERFORMANCE. THEY ARE THE MOST ECONOMICAL AND ALSO THE MOST RELIABLE OVER THE ENTIRE PRODUCT LIFE. FROM SOLUTION FINDING TO RESALE.**

**BETTER  
SOLUTIONS**

**BETTER  
EFFICIENCY**

**BETTER  
ERGONOMICS**

**HIGHER VALUE  
RETENTION**



**HIGHER  
AVAILABILITY**

**HIGHER  
SERVICEABILITY**

**BETTER  
ECOLOGY**

**MORE  
RELIABILITY**

For further information please visit: [www.palfinger.com/thebrand](http://www.palfinger.com/thebrand)