

PK 27002 SH

PALFINGER

LIFETIME EXCELLENCE

FUNCTIONAL DESIGN. PROTECTION FOR SENSITIVE COMPONENTS ENHANCES APPEARANCE AND LONG-TERM VALUE RETENTION.



LIFETIME EXCELLENCE

PALFINGER LOADER CRANES ARE CONVINCING DUE TO THEIR SUPERIOR LIFE-CYCLE PERFORMANCE. THEY ARE THE MOST ECONOMICAL AND ALSO THE MOST RELIABLE OVER THE ENTIRE PRODUCT LIFE. FROM SOLUTION FINDING TO RESALE.

BETTER
SOLUTIONS

BETTER
EFFICIENCY

BETTER
ERGONOMICS

HIGHER VALUE
RETENTION



HIGHER
AVAILABILITY

HIGHER
SERVICEABILITY

BETTER
ECOLOGY

MORE
RELIABILITY



OPERATOR COMFORT REACHES NEW HEIGHTS





- More efficient and faster due to continuous slewing system
- Additional applications due to Power Link Plus
- Increased operating times due to low-maintenance extension system
- Higher payloads due to intelligent lightweight design
- More comfort and safety due to Soft Stop



PERFECT TOOL WITH SOPHISTICATED KINEMATICS

12 HIGHLIGHTS



CONTINUOUS SLEWING SYSTEM
UNRESTRICTED MOVEMENT

More efficient in operation due to faster loading cycles, since the crane can be slewed over a shorter distance. The crane works more efficiently and faster.



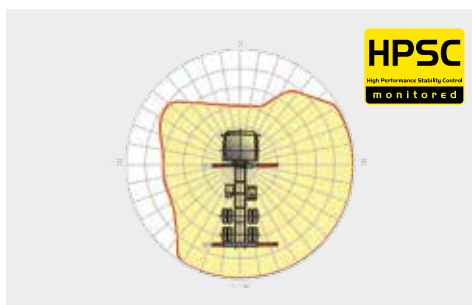
POWER LINK PLUS
HIGH VARIETY OF USES

With the 15-degree reverse linkage system, you can reach through low door openings and also work inside buildings. Heavy crane work – even in difficult conditions.



LOW-MAINTENANCE EXTENSION SYSTEM
REDUCES SERVICE TIME

With sliding elements made of synthetic material and the high-quality KTL coating, this boom system significantly simplifies service performed by the operator. This saves time and money – and protects the environment.



HPSC
MAXIMUM UTILISATION OF THE
WORKING RANGE

The variable stabiliser positioning of the High Performance Stability Control System makes it possible to utilise the lifting capacity to the maximum. It enables working within tight spaces.



S-HPLS
MORE LIFTING POWER WHEN IT IS REALLY
NEEDED

S-HPLS is one of the most important functions of the PALTRONIC 150. It is a fully automatic system for increasing the lifting power. Depending on the need, there is continuous adaptation of the lifting power and speed of the crane.



CONTROL TECHNOLOGY
COMMUNICATION WITH THE OPERATOR

New standards in operator friendliness through perfect interaction between PALTRONIC 150, control valve and radio remote control. The operator is guided clearly and safely.



POWER LINK CABLE WINCH
MORE COMFORT IN CABLE WINCH OPERATION

Characterised by low installation height, it is ideal for working inside buildings and transports with the crane boom unfolded. The Comfort Cable Routing reduces set-up times to a minimum.



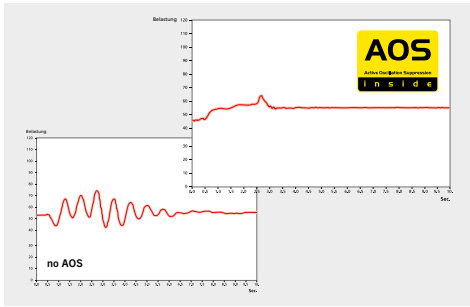
FUNCTIONAL DESIGN
PRACTICAL AND ATTRACTIVE

Robust plastic covers protect crane parts against dirt and damage. Better appearance and increased operational comfort – during the entire lifetime.



KTL – CATHODIC DIP PAINTING
FOR RETAINING HIGH VALUE

The UV-resistant coating guarantees long-term surface protection. Perfect appearance during the entire lifetime for maximum resale value.



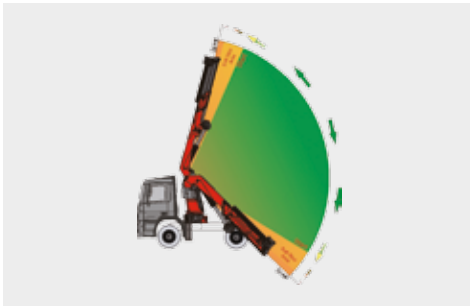
AOS
MAXIMUM PRECISION AND SAFETY

The active oscillation suppression system prevents "post-oscillation" in the event of rapid braking or load changes. The stress peaks on the extension boom system are reduced and material fatigue and wear are minimised. This increases the resale value.



DPS PLUS
MORE EFFICIENT FLY-JIB OPERATION

The Dual Power System allows multiple uses of the crane both for large outreaches as well as for heavy load operation.



SOFT STOP FUNCTION
MORE COMFORT AND SAFETY

The Soft Stop function is an electronic limit position damper. It causes gentle braking of all crane movements before the limit position is reached. Hence, jerky movements and load impacts can be avoided. The crane can be operated more gently and precisely.

KTL
protected

Paltronic 150
controlled

RRC
Radio Remote Control
operated

HPSC
High Performance Stability Control
monitored

AOS
Active Oscillation Suppression
inside

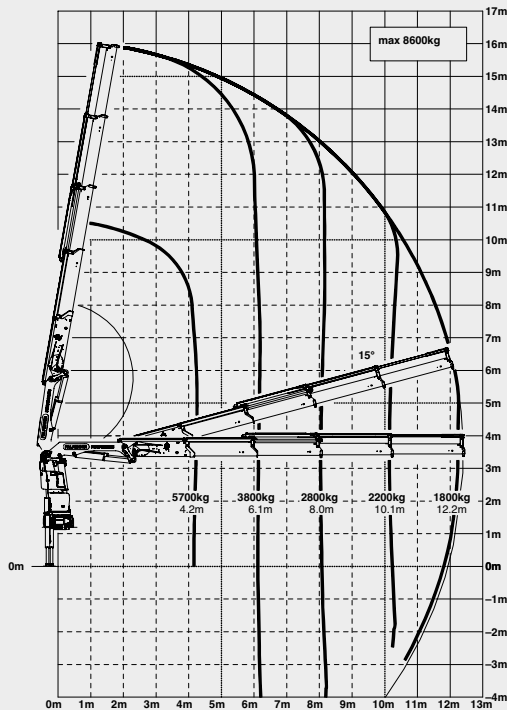
DPS plus
Dual Power System
activated

* Optional features / country-specific equipment

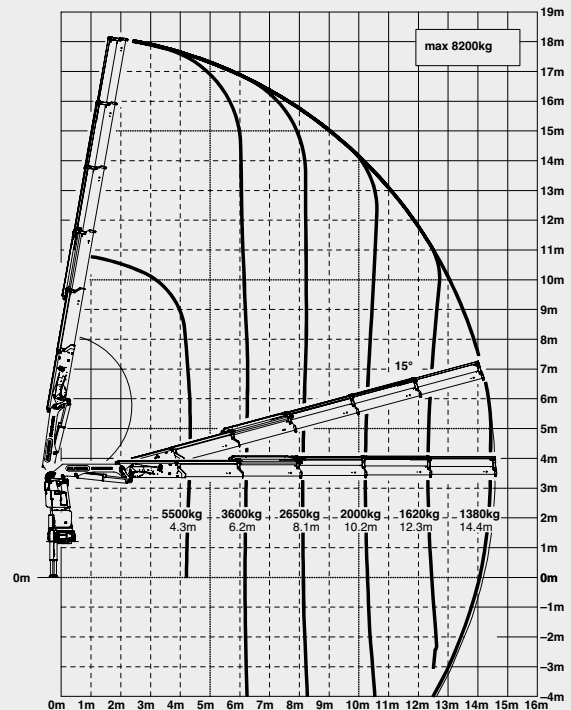
PK 27002 SH

HIGH PERFORMANCE

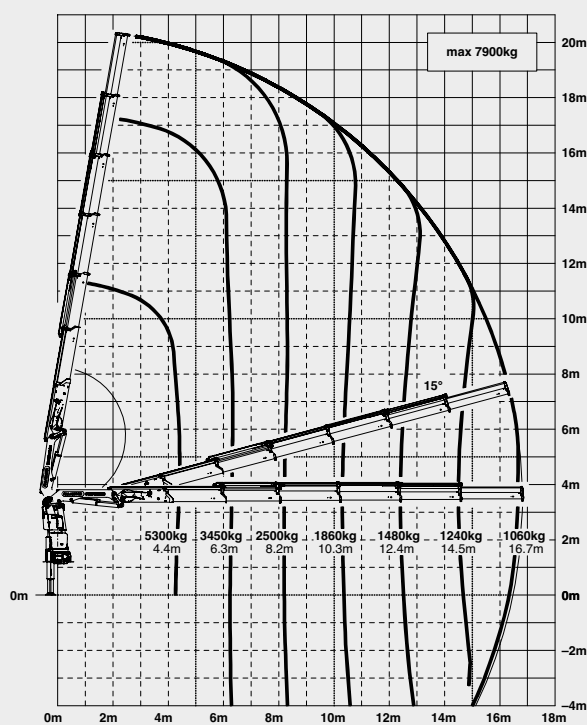
C



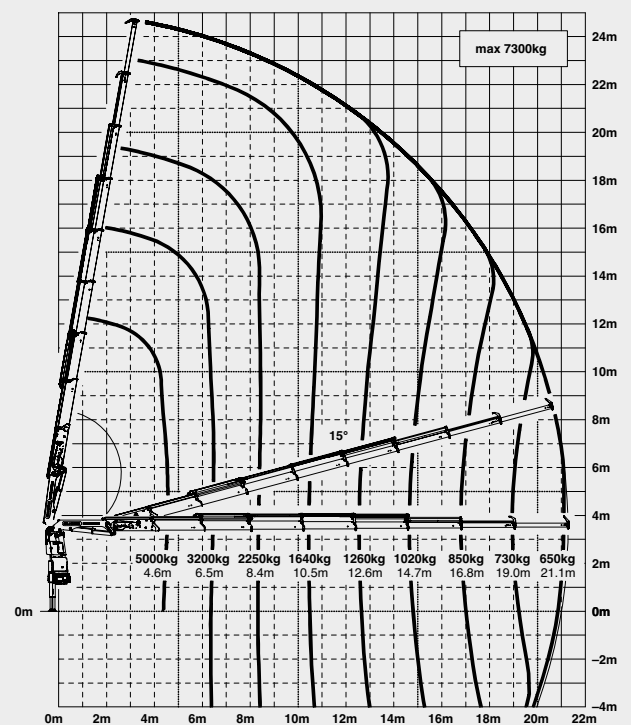
D



E

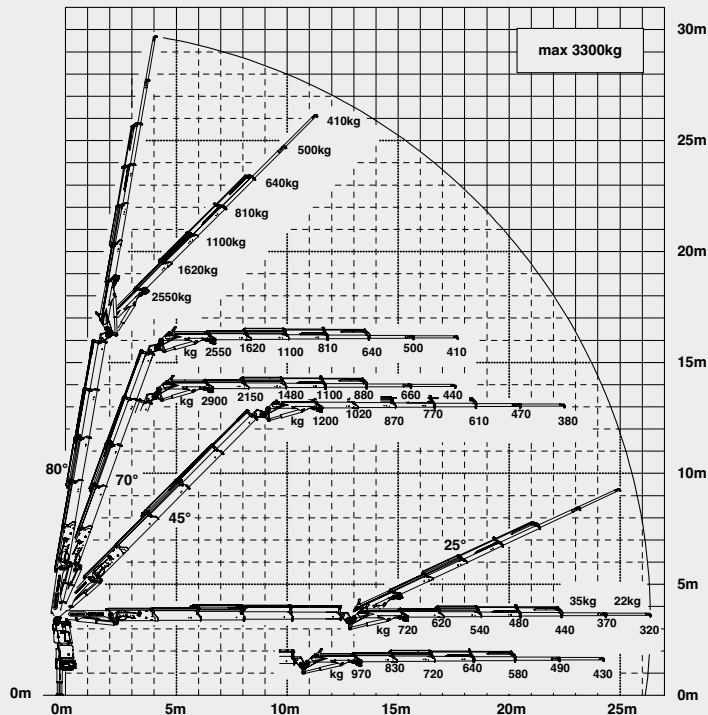


G

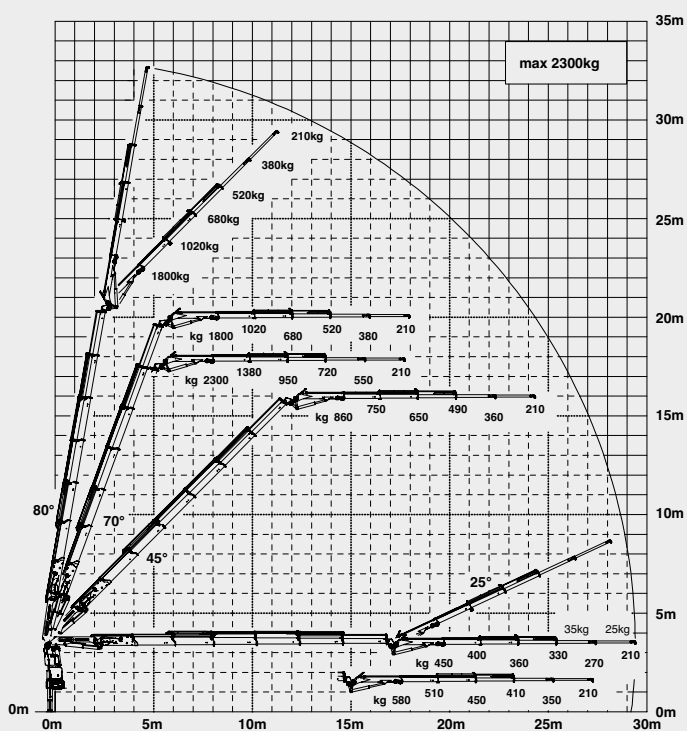


MORE LIFTING POWER WHEN IT IS REALLY NEEDED

C PJ080C JV2 DPS PLUS



E PJ060B JV2 DPS PLUS



LIFTING POWER

A	max.	9300 kg	20500 lbs
	4.1 m	13' 5"	6200 kg
	6.0 m	19' 8"	4200 kg
	7.9 m	25' 11"	3200 kg

B	max.	8900 kg	19600 lbs
	4.2 m	13' 9"	6000 kg
	6.1 m	20' 0"	4000 kg
	8.0 m	26' 3"	3000 kg
	10.1 m	33' 2"	2350 kg

C	max.	8600 kg	18950 lbs
	4.2 m	13' 9"	5700 kg
	6.1 m	20' 0"	3800 kg
	8.0 m	26' 3"	2800 kg
	10.1 m	33' 2"	2200 kg
	12.2 m	40' 0"	1800 kg
	14.4 m*	47' 3"	1460 kg
	16.6 m*	54' 6"	1180 kg

D	max.	8200 kg	18070 lbs
	4.3 m	14' 1"	5500 kg
	6.2 m	20' 4"	3600 kg
	8.1 m	26' 7"	2650 kg
	10.2 m	33' 6"	2000 kg
	12.3 m	40' 4"	1620 kg
	14.4 m	47' 3"	1380 kg
	16.7 m*	54' 9"	1120 kg
	18.8 m*	61' 8"	930 kg

E	max.	7900 kg	17400 lbs
	4.4 m	14' 5"	5300 kg
	6.3 m	20' 8"	3450 kg
	8.2 m	26' 11"	2500 kg
	10.3 m	33' 10"	1860 kg
	12.4 m	40' 8"	1480 kg
	14.5 m	47' 7"	1240 kg
	16.7 m	54' 9"	1060 kg
	18.8 m*	61' 8"	880 kg
	21.0 m*	68' 11"	740 kg

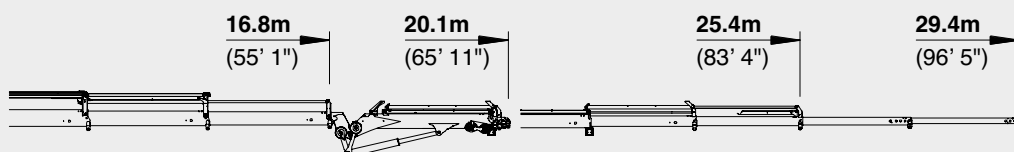
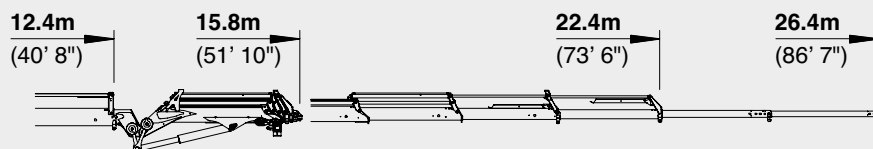
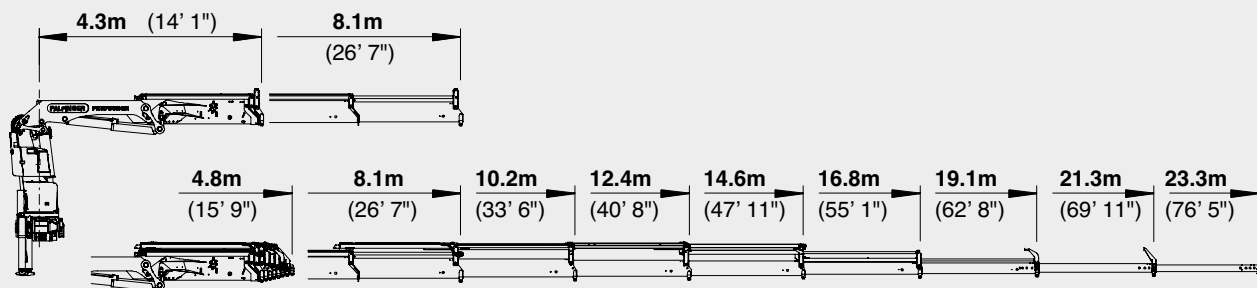
F	max.	7600 kg	16750 lbs
	4.5 m	14' 9"	5100 kg
	6.4 m	20' 12"	3300 kg
	8.3 m	27' 3"	2350 kg
	10.4 m	34' 1"	1760 kg
	12.5 m	41' 0"	1380 kg
	14.6 m	47' 11"	1120 kg
	16.7 m	54' 9"	950 kg
	18.9 m	62' 0"	830 kg
	21.1 m	69' 3"	700 kg
	23.1 m	75' 9"	570 kg

G	max.	7300 kg	16090 lbs
	4.6 m	15' 1"	4900 kg
	6.5 m	21' 4"	3200 kg
	8.4 m	27' 7"	2250 kg
	10.5 m	34' 5"	1640 kg
	12.6 m	41' 4"	1260 kg
	14.7 m	48' 3"	1020 kg
	16.8 m	55' 1"	850 kg
	19.0 m	62' 4"	730 kg
	21.1 m	69' 3"	650 kg
	23.1 m*	75' 9"	560 kg

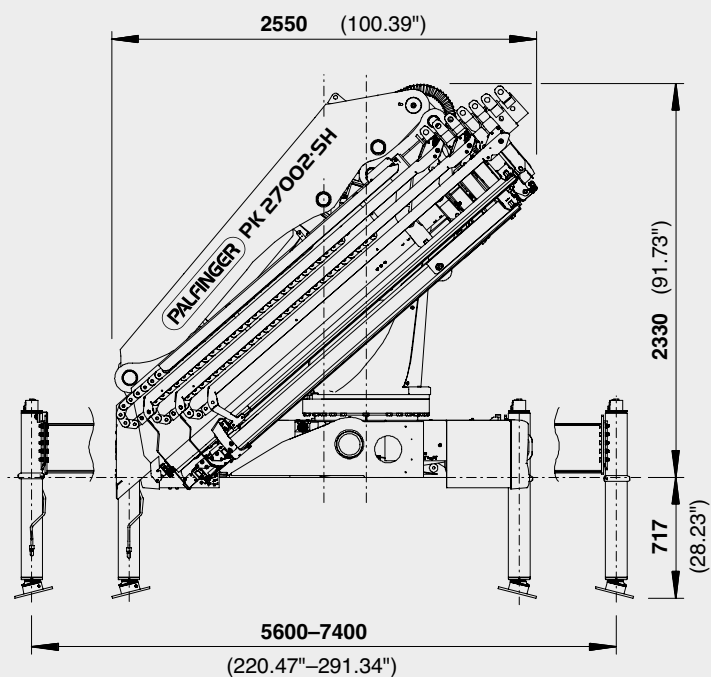
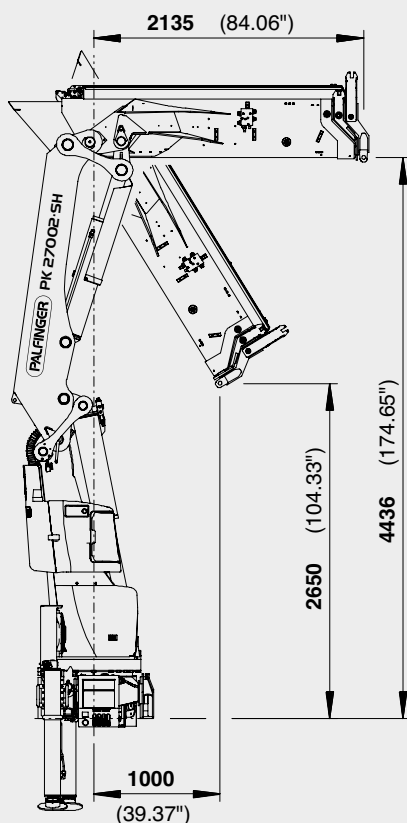
*mechanical extension

PERFECT DIMENSIONS

EXTENSION BOOM VARIATIONS



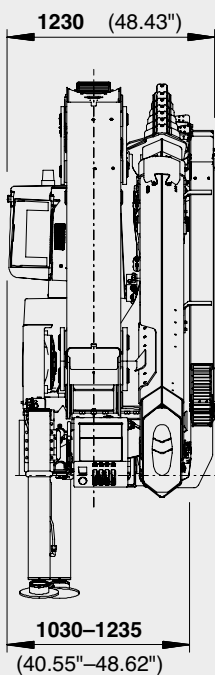
DIMENSIONS



PK 27002 SH

C PJ080C JV2

E PJ060B JV2



TECHNICAL SPECIFICATIONS (EN 12999 HC1 HD5/B3)

Max. lifting moment	26.0 mt/255.0 kNm	188060 ft.lbs
Max. lifting capacity	9300 kg/91.2 kN	20500 lbs
Max. hydraulic outreach	21.3 m	69' 11"
Max. manual outreach	23.3 m	76' 5"
Max. outreach (with fly-jib)	29.4 m	96' 5"
Slewing angle	endless	
Slewing torque with 1 gear	2.8 mt/27.5 kNm	20260 ft. lbs
Slewing torque with 2 gears	3.4 mt/33.4 kNm	24600 ft. lbs
Stabiliser spread	std. 5.6 m/18' 4"	max 7.4 m/24' 3"
Fitting space required (std.)	1.01 m	3' 4"
Width folded	2.55 m	8' 4"
Max. operating pressure	365 bar	523 psi
Recommended pump capacity	from 80 l/min	21.1 US gal./min
	to 110 l/min	29.1 US gal./min
Dead weight (std.)	2679 kg	5910 lbs

