

# PK 40002 EH

**PALFINGER**

LIFETIME EXCELLENCE

## THE POWER LINK ROPE WINCH AND FUNCTIONAL DESIGN OFFER MORE COM- FORT AND OPERATOR FRIENDLINESS



# LIFETIME EXCELLENCE

**PALFINGER LOADER CRANES ARE CONVINCING DUE TO THEIR SUPERIOR LIFE-CYCLE PERFORMANCE. THEY ARE THE MOST ECONOMICAL AND ALSO THE MOST RELIABLE OVER THE ENTIRE PRODUCT LIFE. FROM SOLUTION FINDING TO RESALE.**

BETTER  
SOLUTIONS

BETTER  
EFFICIENCY

BETTER  
ERGONOMICS

HIGHER VALUE  
RETENTION



HIGHER  
AVAILABILITY

HIGHER  
SERVICEABILITY

BETTER  
ECOLOGY

MORE  
RELIABILITY





# NEW CONTEMPORARY DESIGN







- More efficiency with fly jib thanks to DPS Plus
- Perfect appearance and the highest value retention due to KTL
- Additional applications thanks to Power Link Plus
- More lifting power due to E-HPLS
- Increased operating times due to low-maintenance extension system



# FIRST-RATE IN DESIGN AND PERFORMANCE

## 12 HIGHLIGHTS



**CONTINUOUS SLEWING SYSTEM**  
UNRESTRICTED MOVEMENT

More efficient in operation due to faster loading cycles, since the crane can be slewed over a shorter distance. The crane works more efficiently and faster.



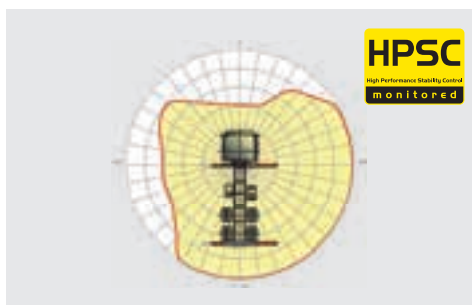
**POWER LINK PLUS**  
HIGH VARIETY OF USES

With the 15-degree reverse linkage system, you can reach through low door openings and also work inside buildings. Heavy crane work – even in difficult conditions.



**LOW-MAINTENANCE EXTENSION SYSTEM**  
REDUCES SERVICE TIME

With sliding elements made of synthetic material and the high-quality KTL coating, this boom system significantly simplifies service performed by the operator. This saves time and money – and protects the environment.



**HPSC**  
MAXIMUM UTILISATION OF THE WORKING RANGE

The variable stabiliser positioning of the High Performance Stability Control System makes it possible to utilise the lifting capacity to the maximum. It enables working within tight spaces.



**HIGH SPEED EXTENSION**  
FOR EFFICIENT ASSIGNMENTS

The High Speed Extension speeds up the extension boom system. Crane works faster and more efficiently.



**RADIO REMOTE CONTROL**  
DIALOGUE WITH THE OPERATOR

PALFINGER radio remote controls are equipped with linear lever or cross lever and provide the greatest possible comfort for the operator. All EH models with LED-Display inform the crane operator about the different operating conditions.



**POWER LINK CABLE WINCH**  
MORE COMFORT IN CABLE WINCH OPERATION

Characterised by low installation height, it is ideal for working inside buildings and transports with the crane boom unfolded. The Comfort Cable Routing reduces set-up times to a minimum.



**FUNCTIONAL DESIGN**  
PRACTICAL AND ATTRACTIVE

Robust plastic covers protect crane parts against dirt and damage. Better appearance and increased operational comfort – during the entire lifetime.



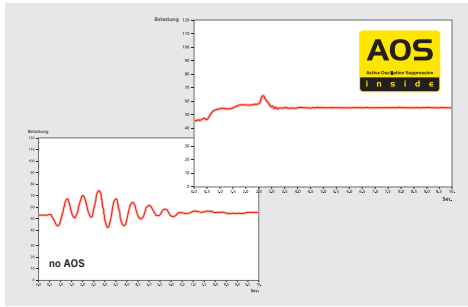
**KTL – CATHODIC DIP PAINTING**  
FOR RETAINING HIGH VALUE

The UV-resistant coating guarantees long-term surface protection. Perfect appearance during the entire lifetime for maximum resale value.



**HOSE EQUIPMENT FOR ATTACHMENTS**  
VERSATILE AND USER-FRIENDLY

The hose equipment offers an easy means of connecting auxiliary equipment. The hose equipment is guided in hose trays for protection.



**AOS**  
MAXIMUM PRECISION AND SAFETY

The active oscillation suppression system prevents "post-oscillation" in the event of rapid braking or load changes. The stress peaks on the extension boom system are reduced and material fatigue and wear are minimised. This increases the resale value.



**DPS PLUS**  
MORE EFFICIENT FLY-JIB OPERATION

The Dual Power System allows multiple uses of the crane both for large outreaches as well as for heavy load operation.

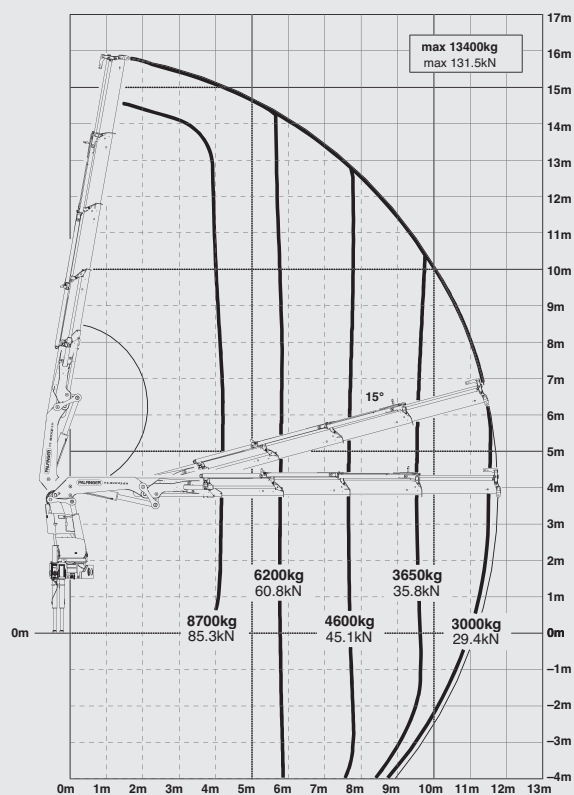


\* Optional features / country-specific equipment

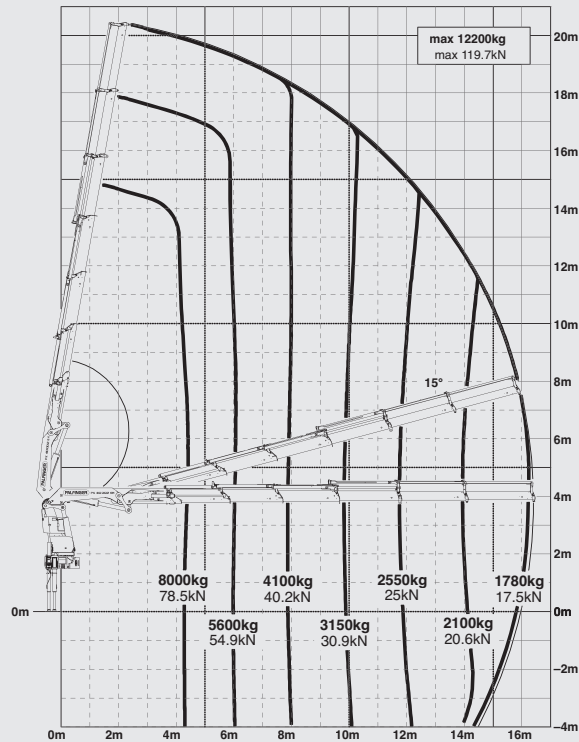
# PK 40002

## HIGH PERFORMANCE

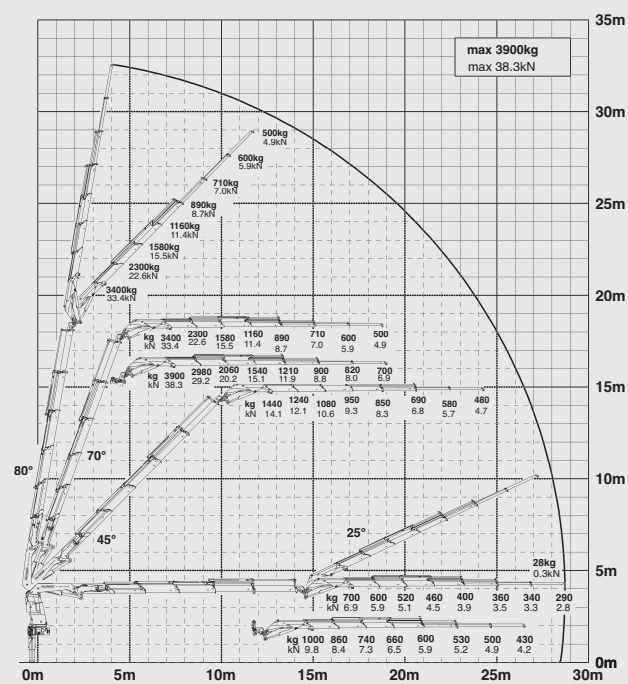
C



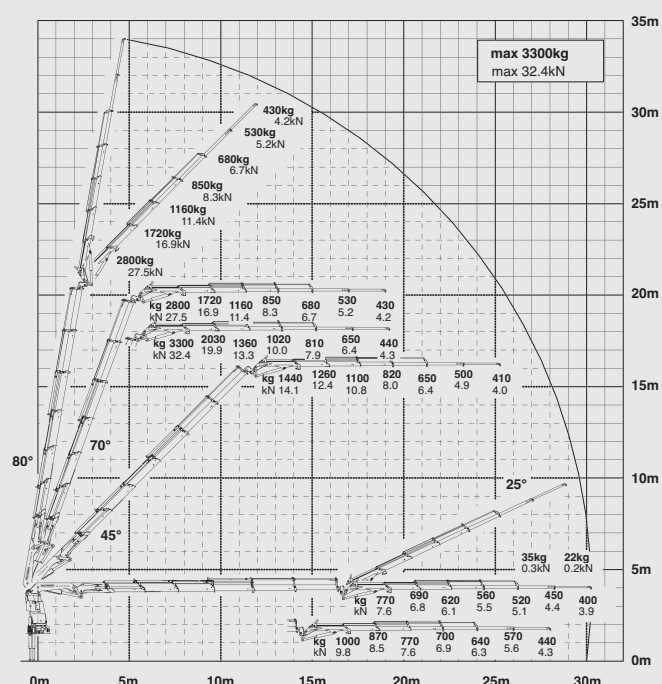
E



D PJ 125 E JV1 DPS PLUS



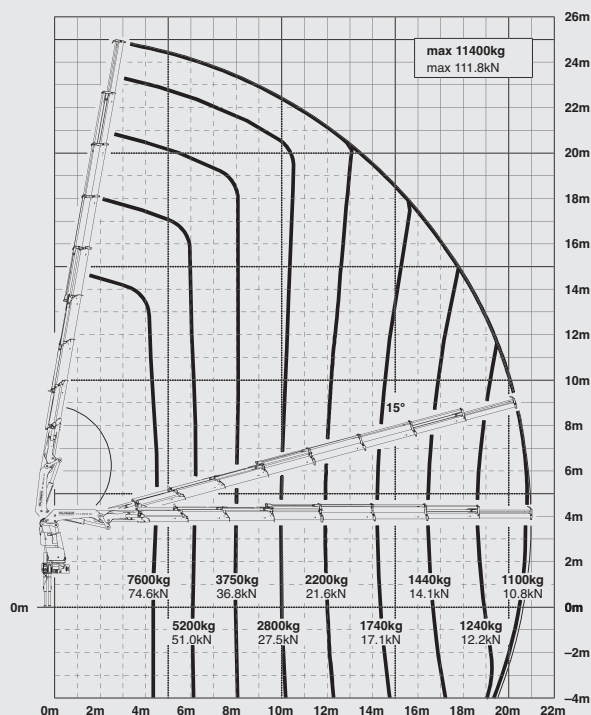
E PJ 080C JV2 DPS PLUS



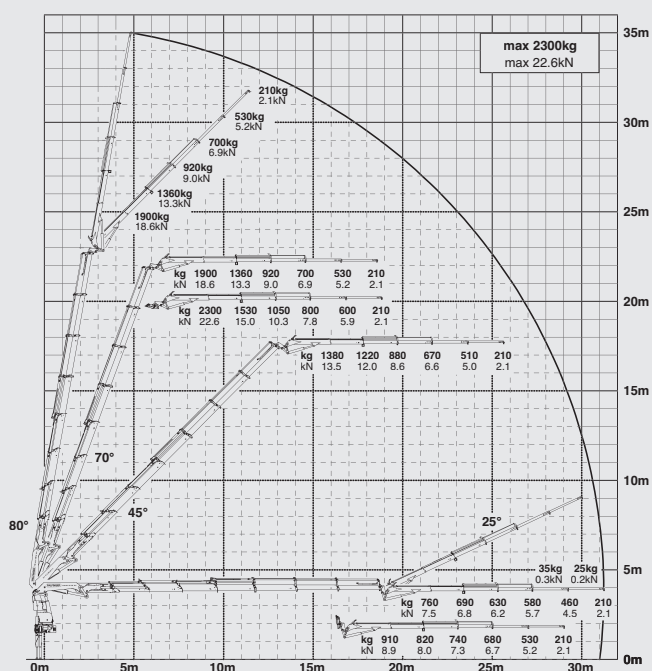


# PERFECT FOR HIGH OUTREACHES

G



F PJ 060B JV2 DPS PLUS



## LIFTING CAPACITIES

| A | max.  |         | 14300 kg | 31500 lbs |
|---|-------|---------|----------|-----------|
|   | 4.1 m | 13' 5"  | 9300 kg  | 20500 lbs |
|   | 5.8 m | 19' 0"  | 6700 kg  | 14700 lbs |
|   | 7.6 m | 24' 11" | 5100 kg  | 11200 lbs |

| B | max.  |         | 13900 kg | 30640 lbs |
|---|-------|---------|----------|-----------|
|   | 4.1 m | 13' 5"  | 9100 kg  | 20000 lbs |
|   | 5.8 m | 19' 0"  | 6400 kg  | 14100 lbs |
|   | 7.6 m | 24' 11" | 4850 kg  | 10700 lbs |
|   | 9.5 m | 31' 2"  | 3900 kg  | 8600 lbs  |

| C | max.   |         | 13400 kg | 29540 lbs |
|---|--------|---------|----------|-----------|
|   | 4.2 m  | 13' 9"  | 8700 kg  | 19300 lbs |
|   | 5.8 m  | 19' 0"  | 6200 kg  | 13500 lbs |
|   | 7.6 m  | 24' 11" | 4600 kg  | 10200 lbs |
|   | 9.6 m  | 31' 6"  | 3650 kg  | 8000 lbs  |
|   | 11.6 m | 38' 1"  | 3000 kg  | 6600 lbs  |

| D | max.   |         | 12700 kg | 27990 lbs |
|---|--------|---------|----------|-----------|
|   | 4.3 m  | 14' 1"  | 8400 kg  | 18400 lbs |
|   | 6.0 m  | 19' 8"  | 5900 kg  | 12900 lbs |
|   | 7.8 m  | 25' 7"  | 4350 kg  | 9600 lbs  |
|   | 9.7 m  | 31' 10" | 3400 kg  | 7500 lbs  |
|   | 11.7 m | 38' 5"  | 2750 kg  | 6100 lbs  |
|   | 13.9 m | 45' 7"  | 2300 kg  | 5100 lbs  |

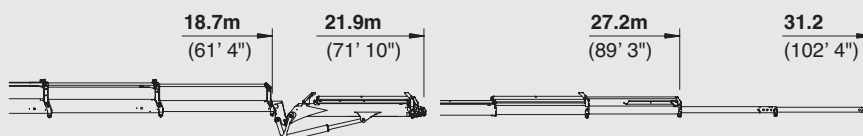
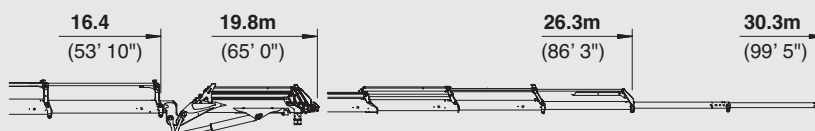
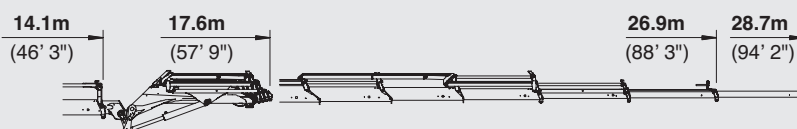
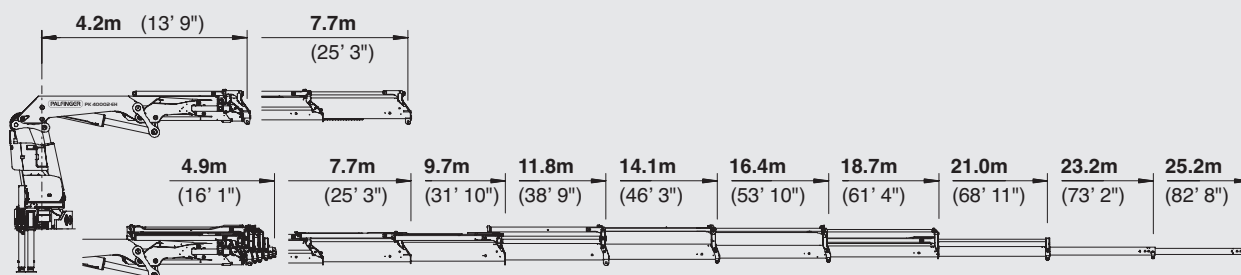
| E | max.   |         | 12200 kg | 26890 lbs |
|---|--------|---------|----------|-----------|
|   | 4.4 m  | 14' 5"  | 8000 kg  | 17700 lbs |
|   | 6.1 m  | 20' 0"  | 5600 kg  | 12300 lbs |
|   | 7.9 m  | 25' 11" | 4100 kg  | 9100 lbs  |
|   | 9.8 m  | 32' 2"  | 3150 kg  | 7000 lbs  |
|   | 11.8 m | 38' 9"  | 2550 kg  | 5600 lbs  |
|   | 14.0 m | 45' 11" | 2100 kg  | 4600 lbs  |
|   | 16.3 m | 53' 6"  | 1780 kg  | 3950 lbs  |

| F | max.   |         | 11700 kg | 25790 lbs |
|---|--------|---------|----------|-----------|
|   | 4.5 m  | 14' 9"  | 7700 kg  | 17000 lbs |
|   | 6.2 m  | 20' 4"  | 5400 kg  | 11800 lbs |
|   | 8.0 m  | 26' 3"  | 3900 kg  | 8600 lbs  |
|   | 9.9 m  | 32' 6"  | 3000 kg  | 6600 lbs  |
|   | 11.9 m | 39' 1"  | 2350 kg  | 5200 lbs  |
|   | 14.1 m | 46' 3"  | 1900 kg  | 4200 lbs  |
|   | 16.4 m | 53' 10" | 1600 kg  | 3550 lbs  |
|   | 18.6 m | 61' 0"  | 1400 kg  | 3100 lbs  |

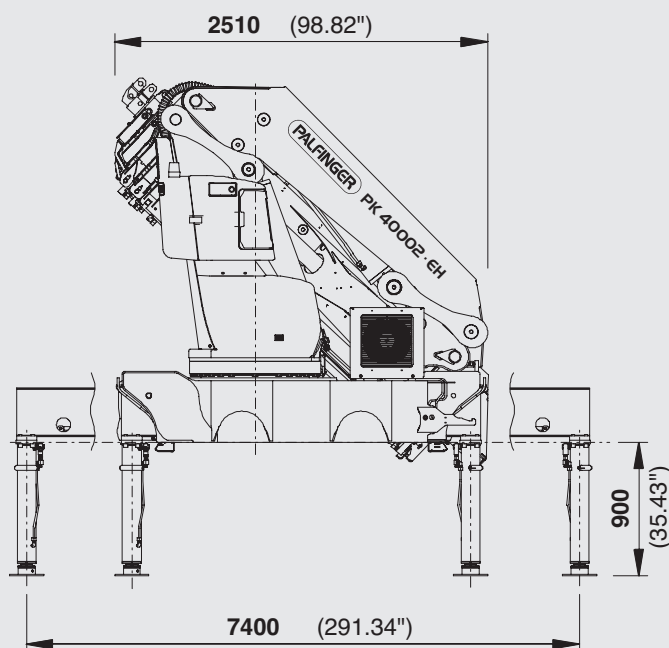
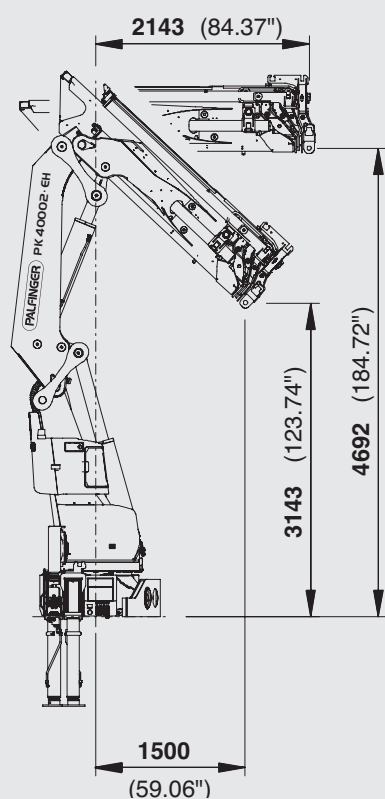
| G | max.    |         | 11400 kg | 25130 lbs |
|---|---------|---------|----------|-----------|
|   | 4.5 m   | 14' 9"  | 7600 kg  | 16700 lbs |
|   | 6.2 m   | 20' 4"  | 5200 kg  | 11500 lbs |
|   | 8.0 m   | 26' 3"  | 3750 kg  | 8300 lbs  |
|   | 9.9 m   | 32' 6"  | 2800 kg  | 6200 lbs  |
|   | 12.0 m  | 39' 4"  | 2200 kg  | 4850 lbs  |
|   | 14.2 m  | 46' 7"  | 1740 kg  | 3850 lbs  |
|   | 16.4 m  | 53' 10" | 1440 kg  | 3200 lbs  |
|   | 18.6 m  | 61' 0"  | 1240 kg  | 2750 lbs  |
|   | 20.8 m  | 68' 3"  | 1100 kg  | 2450 lbs  |
|   | 23.0 m* | 75' 6"  | 900 kg   | 1980 lbs  |
|   | 25.0 m* | 82' 0"  | 600 kg   | 1320 lbs  |

# PERFECT DIMENSIONS

## EXTENSION BOOM VARIATIONS



## DIMENSIONS

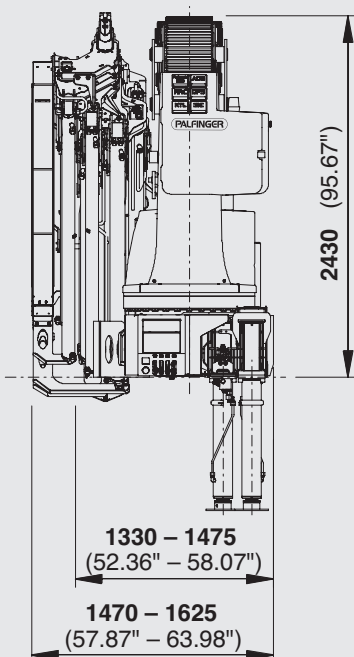


## PK 40002 EH

## D PJ125E JV1

## E PJ080C JV2

## F PJ060B JV2



## TECHNICAL SPECIFICATIONS (EN 12999 HC1 HD4/B3)

|                               |                               |                                      |
|-------------------------------|-------------------------------|--------------------------------------|
| Max. lifting moment           | 39.3 mt/385.5 kNm             | 284330 ft.lbs                        |
| Max. lifting capacity         | 14600 kg/143.2 kN             | 32190 lbs                            |
| Max. hydraulic outreach       | 21.0 m                        | 68' 11"                              |
| Max. manual outreach          | 25.2 m                        | 82' 8"                               |
| max. outreach (with fly-jib)  | 31.2 m                        | 102' 4"                              |
| Slewing angle                 | endless                       |                                      |
| Slewing torque with 1 gear    | 3.8 mt/37.3 kNm               | 27510 ft.lbs                         |
| Slewing torque with 2 gears   | 5.0 mt/49.1 kNm               | 36210 ft.lbs                         |
| Stabiliser spread             | 7.4 m                         | 24' 3"                               |
| Fitting space required (std.) | min. 1.33 m / 4' 4"           | max. 1.47 m / 4' 10"                 |
| Width folded                  | 2.51 m                        | 8' 3"                                |
| Max. operating pressure       | 350 bar                       | 5075 psi                             |
| Recommended pump capacity     | from 80 l/min<br>to 100 l/min | 21.1 US gal./min<br>26.4 US gal./min |
| Dead weight (std.)            | 3851 kg                       | 8490 lbs                             |

## PACKAGE MODEL

- E-HPLS
- Paltronic 50
- Radio remote control with LED display
- Danfoss control valve or PVG2000
- 10,5 kW oil cooler



