

PK 42002 SH

PALFINGER

LIFETIME EXCELLENCE

POWER LINK PLUS DELIVERS EXTREME VERSATILITY AND ENABLES CRANE WORK EVEN UNDER DIFFICULT CONDITION



LIFETIME EXCELLENCE

PALFINGER LOADER CRANES ARE CONVINCING DUE TO THEIR SUPERIOR LIFE-CYCLE PERFORMANCE. THEY ARE THE MOST ECONOMICAL AND ALSO THE MOST RELIABLE OVER THE ENTIRE PRODUCT LIFE. FROM SOLUTION FINDING TO RESALE.

BETTER
SOLUTIONS

BETTER
EFFICIENCY

BETTER
ERGONOMICS

HIGHER VALUE
RETENTION



HIGHER
AVAILABILITY

HIGHER
SERVICEABILITY

BETTER
ECOLOGY

MORE
RELIABILITY



HEAVY-DUTY CRANE TECHNOLOGY OF THE HIGHEST STANDARD





- High value retention due to KTL coating
- More comfort and safety due to Soft Stop
- Maximum utilisation of the working range due to HPSC
- More lifting power due to S-HPLS
- More efficient and faster due to continuous slewing



PERFECT TOOL WITH SOPHISTICATED KINEMATICS

12 HIGHLIGHTS



CONTINUOUS SLEWING SYSTEM
UNRESTRICTED MOVEMENT

More efficient in operation due to faster loading cycles, since the crane can be slewed over a shorter distance. The crane works more efficiently and faster.



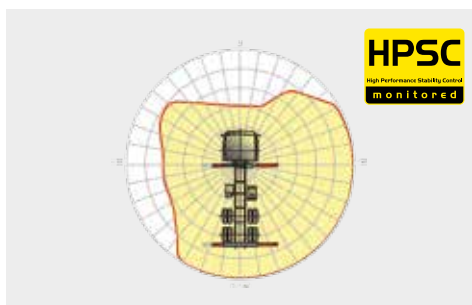
POWER LINK PLUS
HIGH VARIETY OF USES

With the 15-degree reverse linkage system, you can reach through low door openings and also work inside buildings. Heavy crane work – even in difficult conditions.



LOW-MAINTENANCE EXTENSION SYSTEM
REDUCES SERVICE TIME

With sliding elements made of synthetic material and the high-quality KTL coating, this boom system significantly simplifies service performed by the operator. This saves time and money – and protects the environment.



HPSC
MAXIMUM UTILISATION OF THE WORKING RANGE

The variable stabiliser positioning of the High Performance Stability Control System makes it possible to utilise the lifting capacity to the maximum. It enables working within tight spaces.



S-HPLS
MORE LIFTING POWER WHEN IT IS REALLY NEEDED

S-HPLS is one of the most important functions of the PALTRONIC 150. It is a fully automatic system for increasing the lifting power. Depending on the need, there is continuous adaptation of the lifting power and speed of the crane.



CONTROL TECHNOLOGY
COMMUNICATION WITH THE OPERATOR

New standards in operator friendliness through perfect interaction between PALTRONIC 150, control valve and radio remote control. The operator is guided clearly and safely.



POWER LINK CABLE WINCH
MORE COMFORT IN CABLE WINCH OPERATION

Characterised by low installation height, it is ideal for working inside buildings and transports with the crane boom unfolded. The Comfort Cable Routing reduces set-up times to a minimum.



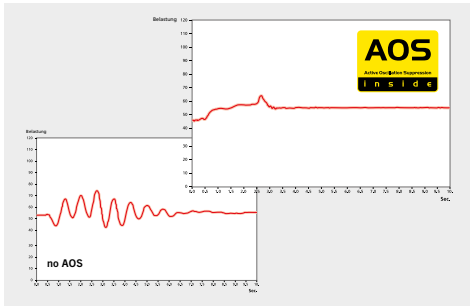
FUNCTIONAL DESIGN
PRACTICAL AND ATTRACTIVE

Robust plastic covers protect crane parts against dirt and damage. Better appearance and increased operational comfort – during the entire lifetime.



KTL – CATHODIC DIP PAINTING
FOR RETAINING HIGH VALUE

The UV-resistant coating guarantees long-term surface protection. Perfect appearance during the entire lifetime for maximum resale value.



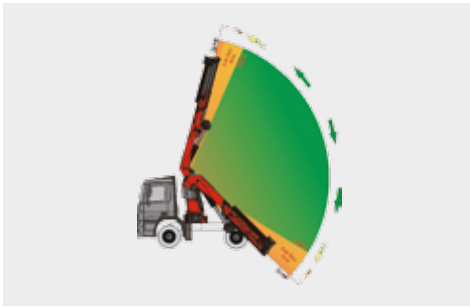
AOS
MAXIMUM PRECISION AND SAFETY

The active oscillation suppression system prevents "post-oscillation" in the event of rapid braking or load changes. The stress peaks on the extension boom system are reduced and material fatigue and wear are minimised. This increases the resale value.



DPS PLUS
MORE EFFICIENT FLY-JIB OPERATION

The Dual Power System allows multiple uses of the crane both for large outreaches as well as for heavy load operation.



SOFT STOP FUNCTION
MORE COMFORT AND SAFETY

The Soft Stop function is an electronic limit position damper. It causes gentle braking of all crane movements before the limit position is reached. Hence, jerky movements and load impacts can be avoided. The crane can be operated more gently and precisely.

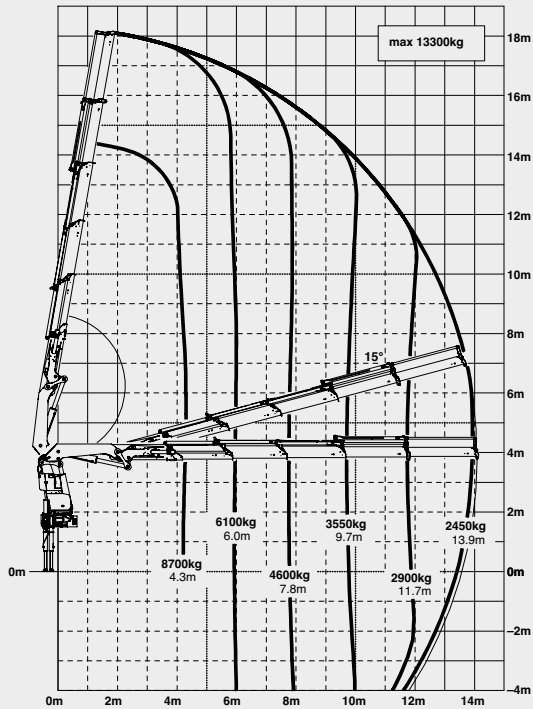


* Optional features / country-specific equipment

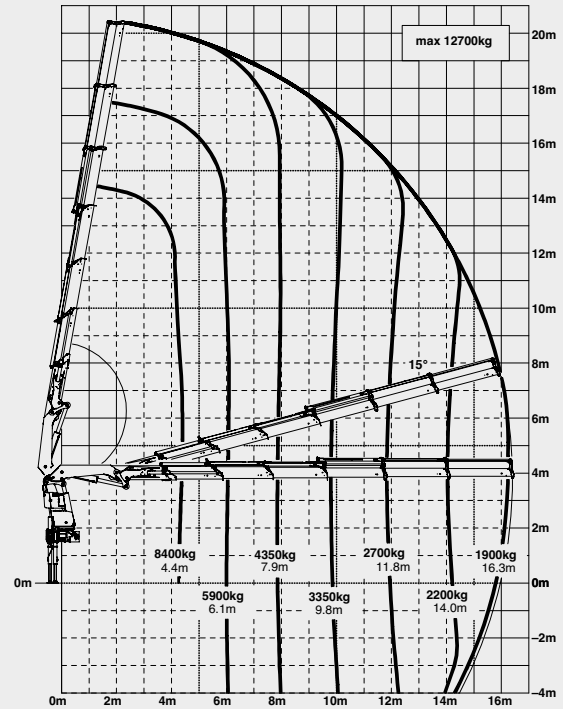
PK 42002 SH

HIGH PERFORMANCE

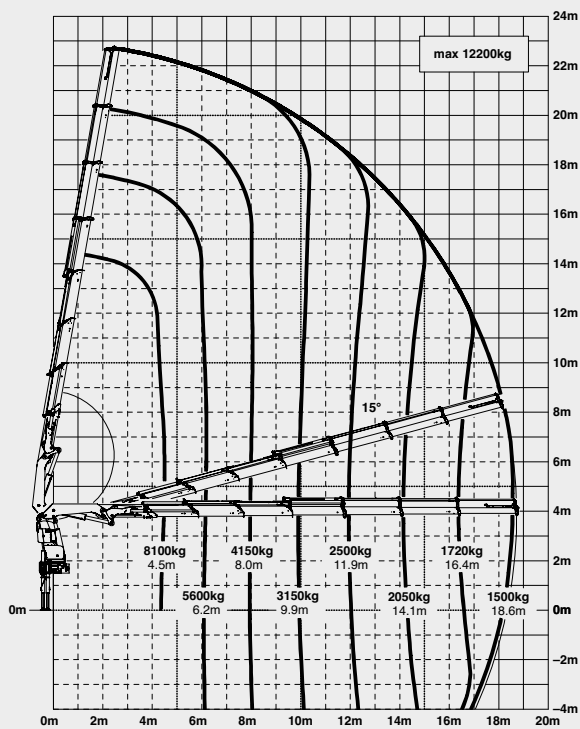
D



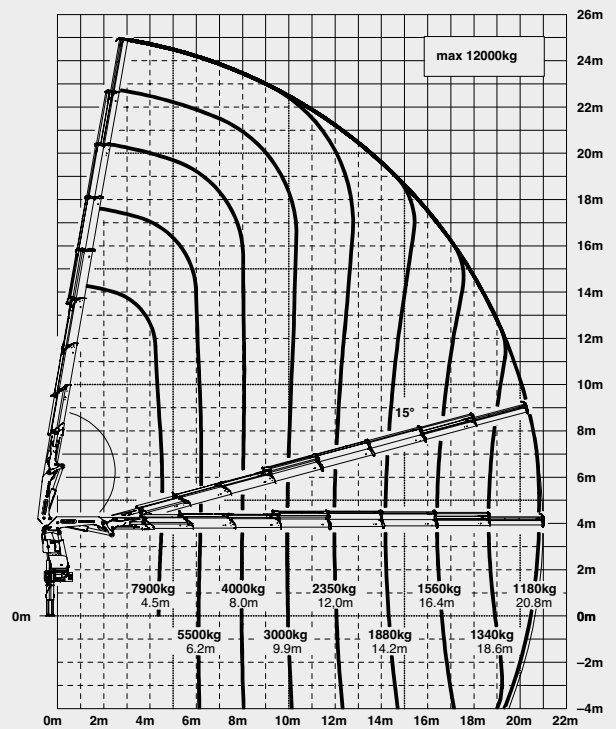
E



F

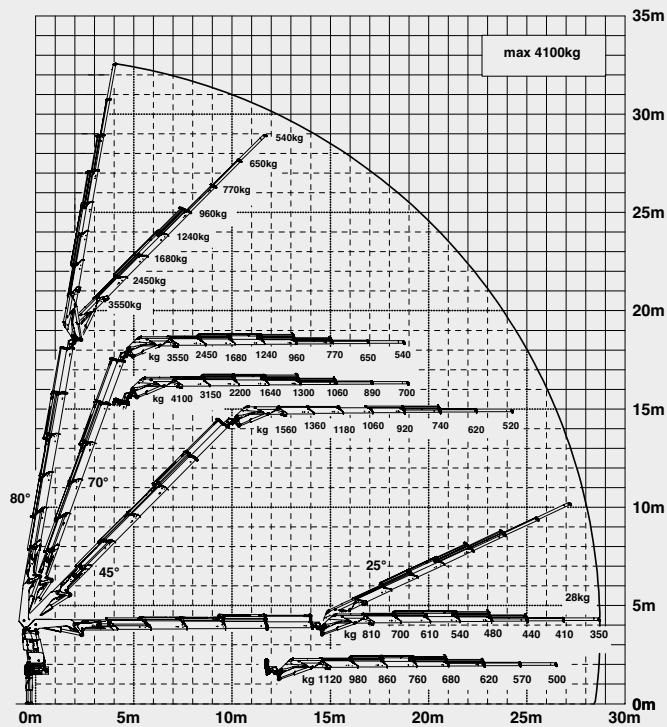


G

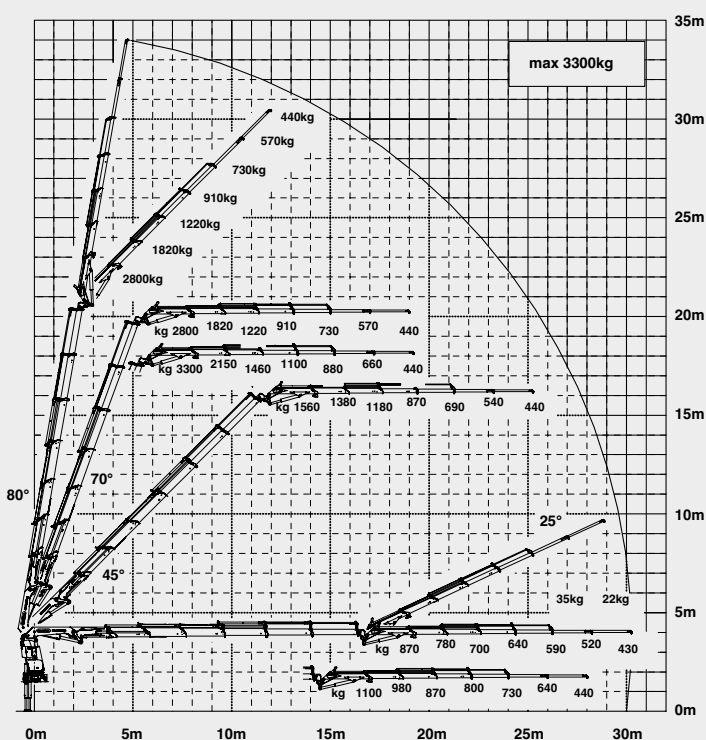


MORE LIFTING POWER WHEN IT IS REALLY NEEDED

D PJ125E JV1 DPS PLUS



E PJ080C JV2 DPS PLUS



LIFTING CAPACITIES

A	max.	14900 kg	32900 lbs
	4.1 m	13' 5"	9600 kg
	5.8 m	19' 0"	6900 kg
	7.6 m	24' 11"	5300 kg

B	max.	14600 kg	32200 lbs
	4.2 m	13' 9"	9400 kg
	5.8 m	19' 0"	6700 kg
	7.6 m	24' 11"	5100 kg
	9.6 m	31' 6"	4050 kg

C	max.	14100 kg	31100 lbs
	4.2 m	13' 9"	9100 kg
	5.8 m	19' 0"	6400 kg
	7.6 m	24' 11"	4850 kg
	9.6 m	31' 6"	3800 kg
	11.6 m	38' 1"	3150 kg

D	max.	13300 kg	29300 lbs
	4.3 m	14' 1"	8700 kg
	6.0 m	19' 8"	6100 kg
	7.8 m	25' 7"	4600 kg
	9.7 m	31' 10"	3550 kg
	11.7 m	38' 5"	2900 kg
	13.9 m	45' 7"	2450 kg

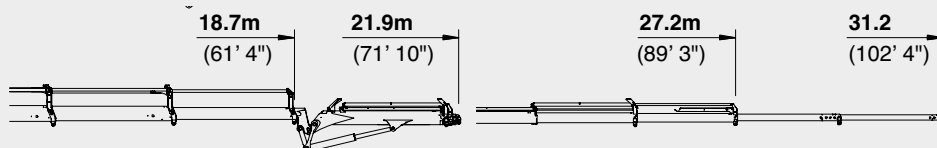
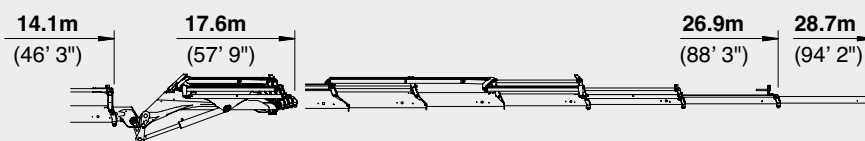
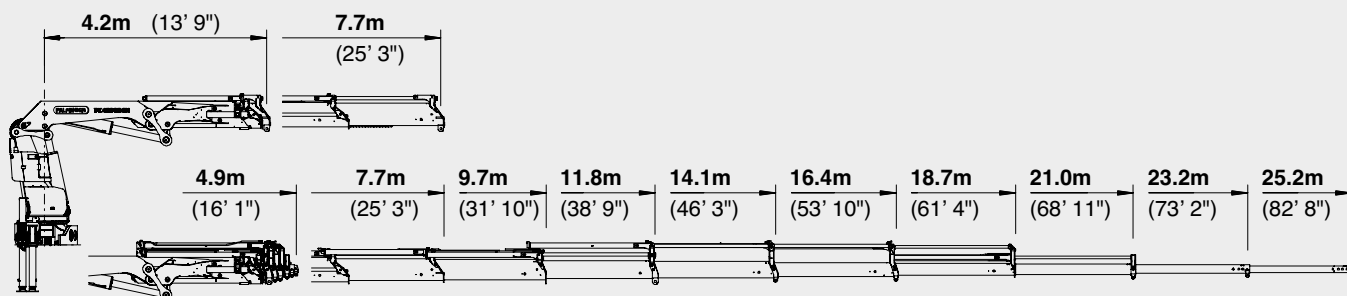
E	max.	12700 kg	28000 lbs
	4.4 m	14' 5"	8400 kg
	6.1 m	20' 0"	5900 kg
	7.9 m	25' 11"	4350 kg
	9.8 m	32' 2"	3350 kg
	11.8 m	38' 9"	2700 kg
	14.0 m	45' 11"	2200 kg
	16.3 m	53' 6"	1900 kg

F	max.	12200 kg	26900 lbs
	4.5 m	14' 9"	8100 kg
	6.2 m	20' 4"	5600 kg
	8.0 m	26' 3"	4150 kg
	9.9 m	32' 6"	3150 kg
	11.9 m	39' 1"	2500 kg
	14.1 m	46' 3"	2050 kg
	16.4 m	53' 10"	1720 kg
	18.6 m	61' 0"	1500 kg

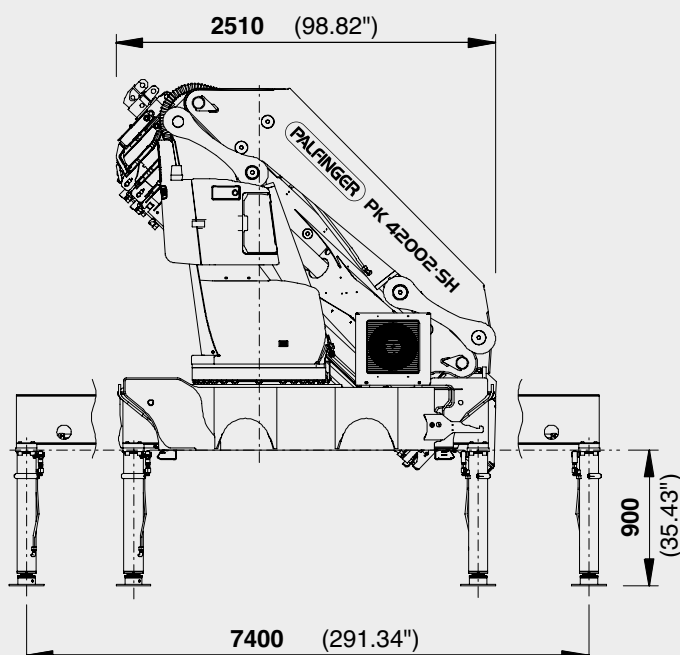
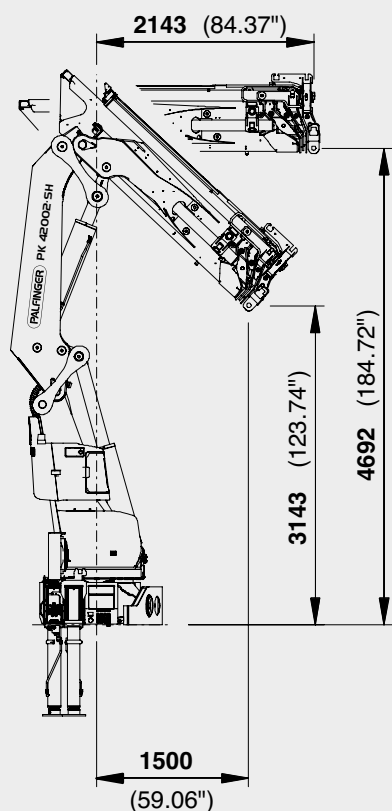
G	max.	12000 kg	26500 lbs
	4.5 m	14' 9"	7900 kg
	6.2 m	20' 4"	5500 kg
	8.0 m	26' 3"	4000 kg
	9.9 m	32' 6"	3000 kg
	12.0 m	39' 4"	2350 kg
	14.2 m	46' 7"	1880 kg
	16.4 m	53' 10"	1560 kg
	18.6 m	61' 0"	1340 kg
	20.8 m	68' 3"	1180 kg
	23.0 m*	75' 6"	900 kg
	25.0 m*	82' 0"	600 kg

PERFECT DIMENSIONS

EXTENSION BOOM VARIATIONS



DIMENSIONS



PK 42002 SH

D PJ125E JV1

E PJ080C JV2

F PJ060B JV2

TECHNICAL SPECIFICATIONS (EN 12999 HC1 HD5/B3)

Max. lifting moment	41.1 mt/402,8 kNm	297070 ft.lbs
Max. lifting capacity	15000 kg/147,2 kN	33070 lbs
Max. hydraulic outreach	21.0 m	68' 11"
Max. manual outreach	25.2 m	82' 8"
Max. outreach (with fly-jib)	31.2 m	102' 4"
Slewing angle	endless	
Slewing torque with 1 gear	3.8 mt/37.3 kNm	27490 ft.lbs
Slewing torque with 2 gears	5.0 mt/49.1 kNm	36170 ft.lbs
Stabiliser spread	7.4 m	24' 3"
Fitting space required (std.)	min. 1.33 m/4' 4"	max. 1.47 m/4' 10"
Width folded	2.51 m	8' 3"
Max. operating pressure	365 bar	5293 psi
Recommended pump capacity	from 90 l/min to 120 l/min	23.8 US gal./min 31.7 US gal./min
Dead weight (std.)	3851 kg	8490 lbs

