

**PK 53002 SH**

**PALFINGER**

LIFETIME EXCELLENCE

**OPERATOR FRIENDLY AND SENSITIVE  
CONTROLLABLE. IMPRESSIVE ATTRIBUTES  
FOR DELICATE OPERATIONS.**



# LIFETIME EXCELLENCE

**PALFINGER LOADER CRANES ARE CONVINCING DUE TO THEIR SUPERIOR LIFE-CYCLE PERFORMANCE. THEY ARE THE MOST ECONOMICAL AND ALSO THE MOST RELIABLE OVER THE ENTIRE PRODUCT LIFE. FROM SOLUTION FINDING TO RESALE.**

BETTER  
SOLUTIONS

BETTER  
EFFICIENCY

BETTER  
ERGONOMICS

HIGHER VALUE  
RETENTION



HIGHER  
AVAILABILITY

HIGHER  
SERVICEABILITY

BETTER  
ECOLOGY

MORE  
RELIABILITY





# MAXIMUM UTILISATION OF THE WORKING RANGE







- Increased comfort and safety due to Soft Stop
- Maximum utilisation of the working range due to HPSC
- More lifting power due to S-HPLS
- Continuous slewing for increased efficiency and speed
- Additional applications with Power Link Plus



# PERFECT TOOL WITH SOPHISTICATED KINEMATICS

## 12 HIGHLIGHTS



**CONTINUOUS SLEWING SYSTEM**  
UNRESTRICTED MOVEMENT

More efficient in operation due to faster loading cycles, since the crane can be slewed over a shorter distance. The crane works more efficiently and faster.



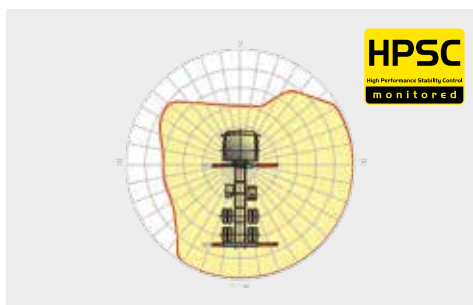
**POWER LINK PLUS**  
HIGH VARIETY OF USES

With the 15-degree reverse linkage system, you can reach through low door openings and also work inside buildings. Heavy crane work – even in difficult conditions.



**LOW-MAINTENANCE EXTENSION SYSTEM**  
REDUCES SERVICE TIME

With sliding elements made of synthetic material and the high-quality KTL coating, this boom system significantly simplifies service performed by the operator. This saves time and money – and protects the environment.



**HPSC**  
MAXIMUM UTILISATION OF THE WORKING RANGE

The variable stabiliser positioning of the High Performance Stability Control System makes it possible to utilise the lifting capacity to the maximum. It enables working within tight spaces.



**S-HPLS**  
MORE LIFTING POWER WHEN IT IS REALLY NEEDED

S-HPLS is one of the most important functions of the PALTRONIC 150. It is a fully automatic system for increasing the lifting power. Depending on the need, there is continuous adaptation of the lifting power and speed of the crane.



**CONTROL TECHNOLOGY**  
COMMUNICATION WITH THE OPERATOR

New standards in operator friendliness through perfect interaction between PALTRONIC 150, control valve and radio remote control. The operator is guided clearly and safely.



**POWER LINK CABLE WINCH**  
MORE COMFORT IN CABLE WINCH OPERATION

Characterised by low installation height, it is ideal for working inside buildings and transports with the crane boom unfolded. The Comfort Cable Routing reduces set-up times to a minimum.



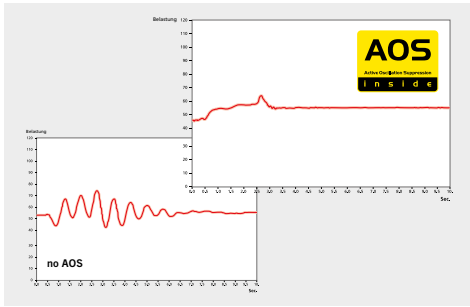
**FUNCTIONAL DESIGN**  
PRACTICAL AND ATTRACTIVE

Robust plastic covers protect crane parts against dirt and damage. Better appearance and increased operational comfort – during the entire lifetime.



**KTL – CATHODIC DIP PAINTING**  
FOR RETAINING HIGH VALUE

The UV-resistant coating guarantees long-term surface protection. Perfect appearance during the entire lifetime for maximum resale value.



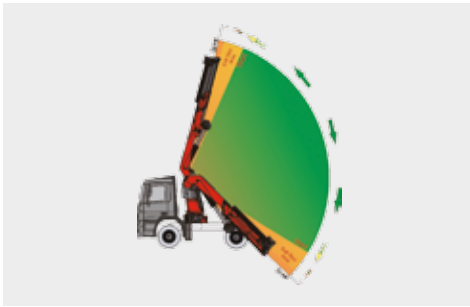
**AOS**  
MAXIMUM PRECISION AND SAFETY

The active oscillation suppression system prevents "post-oscillation" in the event of rapid braking or load changes. The stress peaks on the extension boom system are reduced and material fatigue and wear are minimised. This increases the resale value.



**DPS PLUS**  
MORE EFFICIENT FLY-JIB OPERATION

The Dual Power System allows multiple uses of the crane both for large outreaches as well as for heavy load operation.



**SOFT STOP FUNCTION**  
MORE COMFORT AND SAFETY

The Soft Stop function is an electronic limit position damper. It causes gentle braking of all crane movements before the limit position is reached. Hence, jerky movements and load impacts can be avoided. The crane can be operated more gently and precisely.

**KTL**  
protected

**Paltronic 150**  
controlled

**RRC**  
Radio Remote Control  
operated

**HPSC**  
High Performance Stability Control  
monitored

**AOS**  
Active Oscillation Suppression  
inside

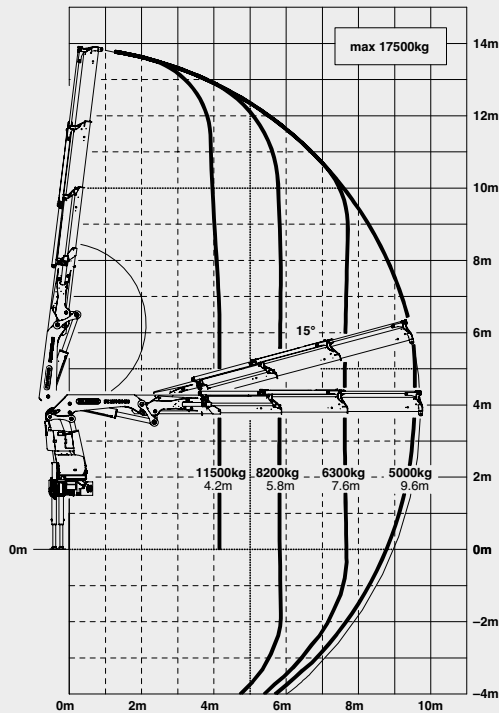
**DPS plus**  
Dual Power System  
activated

\* Optional features / country-specific equipment

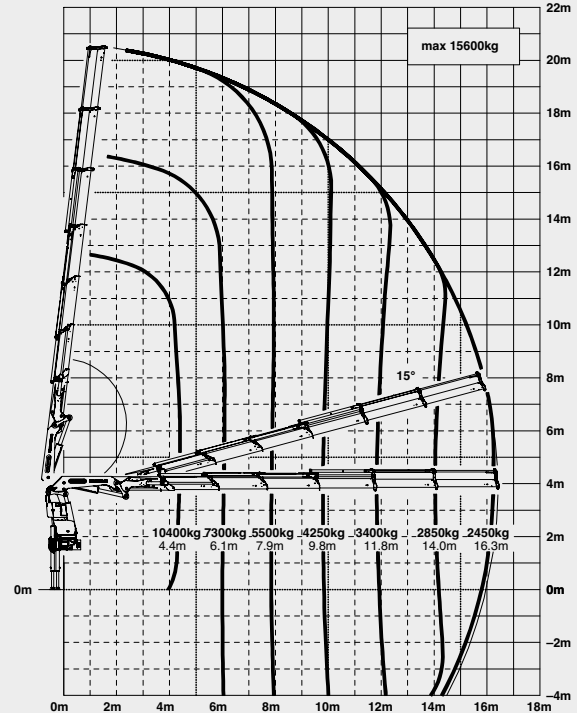
# PK 53002 SH

## HIGH PERFORMANCE

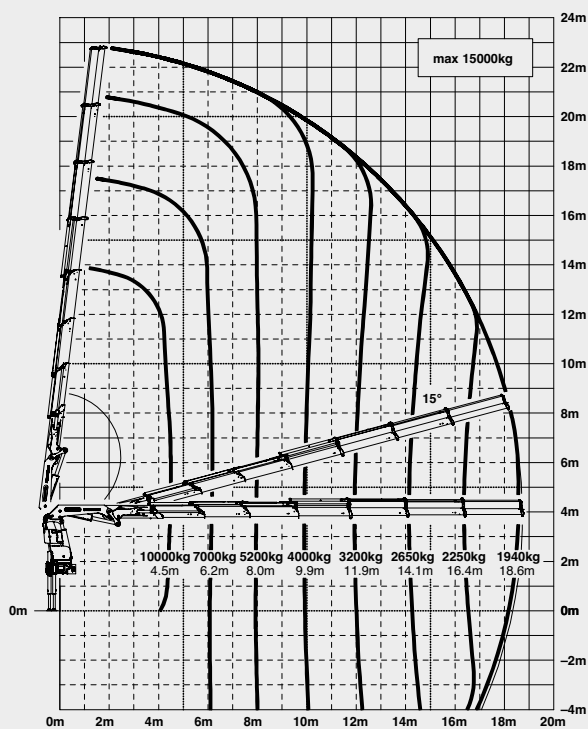
B



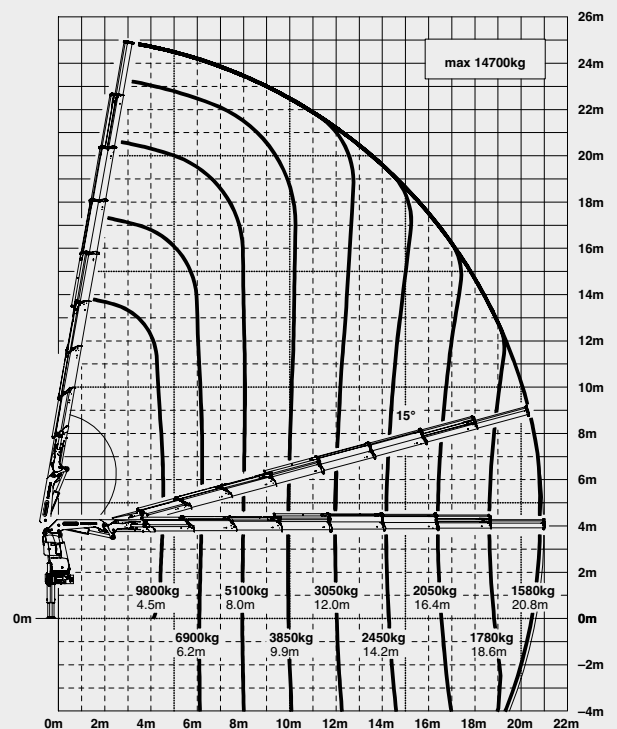
E



F



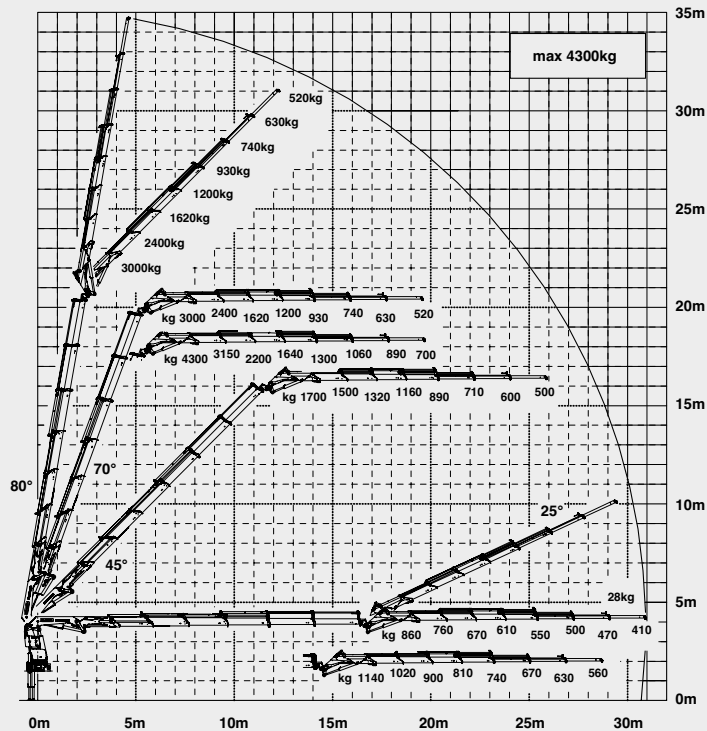
G



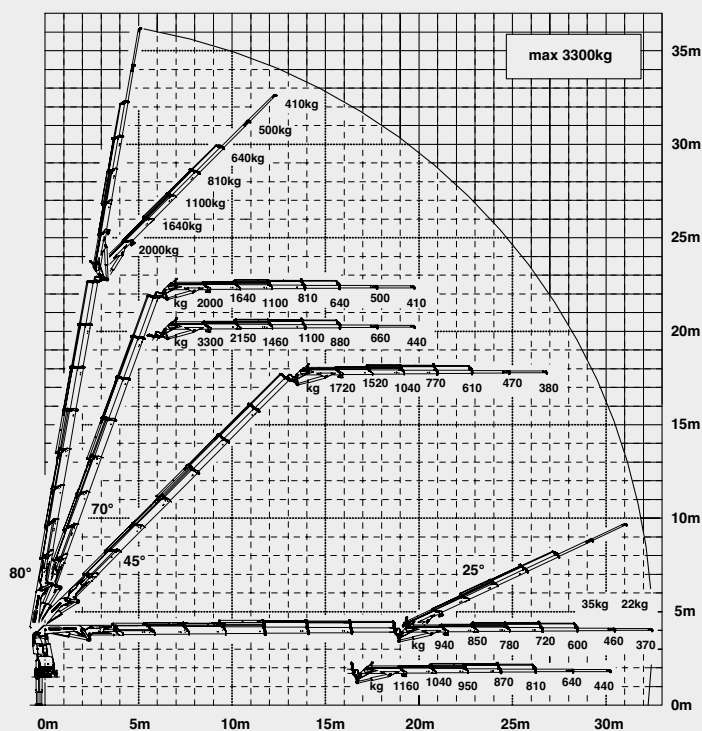


# MORE LIFTING POWER WHEN IT IS REALLY NEEDED

## E PJ125E JV1 DPS PLUS



## F PJ080C JV2 DPS PLUS



## LIFTING CAPACITIES

A	max.	17900 kg	39500 lbs
	4.1 m	13' 5"	11800 kg
	5.8 m	19' 0"	8500 kg
	7.6 m	24' 11"	6500 kg

B	max.	17500 kg	38600 lbs
	4.2 m	13' 9"	11500 kg
	5.8 m	19' 0"	8200 kg
	7.6 m	24' 11"	6300 kg
	9.6 m	31' 6"	5000 kg

C	max.	17200 kg	37900 lbs
	4.2 m	13' 9"	11200 kg
	5.8 m	19' 0"	8000 kg
	7.6 m	24' 11"	6000 kg
	9.6 m	31' 6"	4750 kg
	11.6 m	38' 1"	3900 kg

D	max.	16300 kg	36000 lbs
	4.3 m	14' 1"	10800 kg
	6.0 m	19' 8"	7600 kg
	7.8 m	25' 7"	5700 kg
	9.7 m	31' 10"	4450 kg
	11.7 m	38' 5"	3650 kg
	13.9 m	45' 7"	3050 kg

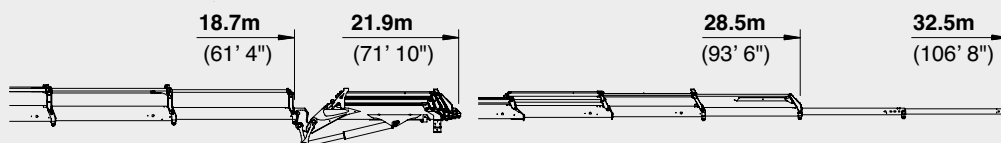
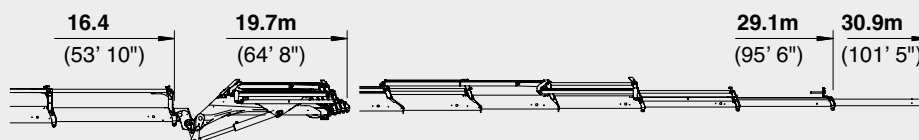
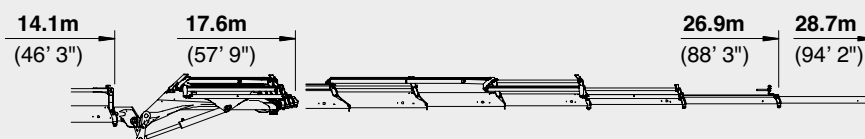
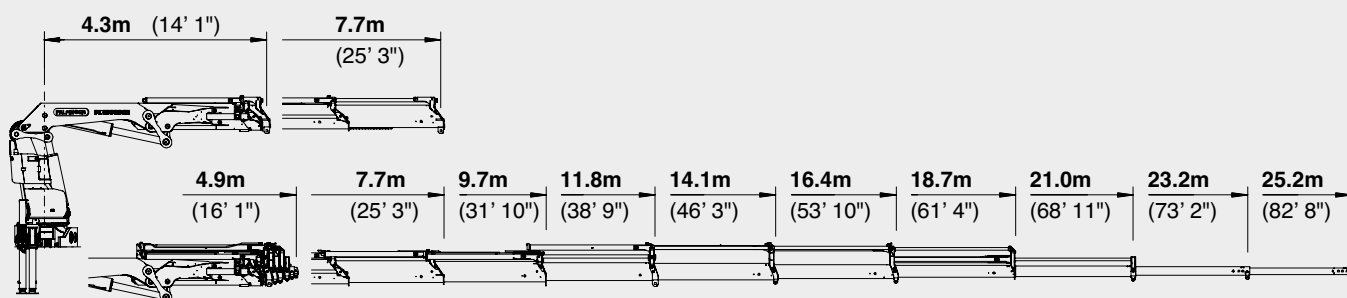
E	max.	15600 kg	34400 lbs
	4.4 m	14' 5"	10400 kg
	6.1 m	20' 0"	7300 kg
	7.9 m	25' 11"	5500 kg
	9.8 m	32' 2"	4250 kg
	11.8 m	38' 9"	3400 kg
	14.0 m	45' 11"	2850 kg
	16.3 m	53' 6"	2450 kg

F	max.	15000 kg	33100 lbs
	4.5 m	14' 9"	10000 kg
	6.2 m	20' 4"	7000 kg
	8.0 m	26' 3"	5200 kg
	9.9 m	32' 6"	4000 kg
	11.9 m	39' 1"	3200 kg
	14.1 m	46' 3"	2650 kg
	16.4 m	53' 10"	2250 kg
	18.6 m	61' 0"	1940 kg

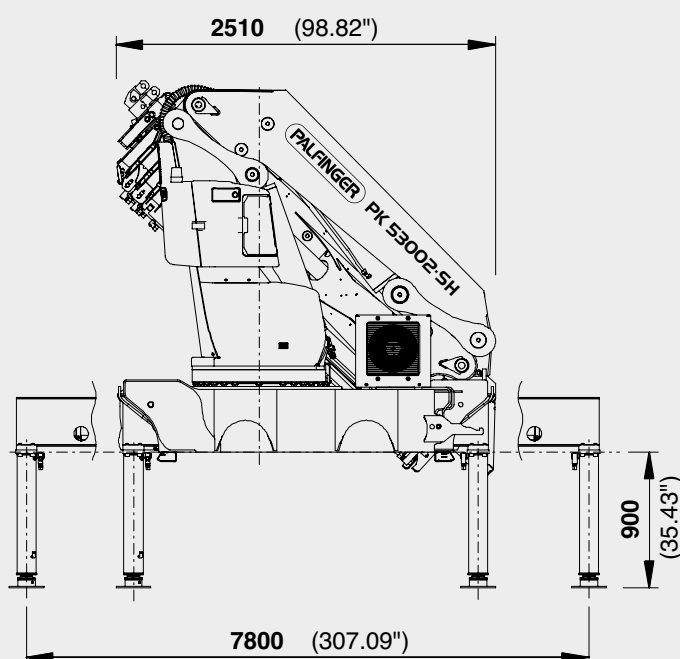
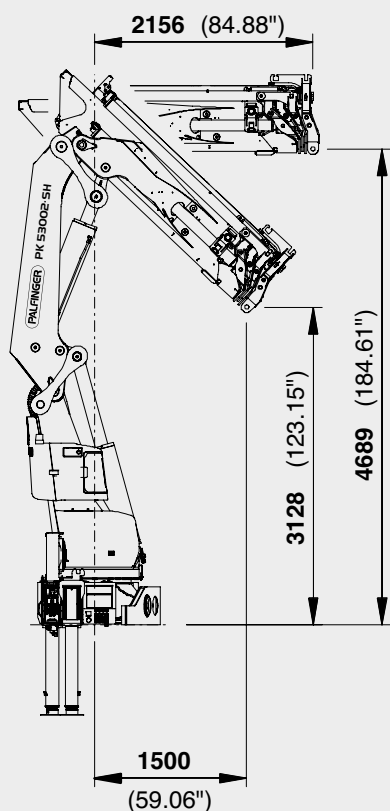
G	max.	14700 kg	32400 lbs
	4.5 m	14' 9"	9800 kg
	6.2 m	20' 4"	6900 kg
	8.0 m	26' 3"	5100 kg
	9.9 m	32' 6"	3850 kg
	12.0 m	39' 4"	3050 kg
	14.2 m	46' 7"	2450 kg
	16.4 m	53' 10"	2050 kg
	18.6 m	61' 0"	1780 kg
	20.8 m	68' 3"	1580 kg
	23.0 m*	75' 6"	900 kg
	25.0 m*	82' 0"	600 kg

# PERFECT DIMENSIONS

## EXTENSION BOOM VARIATIONS



## DIMENSIONS



**PK 53002 SH**

**D PJ125E JV1**

**E PJ125E JV1 DPS PLUS**

**F PJ080C JV2 DPS PLUS**

## TECHNICAL SPECIFICATIONS (EN 12999 HC1 HD5/B3)

Max. lifting moment	50.1 mt / 491.5 kNm	362480 ft.lbs
Max. lifting capacity	18200 kg / 178.5 kN	40120 lbs
Max. hydraulic outreach	21.0 m	68' 11"
Max. manual outreach	25.2 m	82' 8"
Max. outreach (with fly-jib)	32.5 m	106' 8"
Slewing angle	continuously variable	
Slewing torque with 1 gear	4.0 mt/39.2 kNm	28940 ft. lbs
Slewing torque with 2 gears	5.5 mt/54.0 kNm	39790 ft. lbs
Stabiliser spread	7.8 m	25' 7"
Fitting space required (std.)	min. 1.33 m/4' 4"	max. 1.47 m/4' 10"
Width folded	2.51 m	8' 3"
Max. operating pressure	365 bar	5293 psi
Recommended pump capacity	from 90 l/min	23.8 US gal./min
	to 120 l/min	31.7 US gal./min
Dead weight (std.)	4145 kg	9140 lbs

