

PK 110002 SH

PALFINGER

LIFETIME EXCELLENCE

THE LATEST CONTROL TECHNOLOGY SET STANDARDS IN OPERATOR FRIENDLINESS AND COMFORT



LIFETIME EXCELLENCE

PALFINGER LOADER CRANES ARE OUTSTANDING WITH THEIR SUPERIOR LIFE-CYCLE PERFORMANCE. THEY ARE THE MOST ECONOMICAL AND ALSO THE MOST RELIABLE OVER THE ENTIRE PRODUCT LIFE. FROM SOLUTION FINDING TO RESALE.

BETTER
SOLUTIONS

BETTER
EFFICIENCY

BETTER
ERGONOMICS

HIGHER VALUE
RETENTION



HIGHER
AVAILABILITY

HIGHER
SERVICEABILITY

BETTER
ECOLOGY

MORE
RELIABILITY



OFFERS NUMEROUS COMFORT AND SAFETY FEATURES





- Maximum utilisation of the working range due to HPSC
- More lifting power due to S-HPLS
- High degree of user-friendliness thanks to optional radio remote control
- Additional applications with Power Link Plus
- More efficiency with fly jib due to DPS Plus



PERFECT TOOL WITH SOPHISTICATED KINEMATICS

12 HIGHLIGHTS



CONTINUOUS SLEWING SYSTEM
UNRESTRICTED MOVEMENT

More efficient in operation due to faster loading cycles, since the crane can be slewed over a shorter distance. The crane works more efficiently and faster.



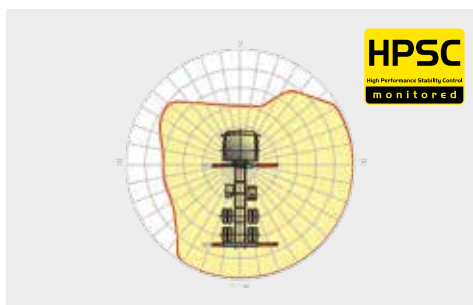
POWER LINK PLUS
WIDE-RANGING APPLICATIONS

With the 10 degree reverse linkage system, you can reach through low door openings and also work inside buildings. Heavy crane work – even in difficult conditions.



HIGH SPEED EXTENSION
FOR EFFICIENT ASSIGNMENTS

The High Speed Extension speeds up the extension boom system. Crane works faster and more efficiently.



HPSC
MAXIMUM UTILISATION OF THE WORKING RANGE

The variable stabiliser positioning of the High Performance Stability Control System allows the full lifting capacity of the crane to be used, even when working within tight spaces.



S-HPLS
MORE LIFTING POWER WHEN IT COUNTS

S-HPLS is one of the most important functions of the PALTRONIC 150. It is a fully automatic system for increasing lifting power. The lifting power and crane speed can be continuously adapted to suit requirements.



CONTROL TECHNOLOGY
COMMUNICATION WITH THE OPERATOR

New standards in operator-friendliness through perfect interaction between the PALTRONIC 150, the control valve and the wireless remote control. The operator is guided clearly and safely.



POWER LINK CABLE WINCH
IMPROVED COMFORT IN CABLE WINCH OPERATION

Characterised by a low installation height, it is ideal for working inside buildings and operates with the crane boom unfolded. The Comfort Cable Routing reduces set-up times to a minimum.



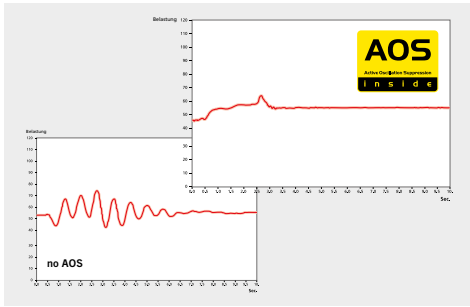
INTEGRAL BASE FRAME
PERFECT INTEGRATION

A Torsion resistant construction is possible due to an integral base frame. The low overall installation height and the weight savings allow for more efficiency in use.



HOSE EQUIPMENT FOR ATTACHMENTS
VERSATILE AND USER-FRIENDLY

The hose equipment offers an easy means of connecting auxiliary equipment. The hose equipment is guided in hose trays for protection.



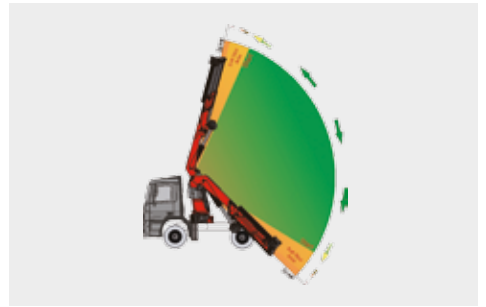
AOS
MAXIMUM PRECISION AND SAFETY

The active oscillation suppression system prevents "post-oscillation" in the event of rapid braking or load changes. The stress peaks on the extension boom system are reduced and material fatigue and wear are minimized. This increases the resale value.



DPS PLUS
MORE EFFICIENT FLY JIB OPERATION

The Dual Power System allows multiple uses of the crane both for large outreaches as well as for heavy load operation.



SOFT STOP FUNCTION
IMPROVED COMFORT AND SAFETY

The Soft Stop function is an electronic limit position damper. It causes gentle braking of all crane movements before the limit position is reached. Hence, jerky movements and load impacts can be avoided. The crane can be operated more gently and precisely.

Paltronic 150
controlled

RRC
Radio Remote Control
operated

HPSC
High Performance Stability Control
monitored

AOS
Active Oscillation Suppression
inside

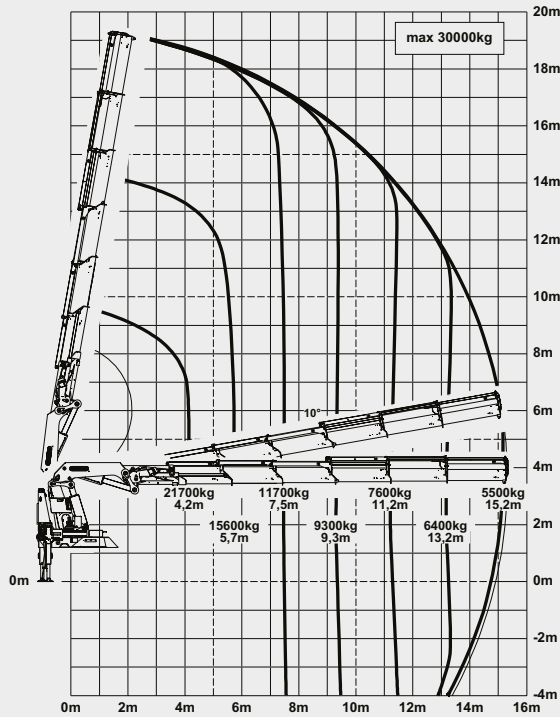
DPS plus
Dual Power System
activated

* Optional features / country-specific equipment

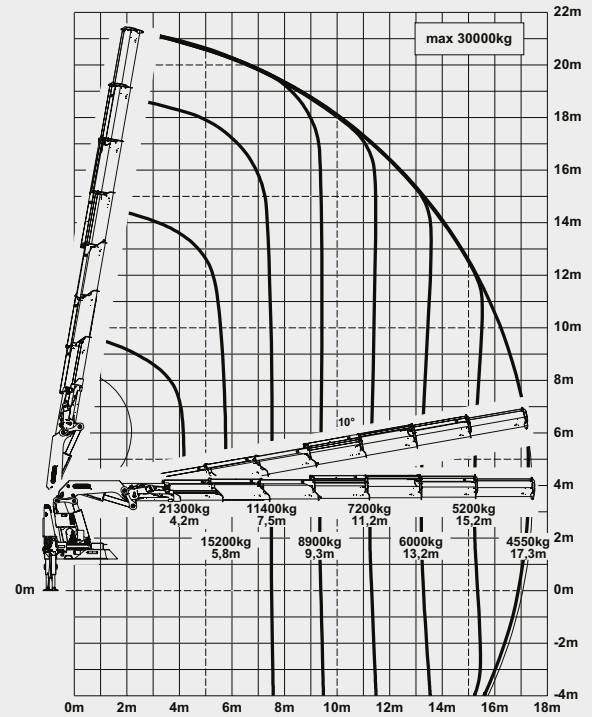
PK 110002 SH

HIGH PERFORMANCE

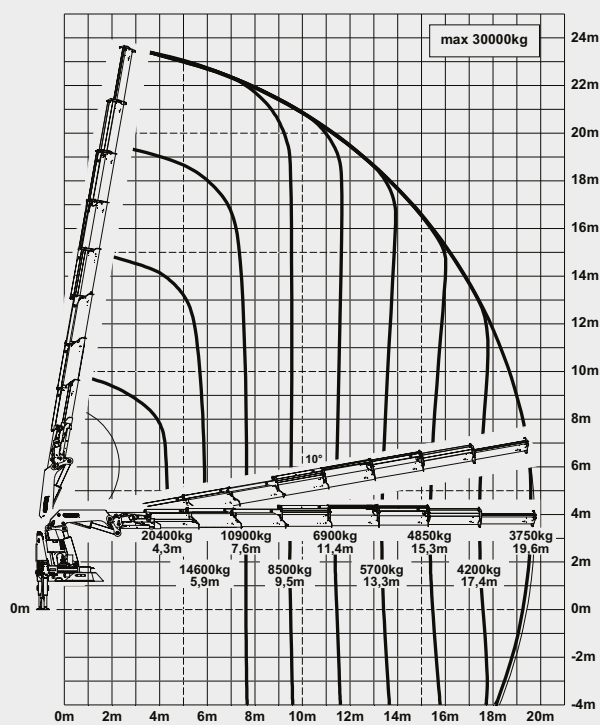
E



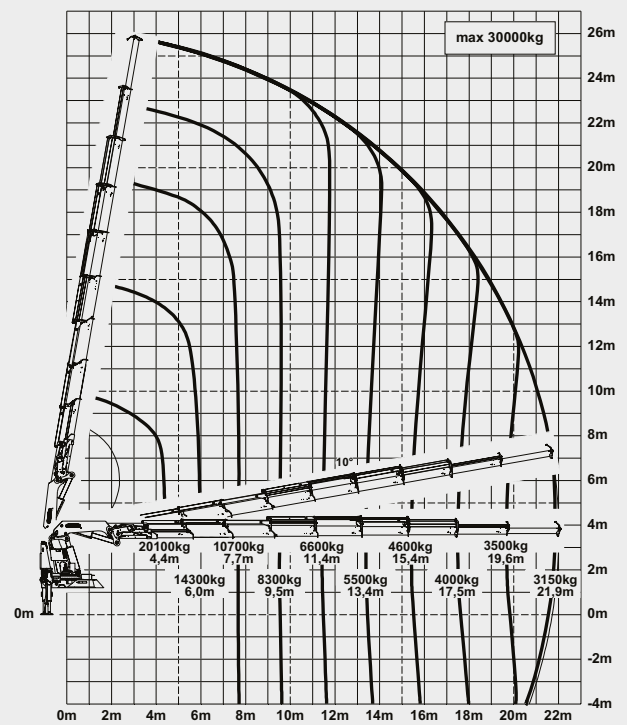
F



G

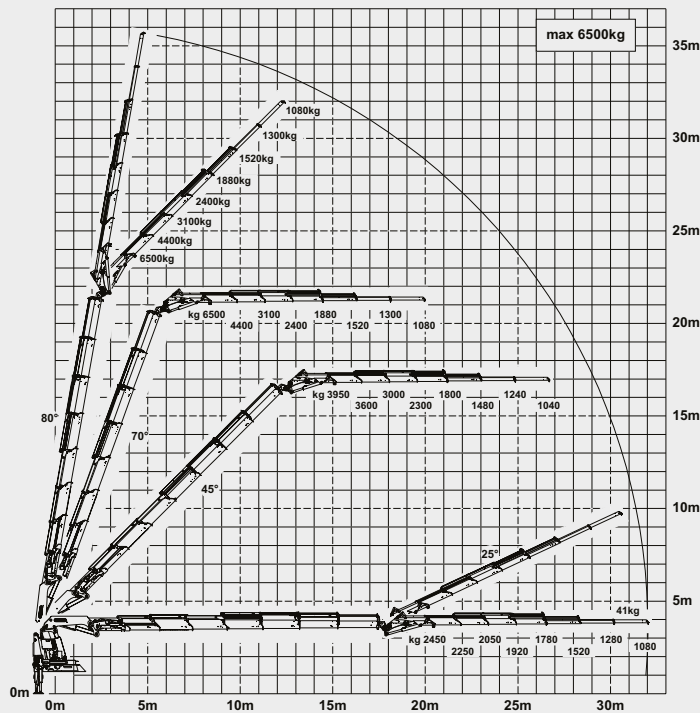


H

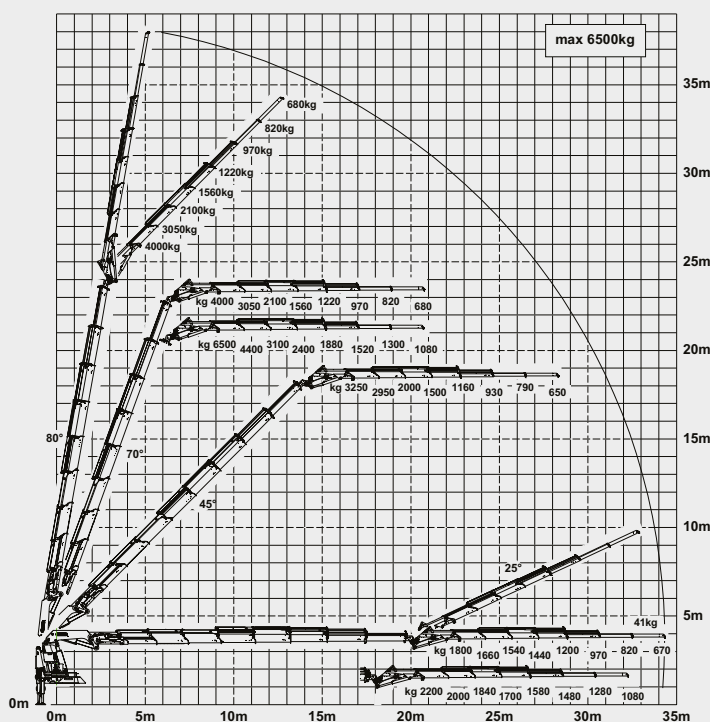


MORE LIFTING POWER WHEN IT IS REALLY NEEDED

F PJ170E JV1



G PJ170E JV1 DPS PLUS



LIFTING CAPACITIES

B	max.	30000 kg	66,200 lbs
	4.0 m	13 ft	23100 kg
	5.6 m	18 ft	16800 kg
	7.4 m	24 ft	12900 kg
	9.2 m	30 ft	10400 kg

C	max.	30000 kg	66,200 lbs
	4.1 m	13 ft	22600 kg
	5.7 m	19 ft	16400 kg
	7.4 m	24 ft	12500 kg
	9.2 m	30 ft	10000 kg
	11.1 m	37 ft	8300 kg

D	max.	30000 kg	66,200 lbs
	4.1 m	13 ft	22200 kg
	5.7 m	19 ft	16000 kg
	7.4 m	24 ft	12100 kg
	9.3 m	30 ft	9600 kg
	11.2 m	37 ft	8000 kg
	13.1 m	43 ft	6800 kg

E	max.	30000 kg	66,200 lbs
	4.2 m	14 ft	21700 kg
	5.7 m	19 ft	15600 kg
	7.5 m	25 ft	11700 kg
	9.3 m	31 ft	9300 kg
	11.2 m	37 ft	7600 kg
	13.2 m	43 ft	6400 kg
	15.2 m	50 ft	5500 kg

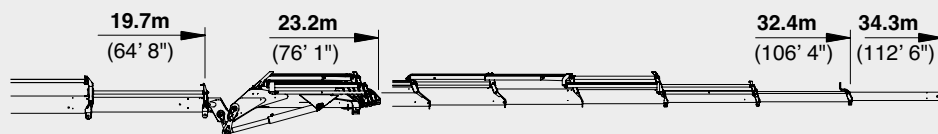
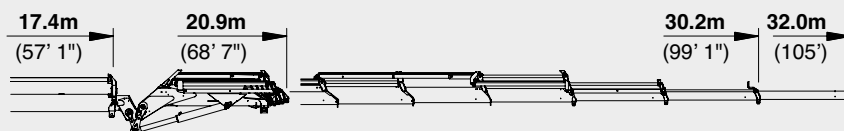
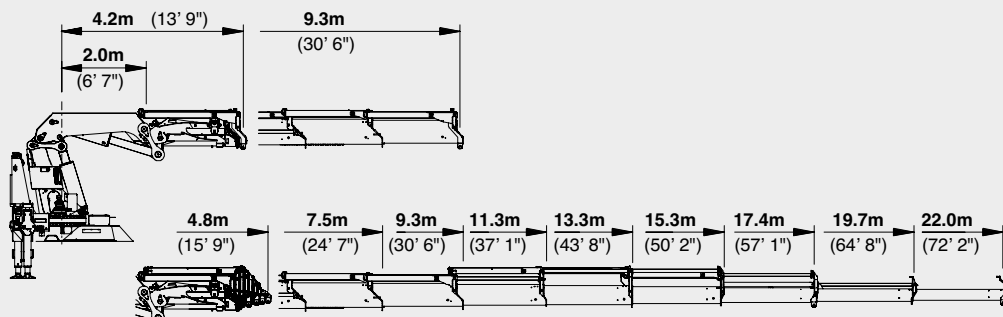
F	max.	30000 kg	66,200 lbs
	4.2 m	14 ft	21300 kg
	5.8 m	19 ft	15200 kg
	7.5 m	25 ft	11400 kg
	9.3 m	31 ft	8900 kg
	11.2 m	37 ft	7200 kg
	13.2 m	43 ft	6000 kg
	15.2 m	50 ft	5200 kg
	17.3 m	57 ft	4550 kg

G	max.	30000 kg	66,200 lbs
	4.3 m	14 ft	20400 kg
	5.9 m	19 ft	14600 kg
	7.6 m	25 ft	10900 kg
	9.5 m	31 ft	8500 kg
	11.4 m	37 ft	6900 kg
	13.3 m	44 ft	5700 kg
	15.3 m	50 ft	4850 kg
	17.4 m	57 ft	4200 kg
	19.6 m	64 ft	3750 kg

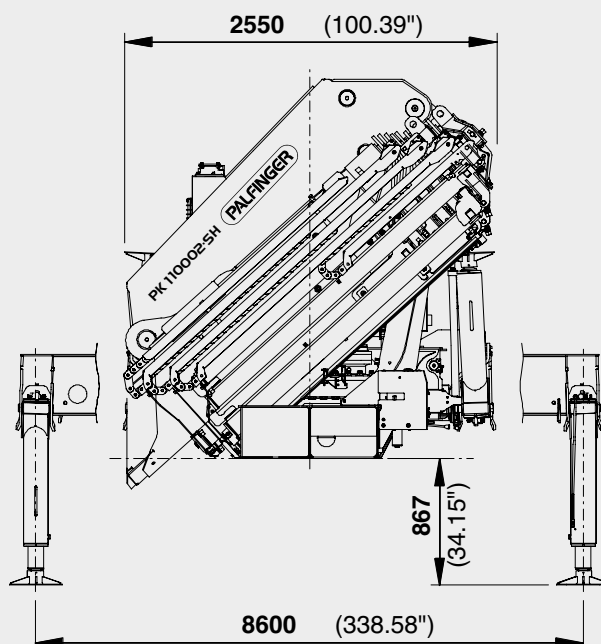
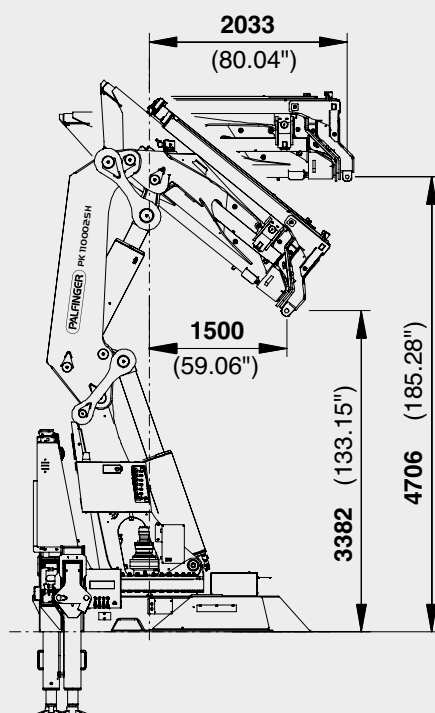
H	max.	30000 kg	66,200 lbs
	4.4 m	14 ft	20100 kg
	6.0 m	20 ft	14300 kg
	7.7 m	25 ft	10700 kg
	9.5 m	31 ft	8300 kg
	11.4 m	37 ft	6600 kg
	13.4 m	44 ft	5500 kg
	15.4 m	50 ft	4600 kg
	17.5 m	57 ft	4000 kg
	19.6 m	64 ft	3500 kg
	21.9 m	72 ft	3150 kg

PERFECT DIMENSIONS

EXTENSION BOOM VARIATIONS



DIMENSIONS



PK 110002 SH

F PJ170 E JV1

G PJ170E JV1 DPS PLUS

TECHNICAL SPECIFICATIONS (EN 12999 HC1 HD5/B3)

Max. lifting moment	98.5 mt/ 965.9 kNm	712350 ft.lbs
Max. lifting capacity	30000 kg/294.3 kN	66200 lbs
Max. hydraulic outreach	22.0 m	72' 2"
Max. manual outreach	22.0 m	72' 2"
Slewing angle	endless	
Slewing torque	9.0 mt/ 88.3 kNm	65110 ft.lbs
Stabilizer spread (std./max.)	8.6 m	28' 3"
Fitting space required (std.)	2.31 m/ 2.47 m	7' 7"/8' 1"
Width folded	2.55 m	8' 4"
Max. operating pressure	365 bar	5293 psi
Recommended pump capacity	from 110 l/min	29.1 US gal./min
	to 130 l/min	34.3 US gal./min
Dead weight (std.)	8830 kg	19470 lbs

