

**PALFINGER**

LIFETIME EXCELLENCE

HOME

# PK 27002 SH HIGH PERFORMANCE



## MORE COMFORT IN ROPE WINCH OPERATION



The SRC (Synchronised Rope Control) system maintains a constant distance between the pulley head and the hook block. This advantage is particularly valuable in terms of use for the operator, and it also noticeably improves the efficiency of any operation.





LIFETIME EXCELLENCE

HOME

OVERVIEW

FEATURES

VIDEO

ABOUT US

PK 27  
HIGH



PALFINGER AG - 5020 Salzburg, Austria - E-Mail: info@palfinger.com

EVERYTHING UNDER CONTROL.  
THE NEW **PALCOM P7**

When PALFINGER combines its customers' demands and all of the company's expertise into a single product, the outcome can only be revolutionary: The new PALCOM P7, PALFINGER's first in-house development in the field of loader crane remote controls. Ergonomically designed and packed to the hilt with innovative control functions and safety features. This remote control system enables effortless, safe and easy operation.

[WWW.PALFINGER.COM](http://WWW.PALFINGER.COM)

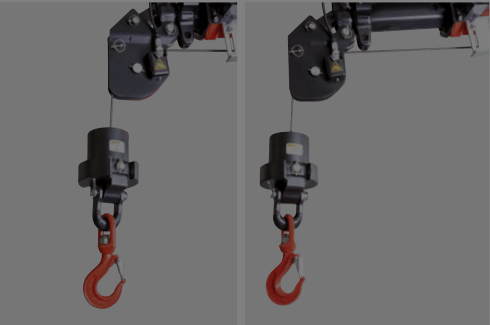


EVERYTHING  
UNDER CONTROL.



→ SHOW MORE

MORE COMFORT IN ROPE  
WINCH OPERATION



The SRC (Synchronised Rope Control) system maintains a constant distance between the pulley head and the hook block. This advantage is particularly valuable in terms of use for the operator, and it also noticeably improves the efficiency of any operation.

# PK 27002 SH HIGH PERFORMANCE



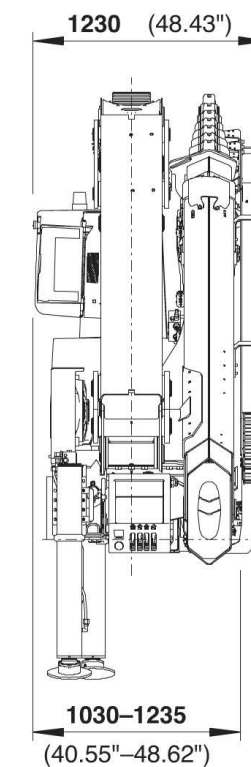
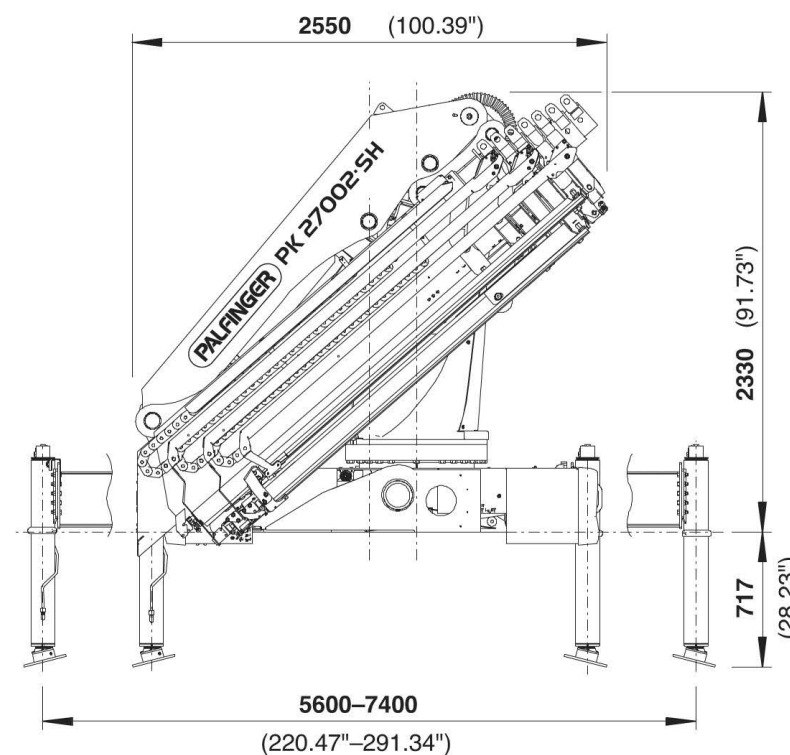
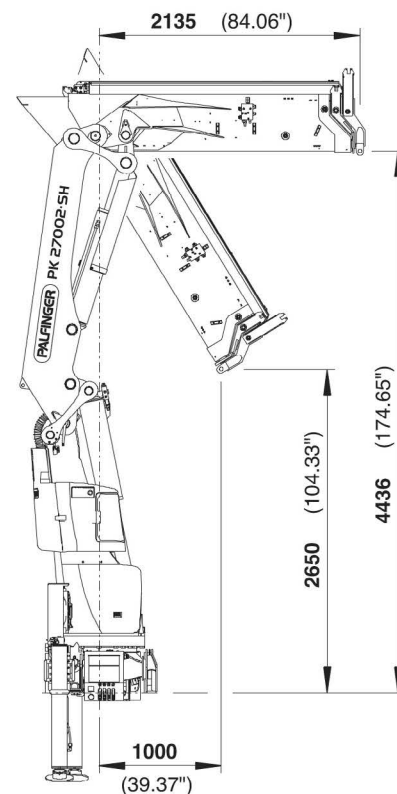
## GENERAL

## TECHNICAL DATA

## APPLICATION

### FUNCTIONAL DESIGN. PROTECTION FOR SENSITIVE COMPONENTS ENHANCES APPEARANCE AND LONG-TERM VALUE RETENTION.

- ➔ More efficient and faster due to continuous slewing system
- ➔ Additional applications due to Power Link Plus
- ➔ Increased operating times due to low-maintenance extension system
- ➔ Higher payloads due to intelligent lightweight design
- ➔ More comfort and safety due to soft stop







LIFETIME EXCELLENCE

OVERVIEW

PK 27002 SH  
HIGH PERFORMANCE



GENERAL	TECHNICAL DATA	APPLICATION
TECHNICAL SPECIFICATIONS (EN 12999 HC1 HD5/B3)		
Max. lifting moment	26.0 mt/255.0 kNm	188060 ft.lbs
Max. lifting capacity	9300 kg/91.2 kN	20500 lbs
Max. hydraulic outreach	21.3 m	69' 11"
Max. manual outreach	23.3 m	76' 5"
Max. outreach (with fly-jib)	29.4 m	96' 5"
Slewing angle	endless	
Slewing torque with 1 gear	2.8 mt/27.5 kNm	20260 ft.lbs
Slewing torque with 2 gears	3.4 mt / 33.4 kNm	24600 ft.lbs
Stabiliser spread standard	5.6 m / 18' 4"	max. 7.4 m / 24' 3"
Fitting space required (std.)	1.01 m	3' 4"
Width folded	2.55 m	8' 4"
Max. operating pressure	365 bar	5293 psi
Recommended pump capacity	from 80 l/min	21.1 US gal./min
	to 110 l/min	29.1 US gal./min
Dead weight (std.)	2679 kg	5910 lbs
C	D	E
G	C PJ080C JV2 DPS PLUS	E PJ060B JV2 DPS PLUS





LIFETIME EXCELLENCE

HOME

OVERVIEW

FEATURES

VIDEO

ABOUT US

PK 270  
HIGH

GENERAL

TECHNICAL DATA

Max. lifting mo

Max. lifting cap

Max. hydraulic

Max. manual o

Max. outreach

Slewing angle

Slewing torque

Slewing torque

Stabiliser spre

Fitting space r

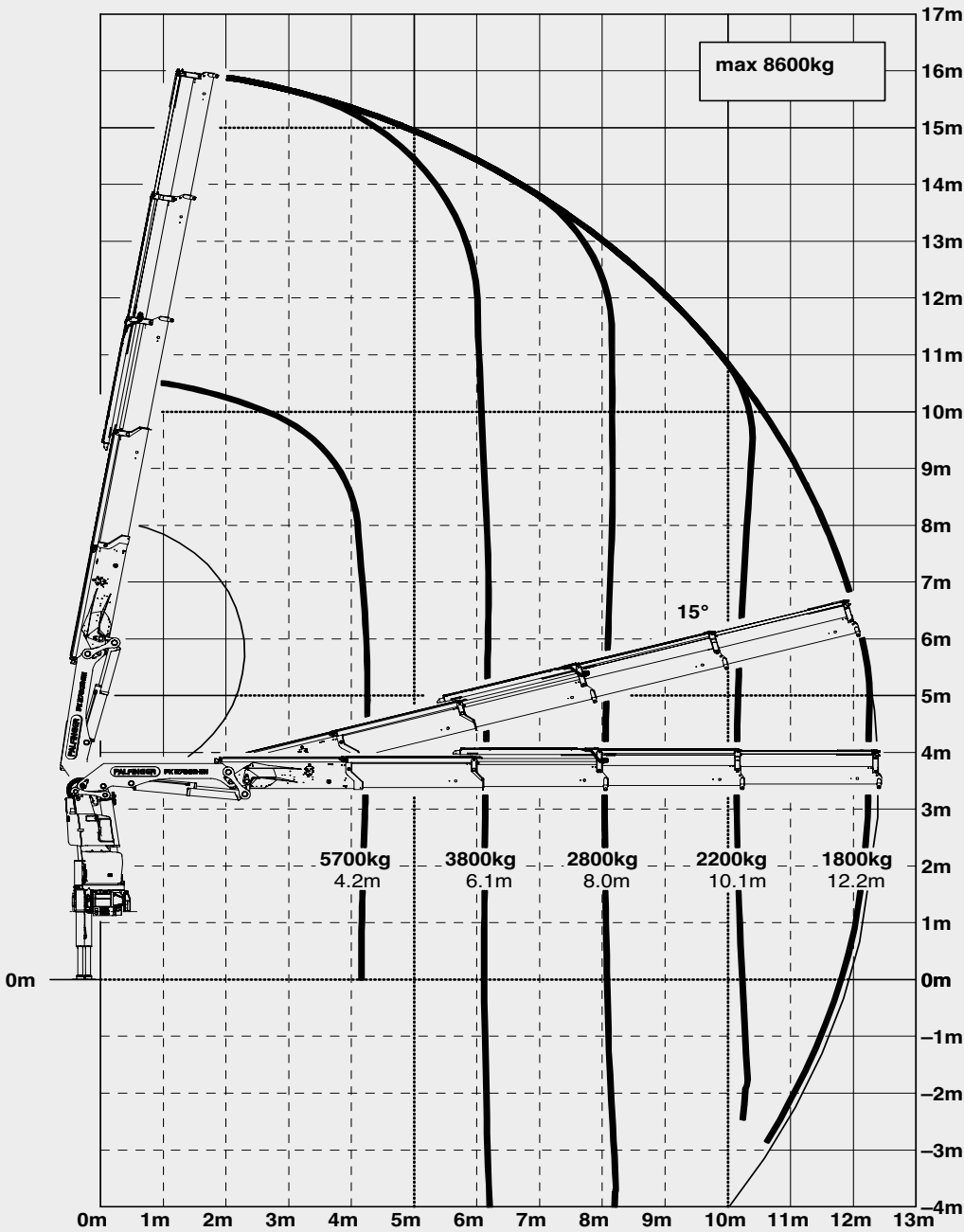
Width folded

Max. operating

Recommended

Dead weight (s

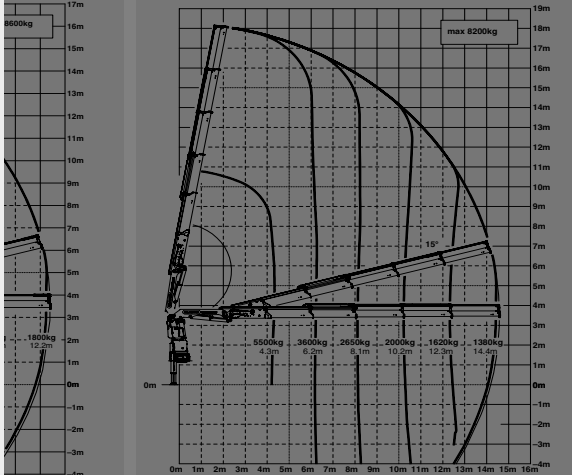
C



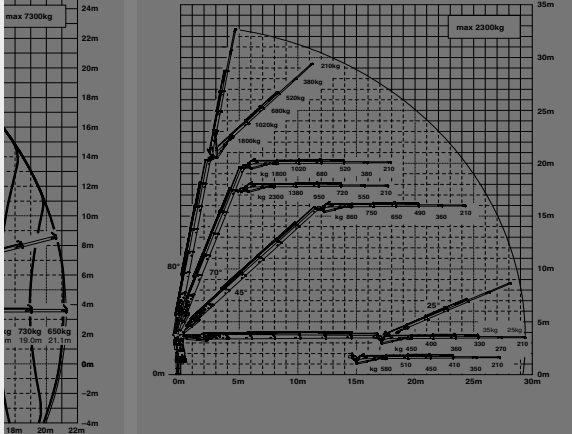
max.		8600 kg	18950 lbs
4.2 m	13' 9"	5700 kg	13600 lbs
6.1 m	20' 0"	3800 kg	8400 lbs
8.0 m	26' 3"	2800 kg	6200 lbs
10.1 m	33' 2"	2200 kg	4800 lbs
12.2 m	40' 0"	1800 kg	3950 lbs
14.4 m*	47' 3"	1460 kg	3200 lbs
16.6 m*	54' 6"	1180 kg	2600 lbs



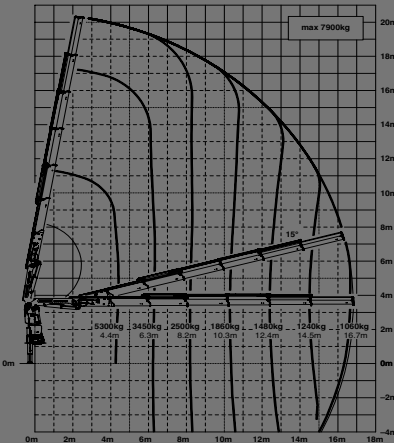
D



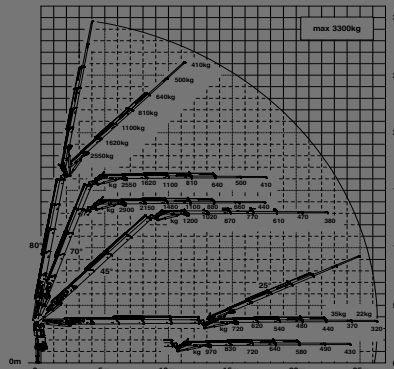
C PJ080C JV2 DPS PLUS



E



E PJ060B JV2 DPS PLUS







LIFETIME EXCELLENCE

HOME

OVERVIEW

FEATURES

VIDEO

ABOUT US

PK 270  
HIGH

GENERAL

TECHNICAL DATA

Max. lifting mo

Max. lifting cap

Max. hydraulic

Max. manual o

Max. outreach

Slewing angle

Slewing torque

Slewing torque

Stabiliser spre

Fitting space r

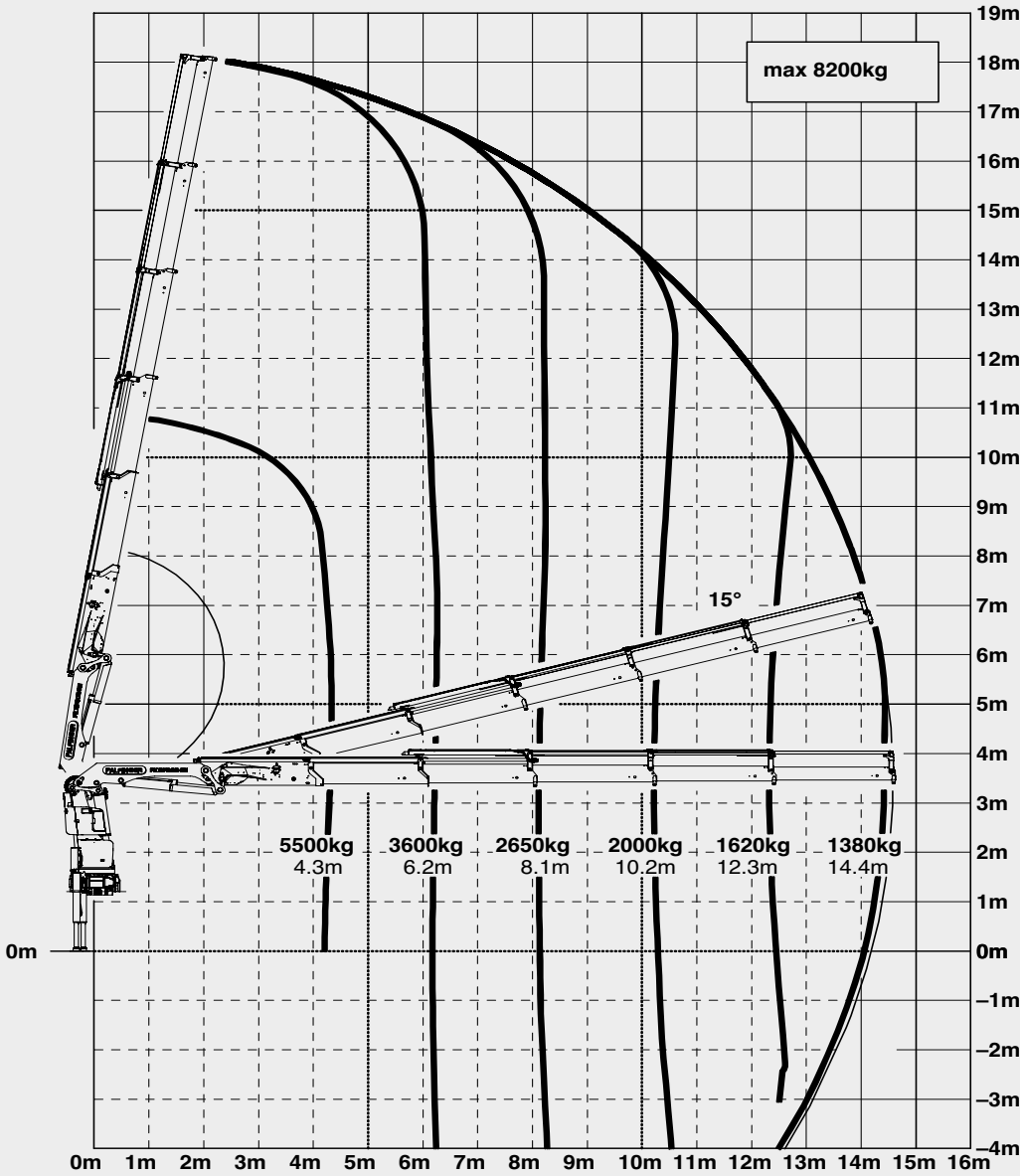
Width folded

Max. operating

Recommended

Dead weight (s

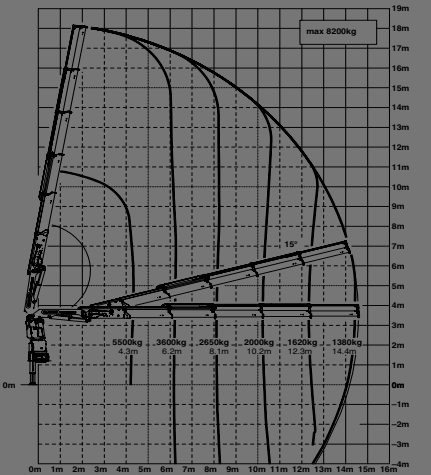
D



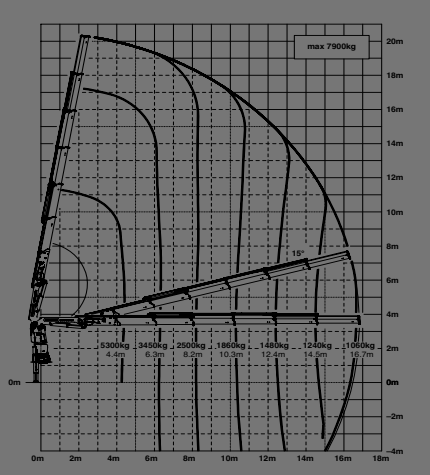
max.		8200 kg	18070 lbs
4.3 m	14' 1"	5500 kg	12100 lbs
6.2 m	20' 4"	3600 kg	8000 lbs
8.1 m	26' 7"	2650 kg	5800 lbs
10.2 m	33' 6"	2000 kg	4450 lbs
12.3 m	40' 4"	1620 kg	3600 lbs
14.4 m	47' 3"	1380 kg	3050 lbs
16.7 m*	54' 9"	1120 kg	2450 lbs
18.8 m*	61' 8"	930 kg	2050 lbs



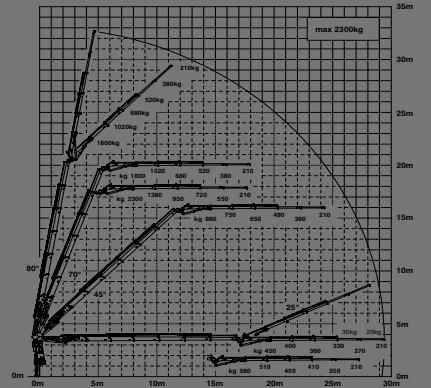
D



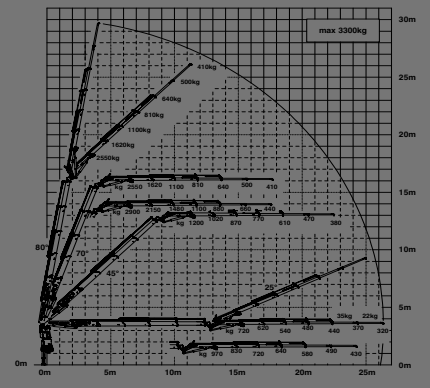
E



C PJ080C JV2 DPS PLUS



E PJ060B JV2 DPS PLUS







LIFETIME EXCELLENCE

HOME

OVERVIEW

FEATURES

VIDEO

ABOUT US

PK 270  
HIGH

GENERAL

TECHNICAL DATA

Max. lifting mo

Max. lifting cap

Max. hydraulic

Max. manual o

Max. outreach

Slewing angle

Slewing torque

Slewing torque

Stabiliser spre

Fitting space r

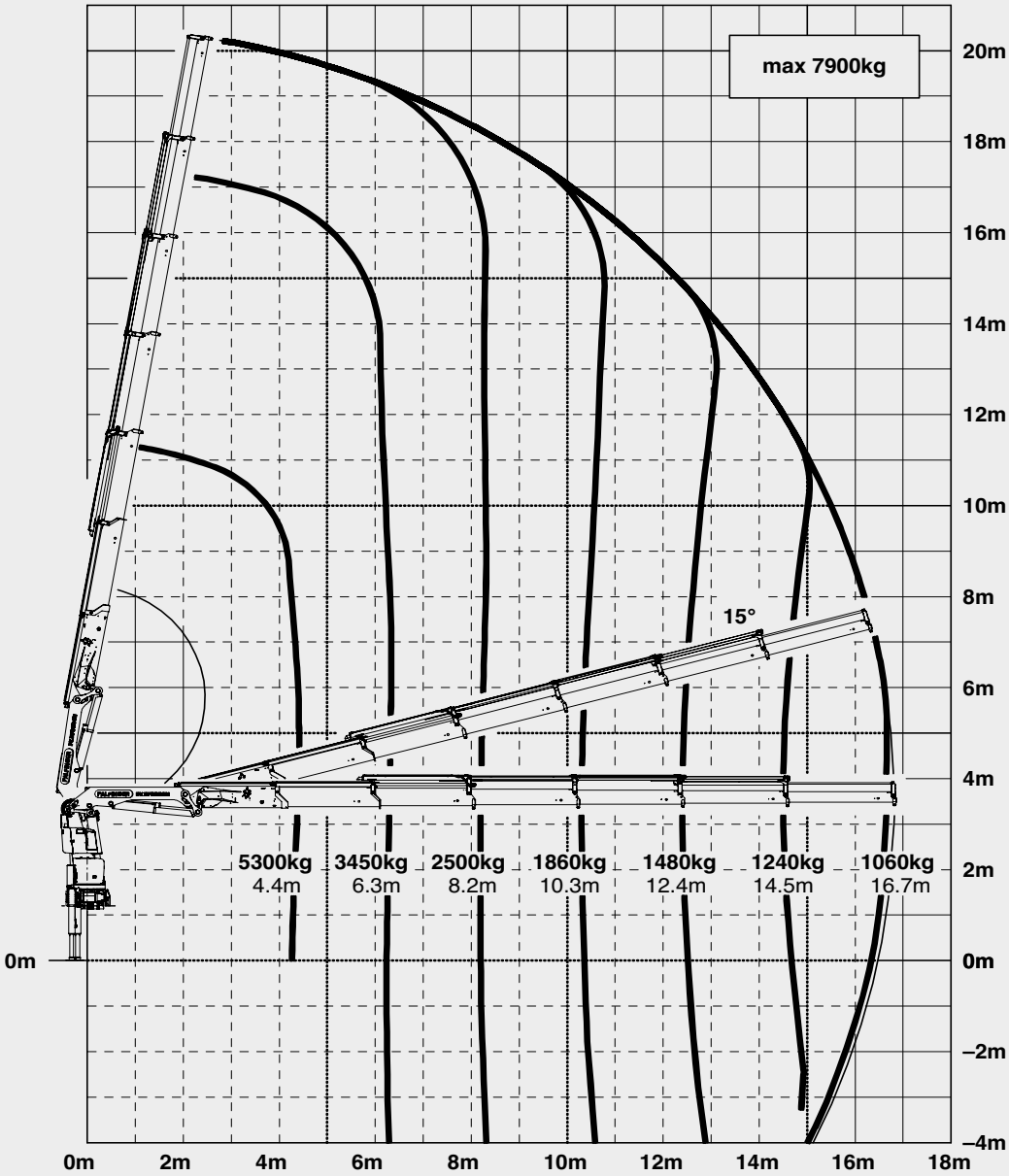
Width folded

Max. operating

Recommended

Dead weight (s

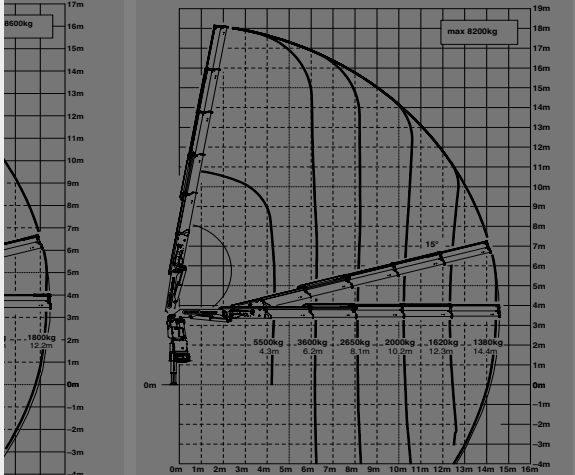
E



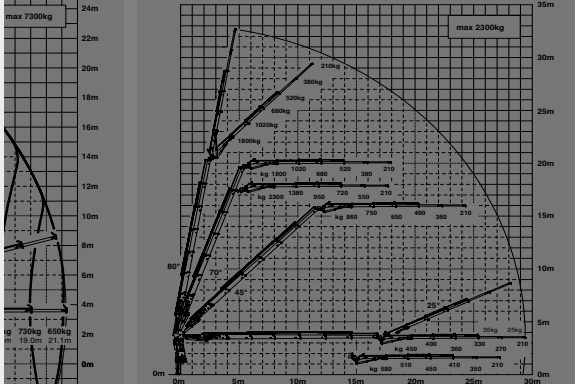
max.		7900 kg	17400 lbs
4.4 m	14' 5"	5300 kg	11600 lbs
6.3 m	20' 8"	3450 kg	7600 lbs
8.2 m	26' 11"	2500 kg	5500 lbs
10.3 m	33' 10"	1860 kg	4100 lbs
12.4 m	40' 8"	1480 kg	3250 lbs
14.5 m	47' 7"	1240 kg	2700 lbs
16.7 m	54' 9"	1060 kg	2350 lbs
18.8 m*	61' 8"	880 kg	1940 lbs
21.0 m*	68' 11"	740 kg	1640 lbs



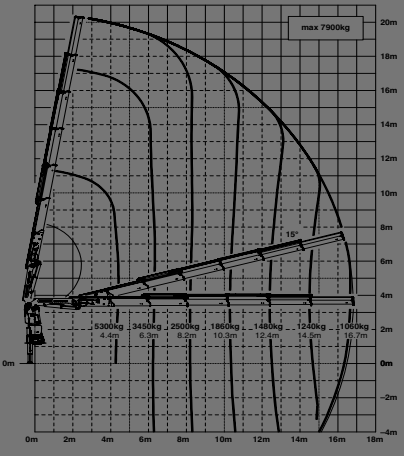
D



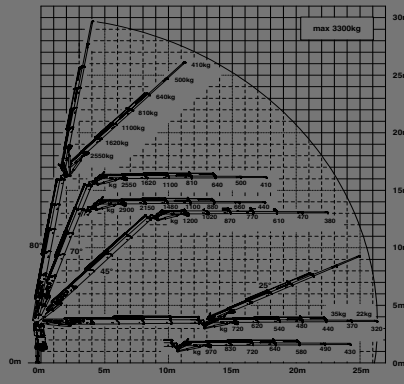
C PJ080C JV2 DPS PLUS



E



E PJ060B JV2 DPS PLUS





# PK 270 HIGH

## GENERAL

# TECHNICA

Max. lifting mo

Max. lifting cap

Max. hydraulic

Max. manual o

Max. outreach

Slewing angle

Slewing torque

Slewing torque

Stabiliser spre

Fitting space r

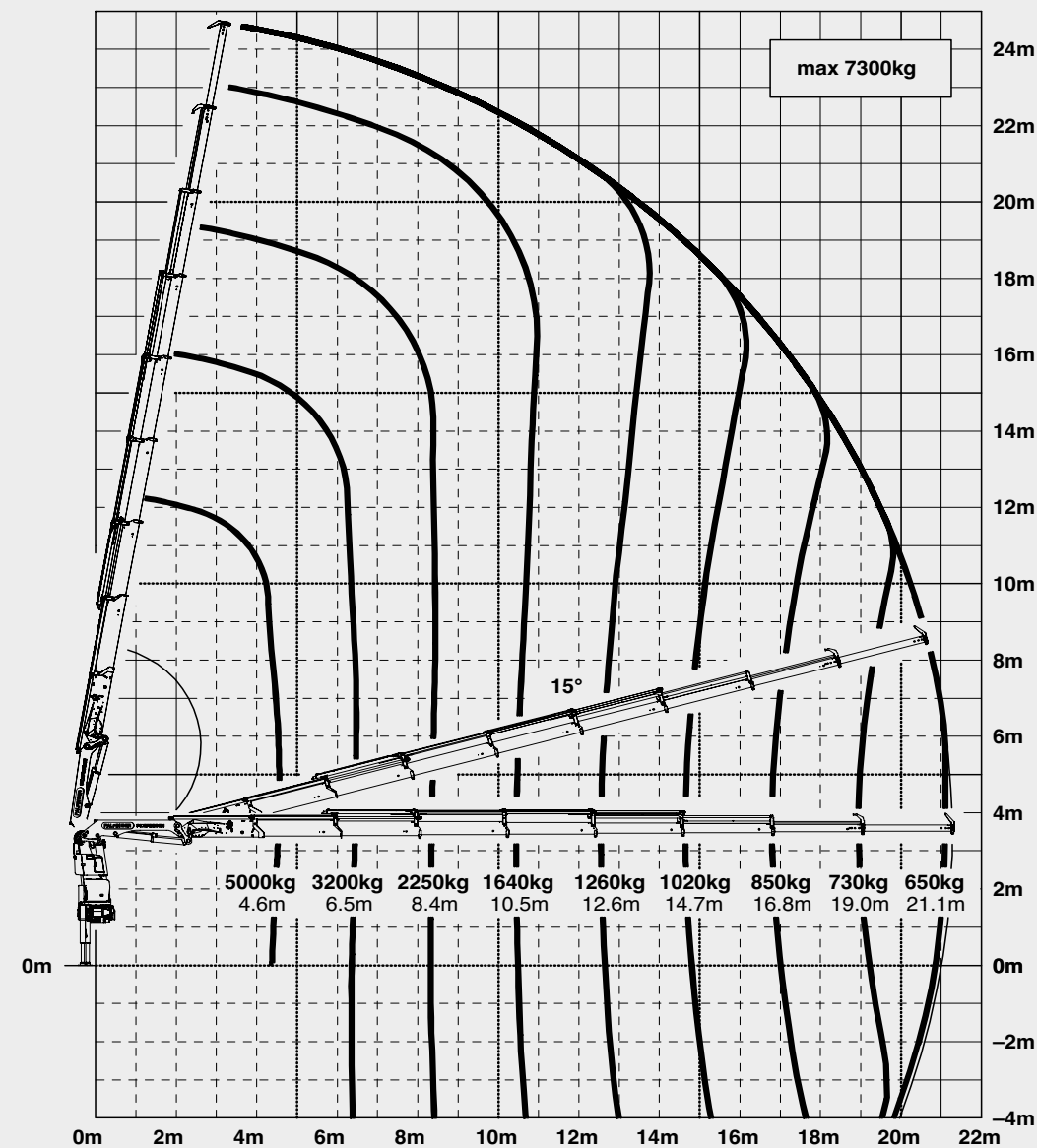
Width folded

Max. operating

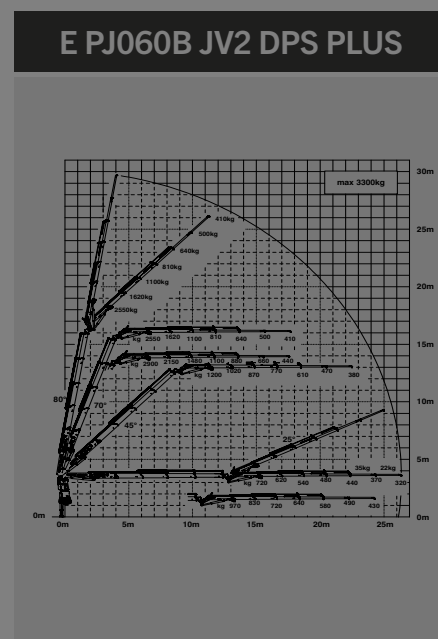
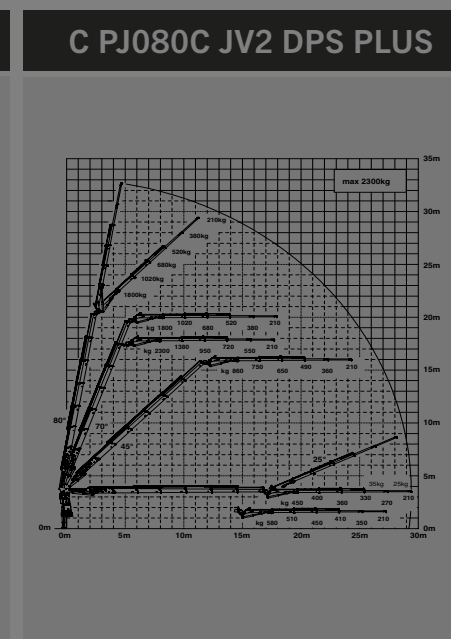
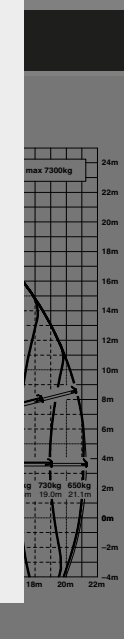
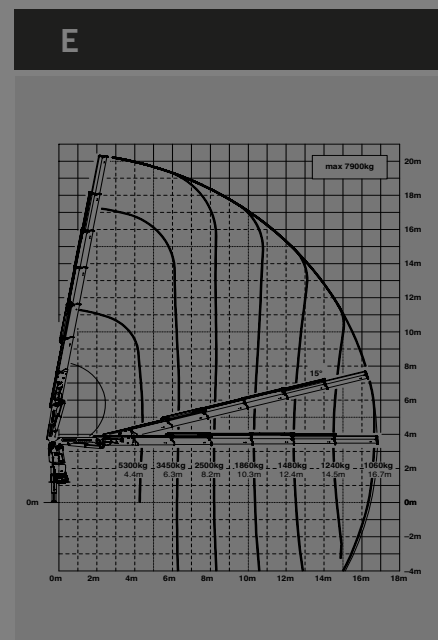
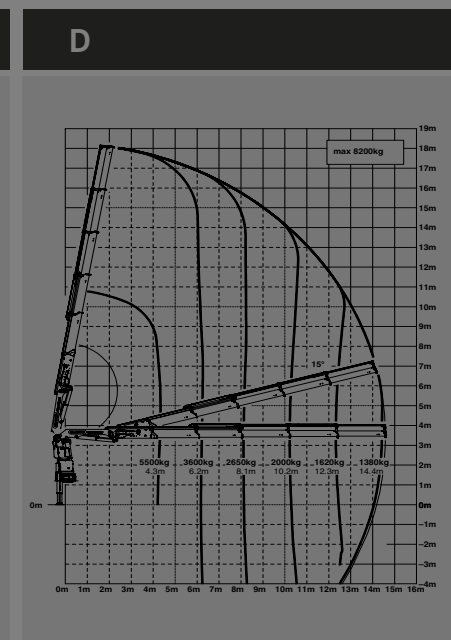
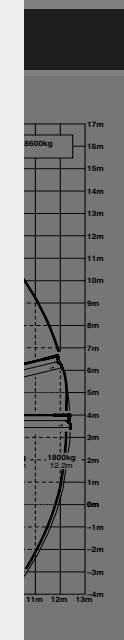
Recommended

10. *Journal of the American Medical Association*, 2000; 283: 2686-2692.

Dead weight (s



max.		7300 kg	16090 lbs
4.6 m	15' 1"	4900 kg	10900 lbs
6.5 m	21' 4"	3200 kg	7000 lbs
8.4 m	27' 7"	2250 kg	5000 lbs
10.5 m	34' 5"	1640 kg	3600 lbs
12.6 m	41' 4"	1260 kg	2800 lbs
14.7 m	48' 3"	1020 kg	2250 lbs
16.8 m	55' 1"	850 kg	1860 lbs
19.0 m	62' 4"	730 kg	1600 lbs
21.1 m	69' 3"	650 kg	1420 lbs
23.1 m*	75' 9"	560 kg	1240 lbs







LIFETIME EXCELLENCE

HOME

OVERVIEW

FEATURES

VIDEO

ABOUT US

# PK 270 HIGH C PJ080C JV2 DPS PLUS

## GENERAL

## TECHNICAL DATA

Max. lifting mo

Max. lifting cap

Max. hydraulic

Max. manual o

Max. outreach

Slewing angle

Slewing torque

Slewing torque

Stabiliser spre

Fitting space r

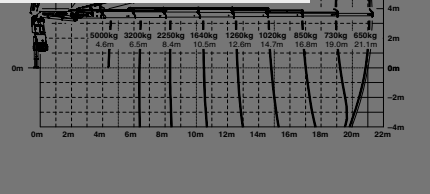
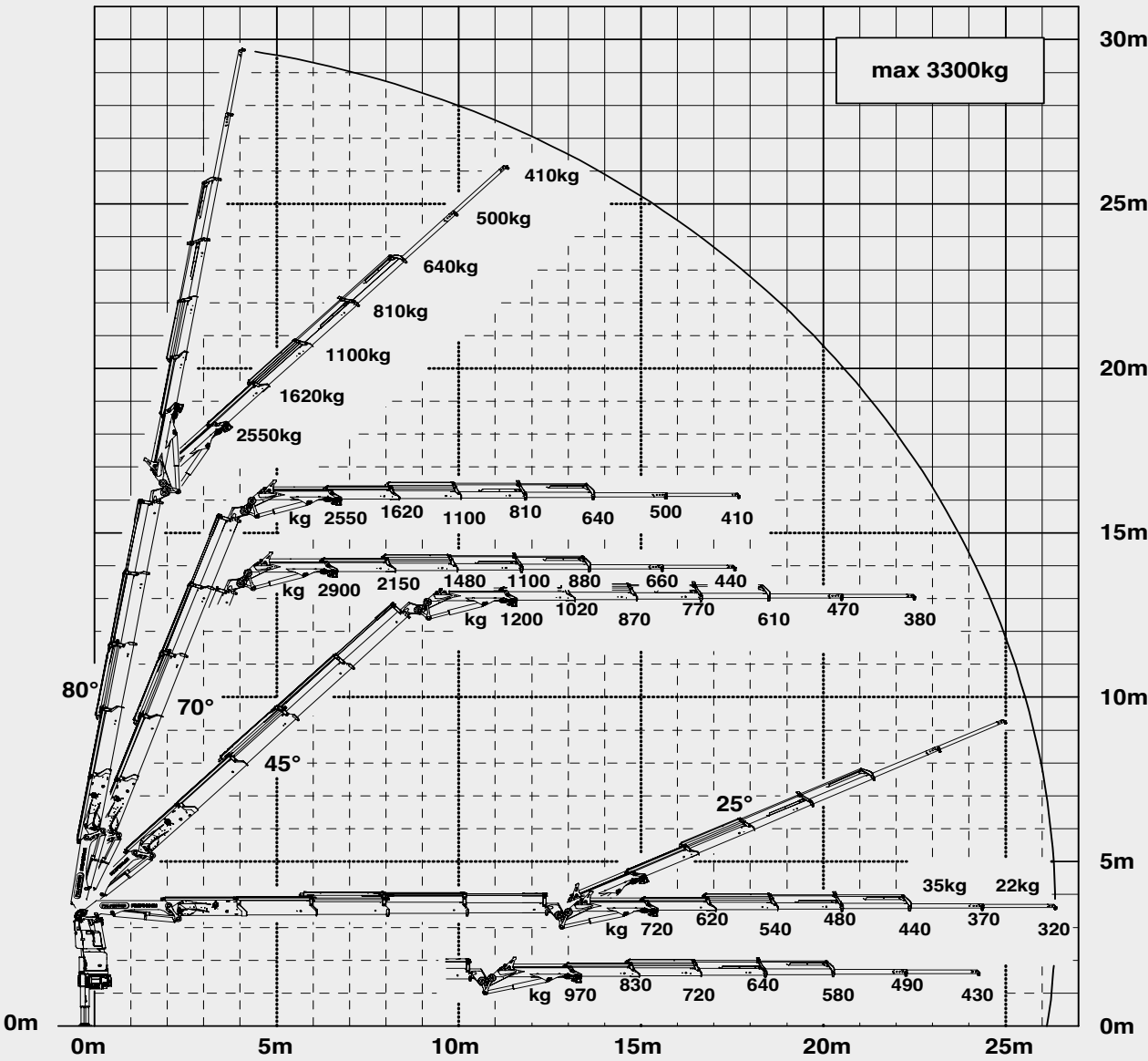
Width folded

Max. operating

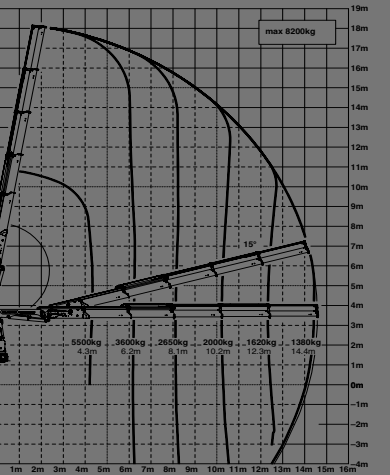
Recommended

Dead weight (s

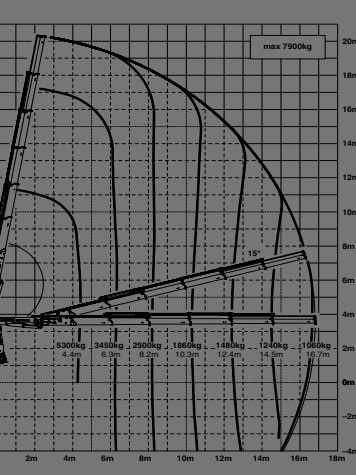
# C PJ080C JV2 DPS PLUS



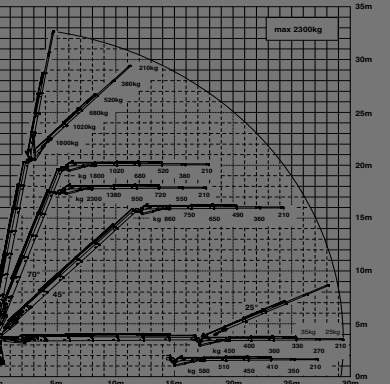
D



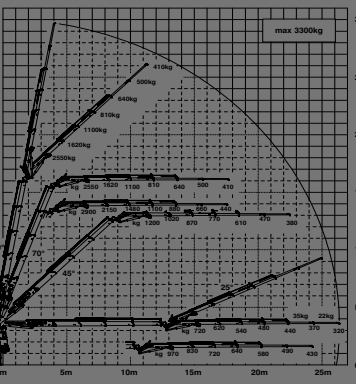
E



C PJ080C JV2 DPS PLUS



E PJ060B JV2 DPS PLUS





LIFETIME EXCELLENCE

HOME

OVERVIEW

FEATURES

VIDEO

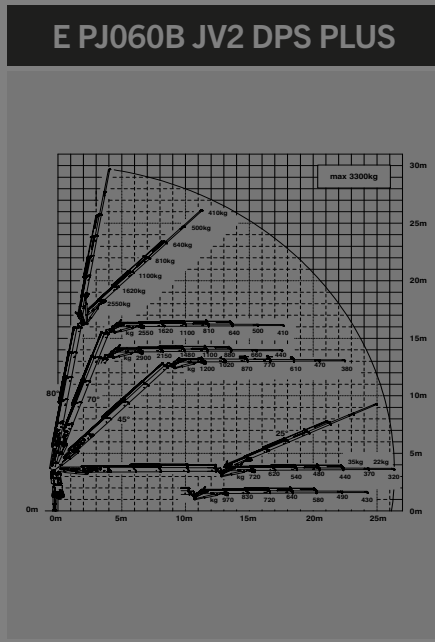
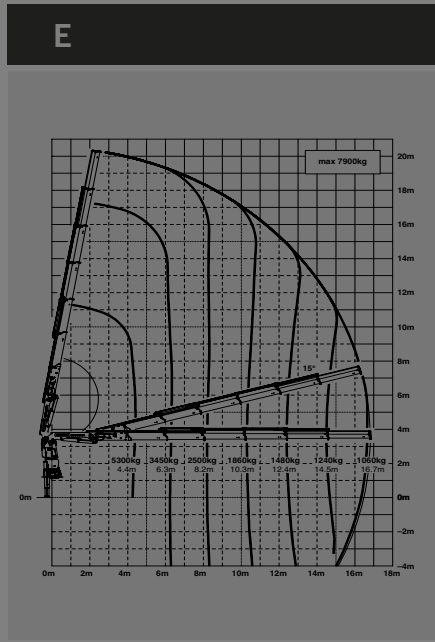
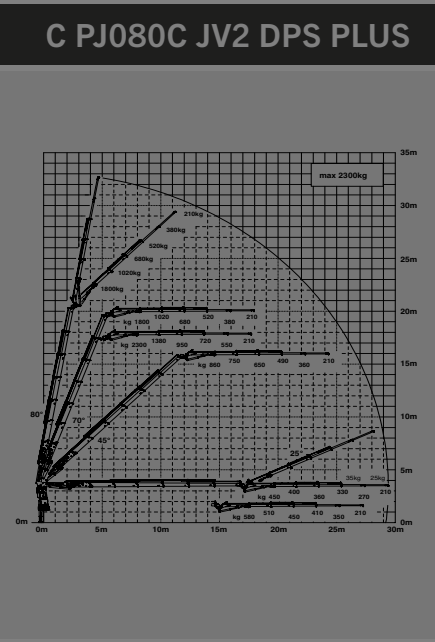
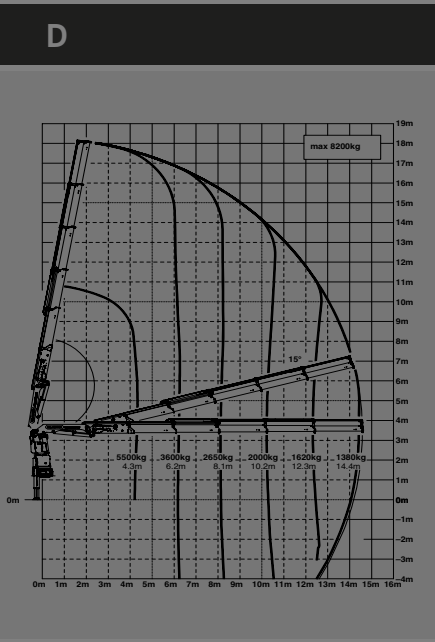
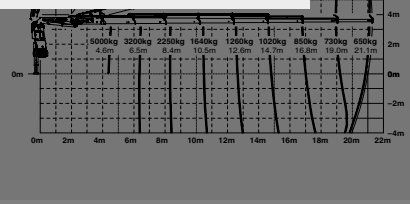
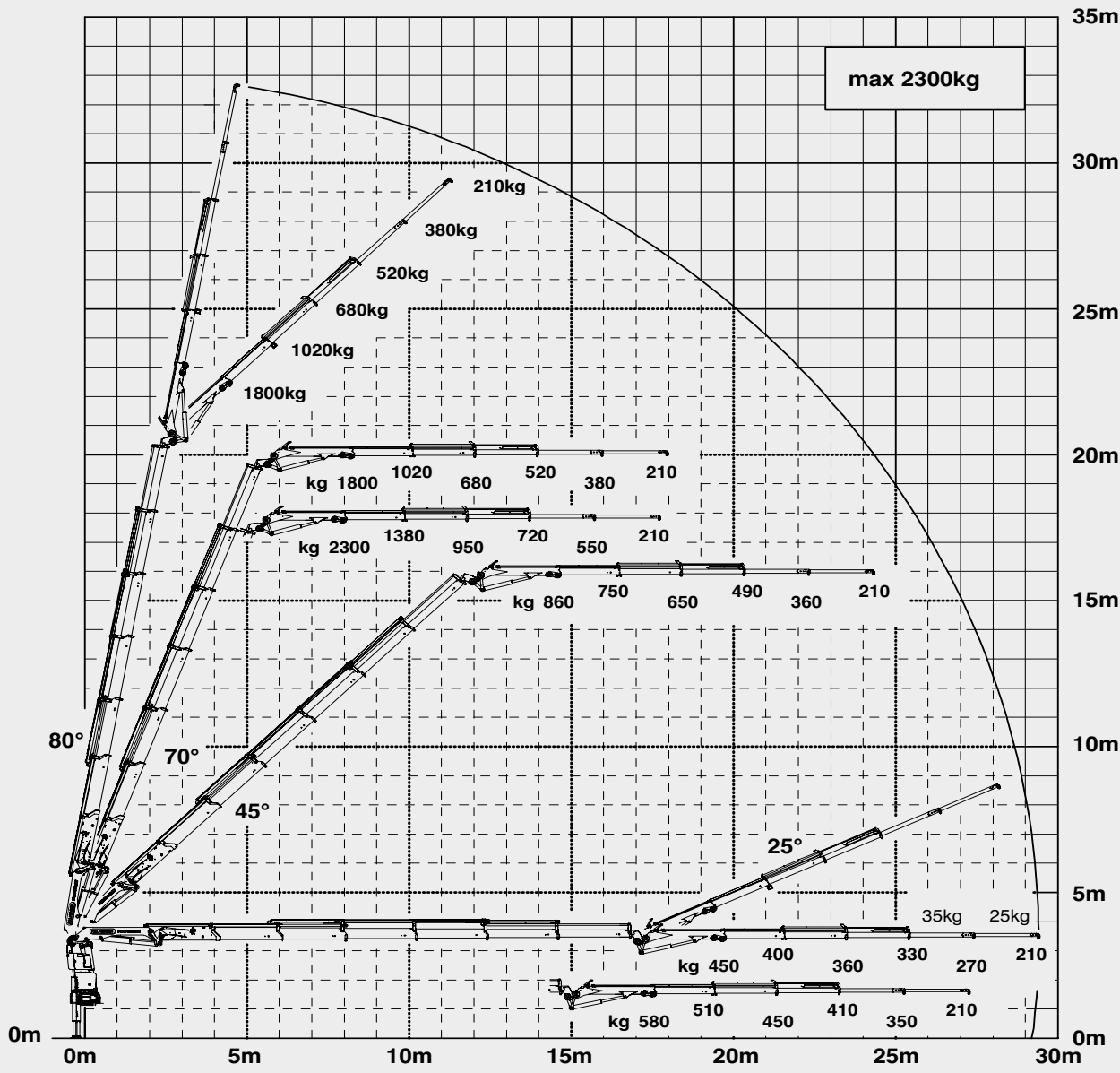
ABOUT US

# PK 270 HIGH E PJ060B JV2 DPS PLUS

## GENERAL

## TECHNICAL DATA

- Max. lifting mo
- Max. lifting cap
- Max. hydraulic
- Max. manual o
- Max. outreach
- Slewing angle
- Slewing torque
- Slewing torque
- Stabiliser spre
- Fitting space r
- Width folded
- Max. operating
- Recommended
- Dead weight (s







LIFETIME EXCELLENCE

OVERVIEW

# PK 27002 SH

## HIGH PERFORMANCE



GENERAL	TECHNICAL DATA	APPLICATION	
---------	----------------	-------------	--



LIFETIME EXCELLENCE

# PK 27002 SH HIGH PERFORMANCE



## FEATURES



KTL

protected

Paltronic 150

controlled

RRC

Radio Remote Control

operated

HPSC

High Performance Stability Control

monitored

AOS

Active Oscillation Suppression

inside

DPS plus

Dual Power System

activated





LIFETIME EXCELLENCE

HOME

OVERVIEW

FEATURES

VIDEO

ABOUT US

# PK 27002 SH

## HIGH PERFORMANCE



**LOW-MAINTENANCE EXTENSION SYSTEM**  
REDUCES SERVICE TIME

With sliding elements made of synthetic material and the high-quality KTL coating, this boom system significantly simplifies service performed by the operator. This saves time and money – and protects the environment.

KTL

protected

Paltronic 150

controlled

RRC

Radio Remote Control

operated

HPSC

High Performance Stability Control

monitored

AOS

Active Oscillation Suppression

inside

DPS plus

Dual Power System

activated

CONTINUOUS SLEWING SYSTEM



LIFETIME EXCELLENCE

HOME

OVERVIEW

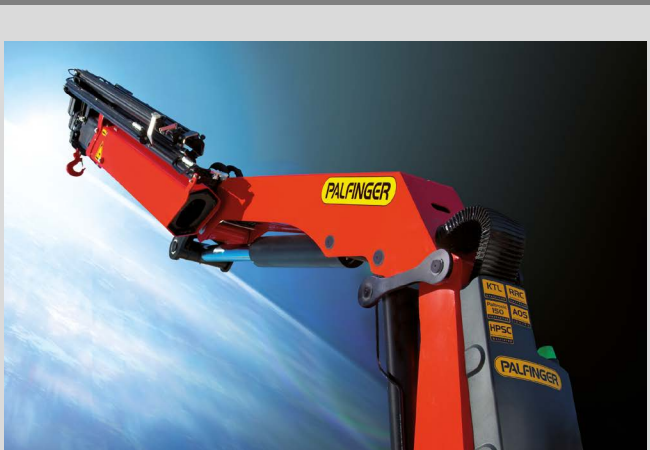
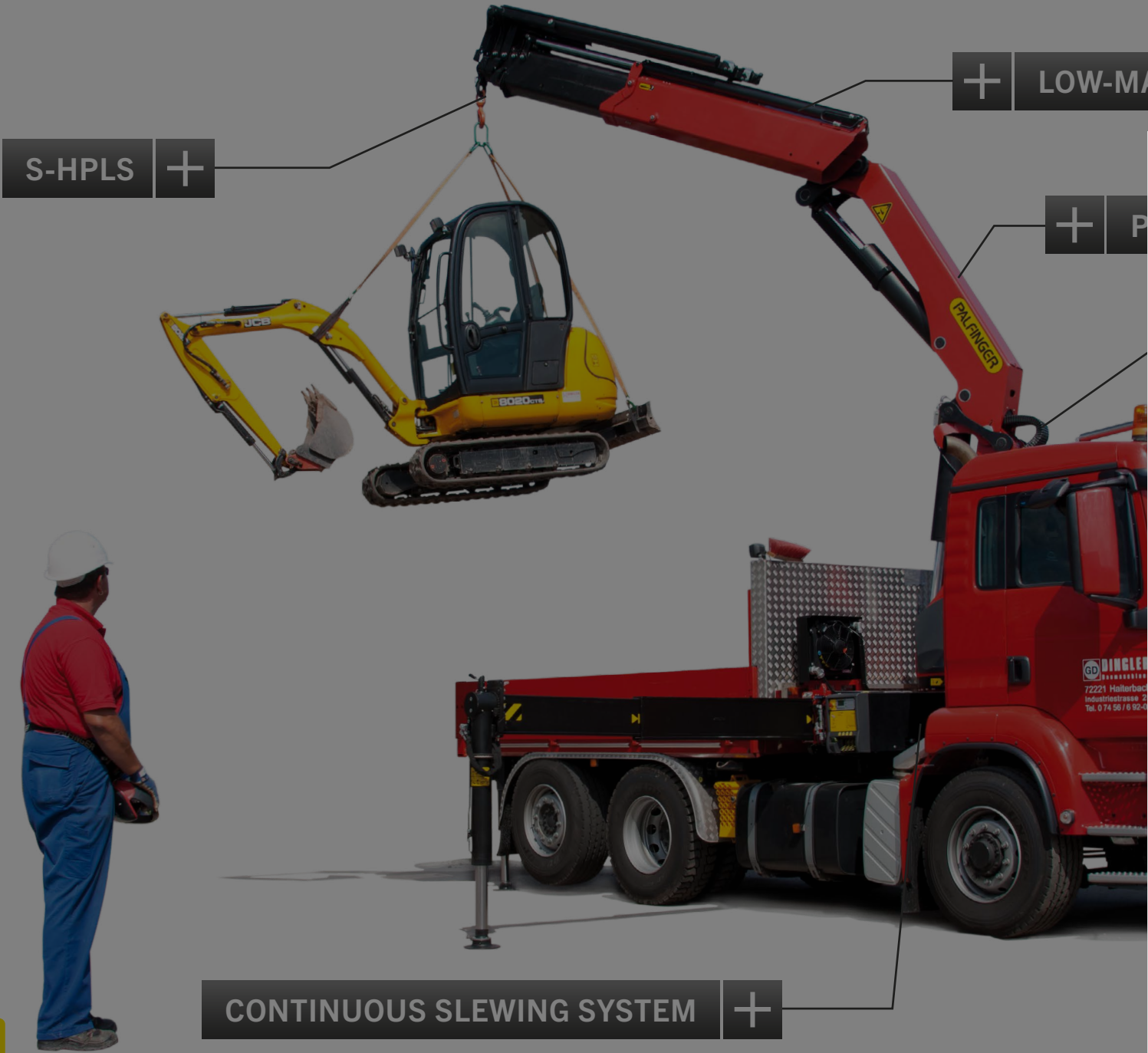
FEATURES

VIDEO

ABOUT US

# PK 27002 SH

## HIGH PERFORMANCE



### POWER LINK PLUS

HIGH VARIETY OF USES

With the 15-degree reverse linkage system, you can reach through low door openings and also work inside buildings. Heavy crane work – even in difficult conditions.

KTL

protected

Paltronic 150

controlled

RRC

Radio Remote Control

operated

HPSC

High Performance Stability Control

monitored

AOS

Active Oscillation Suppression

inside

DPS plus

Dual Power System

activated





LIFETIME EXCELLENCE

HOME

OVERVIEW

FEATURES

VIDEO

ABOUT US

# PK 27002 SH

## HIGH PERFORMANCE



### CONTINUOUS SLEWING SYSTEM

#### UNRESTRICTED MOVEMENT

More efficient in operation due to faster loading cycles, since the crane can be slewed over a shorter distance. The crane works more efficiently and faster.

KTLPALFINGER

protected

Paltronic150

controlled

RRC

Radio Remote Controloperated

HPSC

High Performance Stability Controlmonitored

AOS

Active Oscillation Suppressioninside

DPSplus

Dual Power Systemactivated



LIFETIME EXCELLENCE

HOME

OVERVIEW

FEATURES

VIDEO

ABOUT US

# PK 27002 SH

## HIGH PERFORMANCE



### SOFT STOP FUNCTION

MORE COMFORT AND SAFETY

The Soft Stop function is an electronic limit position damper. It causes gentle braking of all crane movements before the limit position is reached. Hence, jerky movements and load impacts can be avoided. The crane can be operated more gently and precisely.

KTL

protected

Paltronic 150

controlled

RRC

Radio Remote Control

operated

HPSC

High Performance Stability Control

monitored

AOS

Active Oscillation Suppression

inside

DPS plus

Dual Power System

activated

CONTINUOUS SLEWING SYSTEM





LIFETIME EXCELLENCE

HOME

OVERVIEW

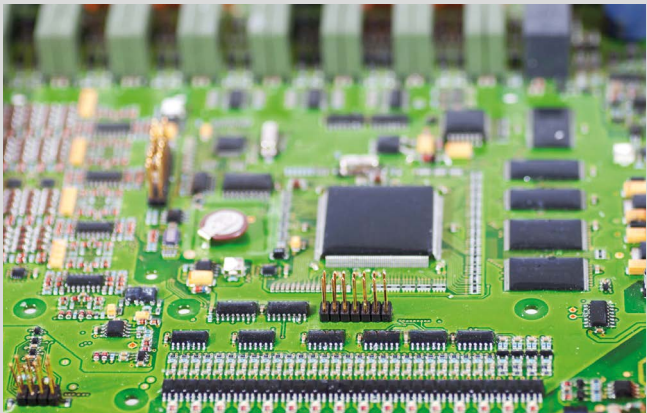
FEATURES

VIDEO

ABOUT US

# PK 27002 SH

## HIGH PERFORMANCE



**S-HPLS**  
MORE LIFTING POWER WHEN IT IS REALLY NEEDED

S-HPLS is one of the most important functions of the PALTRONIC 150. It is a fully automatic system for increasing the lifting power. Depending on the need, there is continuous adaptation of the lifting power and speed of the crane.

KTLPALTRONIC 150RRC

protectedcontrolledoperated

HPSCAOSDPS plus

High Performance Stability ControlActive Oscillation SuppressionDual Power System

monitoredinsideactivated



LIFETIME EXCELLENCE

# PK 27002 SH HIGH PERFORMANCE



ABOUT US

TO US, “LIFETIME EXCELLENCE”  
MEANS SEEING TOP PERFORMANCE  
AS A MINIMUM REQUIREMENT.

LIFETIME EXCELLENCE is our promise. Our core message.  
Our brand essence. To our customers, it means top performance  
without compromise. The most cost-effective, reliable and innovative  
lifting solutions in a global network of expert service partners  
– for the entire product lifetime.

EXCELLENCE  
ECONOMY &  
EFFICIENCY

PERFORMANCE

EXCELLENCE  
INNOVATION &  
FLEXIBILITY

SERVICE

EXCELLENCE  
SERVICE &  
LOCATIONS

SUPPORT

EXPERTISE

SAFETY

EXCELLENCE  
RELIABILITY &  
EXPERTISE

PLAY VIDEO