



LIFETIME EXCELLENCE

HOME

PK 53002 SH HIGH PERFORMANCE





LIFETIME EXCELLENCE

HOME

OVERVIEW

FEATURES

VIDEO

ABOUT US

PK 53
HIGH



PALFINGER AG - 5020 Salzburg, Austria - E-Mail: info@palfinger.com

EVERYTHING UNDER CONTROL. THE NEW PALCOM P7

When PALFINGER combines its customers' demands and all of the company's expertise into a single product, the outcome can only be revolutionary: The new PALCOM P7, PALFINGER's first in-house development in the field of loader crane remote controls. Ergonomically designed and packed to the hilt with innovative control functions and safety features. This remote control system enables effortless, safe and easy operation.

WWW.PALFINGER.COM



LIFETIME EXCELLENCE



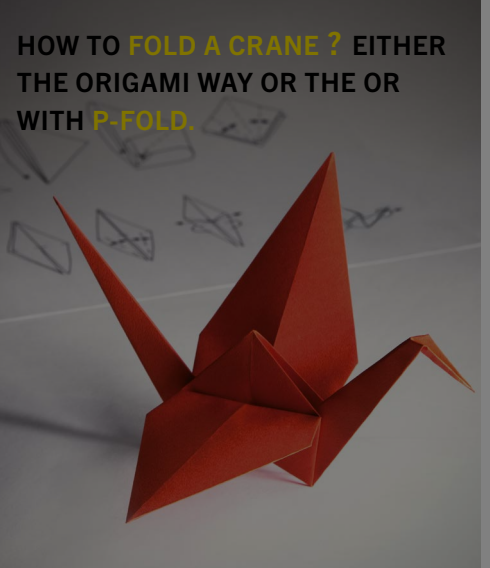
EVERYTHING
UNDER CONTROL.



THE NEW PALCOM P7

→ SHOW MORE

P-FOLD



→ SHOW MORE



LIFETIME EXCELLENCE

HOME

OVERVIEW

FEATURES

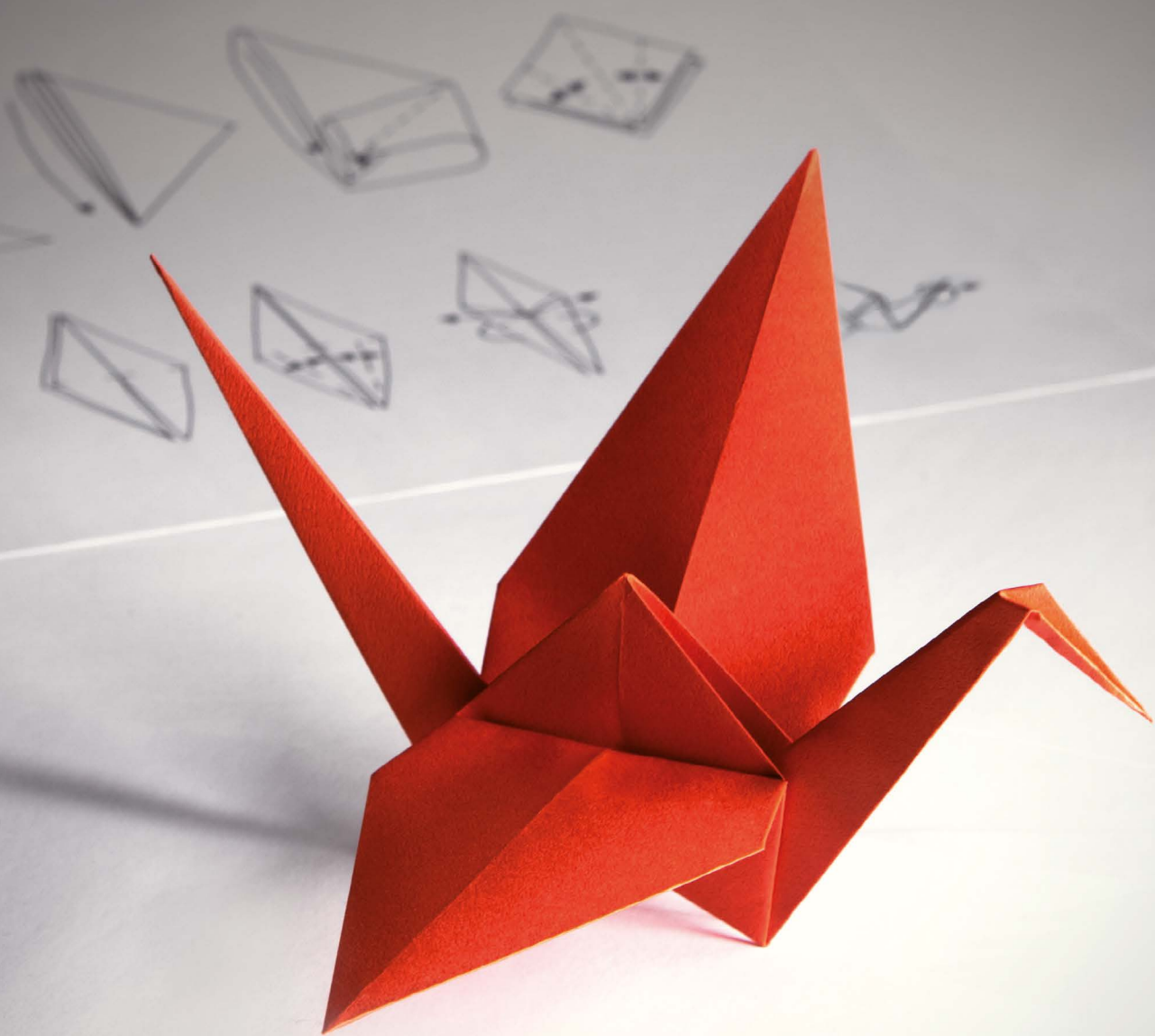
VIDEO

ABOUT US

PK 53
HIGH



HOW TO **FOLD A CRANE?**
EITHER THE ORIGAMI WAY
OR WITH **P-FOLD.**



Palfinger AG · 5020 Salzburg, Austria · E-Mail: info@palfinger.com

PERFECTLY FOLDED BY FINGERTIP CONTROL

The new assistance system P-Fold makes folding and unfolding an easy job for the crane operator. All movements of the crane are activated by only one control lever. This significantly increases operator comfort and prevents costly damage.

WWW.PALFINGER.COM

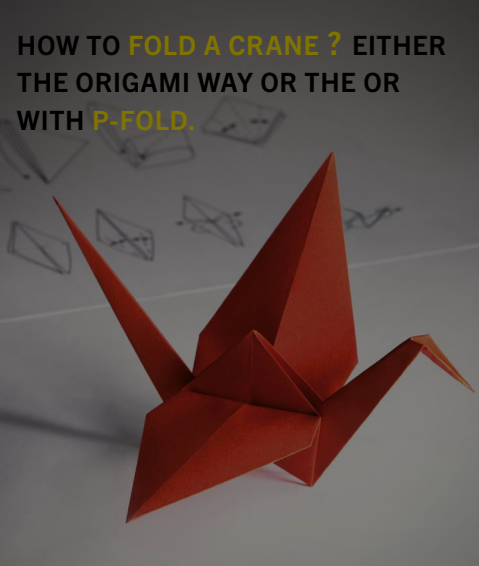


EVERYTHING
UNDER CONTROL.



→ SHOW MORE

P-FOLD



→ SHOW MORE

PK 53002 SH HIGH PERFORMANCE



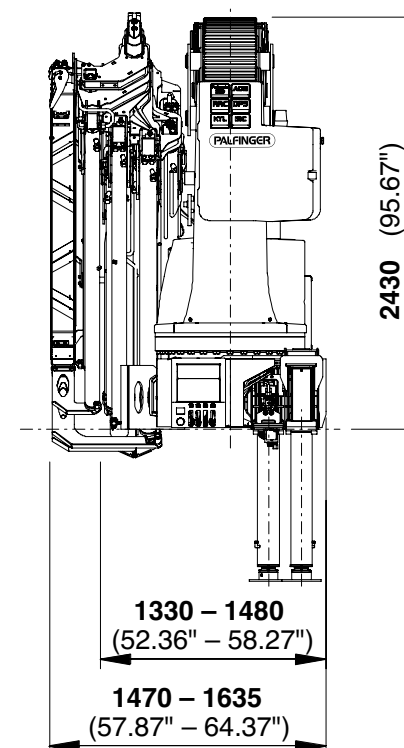
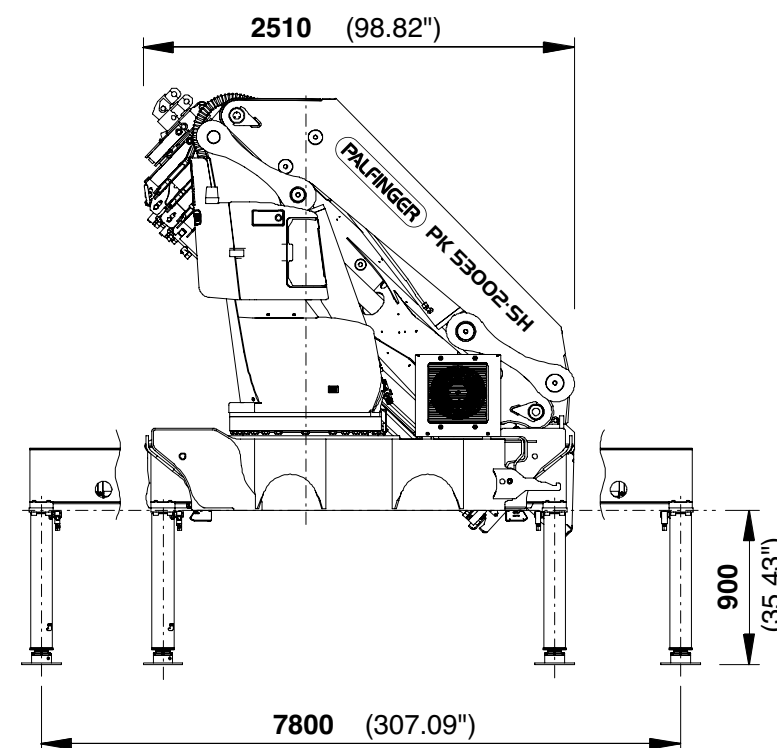
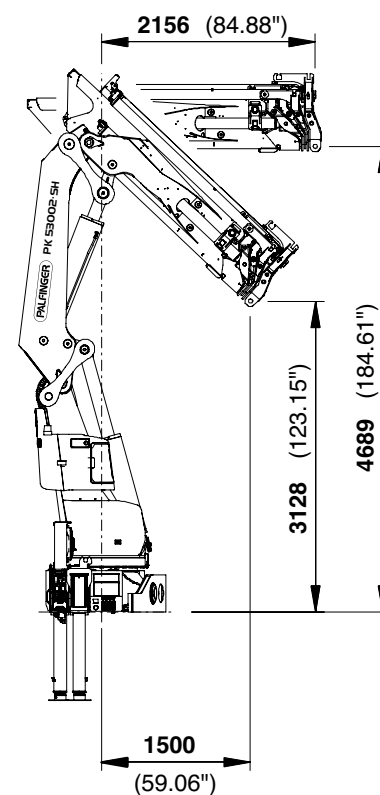
GENERAL

TECHNICAL DATA

APPLICATION

OPERATOR FRIENDLY AND SENSITIVE CONTROLLABLE. IMPRESSIVE ATTRIBUTES FOR DELICATE OPERATIONS.

- ➔ Increased comfort and safety due to soft stop
- ➔ Maximum utilisation of the working range due to HPSC
- ➔ More lifting power due to S-HPLS
- ➔ Continuous slewing for increased efficiency and speed
- ➔ Additional applications with Power Link Plus





LIFETIME EXCELLENCE

OVERVIEW

PK 53002 SH
HIGH PERFORMANCE



| GENERAL | TECHNICAL DATA | APPLICATION |
|--|-----------------------|---|
| TECHNICAL SPECIFICATIONS (EN 12999 HC1 HD5/B3) | | |
| Max. lifting moment | 50.1 mt/491.5 kNm | 362480 ft.lbs |
| Max. lifting capacity | 18200 kg/178.5 kN | 40120 lbs |
| Max. hydraulic outreach | 21.0 m | 68' 11" |
| Max. manual outreach | 25.2 m | 82' 8" |
| Max. outreach (with fly-jib) | 32.5 m | 106' 8" |
| Slewing angle | continuously variable | |
| Slewing torque with 1 gear | 4.0 mt/39.2 kNm | 28940 ft.lbs |
| Slewing torque with 2 gears | 5.5 mt / 54.0 kNm | 39790 ft.lbs |
| Stabiliser spread | 7.8 m | 25' 7" |
| Fitting space required (std.) | min. 1.33 m/4' 4" | min. 1.47 m/4' 10" |
| Width folded | 2.51 m | 8' 3" |
| Max. operating pressure | 365 bar | 5293 psi |
| Recommended pump capacity | from 90 l/min | 23.8 US gal./min |
| | to 120 l/min | 31.7 US gal./min |
| Dead weight (std.) | 4145 kg | 9140 lbs |
| | | <div><div>B</div><div>E</div><div>F</div><div>G</div><div>E PJ125E JV1 DPS PLUS</div><div>F PJ080C JV2 DPS PLUS</div></div> |



LIFETIME EXCELLENCE

HOME

OVERVIEW

FEATURES

VIDEO

ABOUT US

PK 53
HIGH

GENERAL

TECHNICAL DATA

Max. lifting mo

Max. lifting cap

Max. hydraulic

Max. manual o

Max. outreach

Slewing angle

Slewing torque

Slewing torque

Stabiliser spre

Fitting space r

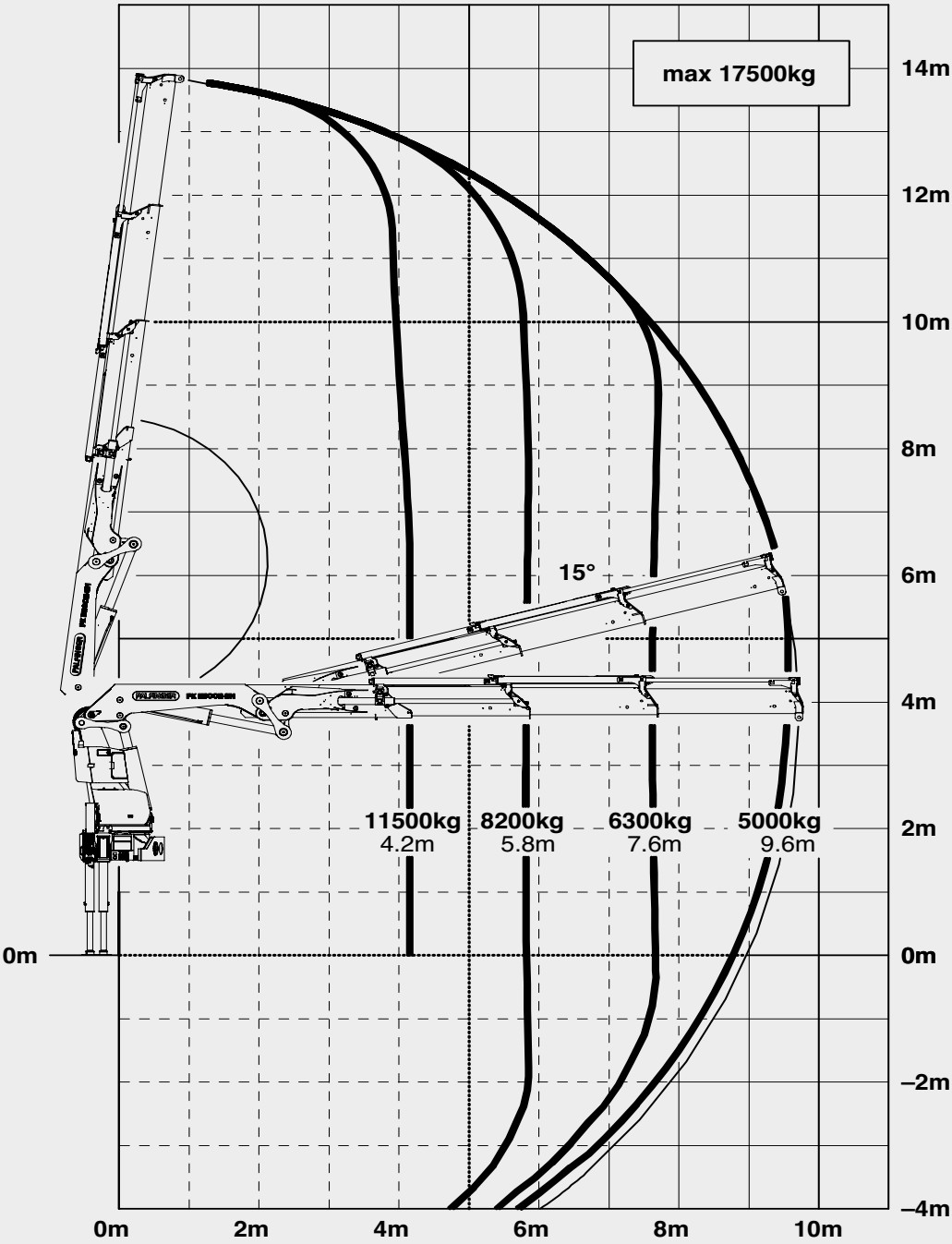
Width folded

Max. operating

Recommended

Dead weight (s

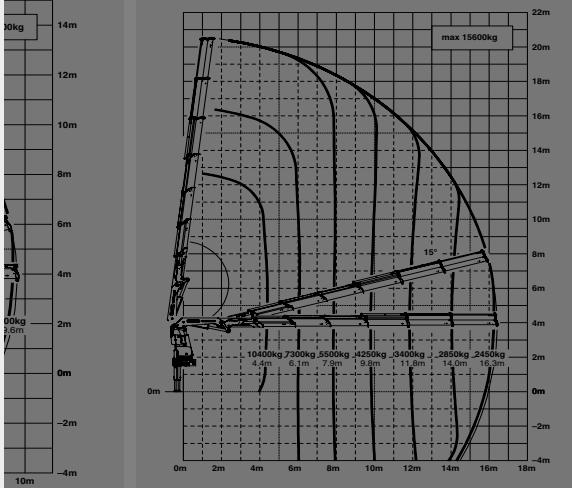
B



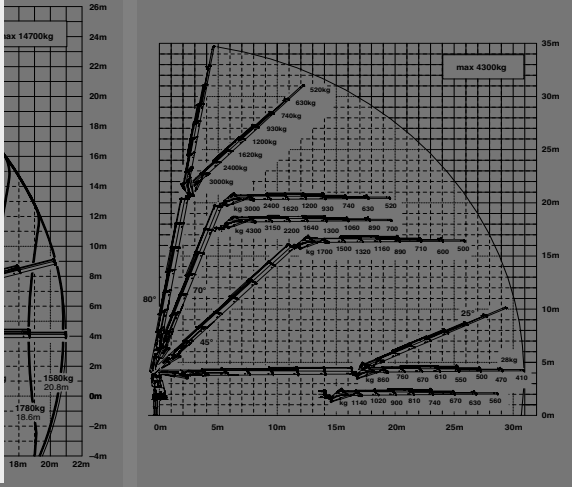
| max. | | 17500 kg | 38600 lbs |
|-------|--------|----------|-----------|
| 4.2 m | 13'9" | 11500 kg | 25300 lbs |
| 5.8 m | 19'0" | 8200 kg | 18100 lbs |
| 7.6 m | 24'11" | 6300 kg | 13800 lbs |
| 9.6 m | 31'6" | 5000 kg | 11000 lbs |



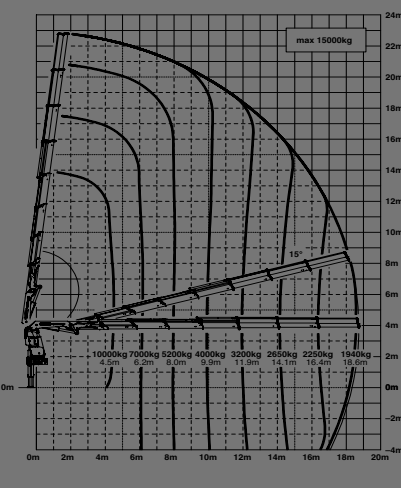
E



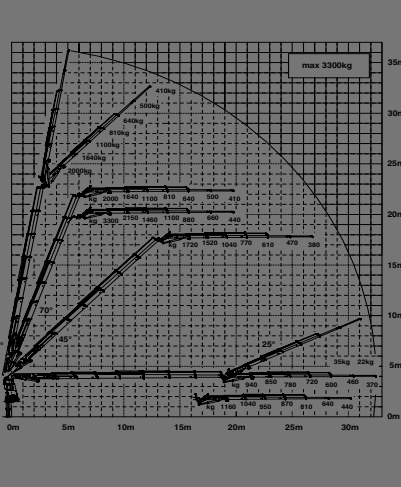
E PJ125E JV1 DPS PLUS



F



F PJ080C JV2 DPS PLUS





LIFETIME EXCELLENCE

HOME

OVERVIEW

FEATURES

VIDEO

ABOUT US

PK 53 HIGH

GENERAL

TECHNICAL DATA

Max. lifting mo

Max. lifting cap

Max. hydraulic

Max. manual o

Max. outreach

Slewing angle

Slewing torque

Slewing torque

Stabiliser spre

Fitting space r

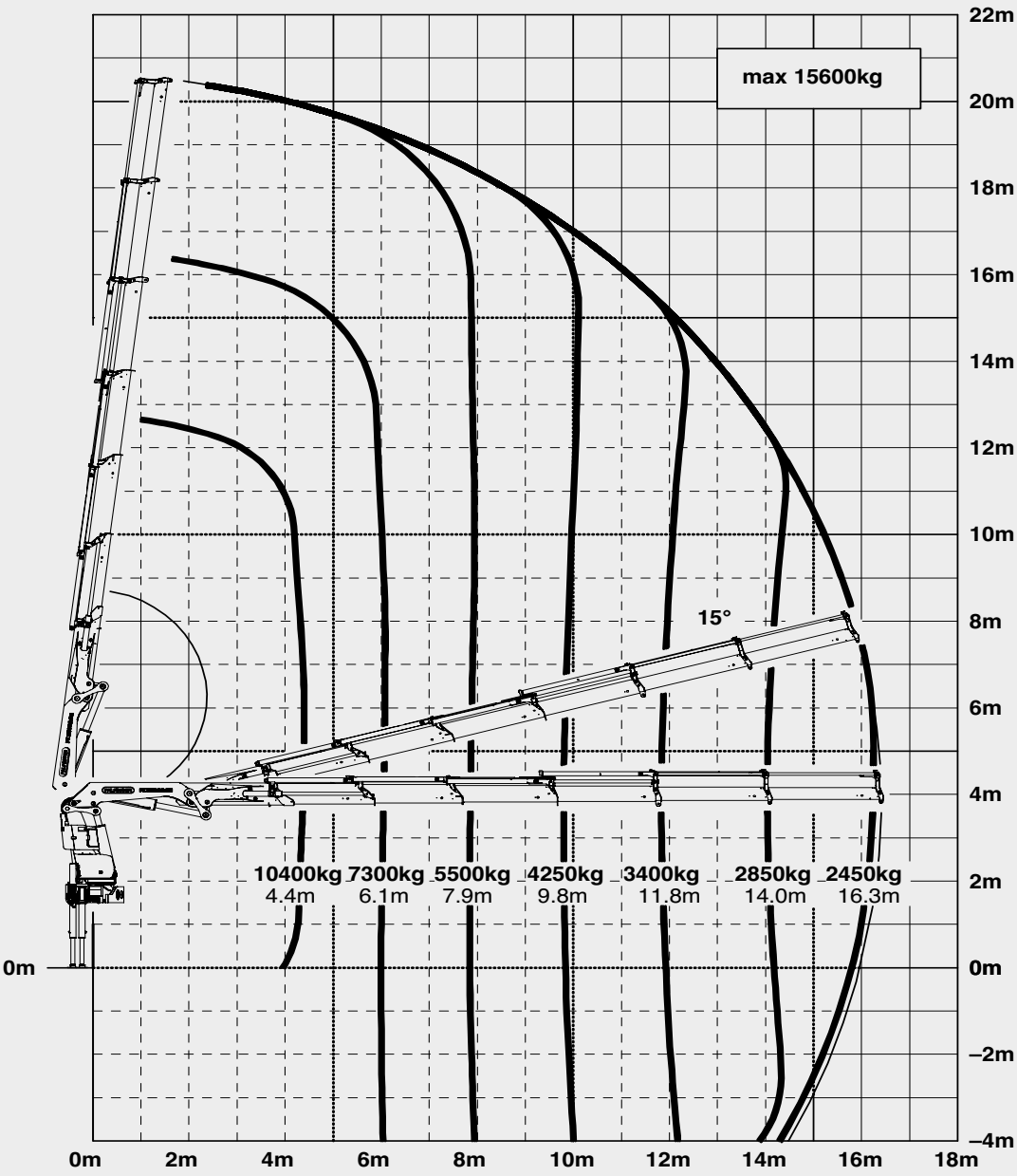
Width folded

Max. operating

Recommended

Dead weight (s

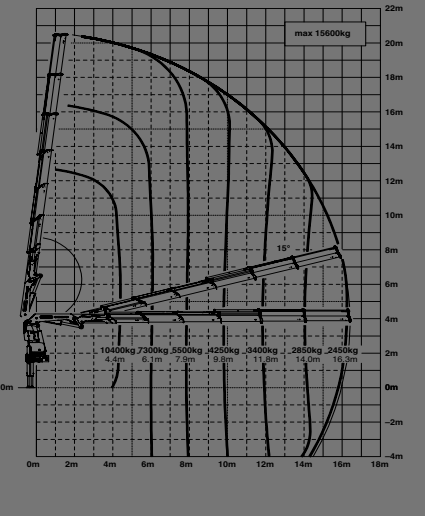
E



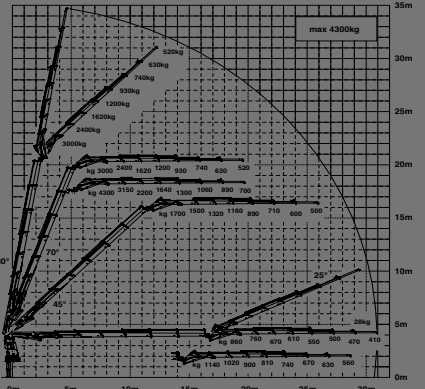
| max. | | 15600 kg | 34400 lbs |
|--------|--------|----------|-----------|
| 4.4 m | 14'5" | 10400 kg | 22900 lbs |
| 6.1 m | 20'0" | 7300 kg | 16100 lbs |
| 7.9 m | 25'11" | 5500 kg | 12000 lbs |
| 9.8 m | 32'2" | 4250 kg | 9300 lbs |
| 11.8 m | 38'9" | 3400 kg | 7500 lbs |
| 14.0 m | 45'11" | 2850 kg | 6200 lbs |
| 16.3 m | 53'6" | 2450 kg | 5400 lbs |



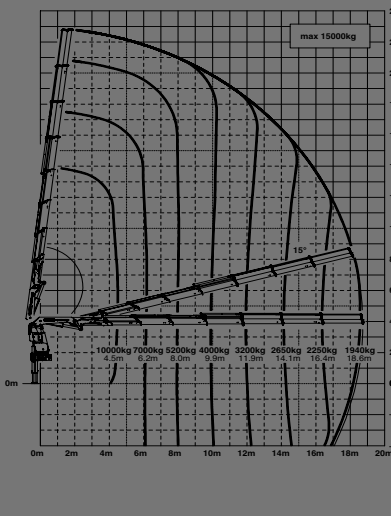
E



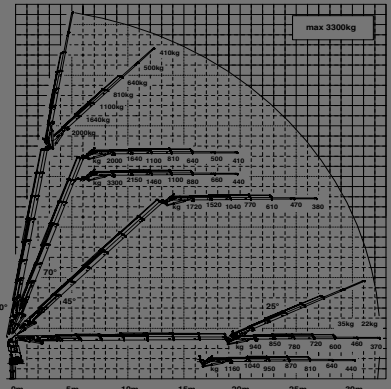
E PJ125E JV1 DPS PLUS



F



F PJ080C JV2 DPS PLUS



PK 53 HIGH

GENERAL

TECHNICA

Max. lifting mo

Max. lifting cap

Max. hydraulic

Max. manual o

Max. outreach

Slewing angle

Slewing torque

Slewing torque

Stabiliser spre

Fitting space r

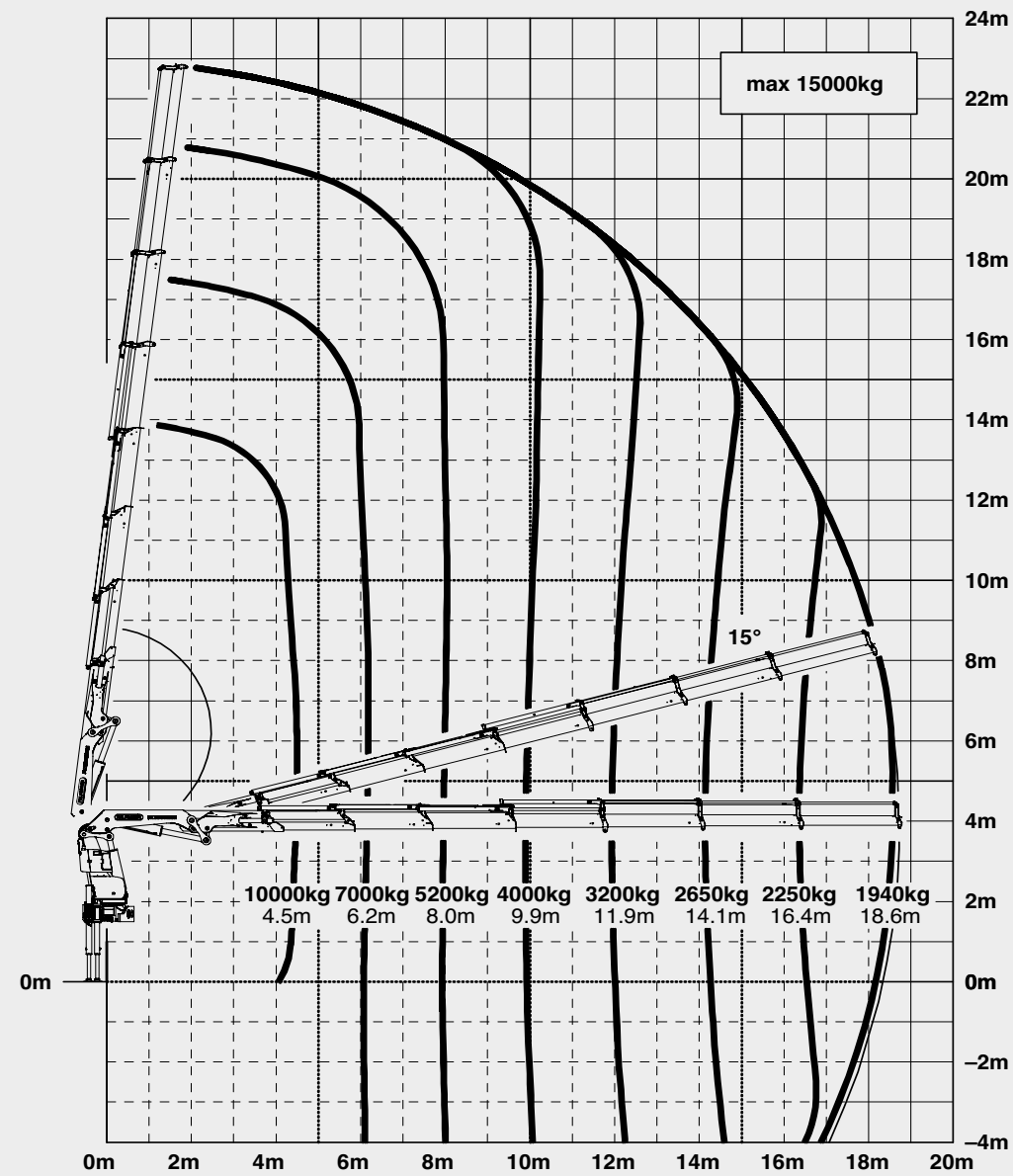
Width folded

Max. operating

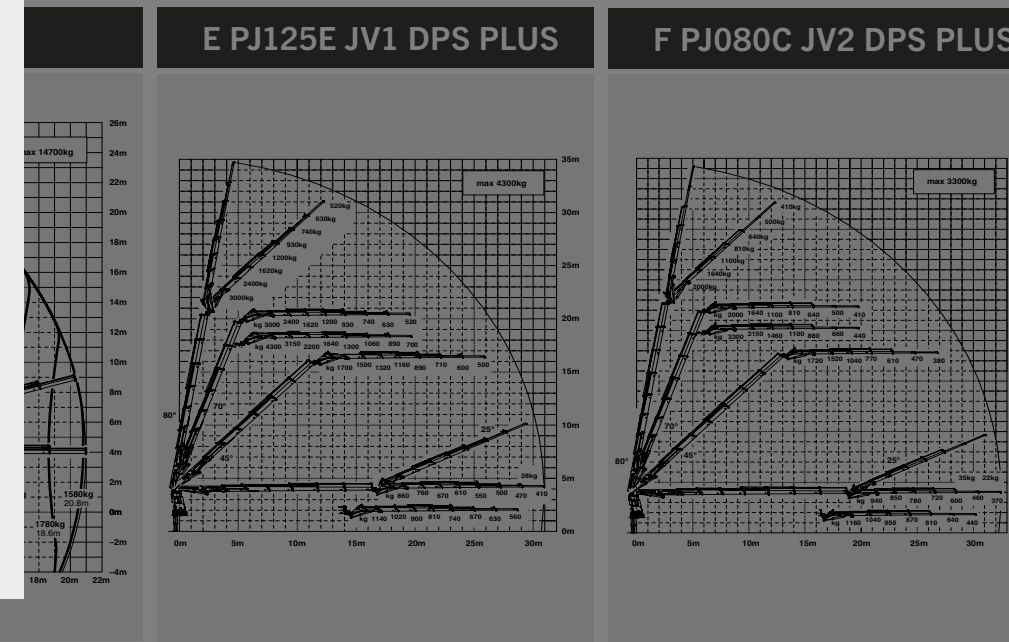
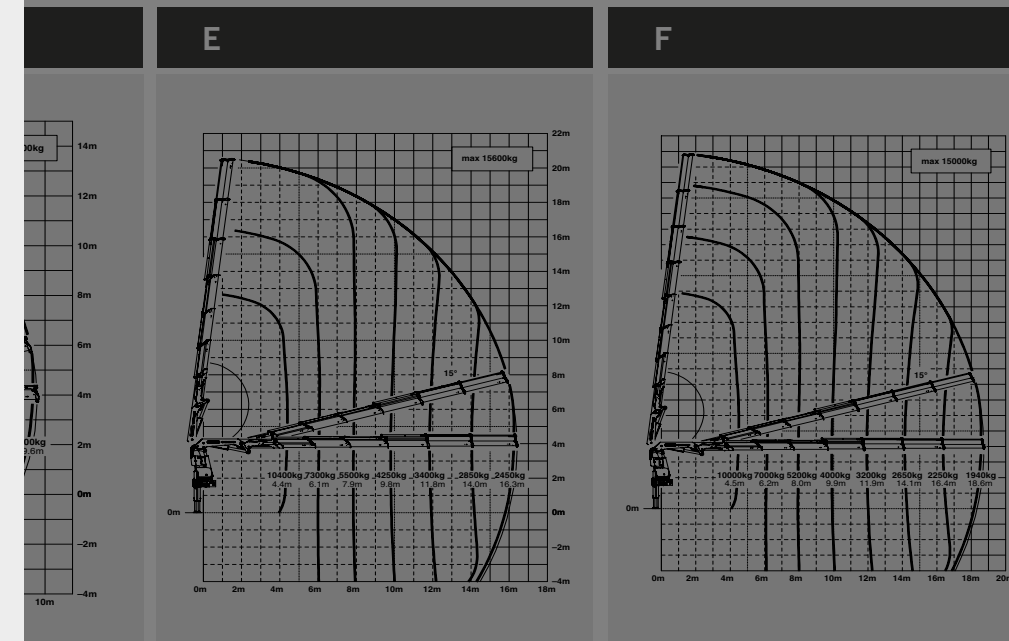
Recommended

Dead weight (s

F



| max. | | 15000 kg | 33100 lbs |
|--------|--------|----------|-----------|
| 4.5 m | 14'9" | 10000 kg | 22100 lbs |
| 6.2 m | 20'4" | 7000 kg | 15500 lbs |
| 8.0 m | 26'3" | 5200 kg | 11500 lbs |
| 9.9 m | 32'6" | 4000 kg | 8900 lbs |
| 11.9 m | 39'1" | 3200 kg | 7100 lbs |
| 14.1 m | 46'3" | 2650 kg | 5800 lbs |
| 16.4 m | 53'10" | 2250 kg | 4900 lbs |
| 18.6 m | 61'0" | 1940 kg | 4300 lbs |





LIFETIME EXCELLENCE

HOME

OVERVIEW

FEATURES

VIDEO

ABOUT US

PK 53
HIGH

GENERAL

TECHNICAL DATA

Max. lifting mo

Max. lifting cap

Max. hydraulic

Max. manual o

Max. outreach

Slewing angle

Slewing torque

Slewing torque

Stabiliser spre

Fitting space r

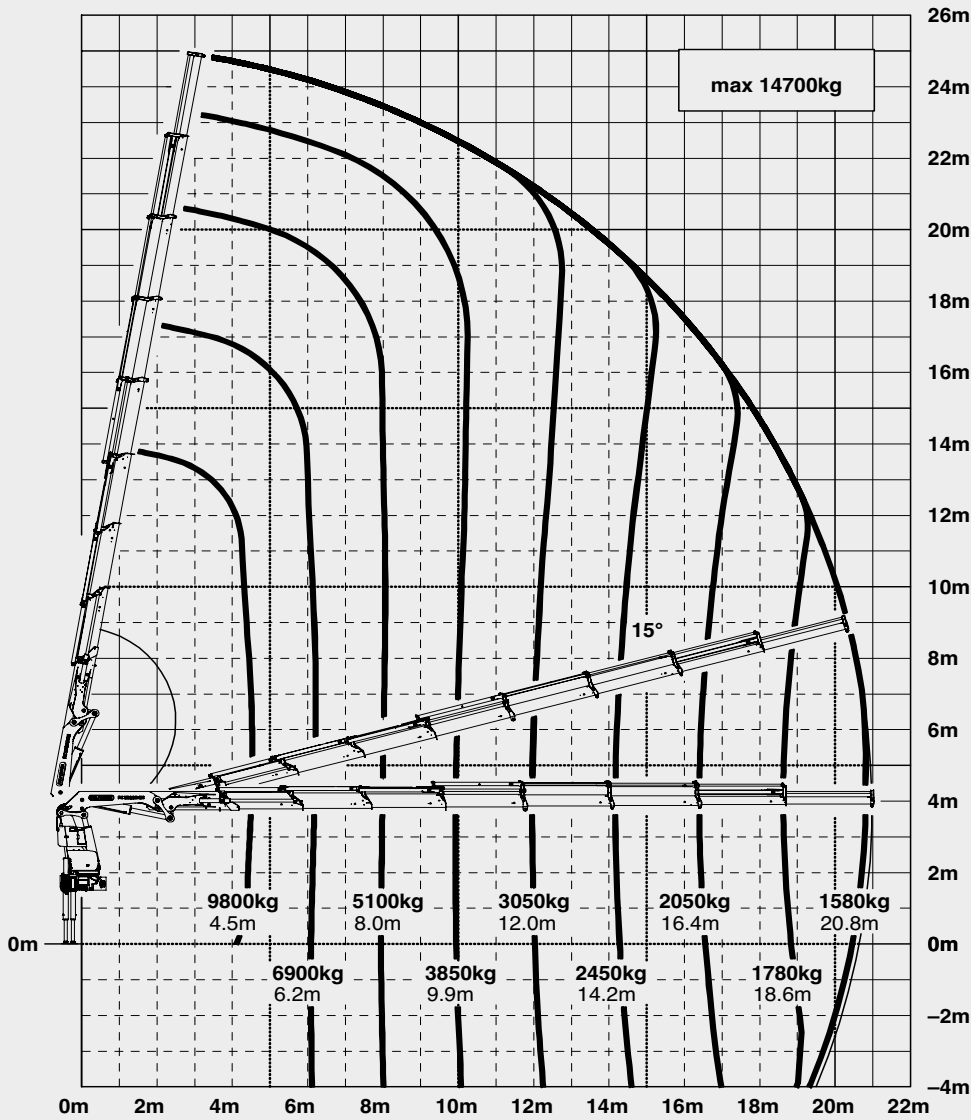
Width folded

Max. operating

Recommended

Dead weight (s

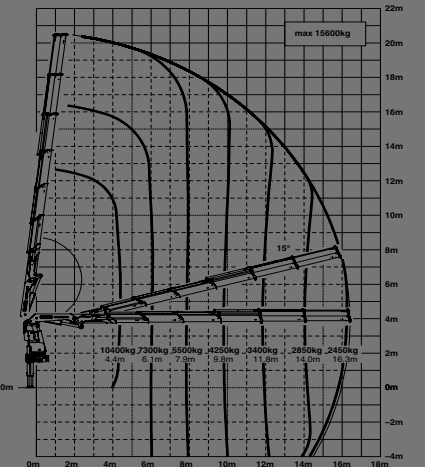
G



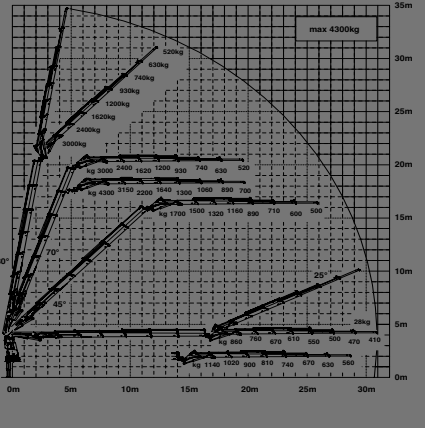
| max. | | 14700 kg | 32400 lbs |
|---------|--------|----------|-----------|
| 4.5 m | 14'9" | 9800 kg | 21700 lbs |
| 6.2 m | 20'4" | 6900 kg | 15100 lbs |
| 8.0 m | 26'3" | 5100 kg | 11100 lbs |
| 9.9 m | 32'6" | 3850 kg | 8500 lbs |
| 12.0 m | 39'4" | 3050 kg | 6700 lbs |
| 14.2 m | 46'7" | 2450 kg | 5400 lbs |
| 16.4 m | 53'10" | 2050 kg | 4550 lbs |
| 18.6 m | 61'0" | 1780 kg | 3900 lbs |
| 20.8 m | 68'3" | 1580 kg | 3500 lbs |
| 23.0 m* | 75'6" | 900 kg | 1980 lbs |
| 25.0 m* | 82'0" | 600 kg | 1320 lbs |



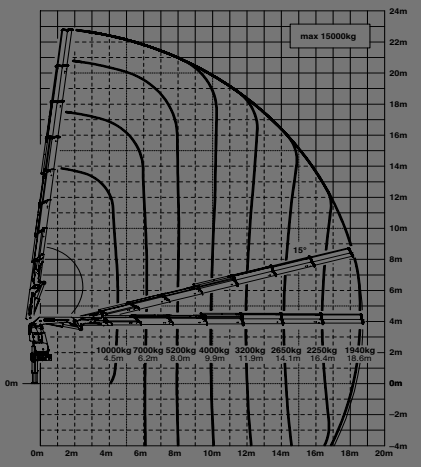
E



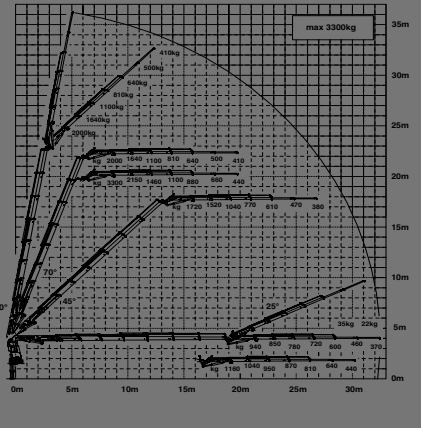
E PJ125E JV1 DPS PLUS



F



F PJ080C JV2 DPS PLUS





LIFETIME EXCELLENCE

HOME

OVERVIEW

FEATURES

VIDEO

ABOUT US

PK 53
HIGH

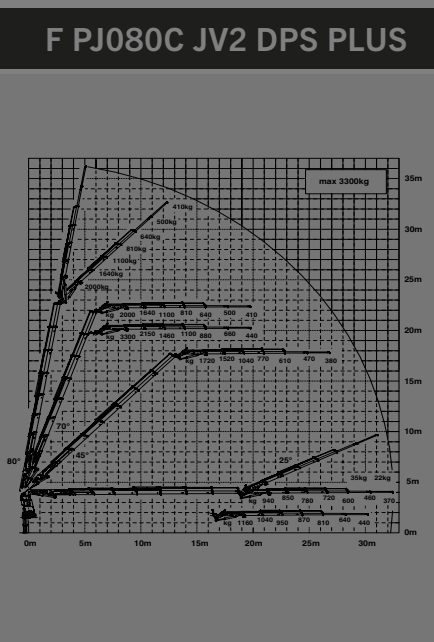
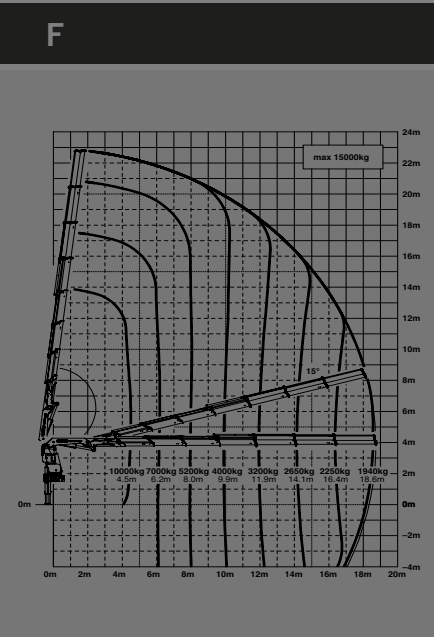
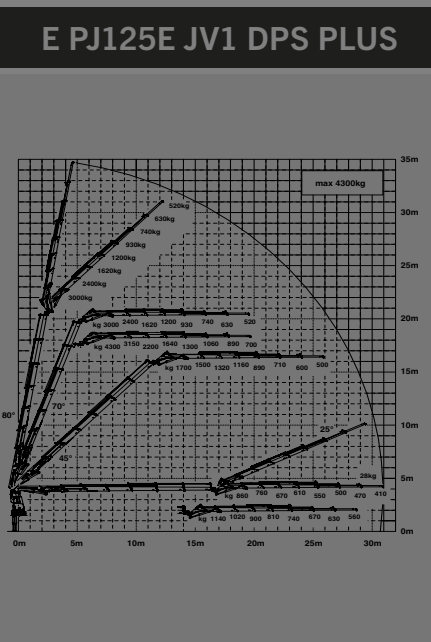
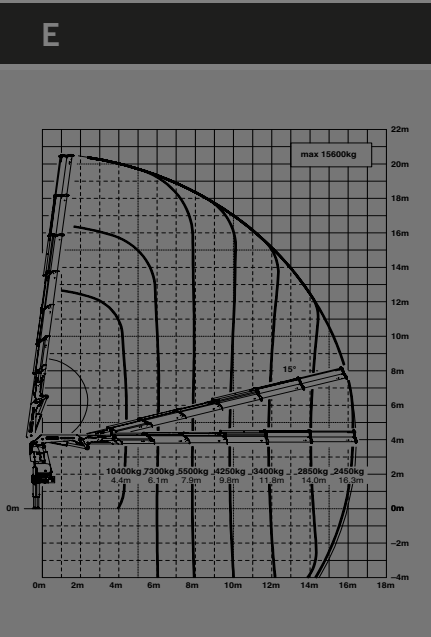
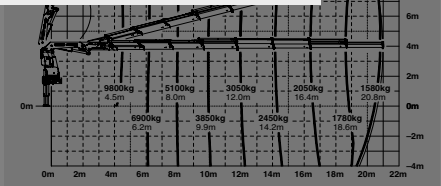
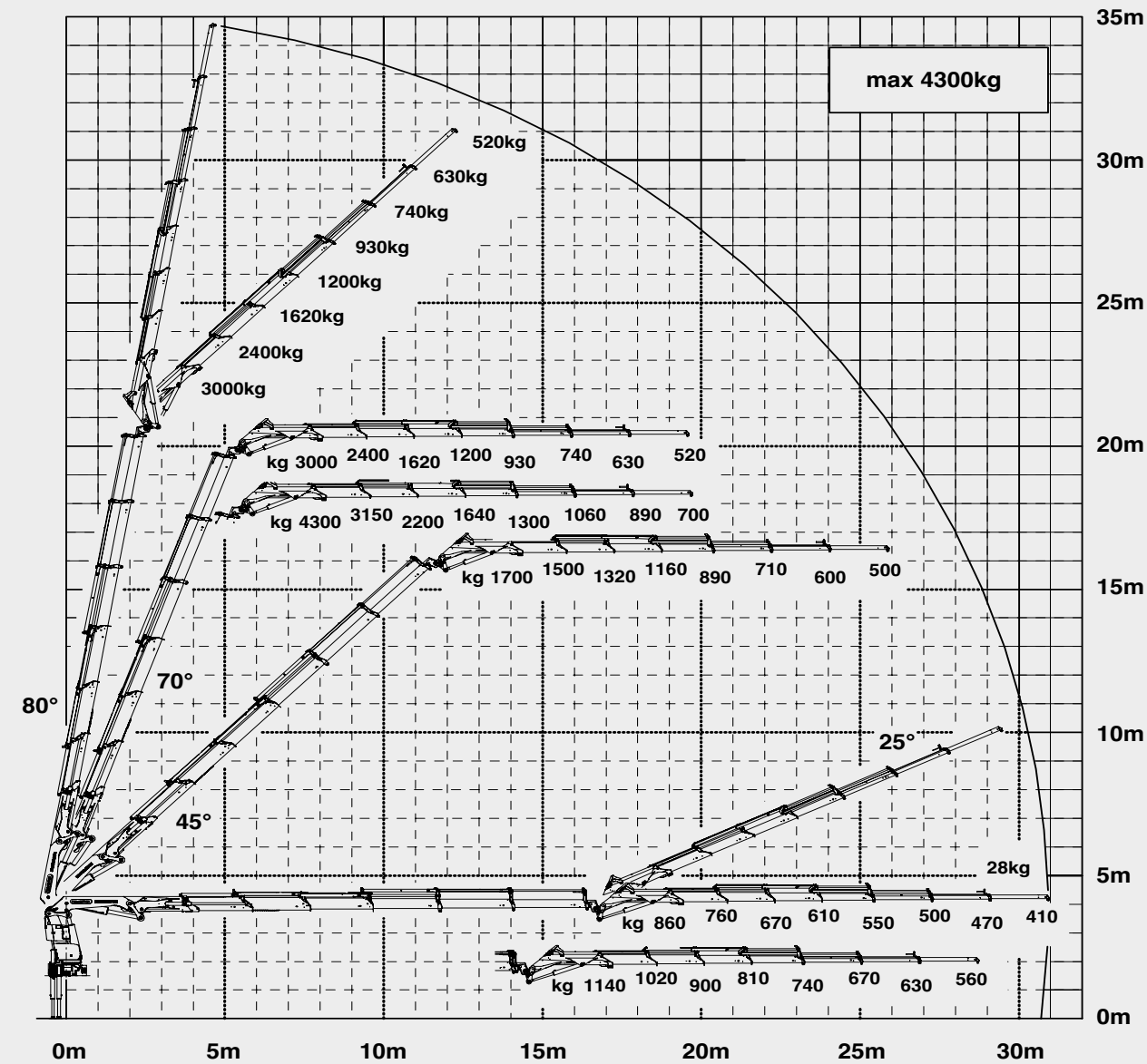
E PJ125E JV1 DPS PLUS

GENERAL

TECHNICAL DATA

- Max. lifting mo
- Max. lifting cap
- Max. hydraulic
- Max. manual o
- Max. outreach
- Slewing angle
- Slewing torque
- Slewing torque
- Stabiliser spre
- Fitting space r
- Width folded
- Max. operating
- Recommended

Dead weight (sta.)





LIFETIME EXCELLENCE

HOME

OVERVIEW

FEATURES

VIDEO

ABOUT US

PK 53 HIGH

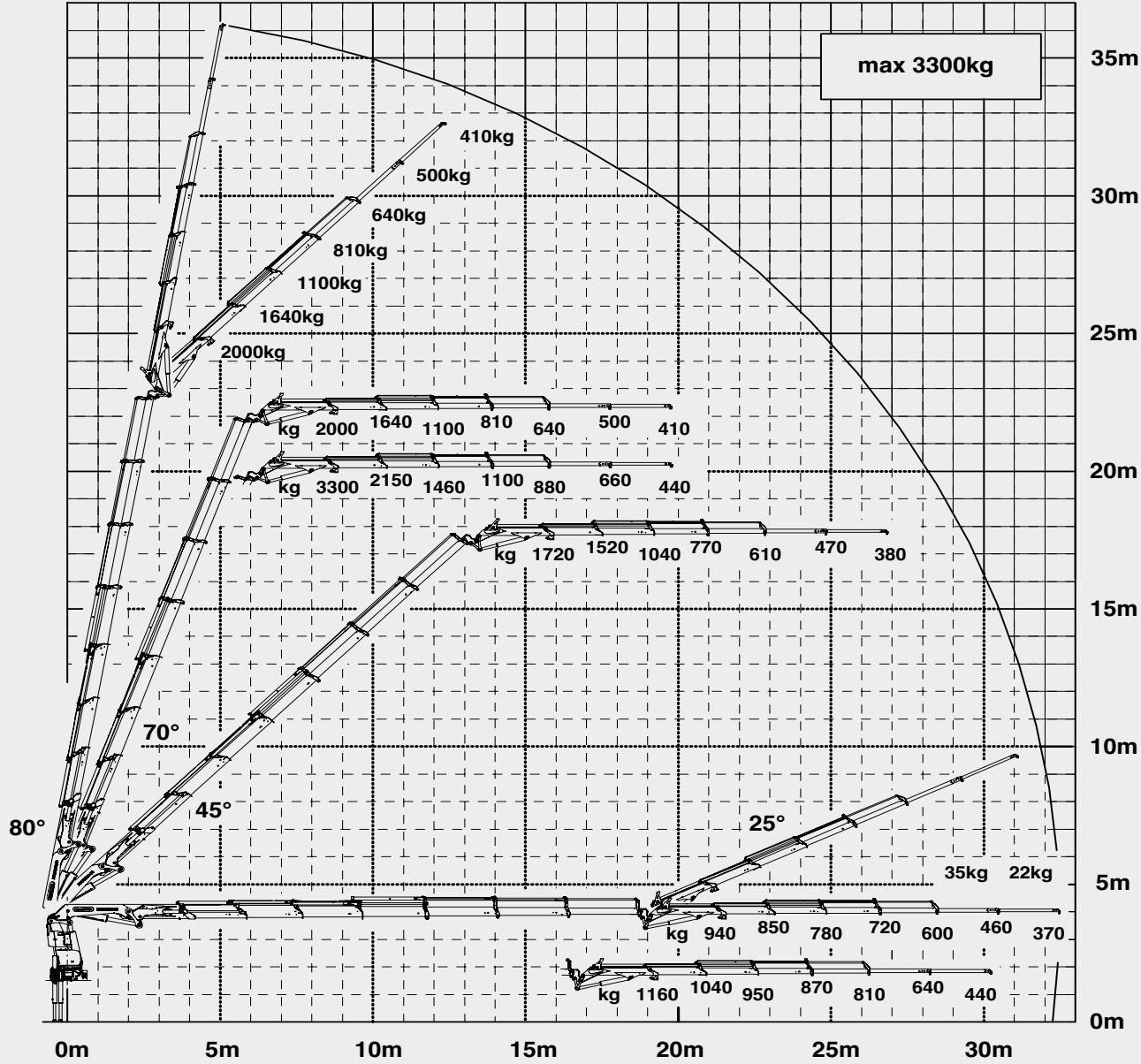
F PJ080C JV2 DPS PLUS

GENERAL

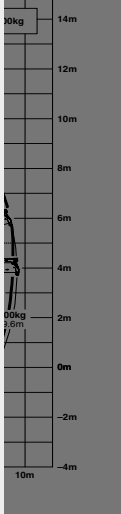
TECHNICAL DATA

- Max. lifting moment
- Max. lifting capacity
- Max. hydraulic capacity
- Max. manual operation
- Max. outreach
- Slewing angle
- Slewing torque
- Slewing torque
- Stabiliser spread
- Fitting space required
- Width folded
- Max. operating height
- Recommended

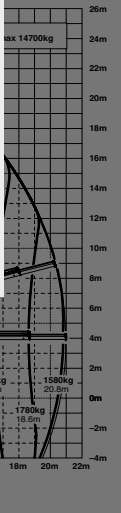
Dead weight (std.)



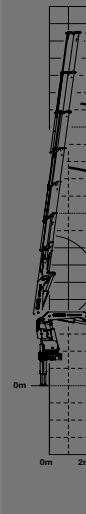
E



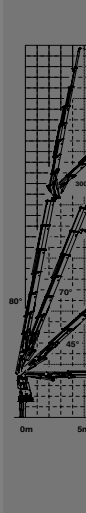
E PJ125E JV1 DPS PLUS



F



F PJ080C JV2 DPS PLUS





LIFETIME EXCELLENCE

OVERVIEW

PK 53002 SH

HIGH PERFORMANCE



| GENERAL | TECHNICAL DATA | APPLICATION | |
|---------|----------------|-------------|--|
|---------|----------------|-------------|--|



LIFETIME EXCELLENCE

PK 53002 SH HIGH PERFORMANCE



FEATURES



KTLPALFINGER

protected

Paltronic150

controlled

RRC

Radio Remote Controloperated

HPSC

High Performance Stability Controlmonitored

AOS

Active Oscillation Suppressioninside

DPSplus

Dual Power Systemactivated



LIFETIME EXCELLENCE

HOME

OVERVIEW

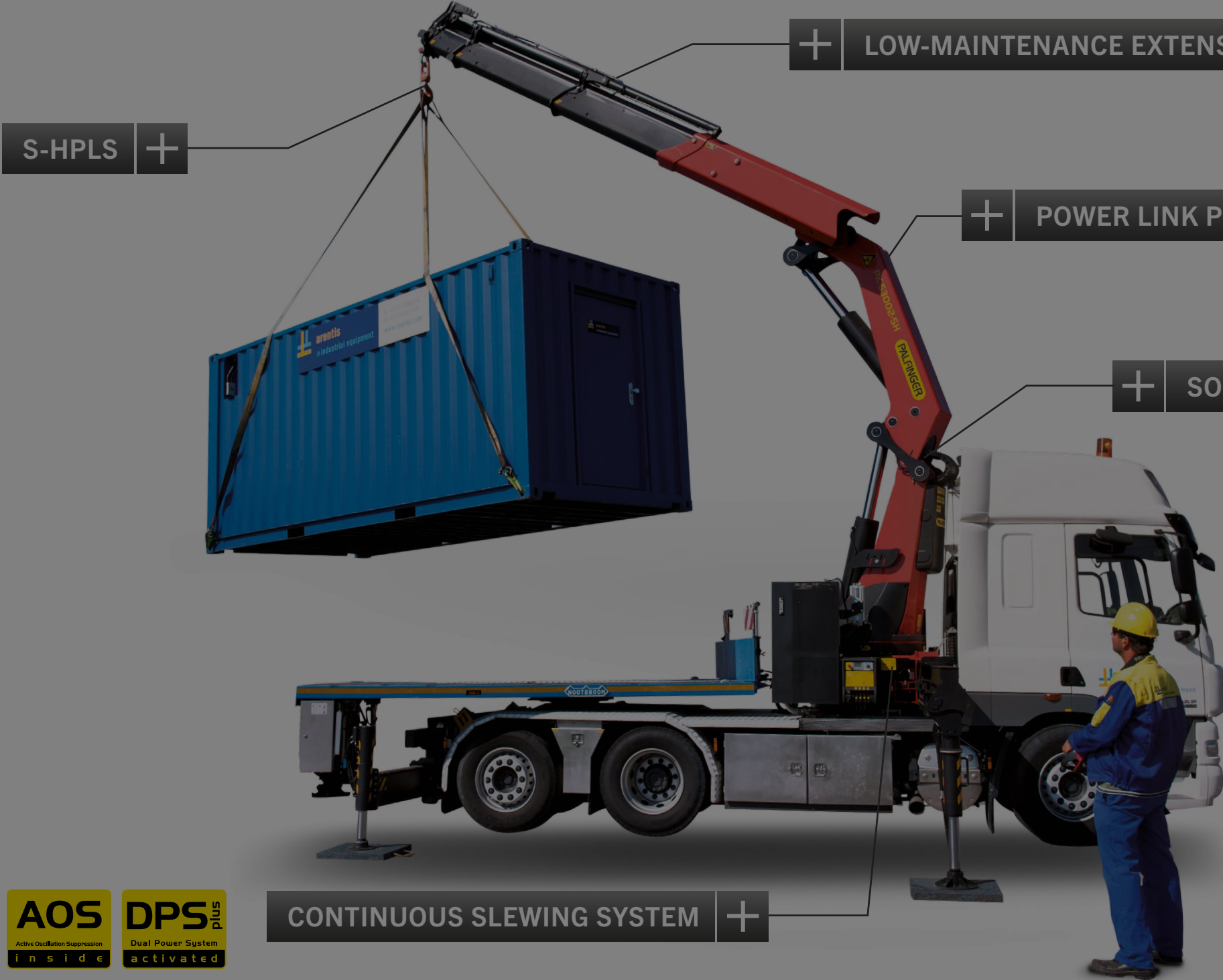
FEATURES

VIDEO

ABOUT US

PK 53002 SH

HIGH PERFORMANCE



LOW-MAINTENANCE EXTENSION SYSTEM
REDUCES SERVICE TIME

With sliding elements made of synthetic material and the high-quality KTL coating, this boom system significantly simplifies service performed by the operator. This saves time and money – and protects the environment.

KTL

protected

Paltronic 150

controlled

RRC

Radio Remote Control operated

HPSC

High Performance Stability Control monitored

AOS

Active Oscillation Suppression inside

DPS plus

Dual Power System activated

CONTINUOUS SLEWING SYSTEM +



LIFETIME EXCELLENCE

HOME

OVERVIEW

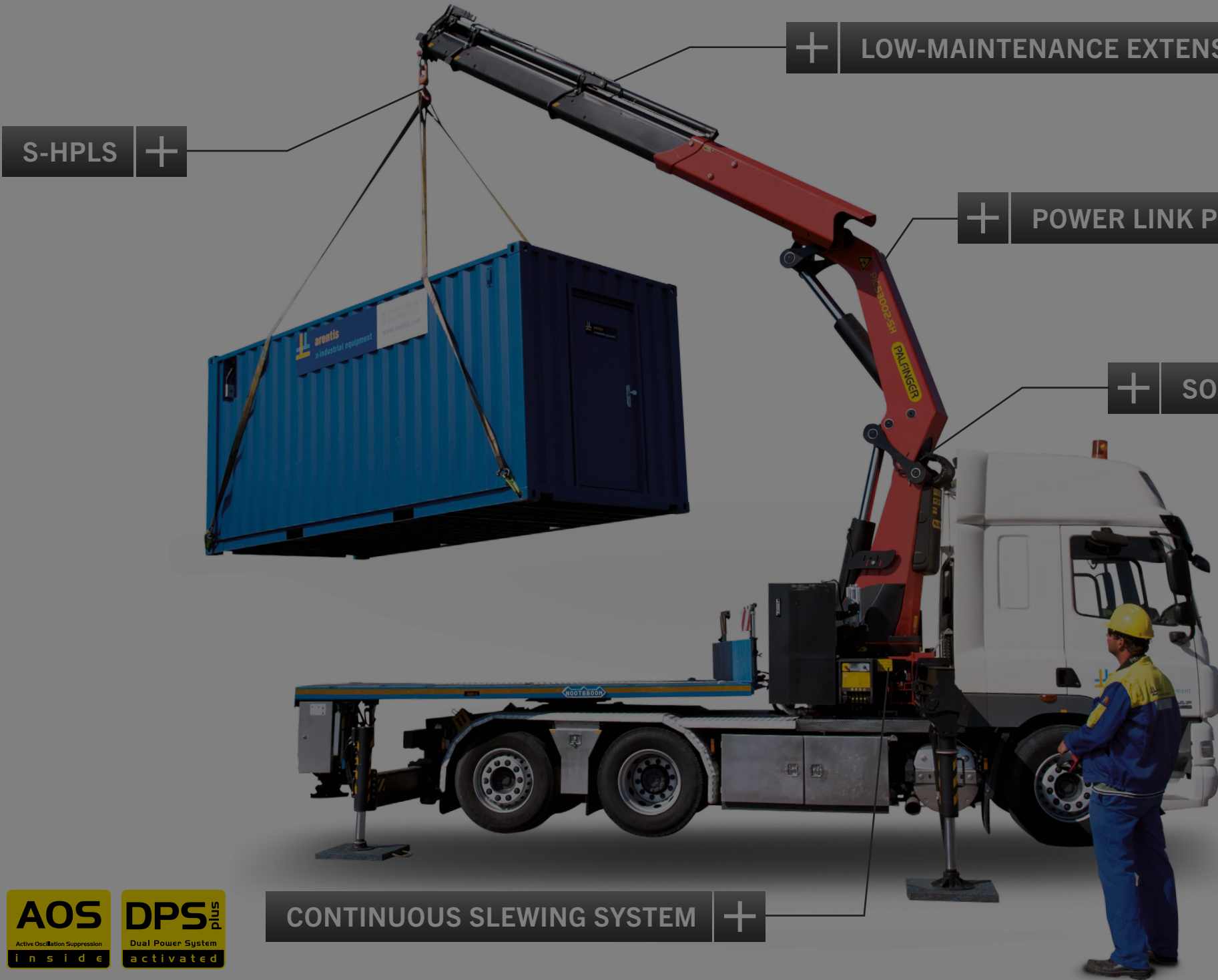
FEATURES

VIDEO

ABOUT US

PK 53002 SH

HIGH PERFORMANCE



POWER LINK PLUS

HIGH VARIETY OF USES

With the 15-degree reverse linkage system, you can reach through low door openings and also work inside buildings. Heavy crane work – even in difficult conditions.

KTLPALFINGER

protected

Paltronic150

controlled

RRC

Radio Remote Control

operated

HPSC

High Performance Stability Control

monitored

AOS

Active Oscillation Suppression

inside

DPSplus

Dual Power System

activated

CONTINUOUS SLEWING SYSTEM



LIFETIME EXCELLENCE

HOME

OVERVIEW

FEATURES

VIDEO

ABOUT US

PK 53002 SH

HIGH PERFORMANCE



CONTINUOUS SLEWING SYSTEM

UNRESTRICTED MOVEMENT

More efficient in operation due to faster loading cycles, since the crane can be slewed over a shorter distance. The crane works more efficiently and faster.

KTLPALFINGER

protected

Paltronic 150

controlled

RRC

Radio Remote Control operated

HPSC

High Performance Stability Control monitored

AOS

Active Oscillation Suppression inside

DPS plus

Dual Power System activated

CONTINUOUS SLEWING SYSTEM +



LIFETIME EXCELLENCE

HOME

OVERVIEW

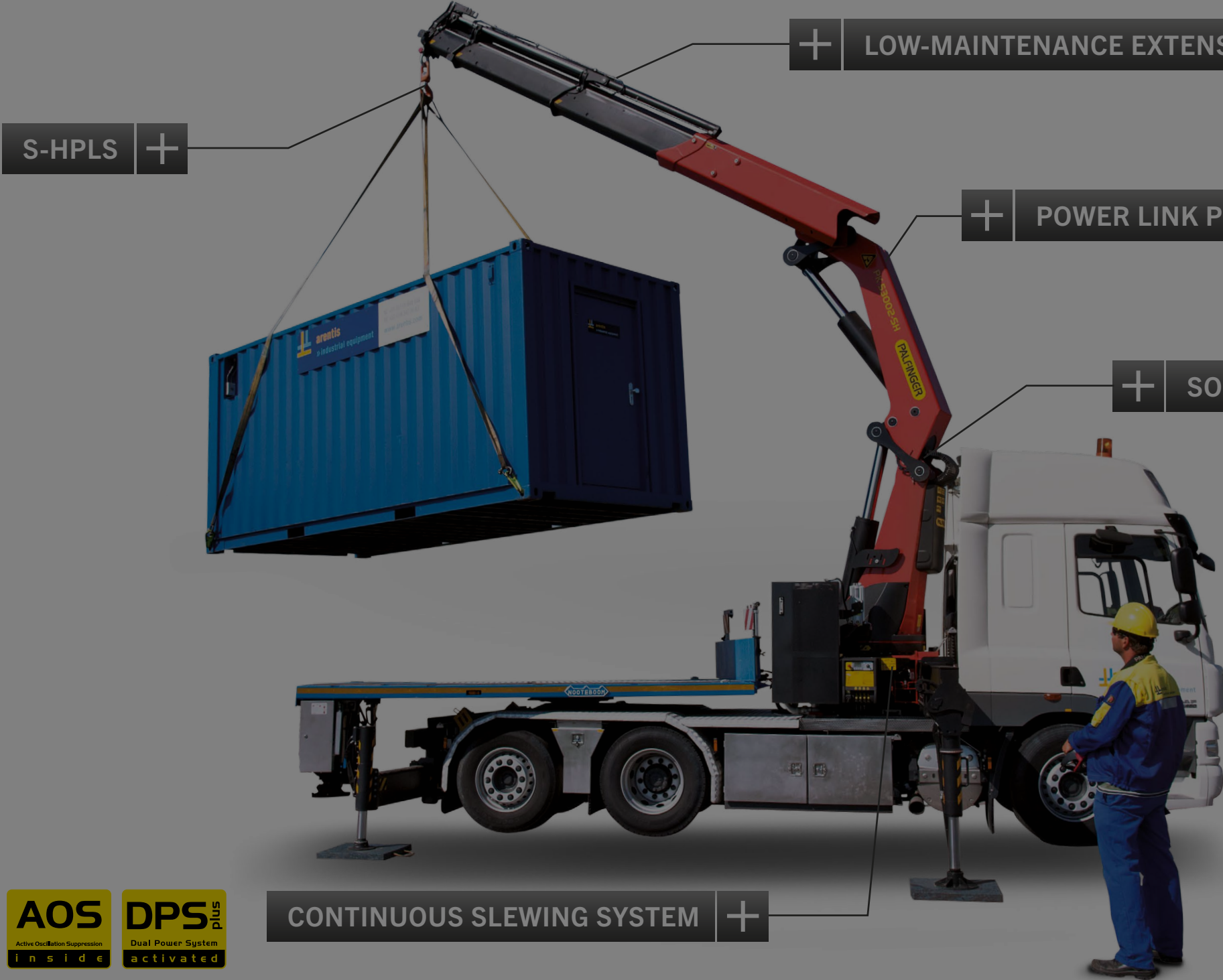
FEATURES

VIDEO

ABOUT US

PK 53002 SH

HIGH PERFORMANCE



SOFT STOP FUNCTION

MORE COMFORT AND SAFETY

The Soft Stop function is an electronic limit position damper. It causes gentle braking of all crane movements before the limit position is reached. Hence, jerky movements and load impacts can be avoided. The crane can be operated more gently and precisely.

KTLPALTRONIC 150RRC

protectedcontrolledoperated

HPSC

High Performance Stability Controlmonitored

AOS

Active Oscillation Suppressioninside

DPS plus

Dual Power Systemactivated



LIFETIME EXCELLENCE

HOME

OVERVIEW

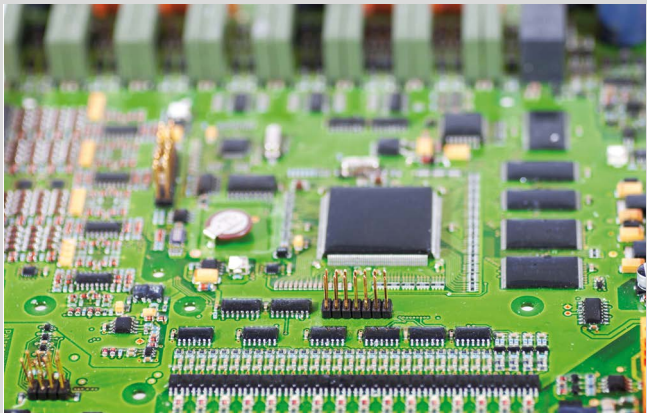
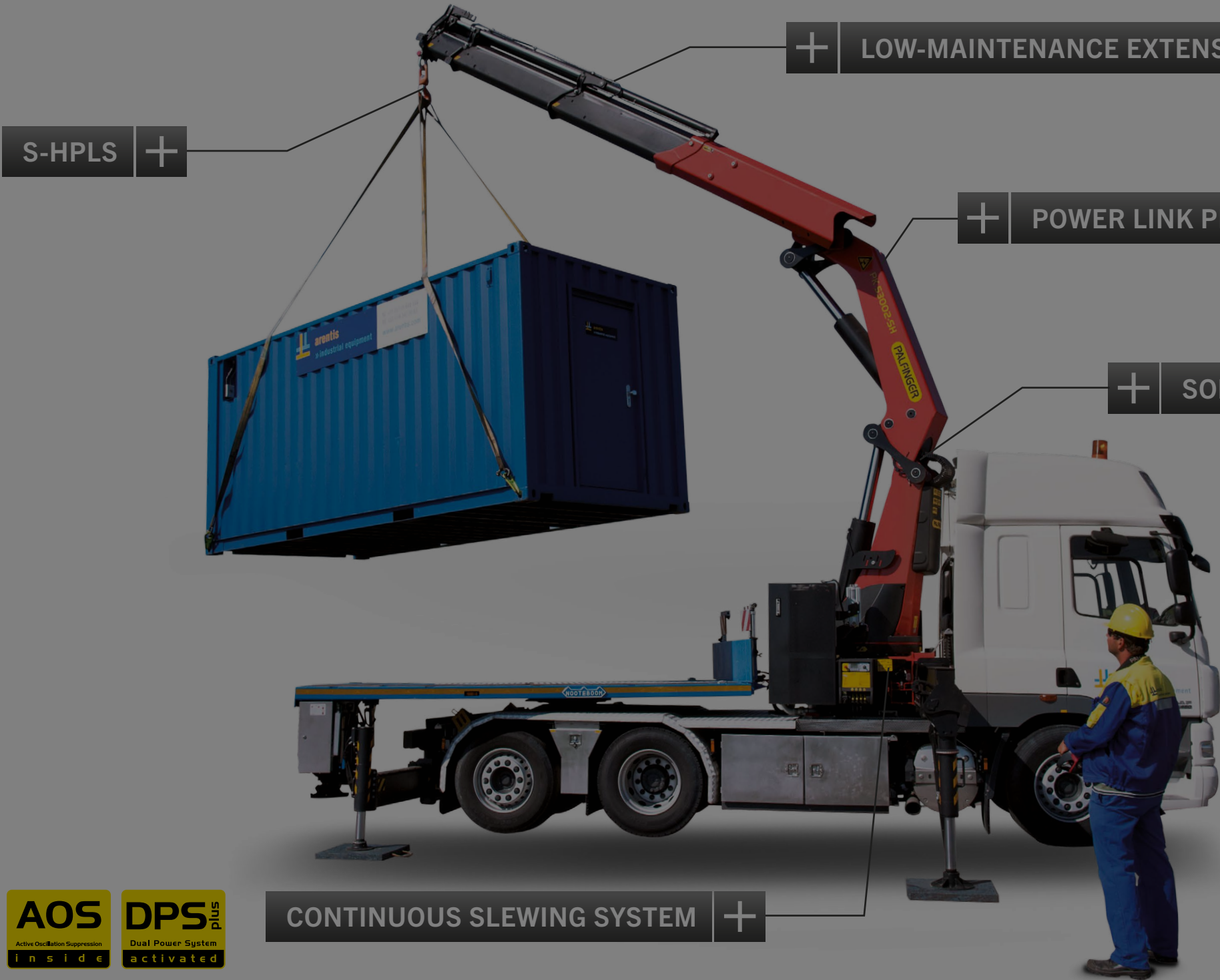
FEATURES

VIDEO

ABOUT US

PK 53002 SH

HIGH PERFORMANCE



S-HPLS
MORE LIFTING POWER WHEN IT IS REALLY NEEDED

S-HPLS is one of the most important functions of the PALTRONIC 150. It is a fully automatic system for increasing the lifting power. Depending on the need, there is continuous adaptation of the lifting power and speed of the crane.

KTLPALTRONIC 150RRC

protectedcontrolledoperated

HPSC

High Performance Stability Controlmonitored

AOS

Active Oscillation Suppressioninside

DPS plus

Dual Power Systemactivated

CONTINUOUS SLEWING SYSTEM +



LIFETIME EXCELLENCE

PK 53002 SH HIGH PERFORMANCE



ABOUT US

TO US, “LIFETIME EXCELLENCE”
MEANS SEEING TOP PERFORMANCE
AS A MINIMUM REQUIREMENT.

LIFETIME EXCELLENCE is our promise. Our core message.
Our brand essence. To our customers, it means top performance
without compromise. The most cost-effective, reliable and innovative
lifting solutions in a global network of expert service partners
– for the entire product lifetime.

EXCELLENCE
ECONOMY &
EFFICIENCY

PERFORMANCE

EXCELLENCE
INNOVATION &
FLEXIBILITY

SERVICE

EXCELLENCE
SERVICE &
LOCATIONS

SUPPORT

EXPERTISE

SAFETY

EXCELLENCE
RELIABILITY &
EXPERTISE

PLAY VIDEO