

PK 10002 SH
PK 12502 SH

PALFINGER
LIFETIME EXCELLENCE

**LOADS CAN BE MOVED MORE PRECISELY
DUE TO THE STANDARD SOFT STOP**



LIFETIME EXCELLENCE

PALFINGER LOADER CRANES ARE CONVINCING DUE TO THEIR SUPERIOR LIFE-CYCLE PERFORMANCE. THEY ARE THE MOST ECONOMICAL AND ALSO THE MOST RELIABLE OVER THE ENTIRE PRODUCT LIFE. FROM SOLUTION FINDING TO RESALE.

BETTER
SOLUTIONS

BETTER
EFFICIENCY

BETTER
ERGONOMICS

HIGHER VALUE
RETENTION



HIGHER
AVAILABILITY

HIGHER
SERVICEABILITY

BETTER
ECOLOGY

MORE
RELIABILITY



FAST AND EFFICIENT



- Maximum precision and safety due to optional AOS
- High value retention thanks to KTL coating
- More lifting power due to S-HPLS
- Additional applications with Power Link Plus
- Increased comfort and safety due to Soft Stop



FIRST-RATE IN DESIGN AND PERFORMANCE

12 HIGHLIGHTS



POWER LINK PLUS
HIGH VARIETY OF USES

With the 15-degree reverse linkage system, you can reach through low door openings and also work inside buildings. Heavy crane work – even in difficult conditions.



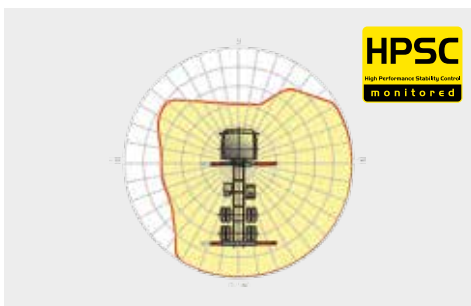
LOW-MAINTENANCE EXTENSION SYSTEM
REDUCES SERVICE TIME

With sliding elements made of synthetic material and the high-quality KTL coating, this boom system significantly simplifies service performed by the operator. This saves time and money – and protects the environment.



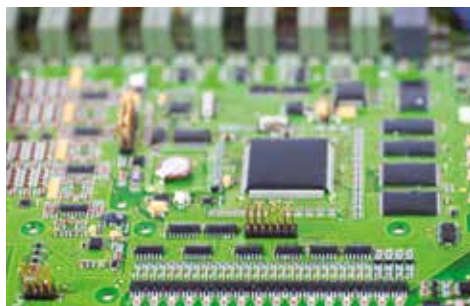
HIGH SPEED EXTENSION
FOR EFFICIENT ASSIGNMENTS

The High Speed Extension speeds up the extension boom system. Crane works faster and more efficiently.



HPSC
MAXIMUM UTILISATION OF THE WORKING RANGE

The variable stabiliser positioning of the High Performance Stability Control System makes it possible to utilise the lifting capacity to the maximum. It enables working within tight spaces.



S-HPLS
MORE LIFTING POWER WHEN IT COUNTS

S-HPLS is one of the most important functions of the PALTRONIC 150. It is a fully automatic system for increasing lifting power. The lifting power and crane speed can be continuously adapted to suit requirements.



CONTROL TECHNOLOGY
COMMUNICATION WITH THE OPERATOR

New standards in operator-friendliness through perfect interaction between the PALTRONIC 150, the control valve and the wireless remote control. The operator is guided clearly and safely.



HOSE EQUIPMENT FOR ATTACHMENTS
VERSATILE AND USER-FRIENDLY

The hose equipment offers an easy means of connecting auxiliary equipment. The hose equipment is guided in hose trays for protection.



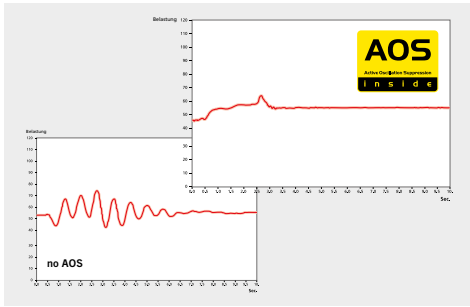
FUNCTIONAL DESIGN
PRACTICAL AND ATTRACTIVE

Robust plastic covers protect crane parts against dirt and damage. Better appearance and increased operational comfort – during the entire lifetime.



KTL – CATHODIC DIP PAINTING
FOR HIGH VALUE RETENTION

The UV-resistant coating guarantees long-term surface protection. Perfect appearance during the entire lifetime for highest resale value.



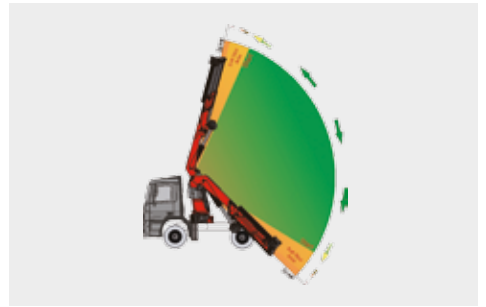
AOS
MAXIMUM PRECISION AND SAFETY

The active oscillation suppression system prevents "post-oscillation" in the event of rapid braking or load changes. The stress peaks on the extension boom system are reduced and material fatigue and wear are minimised. This increases the resale value.



LIGHTING PACKAGE
MORE CRANE SAFETY PARTICULARLY AT DUSK AND DARK

LEDs which backlight the control panel make it easier to read off the crane functions and provide the crane operator with a quick overview of the entire panel during the working process. LED warning lights in the supporting cylinders mean greater safety for crane operator and passers-by.



SOFT STOPP FUNKTION
IMPROVED COMFORT AND SAFETY

The Soft Stop function is an electronic limit position damper. It causes gentle braking of all crane movements before the limit position is reached. Hence, jerky movements and load impacts can be avoided. The crane can be operated more gently and precisely.

KTL
protected

Paltronic 150
controlled

RRC
Radio Remote Control
operated

HPSC
High Performance Stability Control
monitored

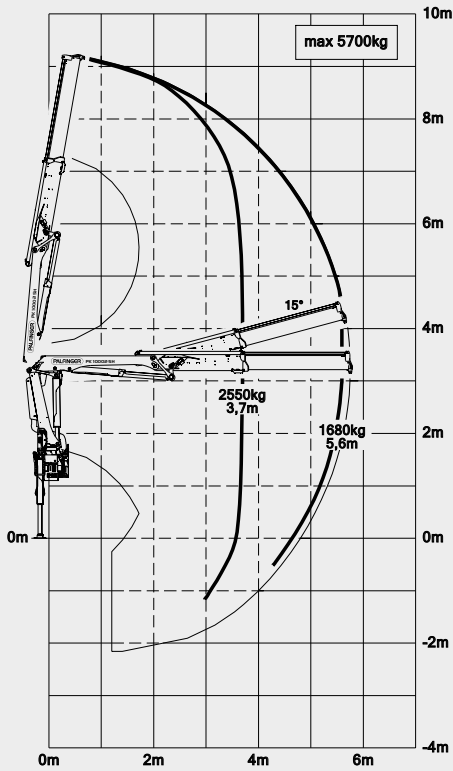
AOS
Active Oscillation Suppression
inside

* Optional features / country-specific equipment

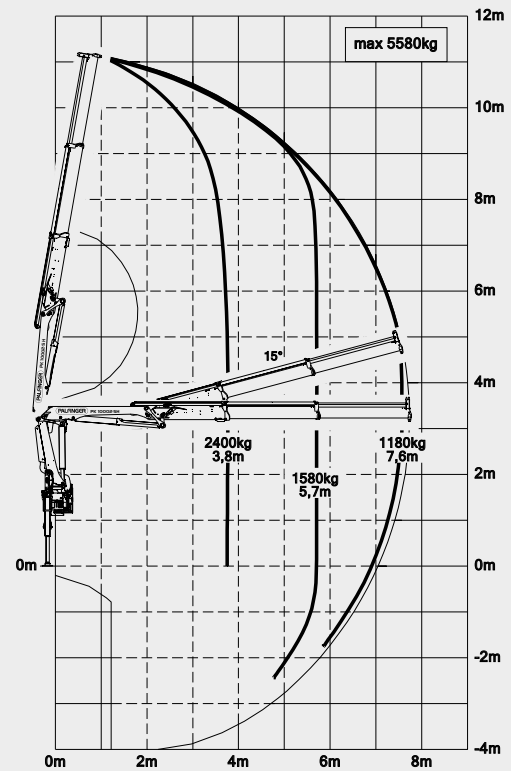
PK 10002 SH

HIGH PERFORMANCE

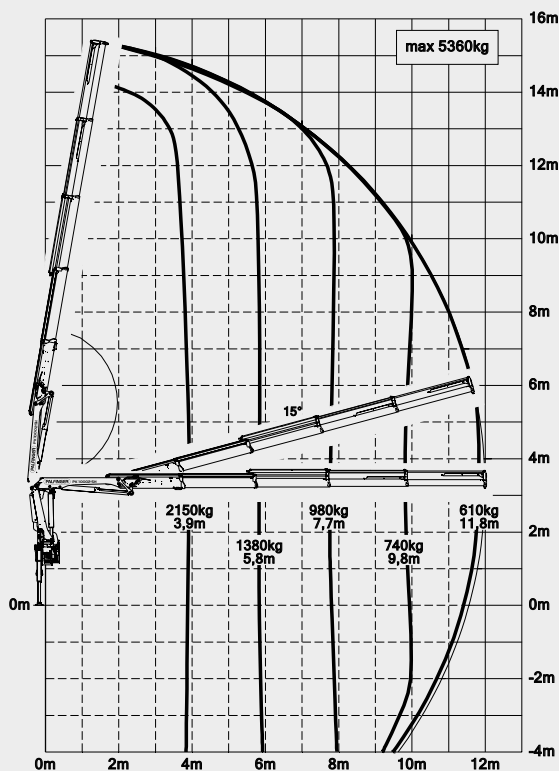
STD



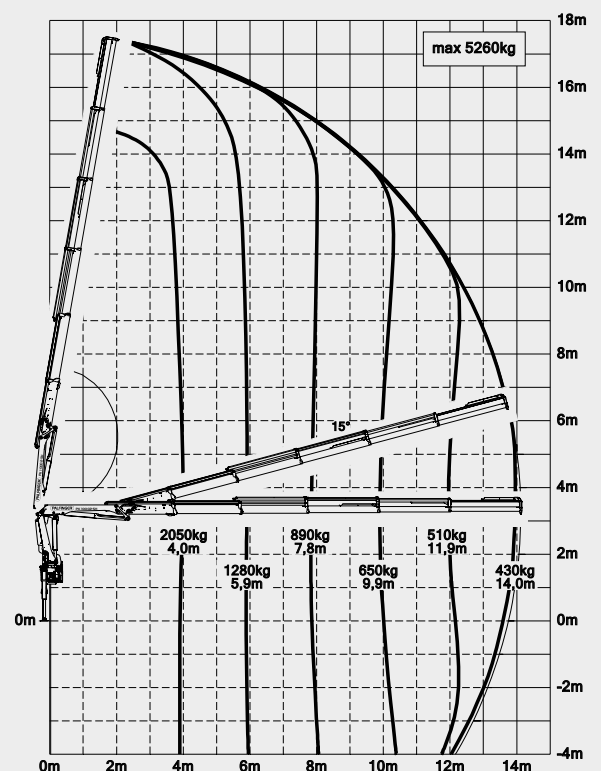
A



C

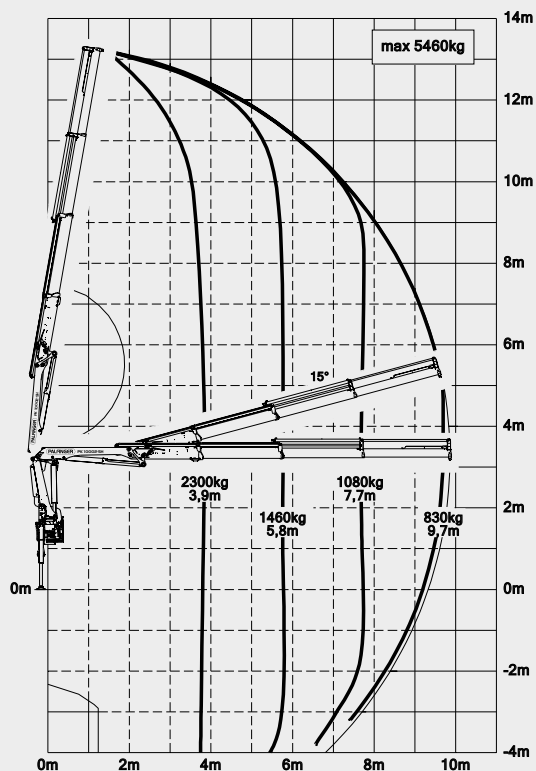


D



INNOVATIVE TECHNOLOGY

B



LIFTING CAPACITIES

STD	max.	5700 kg	55.9 kN
	3.7 m	12' 2"	2550 kg 5600 lbs
	5.6 m	18' 4"	1680 kg 3700 lbs

A	max.	5580 kg	54.7 kN
	3.8 m	12' 6"	2400 kg 5300 lbs
	5.7 m	18' 8"	1580 kg 3450 lbs
	7.6 m	24' 11"	1180 kg 2600 lbs

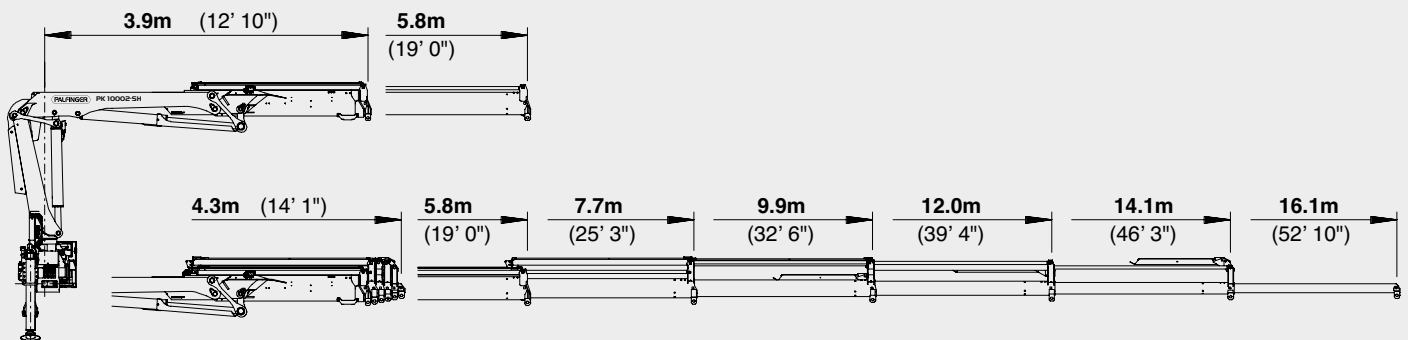
B	max.	5460 kg	53.6 kN
	3.9 m	12' 10"	2300 kg 5000 lbs
	5.8 m	19' 0"	1460 kg 3250 lbs
	7.7 m	25' 3"	1080 kg 2350 lbs
	9.7 m	31' 10"	830 kg 1840 lbs
	11.9 m*	39' 1"	640 kg 1410 lbs
	13.9 m*	45' 7"	520 kg 1140 lbs

C	max.	5360 kg	52.6 kN
	3.9 m	12' 10"	2150 kg 4750 lbs
	5.8 m	19' 0"	1380 kg 3050 lbs
	7.7 m	25' 3"	980 kg 2150 lbs
	9.8 m	32' 2"	740 kg 1640 lbs
	11.8 m	38' 9"	610 kg 1340 lbs
	13.8 m*	45' 3"	490 kg 1080 lbs
	15.8 m*	51' 10"	380 kg 840 lbs

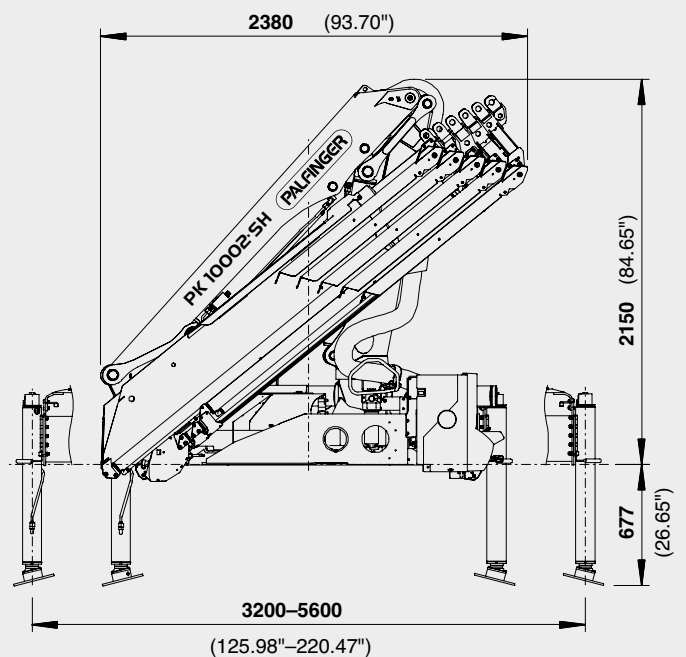
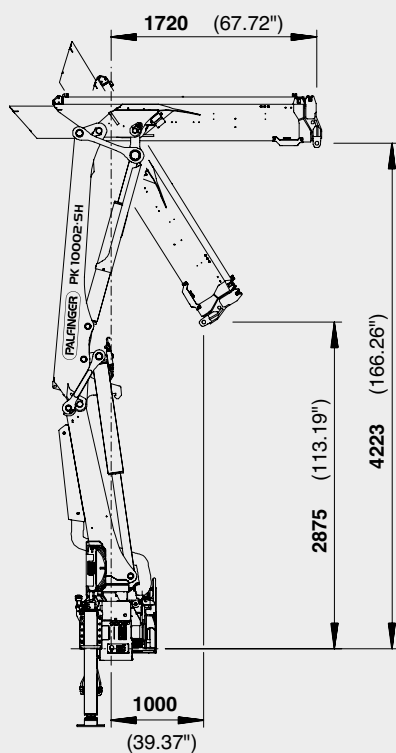
D	max.	5260 kg	51.6 kN
	4.0 m	13' 1"	2050 kg 4550 lbs
	5.9 m	19' 4"	1280 kg 2800 lbs
	7.8 m	25' 7"	890 kg 1960 lbs
	9.9 m	32' 6"	650 kg 1440 lbs
	11.9 m	39' 1"	510 kg 1140 lbs
	14.0 m	45' 9"	430 kg 940 lbs
	16.0 m*	52' 6"	350 kg 770 lbs

PERFECT DIMENSIONS

EXTENSION BOOM VARIATIONS



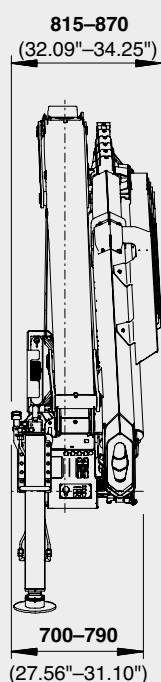
DIMENSIONS



PK 10002 SH

TECHNICAL SPECIFICATIONS (EN 12999 HC1 HD5/B3)

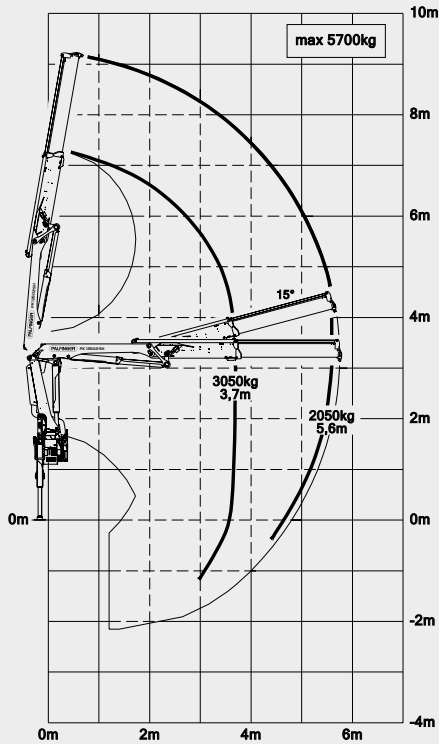
Max. lifting moment	9.4 mt/91.9 kNm	67780 ft.lbs
Max. lifting capacity	5700 kg/55.9 kN	12570 lbs
Max. hydraulic outreach	14.1 m	46' 3"
Max. manual outreach	16.1 m	52' 10"
Slewing angle	400°	
Slewing torque	1.0 mt/9.8 kNm	7230 ft.lbs
Stabiliser spread (std./max.)	3.2 m / 5.6 m	10' 6" / 18' 4"
Fitting space required (std.)	0.70 m	2' 4"
Width folded	2.38 m	7' 10"
Max. operating pressure	365 bar	5293 psi
Recommended pump capacity	from 40 l/min	10.6 US gal./min
	to 50 l/min	13.2 US gal./min
Dead weight (std.)	1070 kg	2359 lbs



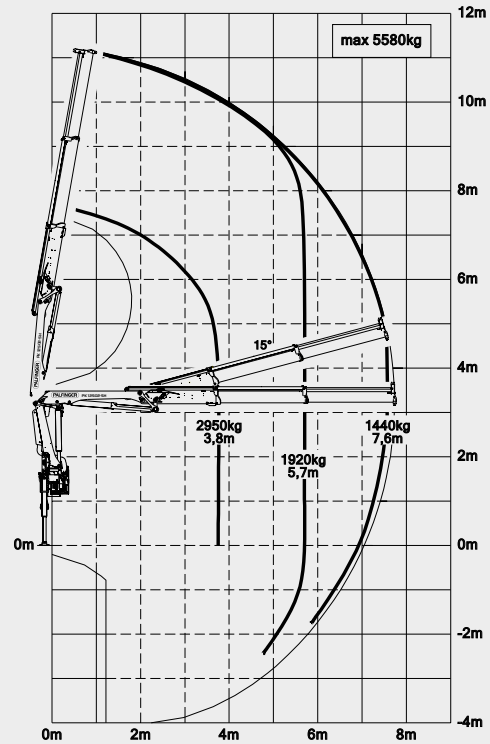
PK 12502 SH

HIGH PERFORMANCE

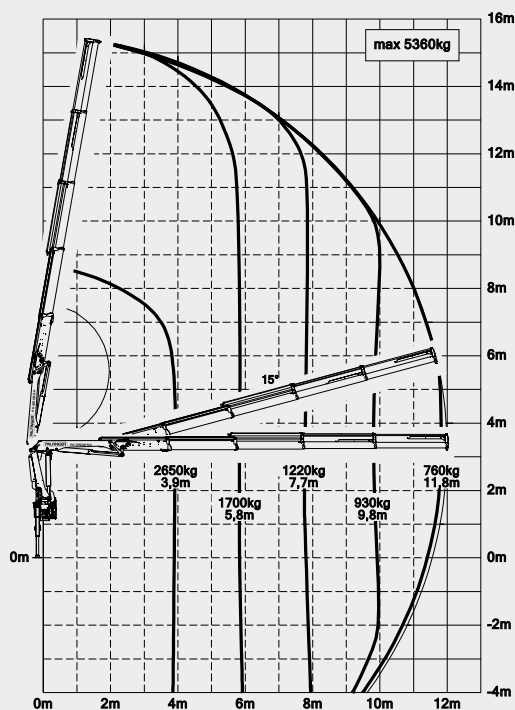
STD



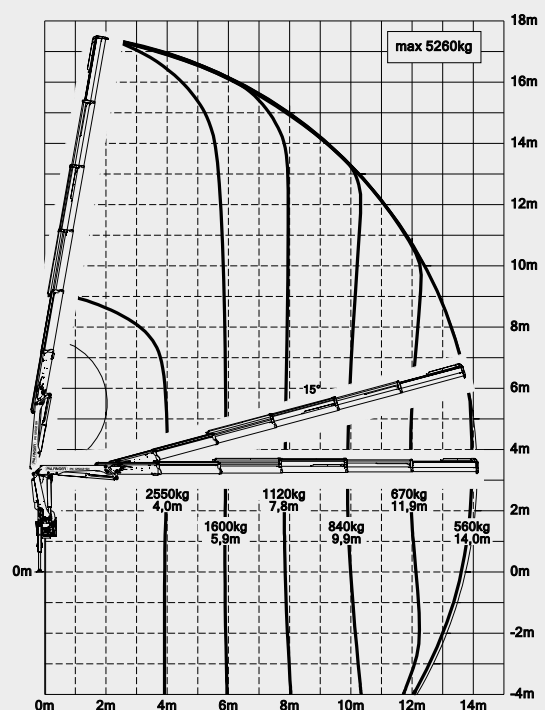
A



C

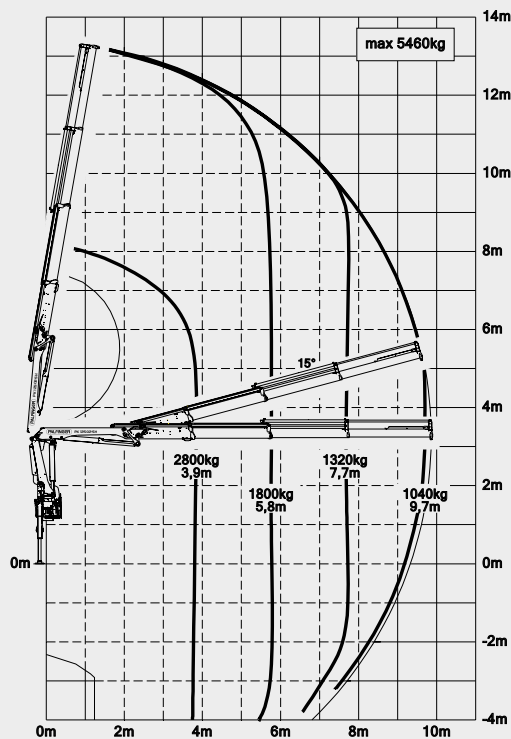


D



PROVEN IN CONTINUOUS SITUATIONS

B



LIFTING CAPACITIES

STD	max.	5700 kg	55.9 kN
	3.7 m	12' 2"	3050 kg
	5.6 m	18' 4"	2050 kg

A	max.	5580 kg	54.7 kN
	3.8 m	12' 6"	2950 kg
	5.7 m	18' 8"	1920 kg
	7.6 m	24' 11"	1440 kg

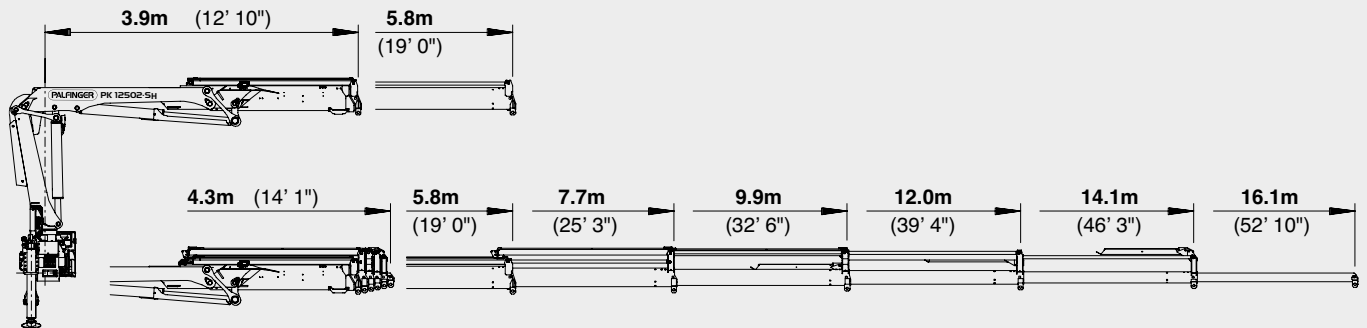
B	max.	5460 kg	53.6 kN
	3.9 m	12' 10"	2800 kg
	5.8 m	19' 0"	1800 kg
	7.7 m	25' 3"	1320 kg
	9.7 m	31' 10"	1040 kg
	11.9 m*	39' 1"	800 kg
	13.9 m*	45' 7"	660 kg

C	max.	5360 kg	52.6 kN
	3.9 m	12' 10"	2650 kg
	5.8 m	19' 0"	1700 kg
	7.7 m	25' 3"	1220 kg
	9.8 m	32' 2"	930 kg
	11.8 m	38' 9"	760 kg
	13.8 m*	45' 3"	620 kg
	15.8 m*	51' 10"	380 kg

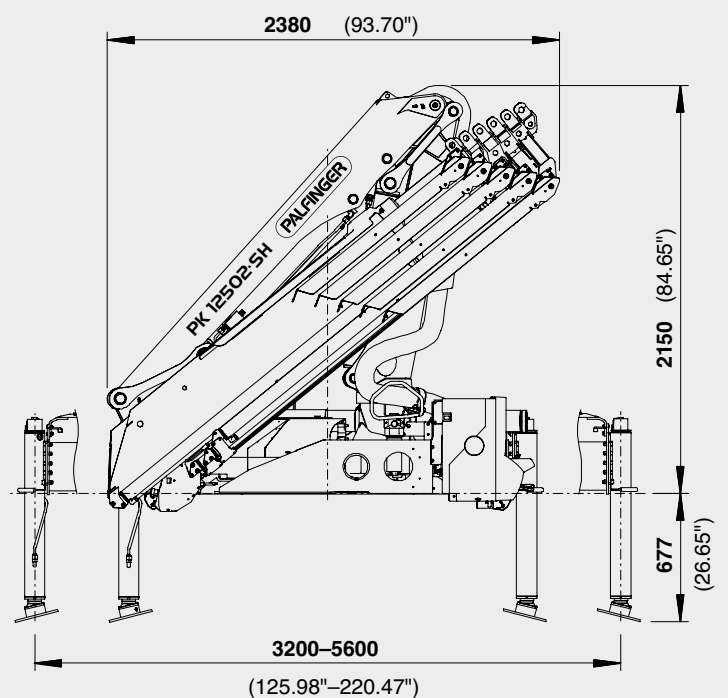
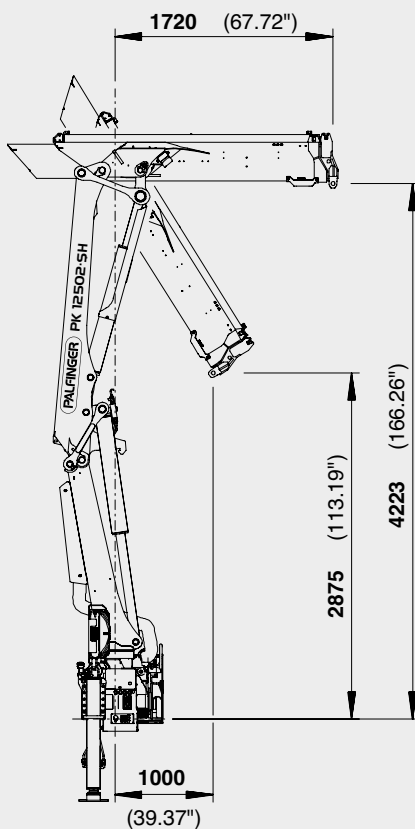
D	max.	5260 kg	51.6 kN
	4.0 m	13' 1"	2550 kg
	5.9 m	19' 4"	1600 kg
	7.8 m	25' 7"	1120 kg
	9.9 m	32' 6"	840 kg
	11.9 m	39' 1"	670 kg
	14.0 m	45' 9"	560 kg
	16.0 m*	52' 6"	380 kg

PERFECT DIMENSIONS

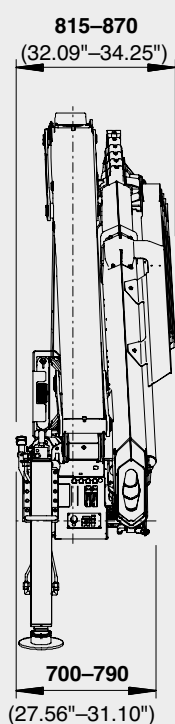
EXTENSION BOOM VARIATIONS



DIMENSIONS



PK 12502 SH



TECHNICAL SPECIFICATIONS (EN 12999 HC1 HD5/B3)

Max. lifting moment	11.4 mt/112.0 kNm	82600 ft.lbs
Max. lifting capacity	5700 kg/55.9 kN	12570 lbs
Max. hydraulic outreach	14.1 m	46' 3"
Max. manual outreach	16.1 m	52' 10"
Slewing angle	400°	
Slewing torque	1.3 mt/12.7 kNm	9370 ft.lbs
Stabiliser spread (std./max.)	3.2 m / 5.6 m	10' 6" / 18' 4"
Fitting space required (std.)	0.70 m	2' 4"
Width folded	2.38 m	7' 10"
Max. operating pressure	365 bar	5293 psi
Recommended pump capacity	from 45 l/min to 60 l/min	11.9 US gal./min 15.9 US gal./min
Dead weight (std.)	1160 kg	2557 lbs

