

PK 92002 SH

PALFINGER

LIFETIME EXCELLENCE

COPE WITH HEAVY-DUTY ASSIGNMENTS JUST AS EASILY AS WITH DELICATE INSTALLATIONS



LIFETIME EXCELLENCE

PALFINGER LOADER CRANES ARE CONVINCING DUE TO THEIR SUPERIOR LIFE-CYCLE PERFORMANCE. THEY ARE THE MOST ECONOMICAL AND ALSO THE MOST RELIABLE OVER THE ENTIRE PRODUCT LIFE. FROM SOLUTION FINDING TO RESALE.

BETTER
SOLUTIONS

BETTER
EFFICIENCY

BETTER
ERGONOMICS

HIGHER VALUE
RETENTION



HIGHER
AVAILABILITY

HIGHER
SERVICEABILITY

BETTER
ECOLOGY

MORE
RELIABILITY



OFFERS NUMEROUS COMFORT AND SAFETY FEATURES



- Maximum utilisation of the working range due to HPSC
- More lifting power due to S-HPLS
- High user friendliness due to radio remote control
- Perfect appearance and the highest value retention due to KTL
- More variety due to fly-jib



PERFECT TOOL WITH SOPHISTICATED KINEMATICS

12 HIGHLIGHTS



CONTINUOUS SLEWING SYSTEM
UNRESTRICTED MOVEMENT

More efficient in operation due to faster loading cycles, since the crane can be slewed over a shorter distance. The crane works more efficiently and faster.



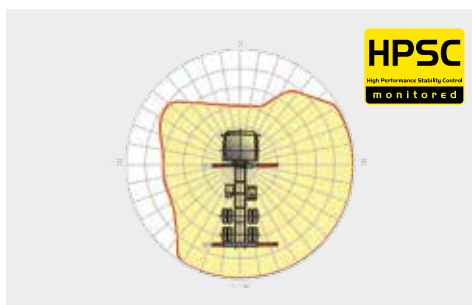
POWER LINK PLUS
HIGH VARIETY OF USES

With the 12-degree reverse linkage system, you can reach through low door openings and also work inside buildings. Heavy crane work – even in difficult conditions.



LOW-MAINTENANCE EXTENSION SYSTEM
REDUCES SERVICE TIME

With sliding elements made of synthetic material and the high-quality KTL coating, this boom system significantly simplifies service performed by the operator. This saves time and money – and protects the environment.



HPSC
MAXIMUM UTILISATION OF THE WORKING RANGE

The variable stabiliser positioning of the High Performance Stability Control System makes it possible to utilise the lifting capacity to the maximum. It enables working within tight spaces.



S-HPLS
MORE LIFTING POWER WHEN IT IS REALLY NEEDED

S-HPLS is one of the most important functions of the PALTRONIC 150. It is a fully automatic system for increasing the lifting power. Depending on the need, there is continuous adaptation of the lifting power and speed of the crane.



CONTROL TECHNOLOGY
COMMUNICATION WITH THE OPERATOR

New standards in operator friendliness through perfect interaction between PALTRONIC 150, control valve and radio remote control. The operator is guided clearly and safely.



POWER LINK CABLE WINCH
MORE COMFORT IN CABLE WINCH OPERATION

Characterised by low installation height, it is ideal for working inside buildings and transports with the crane boom unfolded. The Comfort Cable Routing reduces set-up times to a minimum.



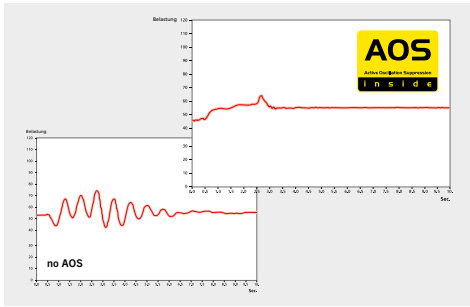
FUNCTIONAL DESIGN
PRACTICAL AND ATTRACTIVE

Robust plastic covers protect crane parts against dirt and damage. Better appearance and increased operational comfort – during the entire lifetime.



KTL – CATHODIC DIP PAINTING
FOR RETAINING HIGH VALUE

The UV-resistant coating guarantees long-term surface protection. Perfect appearance during the entire lifetime for maximum resale value.



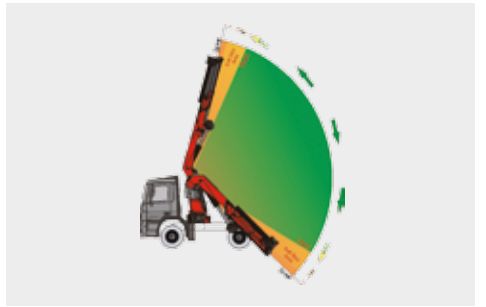
AOS
MAXIMUM PRECISION AND SAFETY

The active oscillation suppression system prevents "post-oscillation" in the event of rapid braking or load changes. The stress peaks on the extension boom system are reduced and material fatigue and wear are minimised. This increases the resale value.



DPS PLUS
MORE EFFICIENT FLY-JIB OPERATION

The Dual Power System allows multiple uses of the crane both for large outreaches as well as for heavy load operation.



SOFT STOP FUNCTION
MORE COMFORT AND SAFETY

The Soft Stop function is an electronic limit position damper. It causes gentle braking of all crane movements before the limit position is reached. Hence, jerky movements and load impacts can be avoided. The crane can be operated more gently and precisely.

KTL
protected

Paltronic 150
controlled

RRC
Radio Remote Control
operated

HPSC
High Performance Stability Control
monitored

AOS
Active Oscillation Suppression
inside

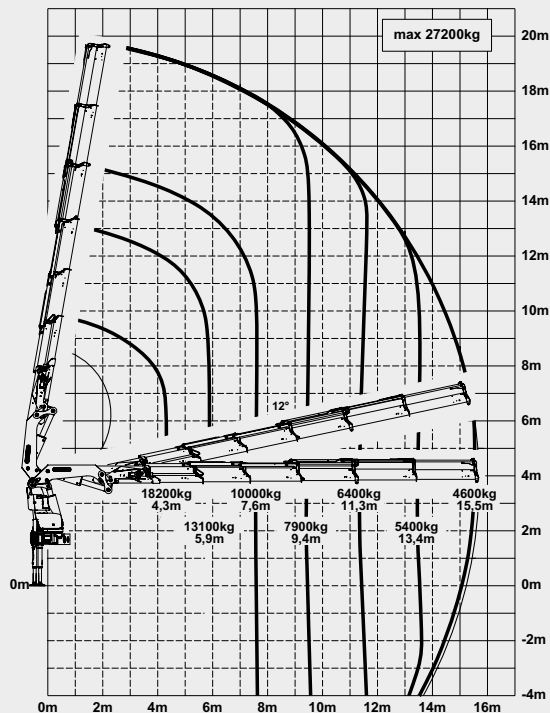
DPS plus
Dual Power System
activated

* Optional features / country-specific equipment

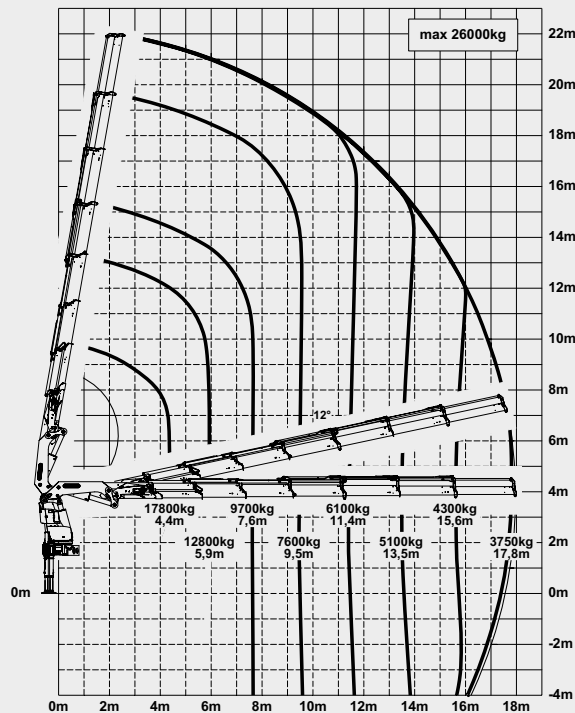
PK 92002 SH

HIGH PERFORMANCE

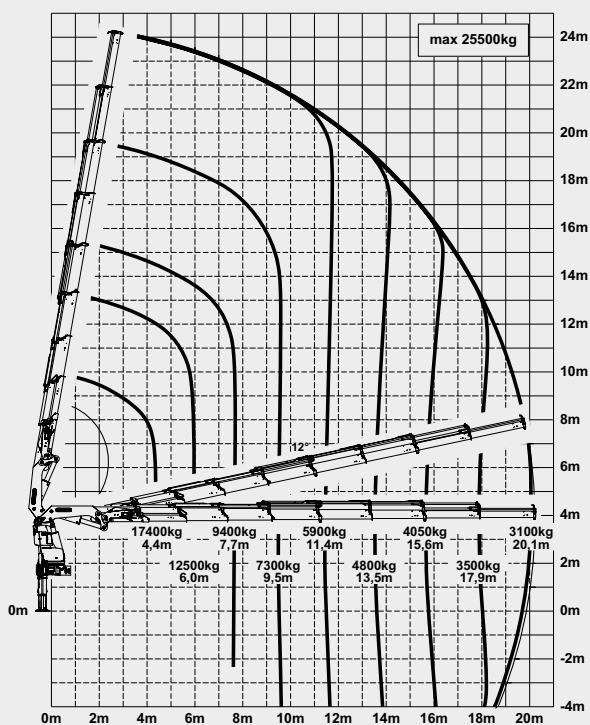
E



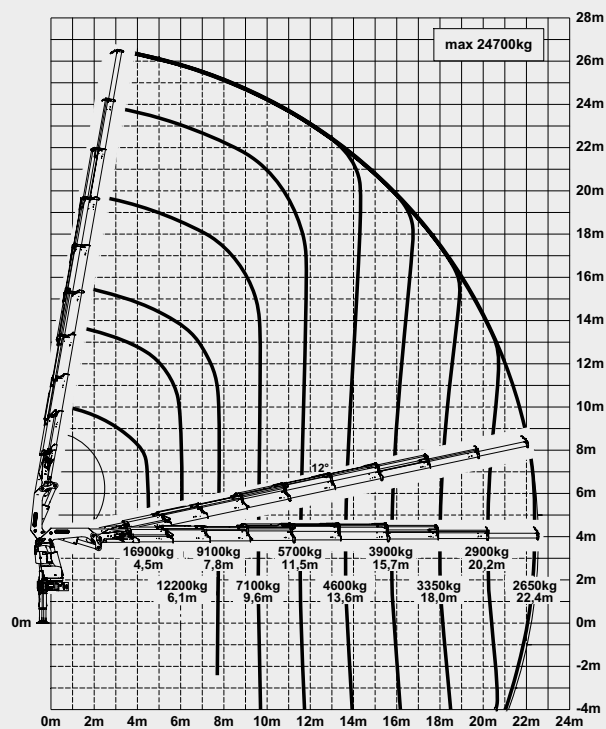
F



G

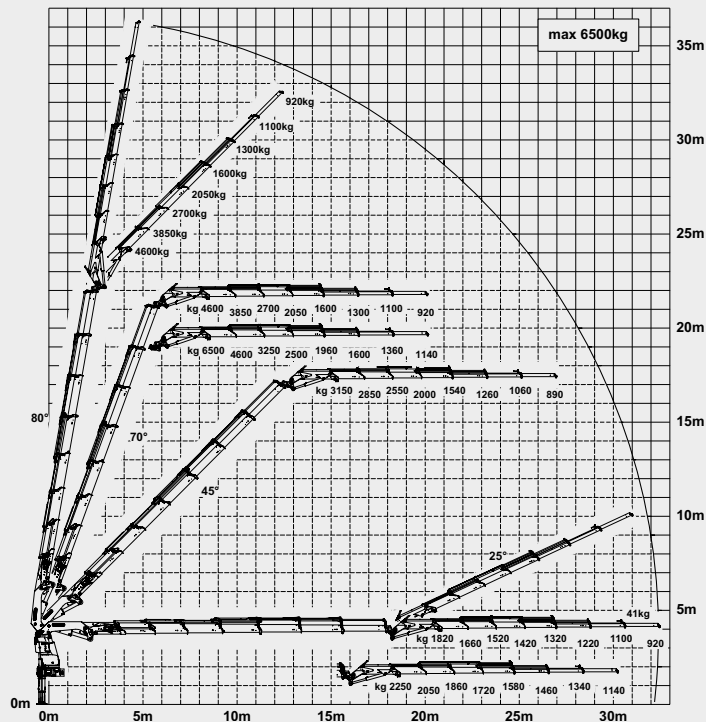


H

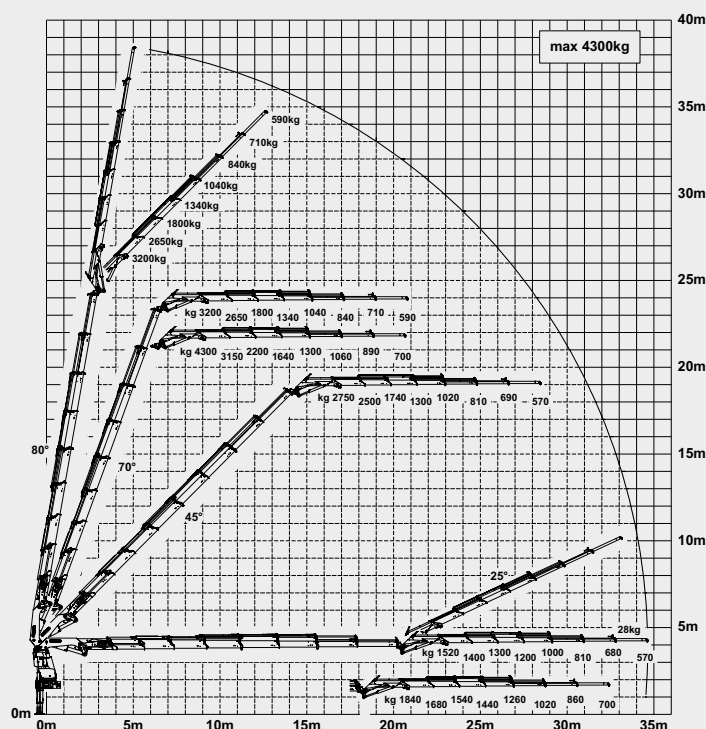


MORE LIFTING POWER WHEN IT IS REALLY NEEDED

F PJ170E JV1 DPS PLUS



G PJ125E JV1 DPS PLUS



LIFTING CAPACITIES

A	max.	30000 kg	66200 lbs
	4.0 m	13' 1"	20500 kg
	5.6 m	18' 4"	15000 kg
	7.3 m	23' 11"	11600 kg

B	max.	29800 kg	65700 lbs
	4.1 m	13' 5"	20100 kg
	5.6 m	18' 4"	14600 kg
	7.3 m	23' 11"	11200 kg
	9.1 m	29' 10"	9000 kg

C	max.	29000 kg	64000 lbs
	4.1 m	13' 5"	19400 kg
	5.7 m	18' 8"	14100 kg
	7.4 m	24' 3"	10800 kg
	9.2 m	30' 2"	8600 kg
	11.1 m	36' 5"	7100 kg

D	max.	27800 kg	61300 lbs
	4.2 m	13' 9"	18800 kg
	5.8 m	19' 0"	13600 kg
	7.5 m	24' 7"	10400 kg
	9.3 m	30' 6"	8200 kg
	11.2 m	36' 9"	6800 kg
	13.3 m	43' 8"	5700 kg

E	max.	27200 kg	60000 lbs
	4.3 m	14' 1"	18200 kg
	5.9 m	19' 4"	13100 kg
	7.6 m	24' 11"	10000 kg
	9.4 m	30' 10"	7900 kg
	11.3 m	37' 1"	6400 kg
	13.4 m	43' 12"	5400 kg
	15.5 m	50' 10"	4600 kg

F	max.	26000 kg	57300 lbs
	4.4 m	14' 5"	17800 kg
	5.9 m	19' 4"	12800 kg
	7.6 m	24' 11"	9700 kg
	9.5 m	31' 2"	7600 kg
	11.4 m	37' 5"	6100 kg
	13.5 m	44' 3"	5100 kg
	15.6 m	51' 2"	4300 kg
	17.8 m	58' 5"	3750 kg

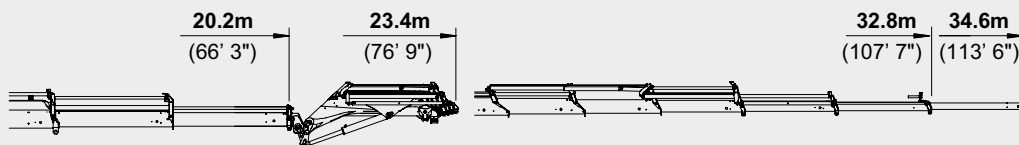
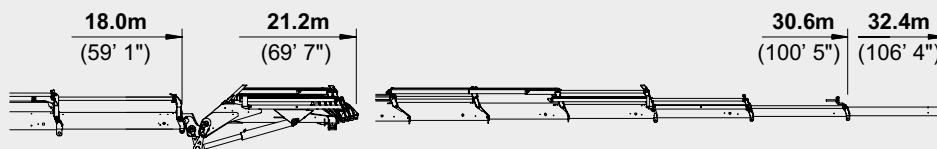
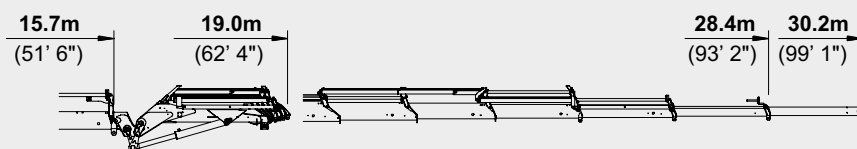
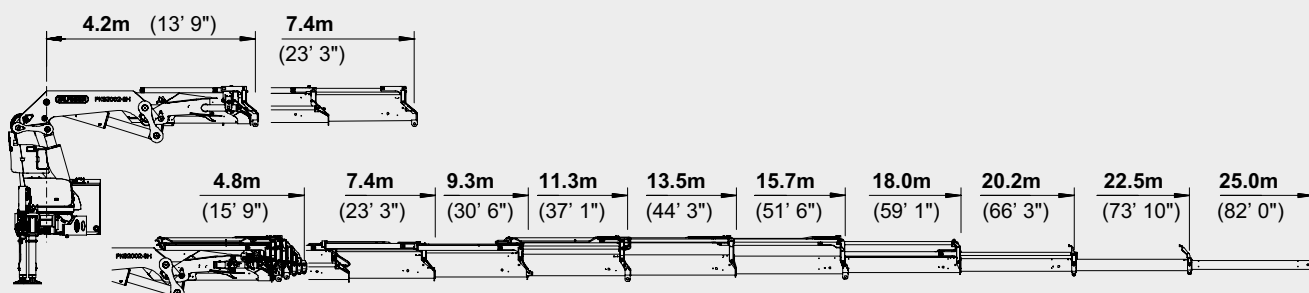
G	max.	25500 kg	56200 lbs
	4.4 m	14' 5"	17400 kg
	6.0 m	19' 8"	12500 kg
	7.7 m	25' 3"	9400 kg
	9.5 m	31' 2"	7300 kg
	11.4 m	37' 5"	5900 kg
	13.5 m	44' 3"	4800 kg
	15.6 m	51' 2"	4050 kg
	17.9 m	58' 9"	3500 kg
	20.1 m	65' 11"	3100 kg

H	max.	24700 kg	54500 lbs
	4.5 m	14' 9"	16900 kg
	6.1 m	20' 0"	12200 kg
	7.8 m	25' 7"	9100 kg
	9.6 m	31' 6"	7100 kg
	11.5 m	37' 9"	5700 kg
	13.6 m	44' 7"	4600 kg
	15.7 m	51' 6"	3900 kg
	18.0 m	59' 1"	3350 kg
	20.2 m	66' 3"	2900 kg
	22.4 m	73' 6"	2650 kg
	24.9 m*	81' 8"	2100 kg

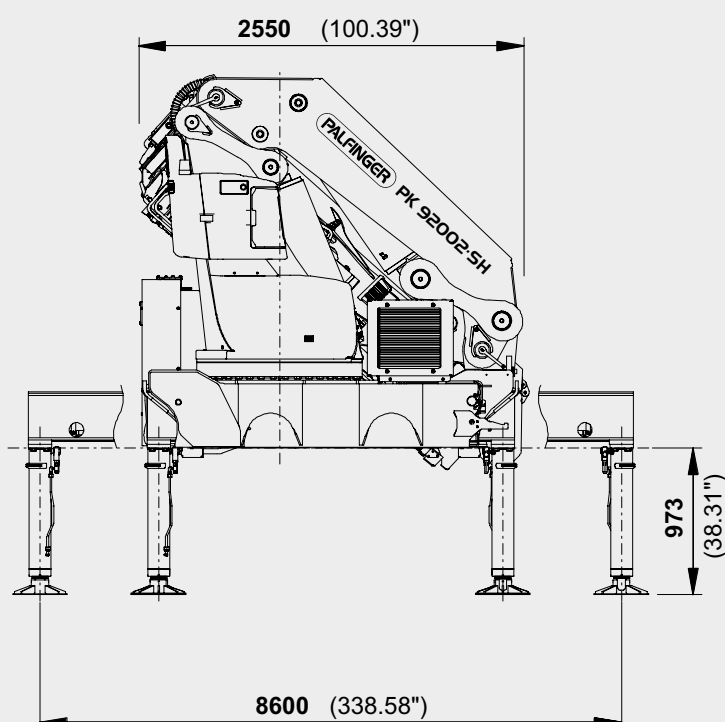
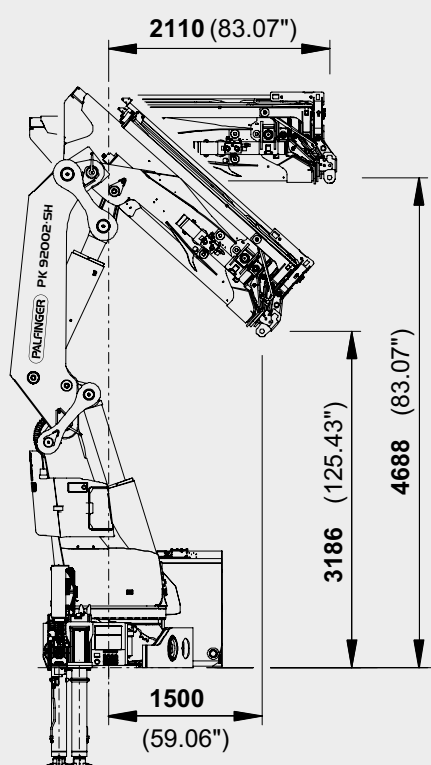
*mechanical extension

PERFECT DIMENSIONS

EXTENSION BOOM VARIATIONS



DIMENSIONS



PK 92002 SH

E PJ170E JV1

F PJ170E JV1 DPS PLUS

G PJ125E JV1 DPS PLUS

TECHNICAL SPECIFICATIONS (EN 12999 HC1 HD5/B3)

Max. lifting moment	85.5 mt/838.8 kNm	618620 ft.lbs
Max. lifting capacity	30000 kg/294.3 kN	66200 lbs
Max. hydraulic outreach	22.5 m	73' 10"
Max. manual outreach	25.0 m	82' 0"
Max. outreach (with fly-jib)	34.6 m	113' 6"
Slewing angle	endless	
Slewing torque	7.7 mt/75.5 kNm	55710 ft.lbs
Stabiliser spread	8.6 m	28' 3"
Fitting space required (min./max.)	1.65 m/1.92 m	5' 5"/6' 3"
Width folded	2.55 m	8' 4"
Max. operating pressure	365 bar	5293 psi
Recommended pump capacity	from 110 l/min	29.1 US gal./min
	to 130 l/min	34.3 US gal./min
Dead weight (std.)	6780 kg	14950 lbs

