

PK 63002 EH

PALFINGER

LIFETIME EXCELLENCE

THE COUNTINOUS SLEWING SYSTEM INCREASES THE EFFICIENCY IN USE DURING THE CRANE'S ENTIRE LIFETIME.



PROFITABLE HEAVY-DUTY CRANE TECHNOLOGY





-
- More lifting power due to E-HPLS
 - Maximum utilisation of the working range thanks to HPSC
 - Additional applications due to Power Link Plus
 - Continuous slewing for increased efficiency and speed
 - Increased operating times due to low maintenance extensions system



FIRST-RATE IN DESIGN AND PERFORMANCE



CONTINUOUS SLEWING SYSTEM
UNRESTRICTED MOVEMENT

More efficient in operation due to faster loading cycles, since the crane can be slewed over a shorter distance. The crane works more efficiently and faster.



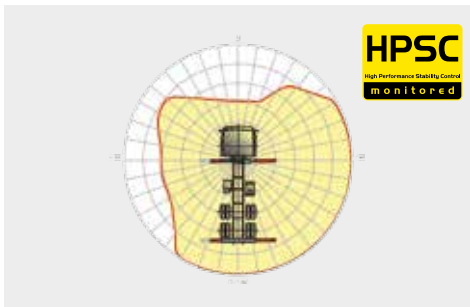
POWER LINK PLUS
HIGH VARIETY OF USES

With the 15-degree reverse linkage system, you can reach through low door openings and also work inside buildings. Heavy crane work – even in difficult conditions.



LOW-MAINTENANCE EXTENSION SYSTEM
REDUCES SERVICE TIME

With sliding elements made of synthetic material and the high-quality KTL coating, this boom system significantly simplifies service performed by the operator. This saves time and money – and protects the environment.



HPSC
MAXIMUM UTILISATION OF THE WORKING RANGE

The variable stabiliser positioning of the High Performance Stability Control System makes it possible to utilise the lifting capacity to the maximum. It enables working within tight spaces.



HIGH SPEED EXTENSION
FOR EFFICIENT ASSIGNMENTS

The High Speed Extension speeds up the extension boom system. Crane works faster and more efficiently.



RADIO REMOTE CONTROL
DIALOGUE WITH THE OPERATOR

PALFINGER radio remote controls are equipped with linear lever or cross lever and provide the greatest possible comfort for the operator. All EH models with LED-Display inform the crane operator about the different operating conditions.



POWER LINK CABLE WINCH
MORE COMFORT IN CABLE WINCH OPERATION

Characterised by low installation height, it is ideal for working inside buildings and transports with the crane boom unfolded. The Comfort Cable Routing reduces set-up times to a minimum.



FUNCTIONAL DESIGN
PRACTICAL AND ATTRACTIVE

Robust plastic covers protect crane parts against dirt and damage. Better appearance and increased operational comfort – during the entire lifetime.



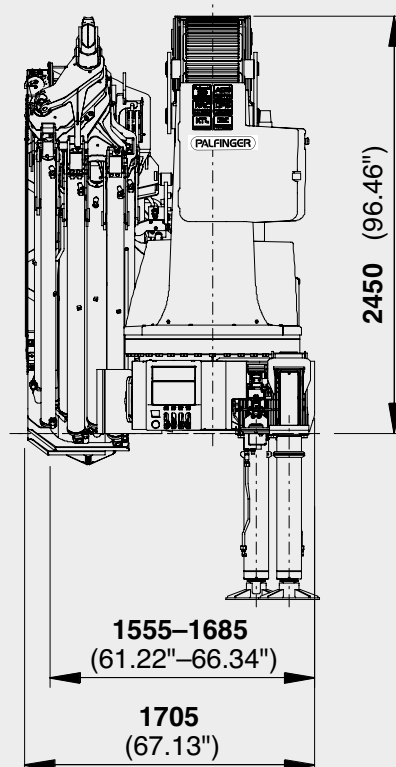
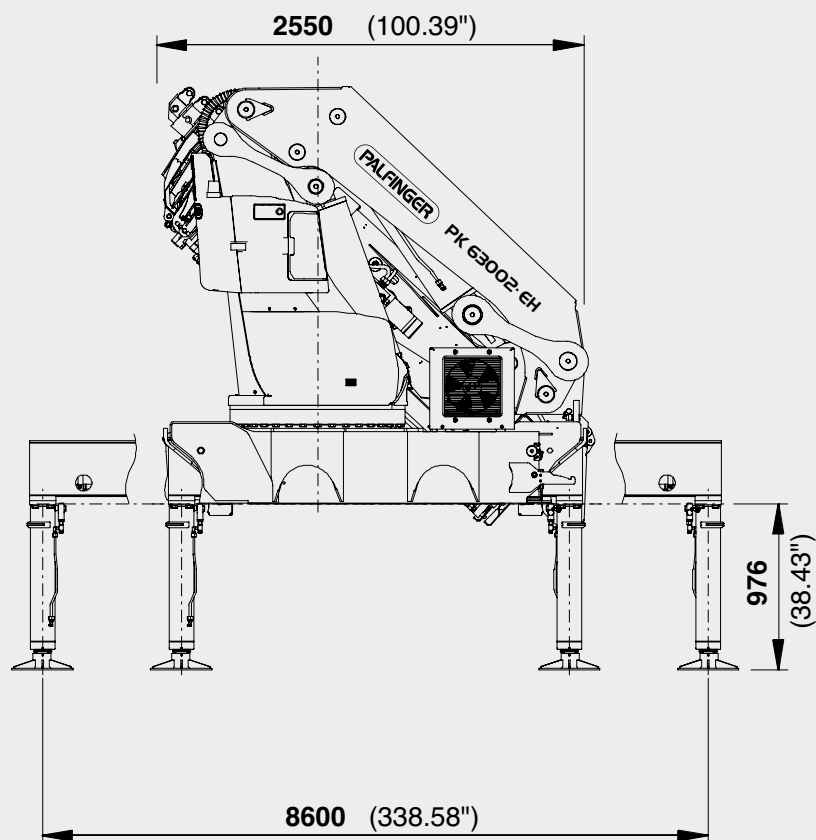
KTL – CATHODIC DIP PAINTING
FOR RETAINING HIGH VALUE

The UV-resistant coating guarantees long-term surface protection. Perfect appearance during the entire lifetime for maximum resale value.

* Optional features / country-specific equipment

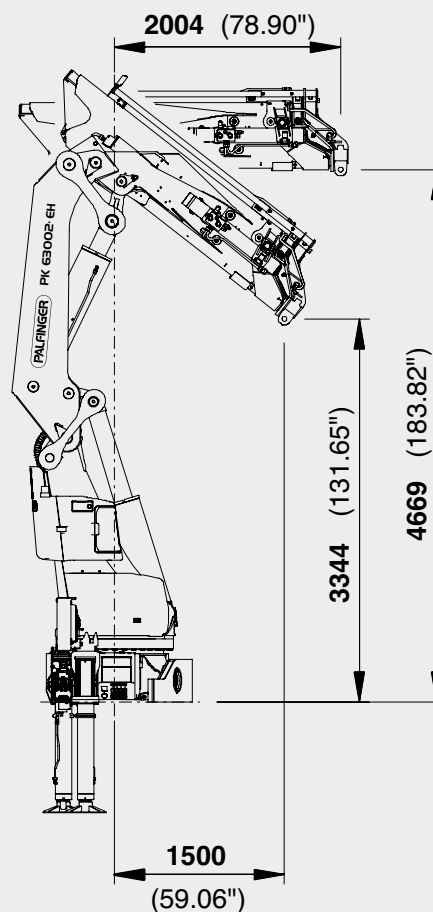


PERFECT DIMENSIONS



TECHNICAL SPECIFICATIONS (EN12999 HC1 HD4/B3)

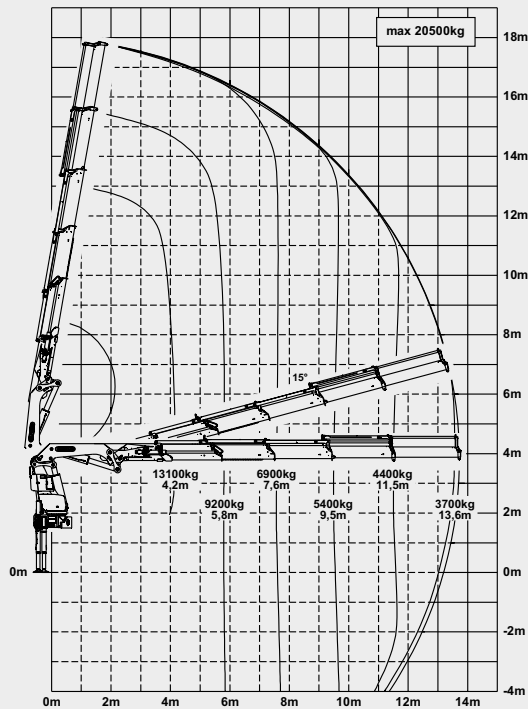
Max. lifting moment	59.4 mt/582.7 kNm	429740 ft.lbs
Max. lifting capacity	22000 kg/215.8 kN	48500 lbs
Max. hydraulic outreach	20.4 m	66' 11"
Max. manual outreach	25.1 m	82' 4"
max. outreach (with fly-jib)	30.4 m	99' 9"
Slewing angle	endless	
Slewing torque 1 gear	4.5 mt/44.1 kNm	32560 ft.lbs
Slewing torque 2 gears	7.0 mt/68.7 kNm	50640 ft.lbs
Stabiliser spread	8.6 m	28' 3"
Fitting space required (min. / max.)	1.56 m / 5' 1"	1.71 m / 5' 7"
Width folded	2.55 m	8' 4"
Max. operating pressure	350 bar	5075 psi
Recommended pump capacity	from 80 l/min	21.1 US gal./min
	to 100 l/min	26.4 US gal./min
Dead weight (std.)	5040 kg	11110 lbs



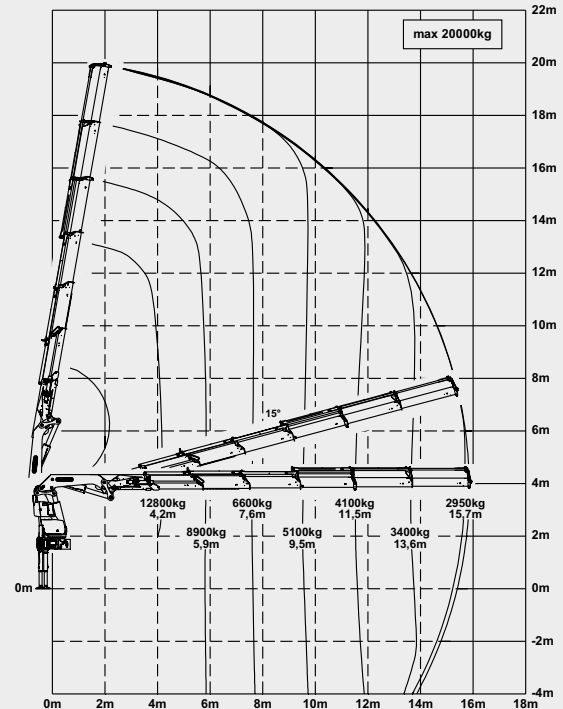
PK 63002

HIGH PERFORMANCE

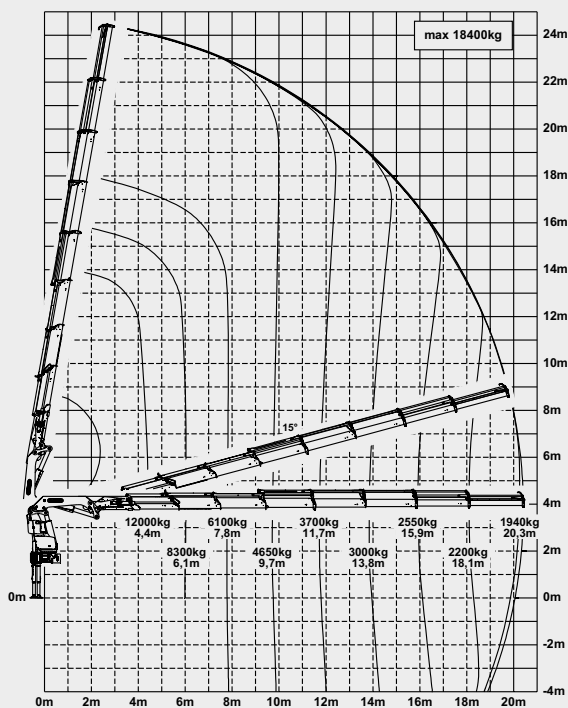
D



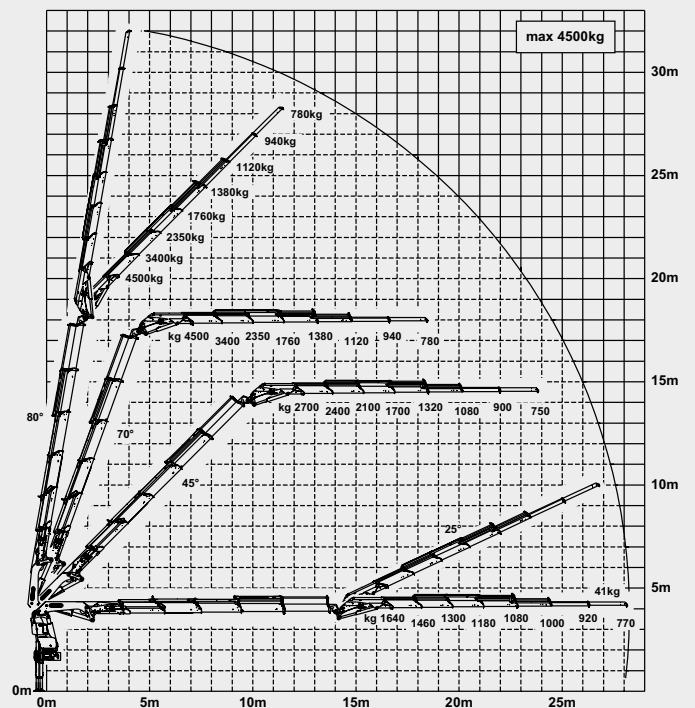
E



G

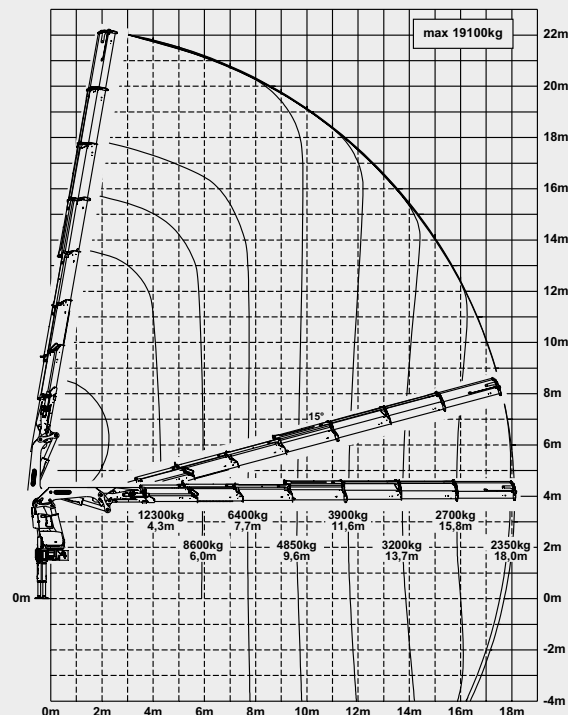


D PJ170E JV1

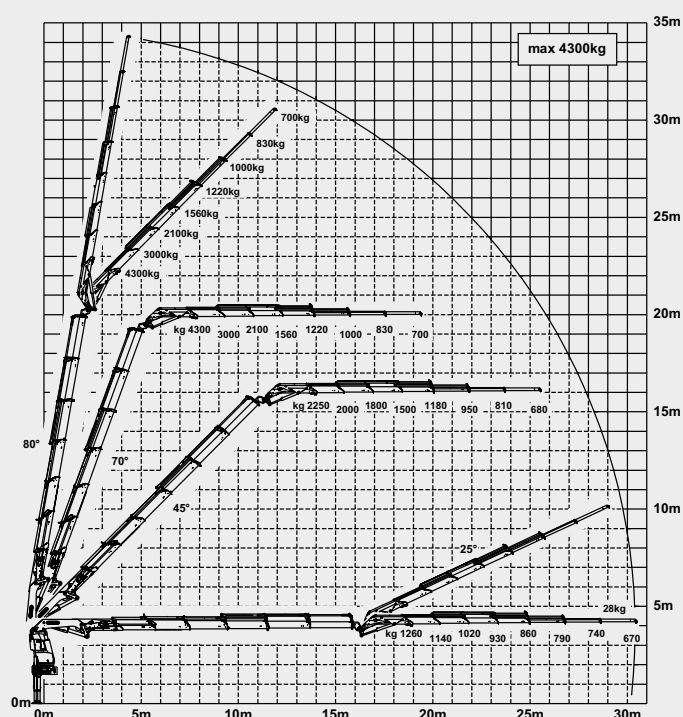


PERFECT FOR HIGH OUTREACHES

F



E PJ125E JV1



LIFTING CAPACITIES

A	max.	21800 kg	48100 lbs
	4.0 m	13 ft	14200 kg
	5.7 m	19 ft	10200 kg
	7.4 m	24 ft	7900 kg

B	max.	21500 kg	47400 lbs
	4.1 m	13 ft	13900 kg
	5.7 m	19 ft	9900 kg
	7.5 m	24 ft	7500 kg
	9.4 m	31 ft	6000 kg

C	max.	21300 kg	47000 lbs
	4.1 m	13 ft	13700 kg
	5.7 m	19 ft	9600 kg
	7.5 m	24 ft	7300 kg
	9.4 m	31 ft	5800 kg
	11.4 m	37 ft	4750 kg

D	max.	20500 kg	45200 lbs
	4.2 m	13 ft	13100 kg
	5.8 m	19 ft	9200 kg
	7.6 m	25 ft	6900 kg
	9.5 m	31 ft	5400 kg
	11.5 m	38 ft	4400 kg
	13.6 m	45 ft	3700 kg

E	max.	20000 kg	44100 lbs
	4.2 m	14 ft	12800 kg
	5.9 m	19 ft	8900 kg
	7.6 m	25 ft	6600 kg
	9.5 m	31 ft	5100 kg
	11.5 m	38 ft	4100 kg
	13.6 m	45 ft	3400 kg
	15.7 m	52 ft	2950 kg

F	max.	19100 kg	42100 lbs
	4.3 m	14 ft	12300 kg
	6.0 m	20 ft	8600 kg
	7.7 m	25 ft	6400 kg
	9.6 m	32 ft	4850 kg
	11.6 m	38 ft	3900 kg
	13.7 m	45 ft	3200 kg
	15.8 m	52 ft	2700 kg
	18.0 m	59 ft	2350 kg

G	max.	18400 kg	40600 lbs
	4.4 m	14 ft	12000 kg
	6.1 m	20 ft	8300 kg
	7.8 m	26 ft	6100 kg
	9.7 m	32 ft	4650 kg
	11.7 m	38 ft	3700 kg
	13.8 m	45 ft	3000 kg
	15.9 m	52 ft	2550 kg
	18.1 m	59 ft	2200 kg
	20.3 m	66 ft	1940 kg
	22.6 m*	74 ft	1660 kg
	24.9 m*	82 ft	1000 kg

