

PK 40001 EL

Performance

PALFINGER



THE PERFECT ASSEMBLY CRANE



MAXIMUM STABILITY THANKS TO THE HYDRAULICALLY EXTENDABLE COUNTERWEIGHT

At joinery, roofing and assembly firms and in many other sectors where long arm lengths and rapid movements are required the PK 40001 EL *Performance* can handle any job efficiently and cost-effectively.

An endless slewing mechanism with two slewing gears and the POWER LINK PLUS endow the crane with maximum mobility. The winch with a lifting capacity of up to 3.5 tonnes impresses with its high working speed.



OPTIMAL OUTREACH IN DAILY DUTY



MORE FLEXIBILITY THROUGH THE POWER LINK PLUS

POWER LINK PLUS

This knuckle boom specially developed by PALFINGER which can be angled upwards by 8 degrees stands out by virtue of excellent movement geometry. Even in the tightest spaces difficult crane jobs can be carried out without any problems.



KTL – the cathodic paint system

The shot-blasted crane parts are covered in zinc phosphate in an immersion process and coated electro-statically. The subsequent two-component top coating of paint provides a surface protection which in the past was usually only found in the car industry.



Internally routed oil passages

The internally routed oil passages make it possible to have a compact design for the extension system and ensure perfect protection from damage.

Advanced Package

- Oil cooler mounted
- Electronic HPLS
- Capacity display on control console
- PALFINGER radio control
- PALTRONIC 50
- Functional Design

Load-holding valves

They prevent the crane arm from dropping and are fitted as standard onto the slewing mechanism, elevating arm, and extension cylinders. The valves are positioned in such a way that they are protected from being damaged.



Outriggers

The PK 40001 EL *Performance* comes without outriggers. This means that – depending on the mounting concept – the ideal outrigger solution can be achieved with additional, customised outriggers.



THE STANDARD ENDLESS SLEWING MECHANISM



Cable winch

The cable winch mounted on the side of the crane boom stands out by virtue of its low overall height, a lifting capacity of 2.75 to 3.5 tonnes and the cable speed of 70 m/min.

Return oil utilisation

The high speed of the extension system is impressive. It results from return oil utilization feature, which is installed as standard, and the generously dimensioned hydraulic pipes. This makes for increased efficiency during all types of working!

Hose equipment for accessories

With this option you can provide the oil supply for boom tip accessories. The hoses are routed in compact troughs and plastic link chains. Optimal protection is achieved.

AOS

The Active Oscillation Suppression system, which is available exclusively from PALFINGER, compensates for jolts and sharp stress cycles caused by crane operation. Because oscillations are eradicated, the crane can work with pin-point accuracy, much more quickly and therefore more cost-efficiently.

Endless slewing mechanism

The endless slewing mechanism, which is equipped as standard with two slewing drives, permits an unrestricted radius of operation and produces a high slewing torque. As a result the crane operations are more efficient.

Extendable counterweight

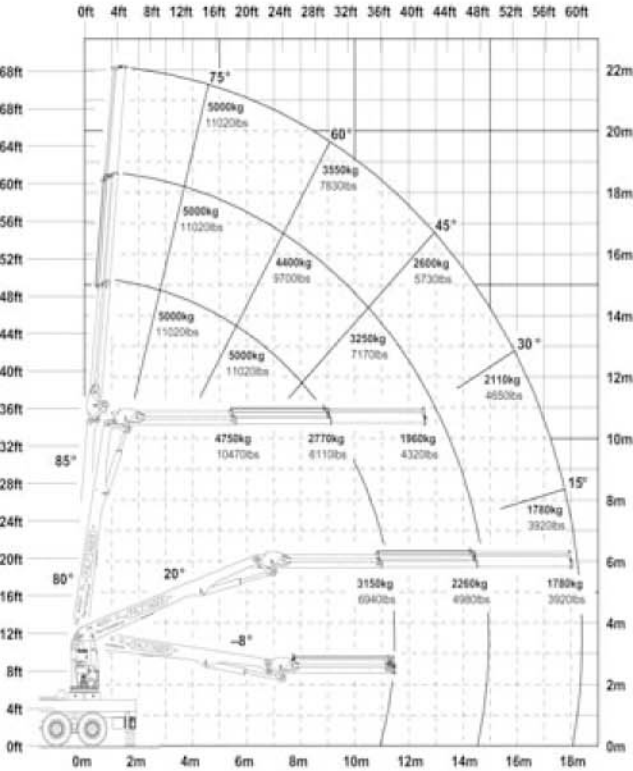
If necessary, a counterweight of 2.3 or 4.2 tonnes can be mounted to increase stability.



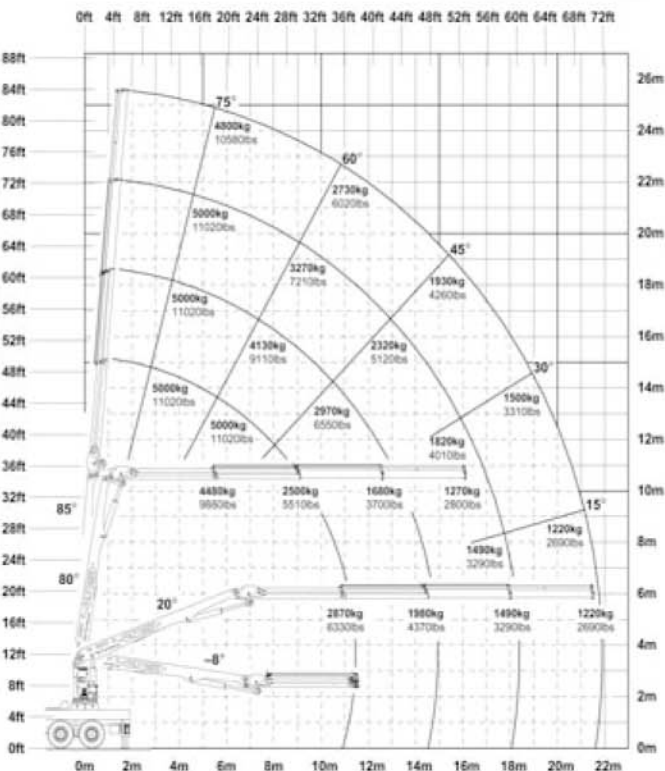
PK 40001 EL PERFORMANCE – A FIRM GRIP ON ANY SITUATION

PK 40001 EL Performance

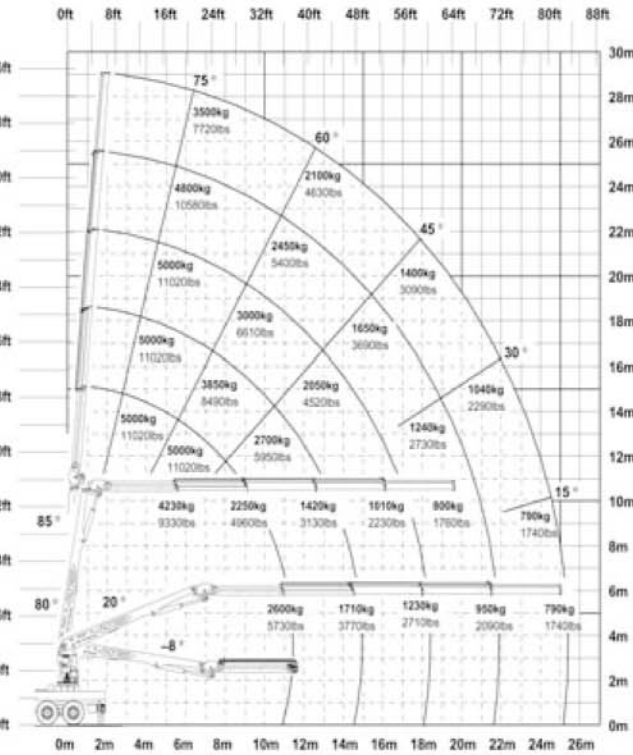
A



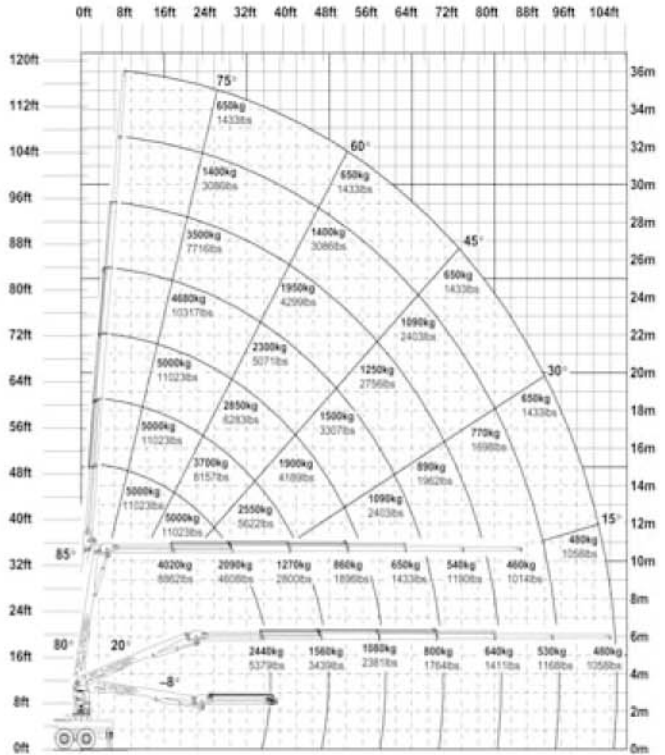
B



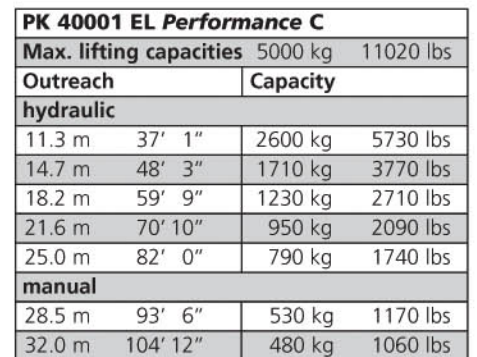
C



CV2

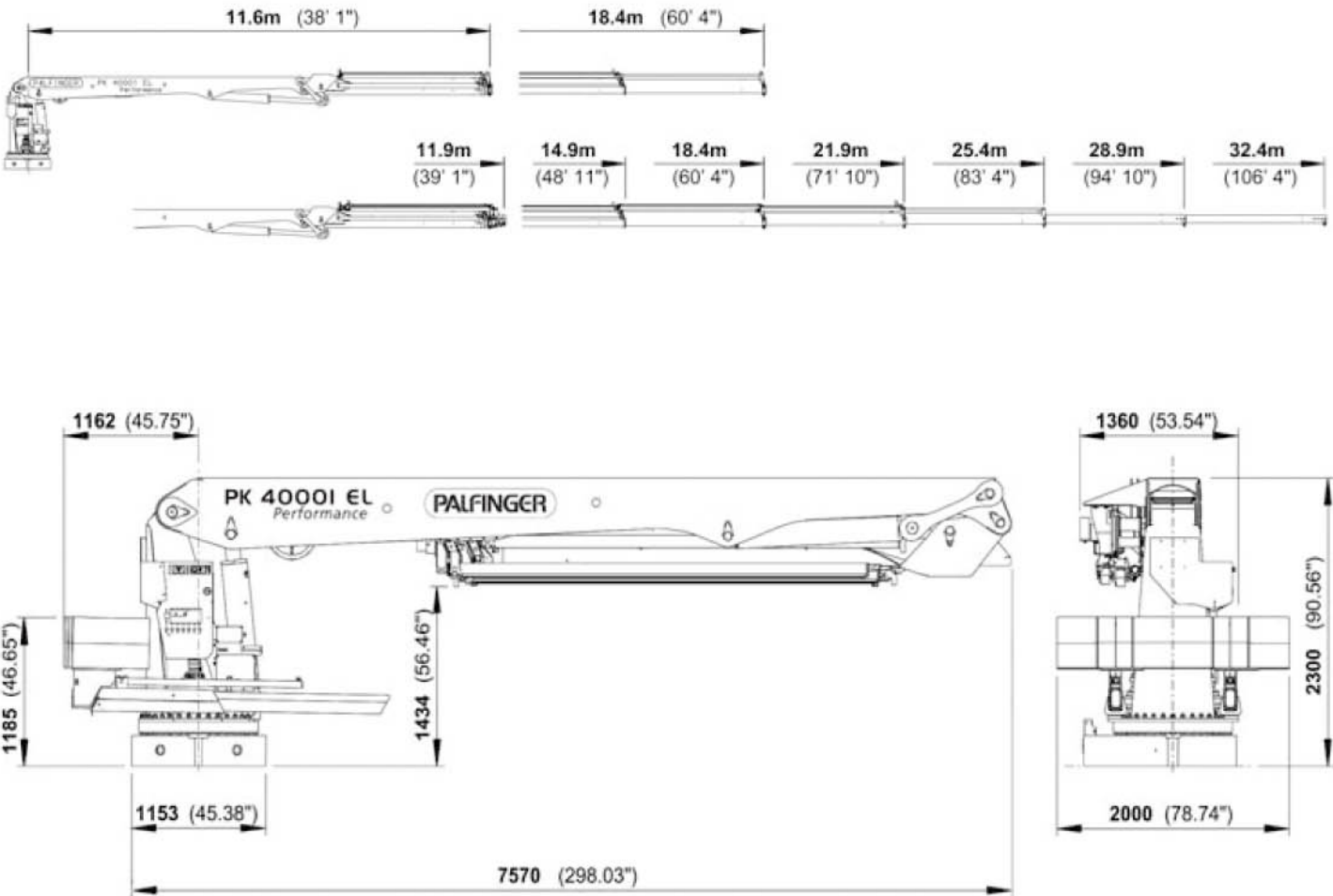


A red PK 4000 S crane is shown lifting a stack of wooden pallets. The crane's boom is extended upwards, and a red lifting arm is positioned to lift the stack. The stack consists of several wooden pallets, some of which are wrapped in plastic. The crane is mounted on a blue base, and a yellow container is visible in the bottom left corner. The background is a clear blue sky.



The outreaches stated are with a boom angle of 20° and are therefore not the maximum.

OUTSTANDING MOVEMENT GEOMETRY



PK 40001 EL Performance			
Technical Specifications (EN 12999 H1-B3)			
Max. lifting moment	39.2 mt/385.0 kNm	283860 ft.lbs	
Max. lifting capacity	5000 kg/49.1 kN	11020 lbs	
Max. hydraulic outreach	25.4 m	83' 4"	
Max. manual outreach	32.4 m	106' 4"	
Slewing angle	endless		

PK 40001 EL Performance			
Standard crane			
Slewing torque	7.0 mt/68.7 kNm	50650 ft.lbs	
Width folded	1.36 m	4' 6"	
Max. operating pressure	330 bar	4785 psi	
Recommended pump capacity with RC- and LS-system	from 80 l/min	17.6 imp.gal./min	21.1 US gal./min
	to 100 l/min	22.0 imp.gal./min	26.4 US gal./min
Dead weight standard crane	3500 kg	7720 lbs	
Counterweight standard crane (optional)	2300 kg	5070 lbs	
	4200 kg	9260 lbs	

Applications shown in the leaflet do not always correspond to the standard specifications. Design and specification are subject to change without prior notice.

