

PK 13500T / PK 15500T-EH PK 17500T / PK 19500T-EH

High Performance

PALFINGER CRANE

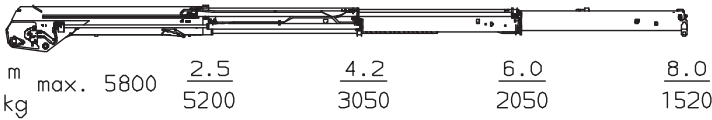


Compact top performer for breakdown and recovery service

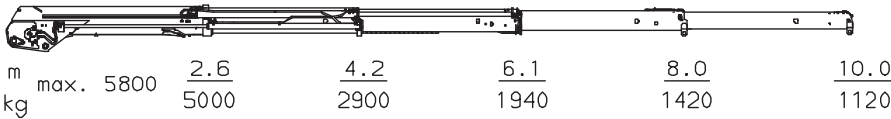
The T models have been developed specifically for the varied requirements of breakdown and recovery services. They are impressive by virtue of detailed solutions such as the laterally arranged extension cylinders which guarantee a low overall height of the vehicle when the main boom is extended. A second control panel enables a perfect view of the platform. The radio remote control and electronic HPLS fitted as standard on the PK 15500T EH/PK 19500T EH also make day-to-day assignments easier.

PK 13500T *High Performance*

B



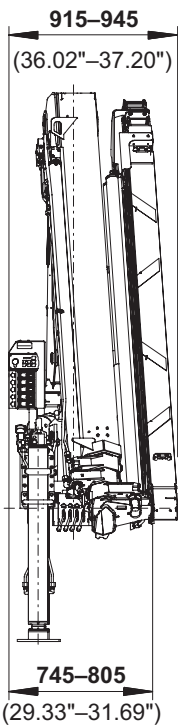
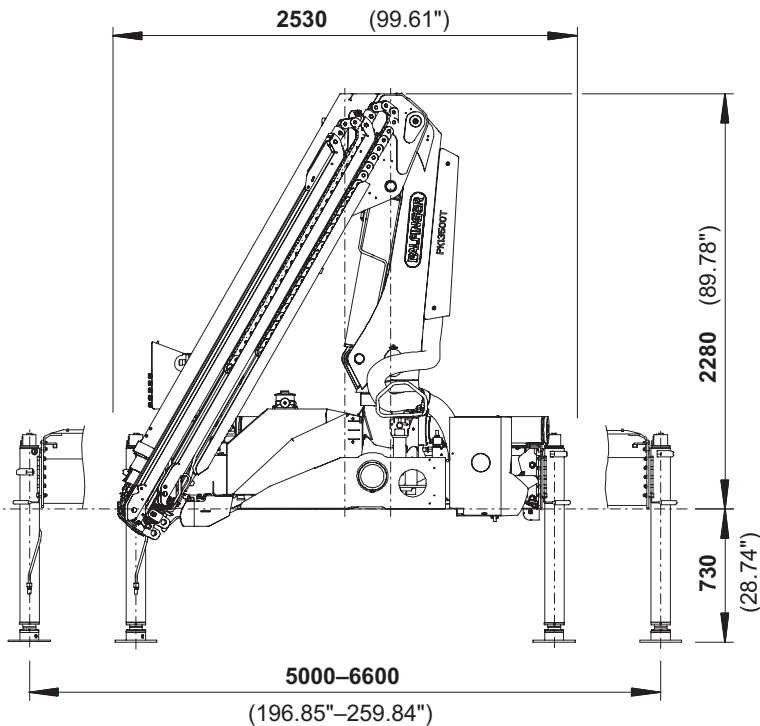
C



Technical Specifications (EN 12999 HC1 HD4/B3)

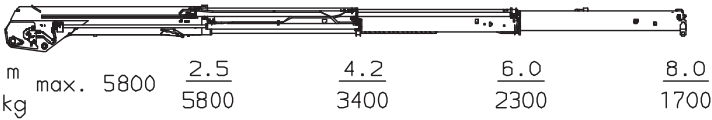
Max. lifting moment	13.3 mt/130.6 kNm	96320 ft.lbs
Max. lifting capacity	5800 kg/56.9 kN	12800 lbs
Max. hydraulic outreach	10.0 m	32' 10"
Slewing angle	420 °	
Slewing torque	2.2 mt/22.0 kNm	16210 ft.lbs

Stabilizer spread	std. 5.0 m/16' 5"	max. 6.6 m/21' 8"
Fitting space required (std.)	0.75 m	2' 5"
Width folded	2.53 m	8' 4"
Max. operating pressure	320 bar	4640 psi
Recommended pump capacity	from 35 l/min to 45 l/min	9.2 US gal./min to 11.9 US gal./min
Dead weight (std.)	1420 kg	3130 lbs

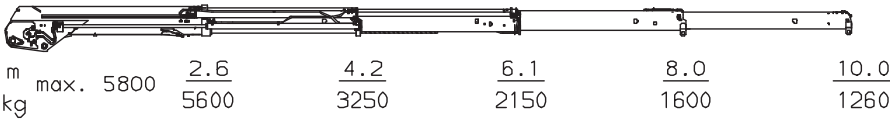


PK 15500T EH *High Performance*

B

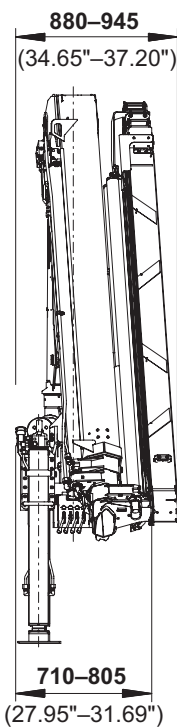
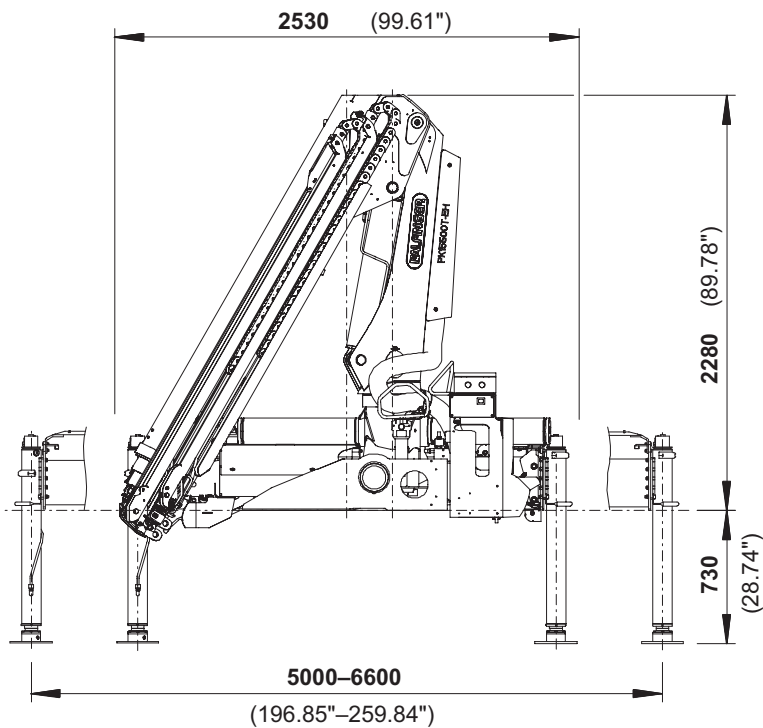


C



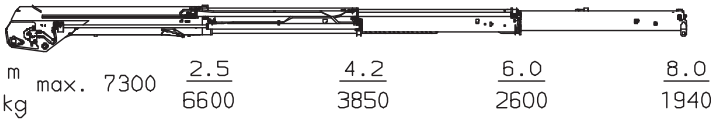
Technical Specifications (EN 12999 HC1 HD4/B3)

Max. lifting moment	14.7 mt/144.3 kNm	106420 ft.lbs
Max. lifting capacity	5800 kg/56.9 kN	12800 lbs
Max. hydraulic outreach	10.0 m	32' 10"
Slewing angle	420 °	
Slewing torque	2.2 mt/22.0 kNm	16210 ft.lbs
Stabilizer spread	std. 5.0 m/16' 5"	max. 6.6 m/21' 8"
Fitting space required (std.)	0.71 m	2' 4"
Width folded	2.53 m	8' 4"
Max. operating pressure	350 bar	5075 psi
Recommended pump capacity	from 40 l/min to 60 l/min	10.6 US gal./min to 18.5 US gal./min
Dead weight (std.)	1440 kg	3170 lbs

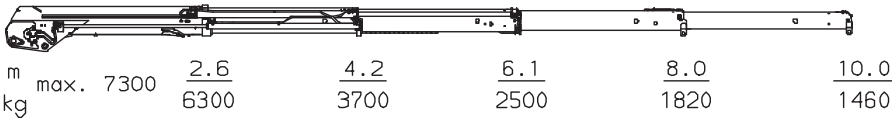


PK 17500T High Performance

B



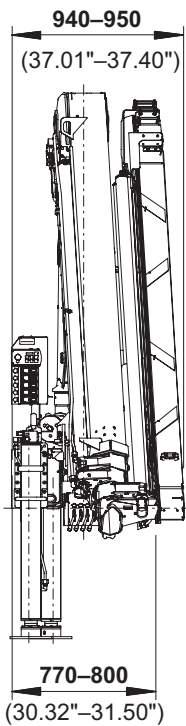
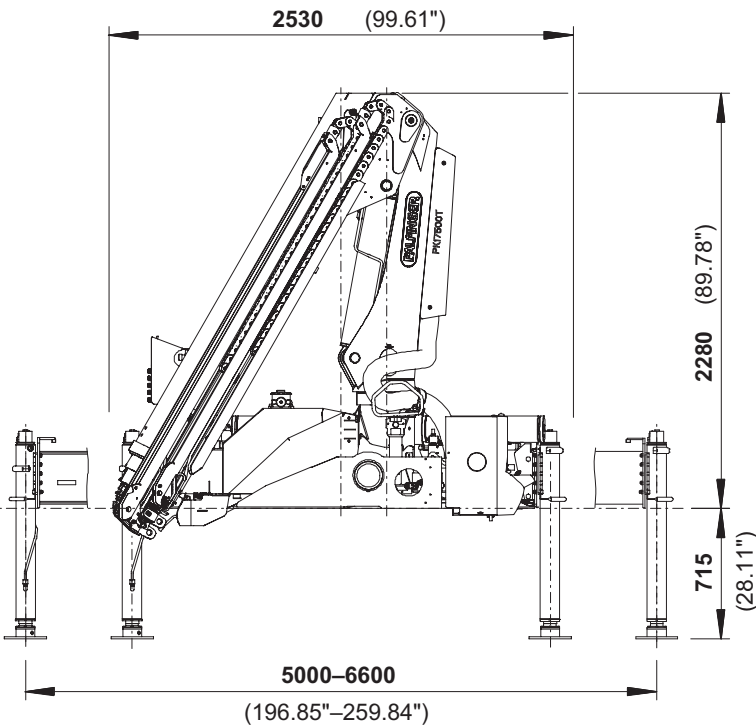
C



Technical Specifications (EN 12999 HC1 HD4/B3)

Max. lifting moment	16.8 mt/164.6 kNm	121390 ft.lbs
Max. lifting capacity	7300 kg/71.6 kN	16100 lbs
Max. hydraulic outreach	10.0 m	32' 10"
Slewing angle	420 °	
Slewing torque	2.5 mt/24.4 kNm	17960 ft.lbs

Stabilizer spread	std. 5.0 m/16' 5"	max. 6.6 m/21' 8"
Fitting space required (std.)	0.77 m	2' 6"
Width folded	2.53 m	8' 4"
Max. operating pressure	320 bar	4640 psi
Recommended pump capacity	from 40 l/min to 50 l/min	10.6 US gal./min 13.2 US gal./min
Dead weight (std.)	1560 kg	3440 lbs



Powerful arguments



Working lights

A working light (halogen or LED) is available on request to keep the entire work area well lit.

Stabilizer supports and stabilizers that can be pivoted upwards (optional)

The newly developed, fully-automated swivel stabilizers can be pivoted upwards through 180 degrees. All stabilizers are fitted as standard with ball jointed stabilizer plates pivotable through 10 degrees.



Laterally arranged cylinders

The laterally arranged cylinders enable a low overall height when the extension system is extended.

Lighting pack

The control panel is available with lighting and backlit icons on request. LED warning lights are attached to the supporting cylinders to ensure better visibility.



Low installation height

The extension booms are only 165 mm below the installation level. This means that no additional work is necessary, e.g. moving the battery box on the truck.

KTL Cathodic dip painting

The shot-blasted crane parts are covered in zinc phosphate in an immersion process and coated electrostatically. The subsequent two-pack top coat of paint provides a surface protection which was generally only found in the automotive industry in the past.



Control panel on cross beam (PK 13500T / PK 17500T)

The second control panel is mounted upright on the cross beam with vertical levers. This enables a perfect view of the platform.

Low-maintenance extension system

With sliding elements made of synthetic material and the high-quality KTL coating, this boom system significantly simplifies service performed by the operator. This saves time and money – and protects the environment.

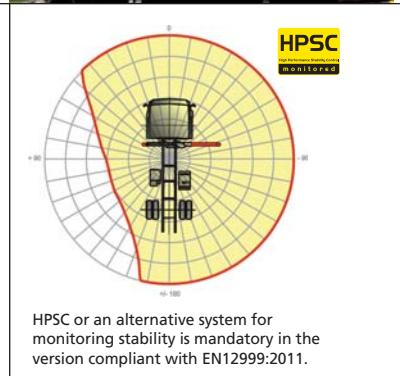


Package models (PK 15500T EH / PK 19500T EH)

- E-HPLS
- Paltronic 50
- Radio remote control with LED display
- Danfoss control valve or PVG2000
- 140 l oil tank

HPSC*

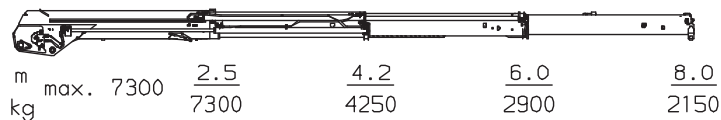
The High Performance Stability Control (HPSC) is a fully proportional system that monitors the stability of the crane vehicle. Sensors for proportional length measurement located in the stabilizers make their positioning fully variable. As a result, it is possible to calculate the permissible working range for any for any stabilizer situation.



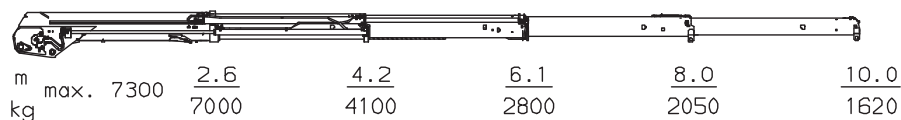
PK 19500T EH

High Performance

B



C



Technical Specifications (EN 12999 HC1 HD4/B3)

Max. lifting moment	18.5 mt/181.6 kNm	133930 ft.lbs
Max. lifting capacity	7300 kg/71.6 kN	16100 lbs
Max. hydraulic outreach	10.0 m	32' 10"
Slewing angle	420 °	
Slewing torque	2.5 mt/24.4 kNm	17960 ft.lbs

Stabilizer spread	std. 5.0 m/16' 5"	max. 6.6 m/21' 8"
Fitting space required (std.)	0.77 m	2' 6"
Width folded	2.53 m	8' 4"
Max. operating pressure	350 bar	5075 psi
Recommended pump capacity	from 50 l/min to 70 l/min	13.2 US gal./min 18.5 US gal./min
Dead weight (std.)	1580 kg	3480 lbs

